

BOARD OF HEALTH Meeting
Agenda for February 24, 2022 at 9:00 AM

1. Call to Order
 - a. Opening ceremonies – Pledge Allegiance to the Flag of the United States of America
 - b. Roll Call
 - c. Approval of the Agenda*
 - d. Approval of the Minutes from 1/27/2022*
2. Public Comment
3. Health Officer’s Report
4. Medical Director’s Report
5. Committee Reports
 - a. Finance Committee – Minutes from the February 14, 2022 Meeting*
 - b. Program, Policies, and Appeals – Minutes from the February 14, 2022 Meeting*
6. Financial Reports
 - a. Approve Payments*
 - b. Review Financials
7. New Business
 - a. Employee Recognition
 - b. MCDC Painting*
8. Departmental Reports
 - a. Area Agency on Aging
 - b. Personal Health & Disease Prevention
 - c. Environmental Health
9. Public Comment
10. Adjournment - Next meeting: March 24, 2022

Educational Presentation from Health Education and Promotion

January 27, 2022 – Board of Health Meeting Minutes

The Branch-Hillsdale-St. Joseph Community Health Agency Board of Health meeting was called to order by Chair, Kathy Pangle at 9:01 a.m. with the Pledge of Allegiance to the Flag of the United States and roll call as follows: Kathy Pangle, Tom Matthew, Brent Leininger, Mark Wiley, and Jared Hoffmaster.

Also present from BHSJ: Rebecca Burns, Karen Luparello, Theresa Fisher, Laura Sutter, Kali Nichols, and Paul Andriacchi.

Mr. Leininger moved to approve the agenda, with support from Mr. Hoffmaster. The motion passed unopposed.

Mr. Hoffmaster moved to approve the minutes from the December 13, 2022, meeting with support from Mr. Wiley. The motion passed unopposed.

Mr. Leininger moved to elect Mr. Matthew as the Board Chair, with support from Mr. Hoffmaster. The motion passed unopposed.

Ms. Pangle moved to elect Mr. Wiley as the Board Vice-Chair, with support from Mr. Leininger. The motion passed unopposed.

Ms. Pangle moved to assign Mr. Hoffmaster, Mr. Leininger, and Mr. Houtz to the Finance Committee, with support from Mr. Hoffmaster. The motion passed unopposed.

Mr. Leininger moved to assign Mr. Wiley, Mr. Matthew, and Ms. Pangle to the Program, Policy, and Appeals Committee, with support from Mr. Wiley. The motion passed unopposed.

Public Comment: Public comment was given by Resident Mapes, Resident Lashaway, and Resident Adams.

Rebecca Burns, Health Officer, reviewed her monthly report. Items included: COVID Testing, COVID Vaccinations, COVID-19 Therapeutics, COVID Omicron Variant, COVID-19 Data Round-Up, School Communication, Workplace COVID Safety, Sturgis Office, Agency Audit, MCDC Hillsdale Location, Homeless Point in Time Count, Rural Opioid Implementation Grant, KN95 Masks, Monoclonal Antibody Treatment in Short Supply, and 7-Day Positivity Graphs.

Karen Luparello, reviewed the Medical Director's monthly report. This month's educational report was titled, "What is Radon Gas?".

Committee Reports:

- Finance Committee – Mr. Hoffmaster moved to approve the minutes from the January 10, 2022 Finance Committee Meeting with support from Mr. Leininger. The motion passed unopposed.
- Program, Policy, and Appeals Committee – Mr. Wiley moved to approve the minutes from the January 10, 2022 Program, Policy, & Appeals Committee meeting with support from Ms. Pangle. The motion passed unopposed.

Financial Reports/Expenditures

- Mr. Hoffmaster moved to approve the expenditures as reported with support from Mr. Leininger. The motion passed unopposed.

Unfinished Business

- None

New Business:

- Ms. Pangle moved to approve the Board of Health Meeting Schedule as amended to remove duplicate meeting dates/times, with support from Mr. Wiley. The motion passed unopposed.
- Mr. Wiley moved to approve the By-Laws, as presented, with support from Ms. Pangle.
 - Mr. Leininger moved to amend Mr. Wiley’s motion to strike section 4, from Article IV, with support from Mr. Hoffmaster. The motion to amend passed unopposed. The motion, as amended, passed unopposed.
- Ms. Pangle moved to approve the Health Officer Evaluation Policy, as presented, with support from Mr. Wiley.
 - Mr. Leininger moved to amend Ms. Pangle’s motion to include a fourth bullet which reads, “Board of Health Members will be presented a copy of the employee satisfaction survey prior to the evaluation taking place.” The motion received support from Mr. Wiley. The motion to amend passed unopposed. The motion, as amended, passed unopposed.
- Mr. Hoffmaster moved to approve the updated Personnel Policy, as presented, with support from Mr. Wiley. The motion passed unopposed.
- Mr. Leininger moved to approve FY21/22 Budget Amendment #1, with support from Mr. Hoffmaster. The motion passed unopposed.
- Mr. Wiley moved to approve the proposal to contribute \$50,000 toward an incentive package to assist MCDC in hiring a dentist for the Hillsdale MCDC clinic. The motion received support from Mr. Hoffmaster. The motion passed unopposed.
- An Information report was reviewed related to the Census Data used for county appropriations.

Departmental Reports:

- Personal Health & Disease Prevention
- Environmental Health
- Area Agency on Aging

Public Comment: Public comment was given by Resident Mapes, Resident Lashaway, and Resident Adams.

With no further business, Ms. Pangle moved to adjourn the meeting with support from Mr. Leininger. The motion passed and the meeting was adjourned at 11:25 AM.

Respectfully Submitted by:

Theresa Fisher,

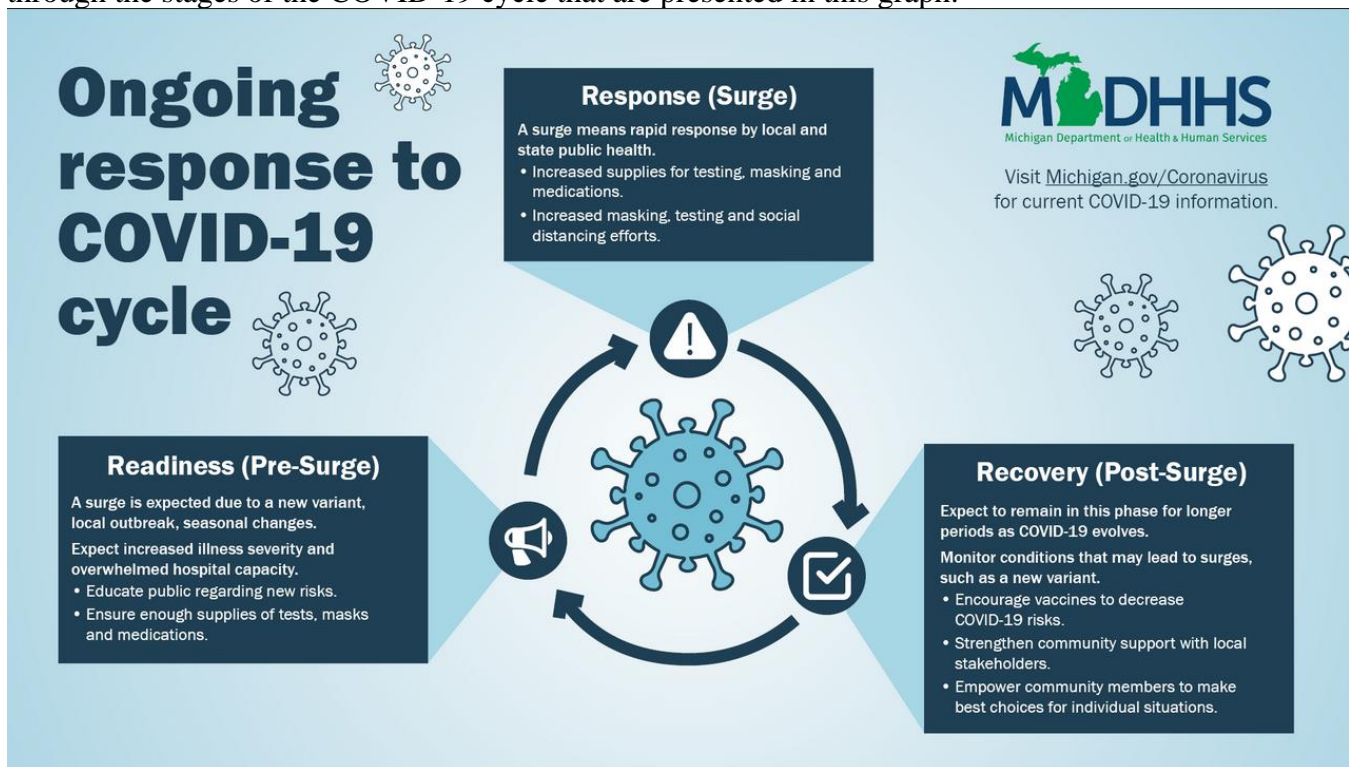


Health Officer’s Report (Initial) to the Board of Health for February 24, 2022
Prepared by: Rebecca A. Burns, M.P.H., R.S.

Agency Updates

COVID Recovery Phase: As case rates drop and we move out of the Omicron surge, as more therapeutics come available to treat COVID, and as our knowledge of the disease continues to increase; MDHHS has made changes and updated the guidance for mask use. The Public Health Advisory on Masking in Indoor Public Settings has been withdrawn, including school settings.

As we move from a pandemic state to an endemic state with COVID, it is expected that we will move through the stages of the COVID-19 cycle that are presented in this graph:



Currently, Michigan is moving into the Recovery phase. The Recovery phase is characterized by a decrease in cases with no immediate resurgence of the virus predicted. It is a time of relaxing mitigation strategies when situations make it safe to do so. For example, now is a good time to have a birthday party bringing people together, but when we visit a loved one who lives in congregate care we wear a mask to protect them. In this phase public health will monitor conditions watching for conditions which could lead to a future surge.

BHSJCHA messaging on the Recovery phase includes the following key points:

- Get vaccinated if you are not or ensure that you are up-to-date on all recommended doses.

- While supplies are free and available, take advantage of the opportunity to obtain free over-the-counter test kits to keep at home.
- Free KN95 and N95 masks are currently available at no cost in Michigan, get some for your family while they are available.
- When you are sick with COVID symptoms, stay home. Get tested.
- When visiting individuals that are immune compromised or at high risk for severe COVID disease, continue to use mitigation strategies including wearing a mask.

COVID Vaccinations: It is during Recovery that we continue vaccinating to provide protection against severe disease and death. Although the vaccines are not preventing every infection in vaccinated individuals it is providing protection against severe disease and death. Tri-county residents can schedule a vaccine appointment at www.bhsj.org/scheduling. Also on this page are opportunities for walk-in vaccination. The Agency advertises pop-up walk-in vaccine clinics in addition to those that require an appointment on our website.

COVID Testing: As the tri-county area has generally lower vaccination rates and even though we are moving into a Recovery phase, it is necessary for us to continue to offer testing opportunities for residents. Testing in Hillsdale County out of the MCDC lobby on Tuesday, Friday, and Saturday, in Branch County on Thursday at the Agency office and at the Welcome Center 7 days a week, and in St. Joseph County on Friday at the Agency office and on Tuesdays at Glen Oaks Community College.

The Agency continues to support schools in obtaining free testing supplies from MDHHS.

COVID Therapeutics: There is an informative Webinar for Providers on the therapeutics available and information on prescribing these therapies on the MDHHS COVID Health Care Provider page: https://www.michigan.gov/coronavirus/0,9753,7-406-98178_106077_106091---,00.html The Agency has recently shared that with our hospital partners so they can share it with their Providers. It is because of these new therapies and the availability of them that we can relax some mitigation measures during the Recovery phase.

COVID Omicron Variant: The Omicron variant was finally identified in an individual from Hillsdale since the January BOH meeting. This was expected and as such is now confirmed. The CDC model, Nowcast, estimates that the proportion of variants in Region 5 which includes; Illinois, Indiana, Michigan, Minnesota, Ohio, and Wisconsin at 100% Omicron as of February 12th.

COVID-19 Data Round-Up: All three counties remain at risk factor High due to the weekly positivity rate being above 10 and the weekly rate per 100,000 being above 100K. Positivity rate is considered underreported due to individuals choosing not to test or administering home tests and not reporting results. I'm also including the number of deaths attributed to COVID infection for the month of January. The data is available on the mistartmap.info site as of 2/26/22:

County	7-Day Positivity Rate	Weekly Cases per 100,000	# Deaths in January '22
Branch	14.8%	176.9	11 + 2 probable
Hillsdale	27.9%	298.2	8 + 2 probable
St. Joseph	15%	141.1	14 + 1 probable

School Communication: Local Superintendents are reporting a large number of staff and students positive for COVID during the weekly meeting I host for school Superintendents. Some schools have adopted the updated K-12 guidance which allows for a student of staff member to leave isolation after 5 days followed by 5 days of wearing a well-fitting mask when symptoms have improved and fever free, while others are choosing to stay with the 10-day isolation. Usually when a school determines it best to stay with the 10-day isolation it is due to concerns about the 5-day mask requirement and the mask being

worn properly. The local health department supports a school's decision to be more restrictive than the minimum. MDHHS minimum school quarantine requirements are outlined in this graphic:

WIC Formula Recall: On February 18th we learned of a national recall of infant powdered formula manufactured by Abbott Nutrition under the brand name Similac due to Cronobacter sakazakii contamination. This is the formula used by WIC. Our WIC team moved to action to notify Providers, WIC clients and local stores that participate in the WIC program.

Sturgis Office: I am meeting with the landlord in Sturgis to review the discussed layout which has been taped off and is ready for us to discuss further.

MCDC Hillsdale Location: The agenda today contains an action item for painting the MCDC space. Three bids were obtained with two of the contractors from the local area. As MCDC moves forward with bringing on a new dental professional, now is the time to update that space and repair damage to walls and apply a fresh coat of paint.

KN95 Masks: BHSJCHA still has supplies of KN95 masks available for free to the public. We are in process of ordering child sized KN95 masks to have available for tri-county residents as well.

Health Promotion & Ed. Team Activities: The month of January was eventful for the Health Promotion & Education staff as we were able to welcome a new staff member to our team. Joshua Englehart, who previously worked for the Branch-St. Joseph Area Agency on Aging (IIIC) as a Victims Outreach Specialist, has joined the Health Promotion and Education team as our newest Health Educator. Josh began working with us on January 18th, and we are very excited to have him on board! We continue to work alongside our clinical staff to help support, and promote, the Covid-19 vaccination, community testing sites and subsequent booster shots. The H.P. & Ed. Team, in partnership with MDHHS, secured a large amount of State-provided KN-95 masks on January 19th; these masks have been distributed to our clinics within the agency, along with a wide array of community partners and organizations that serve the individuals of our three counties. We are proud to have been able to provide these masks and appreciate the ability of the State to supply us with the masks that made this possible.

Grant Updates: The H.P. & Ed. team is also involved in several ongoing grant projects and campaigns:

HRSA - The Rural Community Opioid Response Planning Grant: This grant was awarded to BHSJCHA in Sept. of 2020 and has completed all deliverables, including: the community needs assessment and gap analysis; the project action plan and strategic plan; the Memorandum of Understanding, and most recently, submitted the required PIMS (Performance Improvement Measurement System) report. As the performance period for this grant approaches its end (2/22/2022), we are preparing a presentation for the final Learning Collaborative meeting in February and are excited to display to the other grantees the accomplishments of our Consortium.

HRSA - The Rural Community Opioid Response Implementation Grant (Application): The H.P. & Ed. Team has applied for the next step in the HRSA grant series, Implementation, which we were unsuccessful in securing for the current grant cycle. The new application focused on creating more clear and concise timeframes for project goals and objectives, which was the biggest weakness with the previous application. We are hopeful that this new submittal

will meet the requirements necessary to be awarded funding when the next performance period begins in September of this year.

MPHI – “Creating an Age-Friendly Public Health System in Michigan” Update: BHSJCHA, in partnership with the Area Agency on Aging (AAA 3C) & Region 2 Area Agency on Aging (R2AAA) were awarded this grant in May of 2021. The goal of this project was to utilize these funds to review and revise our current practices and policies as they relate to the aging population in hopes of creating a more age-friendly public health system. In pursuit of this, we have worked through, and completed, the majority of the deliverables and goals that were laid out in the project’s action plan. As we approach the end of this grant period at the end of February, we will be closing out the project by creating a “final report” and presenting the contents of this report to various stakeholders over the next couple of months.

LARA – 2022 Medical Marijuana Operation and Oversight Grant: The BHSJCHA has once again applied for the above grant that is offered through the Department of Licensing and Regulatory Affairs (LARA) Marijuana Regulatory Agency (MRA). The H.P. & Ed. team was able to submit successful applications, and fully expects to be awarded the funds once the review process is completed, for all three of our counties. Once awarded, the focus will shift to creating an action plan for the activities that will take place during the grant period. The 2022 cycle will look to partner with the quickly-expanding number of marijuana dispensaries within our 3 counties to spread the “Lock it Up” message. Our hope is to form a relationship with these businesses and help them to spread the message of safe marijuana use, and storage, to their clients.

Community Events: We have participated, or will be participating in the following events:

Date	Event
1/1	Medical Marijuana Grant Submitted
1/13	The Rural Community Opioid Response <i>Implementation</i> Grant Submitted
1/20	County-Level Health Needs Assessment Question Selection

MEDICAL DIRECTOR REPORT

JANUARY 2022

During the month of January 2022 activities continued to be directed toward COVID, vaccinations, third doses and boosters.

1. Morning checks CDC website and Johns Hopkins website to follow COVID numbers and trends.
2. 8AM morning telephone calls with Health Department group to continue with awareness of activities throughout the departments.
3. 10AM Wednesday school Superintendent calls. Private calls and conversations with individual schools prior to board meetings.
4. Meetings via zoom and teleconference with MDHHS.
5. Updated our status for MICR and vaccines online.
6. Standing orders were reviewed with regard to new recommendations.
7. Work continues for my epidemiology class and my health behavior class.

FEBRUARY

AMERICAN HEART MONTH

It's a great time to focus on your cardiovascular health.

About half of all Americans (47%) have at least one of the three key risk factors for heart disease. Some risk factors cannot be controlled, such as age and family history.

Key risk factors for heart disease

1. **Hypertension** – high blood pressure is a major risk for heart disease. The pressure in your arteries and blood vessels is too high. If not controlled high blood pressure affects your heart and major organs. High blood pressure is often called “the silent killer” because there are usually no symptoms.
2. **Hypercholesterolemia** – high cholesterol leads to a build up of cholesterol in the walls of the arteries. Arteries become narrow and blood flow to the heart, brain and kidneys cause organ disease.

Our liver makes enough cholesterol for our body to use. Unfortunately, we often get too much cholesterol from the food we eat. LDL (low-density lipoprotein) cholesterol is considered to be “bad” cholesterol and can cause plaque buildup. HDL (high-density lipoprotein) cholesterol, which is considered to be “good” cholesterol can protect against heart disease.

High cholesterol typically has no signs or symptoms. You can check your levels with simple blood tests.

3. **Diabetes mellitus** – can cause sugar to build up in the blood. The risk of death from heart disease is higher in adults with diabetes. High glucose levels damages blood vessels and causes issues with many organs, including the heart.
4. **Obesity** – excess body fat is linked to higher “bad” cholesterol and triglyceride levels. Obesity can also lead to hypertension and diabetes.

Behaviors that can increase your risk of heart disease--

Your lifestyle can increase your risk for heart disease.

- **Eating a diet high in saturated fats, trans fat, and cholesterol** has been linked to heart disease and related conditions, such as atherosclerosis. Also, too much [salt](#) (sodium) in the diet can raise blood pressure.
- **Not getting enough [physical activity](#)** can lead to heart disease. It can also increase the chances of having other medical conditions that are risk factors, including obesity, high blood pressure, high cholesterol, and diabetes. Regular physical activity can lower your risk for heart disease.
- Drinking too much [alcohol](#) can raise blood pressure levels and the risk for heart disease. It also increases levels of triglycerides, a fatty substance in the blood which can increase the risk for heart disease.
- **[Tobacco use](#)** increases the risk for heart disease and heart attack:
 - Cigarette smoking can damage the heart and blood vessels, which increases your risk for heart conditions such as atherosclerosis and heart attack.
 - Nicotine raises blood pressure.
 - Carbon monoxide from cigarette smoke reduces the amount of oxygen that your blood can carry.
 - Exposure to secondhand smoke can also increase the risk for heart disease, even for nonsmokers.

How do genetics and family history impact your risk of heart disease?

Genetic factors likely play some role in high blood pressure, heart disease, and other related conditions. However, it is also likely that people with a family history of heart disease share common environments and other factors that may increase their risk.

The risk for heart disease can increase even more when heredity combines with unhealthy lifestyle choices, such as smoking cigarettes and eating an unhealthy diet.

Do age and sex affect the risk of heart disease?

Heart disease is the number one killer of both men and women. Heart disease can happen at any age, but the risk goes up as you age.

Do race and ethnicity affect your risk of heart disease?

Heart disease and stroke can affect anyone, but some groups are more likely to have conditions that increase their risk for cardiovascular disease.

Heart disease is the **leading cause of death** for people of most racial and ethnic groups in the United States, including African Americans, American Indians and Alaska Natives, and white people. For Asian Americans and Pacific Islanders and Hispanics, heart disease is second only to cancer.

February 14, 2022 – Board of Health, Finance Committee Meeting Minutes

The meeting was called to order at 11:17 p.m. by Jared Hoffmaster, with roll call as follows: Jared Hoffmaster, and Brent Leininger.

Also present from BHSJ: Rebecca Burns, Laura Sutter, and Bonnie Saddler.

Public comment:

- None

New Business:

- Mr. Hoffmaster moved to recommend that the full Board approve to accept the bid from Atkinson Paint for painting services in the Hillsdale Dental Clinic.
- Rebecca Burns presented information concerning the MCDC Dentist Incentive. The Finance Committee will review when the contracts are completed and will be presented to the full BOH.
- Laura Sutter presented information on American Rescue Plan Funds AAA. Additional information will come after provider input, which will be on the agenda for March Finance Committee.
- There was a discussion concerning the pending the continuation of our current law firm. Rebecca will be investigating retainer vs. hourly rate, considering the number of hours used over the last few years. More information to be presented next month.

Public comment:

- None

With no further business the meeting was adjourned at 12:01 PM.

Respectfully Submitted by:
Bonnie Saddler

February 14, 2022 – Board of Health, Program, Policy, & Appeals Committee Meeting Minutes

The meeting was called to order at 1:02 p.m. by Tom Matthew, with roll call as follows: Mark Wiley, and Tom Matthew.

Also present from BHSJ: Rebecca Burns and Bonnie Saddler.

Public comment:

- Public comment was made by Resident Wortz.

New Business:

- Mr. Wiley recommended that Rebecca Burns present additional information to the Program, Policy, & Appeals committee next month before making the motion to approve continuation with the same law firm, such as what would Federal Court hourly charge be if needed.
- Employee Recognition letters were signed by Mr. Wiley and Mr. Matthew. The list of employees will be up for full approval at the next BOH meeting.
- Mr. Wiley recommended a review of by-laws relating to the handling of disruptive public comments. This topic will be on the agenda for March Program, Policy, & Appeals Committee Meeting.

Public comment:

- Public comment was made by Resident Adams, Resident Mapes, and Resident Wortz.

With no further business the meeting was adjourned at 1:35 PM.

Respectfully Submitted by:
Bonnie Saddler

Branch-Hillsdale-St Joseph Community Health Agency

Check/Voucher Register - Check Register for BOH

00103 - Cash - Accounts Payable

From 1/1/2022 Through 1/31/2022

<u>Payee</u>	<u>Check Amount</u>	<u>Check Number</u>	<u>Effective Date</u>
2nd Story Marketing LLC	350.00	53519	1/14/2022
A+ Nursing	282.24	22-01-14 A.01	1/14/2022
ACD.NET	2,471.12	53520	1/14/2022
Action Quick Print Plus	64.00	22-01-28 A.01	1/28/2022
Aetistry Technologies, LLC	650.00	53526	1/28/2022
Aflac District Office	463.58	53517	1/7/2022
Aflac District Office	463.58	53524	1/21/2022
Alerus Financial	1,218.00	22-01-07 R.01	1/7/2022
Alerus Financial	1,238.00	22-01-21 R.01	1/21/2022
Amazon Capital Services, Inc	184.94	22-01-14 A.02	1/14/2022
Amazon Capital Services, Inc	84.00	22-01-28 A.02	1/28/2022
Area Agencies On Aging Mich.	500.00	22-01-14 A.03	1/14/2022
Armstrong Nutrition Management	2,928.00	22-01-14 A.04	1/14/2022
Blue Cross Blue Shield	51,774.60	22-01-14 P.01	1/14/2022
Branch Area Transit Authority	3,220.80	22-01-14 A.05	1/14/2022
Branch County Commission	18,348.57	22-01-14 A.06	1/14/2022
Branch County Complex	5,694.28	22-01-31 D.01	1/31/2022
CAA Of South Central Michigan	19,439.24	22-01-14 A.07	1/14/2022
Card Services Center	372.99	22-01-28 P.01	1/28/2022
Century Bank - Hillsdale Maintenance	2,000.00	22-01-31 D.02	1/31/2022
Century Bank - Three Rivers Maintenance	2,000.00	22-01-31 D.03	1/31/2022
Century Basic	816.53	22-01-07 R.02	1/7/2022
Century Basic	888.53	22-01-21 R.02	1/21/2022
Century EFPTS	1,273.38	22-01-07 C.01	1/7/2022
Century EFPTS	61.20	22-01-07 DI.01	1/7/2022
Century EFPTS	24,180.94	22-01-07 R.03	1/7/2022
Century EFPTS	56.83	22-01-21 DI.01	1/21/2022
Century EFPTS	45.90	22-01-21 L.01	1/21/2022
Century EFPTS	23,345.86	22-01-21 R.03	1/21/2022
Century Mastercard	1,633.08	22-01-14 P.03	1/14/2022
Century MERS	38,167.67	22-01-14 A.08	1/14/2022
Century State	277.17	22-01-07 C.02	1/7/2022
Century State	4,075.40	22-01-07 R.04	1/7/2022
Century State	4,032.66	22-01-21 R.04	1/21/2022
Charter Communications	137.97	22-01-14 P.04	1/14/2022
Cintas Corporation Loc 351	145.56	22-01-14 P.05	1/14/2022
Cintas Corporation Loc 351	0.02	22-01-28 P.02	1/28/2022
City Of Three Rivers	140.03	22-01-14 A.09	1/14/2022
City Of Three Rivers	40.00	22-01-28 A.03	1/28/2022
ConnectAmerica	38.00	22-01-14 A.10	1/14/2022
Crossroads Home Care Inc.	802.24	22-01-14 A.11	1/14/2022
Current Office Solutions	526.46	22-01-14 A.12	1/14/2022
Current Office Solutions	24.90	22-01-28 A.04	1/28/2022
Frontier	301.91	22-01-28 P.03	1/28/2022
GDI Services Inc.	4,398.00	22-01-31 D.04	1/31/2022
GRAPHICS 3 INC	145.00	22-01-28 A.05	1/28/2022
GT INDEPENDENCE	1,411.39	22-01-14 A.13	1/14/2022
Hillsdale Board Of Public Utilities	1,783.98	22-01-28 P.04	1/28/2022
Hillsdale County Treasurer	923.56	22-01-14 A.14	1/14/2022
HomeJoy of Kalamzoo	5,579.39	22-01-14 A.15	1/14/2022
Hospital Network Healthcare Services	495.00	22-01-14 A.16	1/14/2022
Indiana MI Power Company	1,129.87	22-01-14 P.06	1/14/2022

Branch-Hillsdale-St Joseph Community Health Agency

Check/Voucher Register - Check Register for BOH

00103 - Cash - Accounts Payable

From 1/1/2022 Through 1/31/2022

<u>Payee</u>	<u>Check Amount</u>	<u>Check Number</u>	<u>Effective Date</u>
KALAMAZOO CHD	500.00	22-01-28 A.06	1/28/2022
Legal Services Of S.Central MI	1,120.00	22-01-14 A.17	1/14/2022
MALEHA	(225.00)	53348	1/13/2022
MALPH	4,737.00	53521	1/14/2022
Maplecrest, LLC	620.00	22-01-31 D.05	1/31/2022
Marana Group	1.03	22-01-28 A.07	1/28/2022
Marana Group	142.00	22-01-28 A.08	1/28/2022
Maxim Healthcare Staffing Services Inc.	3,253.22	22-01-14 A.18	1/14/2022
Maxim Healthcare Staffing Services Inc.	3,364.00	22-01-28 A.09	1/28/2022
McKesson Medical-Surgical Gov. Solutions LLC	461.14	22-01-14 P.07	1/14/2022
Medical Care Alert	229.55	22-01-14 A.19	1/14/2022
MERS 5% EMPLOYEES	8,127.36	22-01-14 A.20	1/14/2022
Michigan Public Health Institute	1,972.82	22-01-14 A.21	1/14/2022
Michigan State Disbursement Unit	190.11	53518	1/7/2022
Michigan State Disbursement Unit	190.11	53525	1/21/2022
Nationwide	1,040.00	22-01-07 R.05	1/7/2022
Nationwide	1,040.00	22-01-21 R.05	1/21/2022
OfficeTeam	3,344.76	22-01-14 P.08	1/14/2022
Pitney Bowes Inc.	645.54	22-01-14 P.09	1/14/2022
Pitney Bowes Inc.	161.10	22-01-28 P.05	1/28/2022
Prompt Care Express PC	207.00	53527	1/28/2022
REBECCA BURNS	8.75	22-01-28 A.10	1/28/2022
Reserve Account	3,000.00	22-01-14 A.22	1/14/2022
Richard Clark	2,225.00	22-01-31 D.06	1/31/2022
Riley Pumpkin Farm	1,450.00	22-01-31 D.07	1/31/2022
Rosati Schultz Joppich Amtsbueshler	1,395.00	22-01-28 A.11	1/28/2022
Ruth E. Brown	1,680.00	22-01-14 A.23	1/14/2022
Ruth E. Brown	2,100.00	22-01-28 A.12	1/28/2022
Shaffmasters U-Stor-n-Lock	150.00	22-01-14 A.24	1/14/2022
Shred It	90.00	22-01-28 A.13	1/28/2022
St Joseph County COA	37,612.11	22-01-14 A.25	1/14/2022
St Joseph County Transit Authority	2,132.92	22-01-14 A.26	1/14/2022
Staples	1,699.57	22-01-14 P.10	1/14/2022
Staples	14.86	22-01-28 P.06	1/28/2022
State of Michigan	125.00	53528	1/28/2022
State Of Michigan	110.00	53529	1/28/2022
State of Michigan-Dept	706,759.00	53530	1/28/2022
Stratus Video, LLC	1,088.25	53531	1/28/2022
Swick Broadcasting Company	696.60	53522	1/14/2022
Three Rivers Health	2,775.00	22-01-31 D.08	1/31/2022
Thurston Woods Village	4,397.09	53523	1/14/2022
TINA SCHNEIDMILLER	98.51	22-01-28 A.14	1/28/2022
Unemployment Insurance	4,921.84	22-01-28 P.07	1/28/2022
Verizon	1,013.42	22-01-14 P.11	1/14/2022
VRI INC.	476.00	22-01-14 A.27	1/14/2022
Wal-Mart Community	133.69	22-01-14 P.12	1/14/2022
Xmission	265.50	53532	1/28/2022
Report Total	1,038,166.22		

Branch-Hillsdale-St Joseph Community Health Agency

Balance Sheet
As of 1/31/2022

Assets

Cash on Hand	4,637.69
Cash with County Treasurer	3,477,631.45
Community Foundation Grant	309,955.94
Cash HD Building Maintenance	32,000.00
Cash TR Building Maintenance	32,000.00
Accounts Receivable	87,965.02
Due from Dental DAPP	2,877.14
Due from State	(107,710.03)
Due from Other Funding Sources	164,411.75
Prepaid Expenses	147,518.79
Biologic Inventory	<u>72,831.26</u>
Total Assets	<u>4,224,119.01</u>

Liabilities

Accounts Payable	178,237.83
Payroll Liabilites	151,333.95
Capital Improvements	89,000.00
Deferred Revenue	619,276.23
Deferred Revenue BR	35,206.00
Deferred Revenue HD	39,062.00
Deferred Revenue SJ	51,283.00
Unavailable Revenue	(13,476.23)
Biologics	<u>72,831.26</u>
Total Liabilities	<u>1,222,754.04</u>

Net Assets

Operation Fund Balance	221,858.89
Restricted Fund Balance	401,515.28
Designated Fund Balance	<u>2,377,990.80</u>
Total Net Assets	<u>3,001,364.97</u>

Total Liabilities and Net Assets 4,224,119.01

Prior Year Fund Balance Comparison at 1/31/2021:

Operation Fund Balance	546,779.62
Restricted Fund Balance	439,252.24
Designated Fund Balance	<u>1,984,396.04</u>
Total Fund Balance \$	<u>2,970,427.90</u>

BRANCH HILLSDALE ST JOSEPH COMMUNITY HEALTH AGENCY

Expense by Program - 1/31/2022

Program	Program Title	Month	Year to Date	Original	Expended	
*	405	Grant Writing	1,635.81	4,690.93	3,005.00	156.10%
*	010	Agency Support	514.61	16,049.36	25,749.00	62.33%
*	008	Salary & Fringe Payoff	1,076.71	47,557.99	80,000.00	59.44%
*	325	CSHCS	21,181.98	82,143.69	182,729.00	44.95%
**	032	Emergency Preparedness	11,263.64	47,186.07	122,421.00	38.54%
*	012	Area Agency on Aging	118,706.74	479,445.21	1,352,727.00	35.44%
*	341	Infectious Disease	19,787.10	96,434.93	287,139.00	33.58%
	021	Dental Clinic - Three Rivers	2,775.00	11,100.00	33,300.00	33.33%
	326	Vision (ELPHS)	8,961.54	32,373.81	99,069.00	32.67%
	331	STD	11,896.56	46,068.40	144,713.00	31.83%
	327	Hearing (ELPHS)	8,791.80	31,029.39	98,844.00	31.39%
	605	General EH Services	2,851.42	11,886.77	38,102.00	31.19%
	714	Onsite Sewage Disposal	27,088.49	112,924.40	361,963.00	31.19%
	721	Drinking Water Supply	27,088.49	112,924.40	361,963.00	31.19%
	352	ELCCT Contact Tracing, testing coord,	41,635.42	207,326.71	667,609.00	31.05%
	745	Type II Water	7,218.72	29,715.63	99,019.00	30.01%
	338	Immunization Vaccine Handling	22,050.88	89,221.12	299,428.00	29.79%
	704	Food Service	34,930.94	144,672.96	485,712.00	29.78%
	329	MCH Enabling Children	3,849.65	11,366.63	39,540.00	28.74%
	351	CELC Infection Prevention	4,984.80	23,968.94	90,728.00	26.41%
	115	MCH Enabling Women	1,394.64	14,662.56	55,907.00	26.22%
	109	WIC	63,359.81	253,178.46	967,765.00	26.16%
	029	Dental Clinic - Hillsdale	653.60	2,923.53	12,000.00	24.36%
	201	CSF Carseats	1,602.65	6,156.93	25,889.00	23.78%
	014	VOCA	9,183.43	45,646.65	205,743.00	22.18%
	321	CHC Tele-A-Health	2,564.11	8,214.08	40,985.00	20.04%
	363	CVDIMS Covid Immz Supplemental	40,857.44	150,467.52	788,258.00	19.08%
	332	HIV Prevention	1,717.26	7,225.41	38,115.00	18.95%
	138	Immunization IAP	27,261.27	146,323.92	838,324.00	17.45%
	345	Lead Testing	1,195.59	4,020.47	25,611.00	15.69%
	108	WIC Breastfeeding	4,664.98	17,107.17	116,877.00	14.63%
	200	ELPHS Marketing	2,427.28	8,980.15	84,883.00	11.40%
	107	Medicaid Outreach	547.63	1,896.62	18,626.00	10.18%
	101	Workforce Development	289.40	4,836.34	49,230.00	9.82%
	400	HRSA 20RCORP	2,069.58	6,328.43	85,996.00	7.35%

374	EOACV Expanding Older Adult Access to COVID Vaccine	15.83	531.04	17,163.00	3.09%
371	CSHCS Vaccine Initiative	13.80	403.80	14,150.00	2.85%
024	MERS Pension Underfunded Liability	0.00	299.38	44,590.00	0.67%
023	Capital Expenditures	0.00	0.00	138,000.00	0.00%
035	Vector Borne Disease Surveillance	0.00	0.00	32,414.00	0.00%
112	CSHCS Medicaid Outreach	0.00	0.00	72,853.00	0.00%
185	Dental Outreach	0.00	0.00	65,071.00	0.00%
212	Medical Marijuana BR	0.00	0.00	22,378.00	0.00%
230	Medical Marijuana HD	0.00	0.00	13,159.00	0.00%
275	Medical Marijuana SJ	<u>0.00</u>	<u>0.00</u>	<u>7,863.00</u>	0.00%
Total Total Expense		<u>538,108.60</u>	<u>2,317,289.80</u>	<u>8,655,610.00</u>	<u>26.77%</u>

The Agency is currently 6.56% under budget.

*4/12 Months = 33.33%

**4/9 Months = 44.44%

Programs Over Budget as of 1/31/2022

RU 405: 156.10%	New Grant Writing program used to evaluate how much is spent on grant writing activities. We will monitor and amend in the final amendment.
RU 010: 62.33%	Program shows over budget because we have already received 62% of the revenue budgeted, in a one-time payment from MMRMA. This causes the indirect expenses not to be distributed to the programs as expected. Legal fees are also running higher than expected. We will continue to monitor and will amend in the final amendment.
RU 008: 59.44%	Over budget due to end of year sick time payout and vacation time payout when a long-term employee retired. This should fall back in line with budget as year progresses, but we will continue to monitor and may need to adjust in an upcoming amendment.
RU 325: 44.95%	Budget for RU 325 must be fully expended before expenses can be charged to RU 112. When looking at these two budgets together as one the program is within budget at 32.14%
RU 032: 38.54%	9-Month Program - within budget 44.44%
RU 012: 35.44%	Over budget due to annual membership and consulting expenses fully expended in October -this program will fall back in line with budget as year progresses.
RU 341: 33.58%	Slightly over budget due to large annual flu vaccine purchase expended in October - this program will fall back in line with budget as year progresses.



2022 CERTIFICATE OF RECOGNITION FOR YEARS OF DEDICATED SERVICE

5 Years

Terri Penney

10 Years

Jolene Hurst

15 Years

Stephanie Hough

Dale Cross

Carrie Southern

Carol Anderson

David Wagoner

CB Paint, LLC.

1463 Pifer Drive, Hillsdale, MI 49242

Phone: (517) 320-0718

Quote

Date: 3-Feb-22

Invoice Number: 47081

Invoice To: MCDC ATTN: Rebecca Burns
 Address: 20 Care Dr
 Hillsdale, MI 49242
 Phone: (269) 501-2503
 Email: burnsr@bhsj.org

Invoice From: CB Paint, LLC.
 Address: 1463 Pifer Drive
 Hillsdale, MI 49242
 Company Contact: Carter Ballinger
 Phone: (517) 320-0718
 Email: cbpaint@yahoo.com

Item Number	Catalog Number	Item Description	Quantity	Price Each	Sub Total
1	Paint	Paint two coats of Sherwin Williams SuperPaint on all walls and drywall ceilings in entryway, waiting room, bathrooms, office areas, hallways, side rooms, lounge, lab, and dentist area. Contractor to remove stickers from walls, patch any holes, and provide all materials required to finish job including paint, brushes, rollers, and ladders. Client to pick paint colors.	1	\$13,500.00	\$13,500.00
1	Install	Install corner shields in high traffic areas. Shields to be picked out by client. Price may vary depending on product cost and install time.	1	\$ 350.00	\$ 350.00
					\$ -
					\$ -
					\$ -
Total					\$13,850.00

Special Instructions
Quote good for 28 days.
Revision History

Premier Painting

Estimate

Premier Painting
2411 E Bear Lake rd
Hillsdale Mi 49242
US
5176104938

BILL TO
Mcdc

Estimate #
Date

estimate-78
Feb 3, 2022

Item	Quantity	Price	Amount
Interior office space painting All walls to have any holes filld. All items removed from walls to be stored in a safe location per customer request. All walls and painted ceilings to be prepped and painted with 2coats. This includes all offices, patient rooms,, closets, open spaces, waiting area and nursing Station. All walls one color. One accent wall in lobby area. All labor and materials included.	1	\$9,875.00	\$9,875.00

Subtotal \$9,875.00

Grand Total **\$9,875.00**

ATKINSON PAINTING CO.



Commercial and Residential
Interior and Exterior
Paint • Stain • Wall Covering • Power Washing

(517) 974-7282 Doug
(517) 974-7283 Bill
(517) 668-1183 Fax

6804 Shiloh Way
Lansing, MI 48917

**MCDC (My Community Dental Center)
Hillsdale, MI**

Bid Interior Paint January 31, 2022

Paint (Ceilings) Apply (2 Coats) Ceiling White finish Paint to (All Boarded Ceilings) Part of Clinic is Acoustical with ceiling Grid. This area does not receive paint, Only areas with Drywall finished ceilings to be painted.

Labor \$ 1,000.00

Prep & Finish Paint (Walls) Repair all walls as needed to make good for Paint Applications. Apply (2 Coats) Sherwin Williams Duration Satin Finish in Customer Selected Color to the following area's.

All Corridors, Lobby/Patient Waiting Room, Front Office Area, 6 Patient Rooms, Sterilization Room, Panoramic Room, Lab Room, Dr Office, Break Room, Staff and Public Bathrooms.

Labor \$ 6,100.00

Total Cost Labor \$ 7,100.00

Materials Cost Estimate

I estimate the cost of the following materials. I set up a (Job Name) at Sherwin Williams under my contract account. Every purchase for (MCDC) will be presented upon completion of job. I get exceptional pricing that I pass on to my customers with no mark up. I only purchase what I will use on job, and leave all unused material with customer for future touch up.

**9 Gallons (Ceiling White) Paint
8-10 Gallons (Wall Paint) Sherwin Williams Duration Satin (Customer Selected Color).
Drywall Repair Material
3 Roller Covers
2 Tubes Caulk, Sanding Sponge Blocks, Paint Rags, Tape, Plastic.**

Estimated Cost Materials \$ 700.00

2612 E. Sherwood Rd.
Williamston, MI 48895
(517) 655-3123
Fax: (517) 655-2624
E-mail: rcw@rcwgci.com

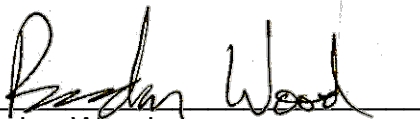
February 9, 2022

RE: Atkinson Painting

To Whom it May Concern,

Atkinson Painting has been the exclusive painting contractor for RCW General Contractors, Inc. for the past 16 years. During that time Atkinson Painting has completed 12-15 jobs per year. All projects have been completed on-time, with attention to detail and the commitment to do whatever it takes to get the job done. Doug and his staff have outstanding work ethic and drive. This is why there has not been a project in the past 16 years that Atkinson Painting has not been on. I consider Doug and his company to be a part of the RCW family and I don't see that ever changing.

Sincerely,



Brandon Wood
Vice President

02/09/2022
(Date)

New Homes • Additions



Remodeling • Decks

3093 Portland Road • Portland, MI 48875 • 517-647-7304 • 517-202-1911

February 9, 2022

To Whom It May Concern,

It is my pleasure to recommend, Atkinson Painting, Doug Atkinson is a skilled painter. He has work on over several new home projects for me and has worked for me for over ten years.

Doug has always performed in a timely fashion. He is courteous and professional with homeowners. His workmanship is high quality and talented. I would highly recommend him for any painting project.

If you have any questions or would like to talk with me, you can reach me at cksandborn@yahoo.com or (517)202-1911.

Sincerely,

A handwritten signature in black ink that reads 'Chris Sandborn'.

Chris Sandborn

Sandborn Builders LLC



Director's Report

Updates:

1. Services to Victims of Elder Abuse Program Updates

- We have received a good response to the Elder Abuse Victim Specialist vacancy announcement and are in-process interviewing candidates.
- The revised BHSJ Community Health Agency 2022 *Personnel Policies* were sent to the Division of Victim Services as another follow-through item with regard to the contract review that occurred last spring. They shared this response: *"Thank you for sharing the newly revised personnel policies. I appreciate your commitment to striving for excellence in both service delivery and the implementation of the Elder Abuse Project. DVS appreciates the work you and your team are doing every day in meeting the needs of victims."*

2. The American Rescue Plan (ARP) funding has been awarded to the Area Agencies on Aging in Michigan!

- In Region IIC, we received over \$450,000 for services across 5 funding categories: IIB Supportive Services, IIC1 Congregate Meals, IIC2 Home Delivered Meals, IID Preventive Health, and IIE Caregiver Services.
- The ACLS Bureau has not yet issued guidance on the funding, which is key in moving forward. ACLS has shared that there is flexibility to purchase equipment, match will be required (for service funds and administrative funds), special program reporting will be required, and the funds can be carried forward through Sept. 2024.
- As we discussed with the Finance Committee, gathering input from providers will be essential in planning for the use of these funds. Targeting individuals who are greatest in need, including those on waiting lists are always a top priority. We would like to address gaps in services and/or other creative ideas if at all possible. The ARP funds are an opportunity!
- We will move forward with setting a provider meeting once the Bureau guidance is issued.

In other funding news... The Bureau will be issuing additional nutrition program funding (Supplemental HDC5) very soon. The current federal budget remains under (another) continuing resolution through March 11th which always keeps things interesting. We will keep the Board updated moving forward.

3. Our team is busy distributing PPE to the public, community agencies and network partners. KN95 masks have been popular, as well as hand sanitizers! If you or an organization you are affiliated with is in need of PPE, please let me know!

Personal Health and Disease Prevention: February 24, 2022

Communicable Disease:

Several updates have been made recently to the Clinical Considerations for Use of the Covid-19 Vaccine in the United States. Most of the changes apply to those who are moderately or severely immunocompromised. Some of the changes made recently include the following:

- It is no longer necessary to delay vaccination following receipt of monoclonal antibodies or convalescent plasma.
- Those who are immunocompromised may receive a total of 4 doses (primary series (2 doses), 1 additional dose, and 1 booster dose).
- Those who are immunocompromised can now receive a booster dose at 3 months versus 5 months.
- Those who are immunocompromised and received the J&J vaccine are now recommended to receive an additional dose and a booster dose, for a total of 3 doses to be up to date on vaccination.

Primary series vaccination is still recommended for everyone 5 years and older in the United States. Currently, the 6 months to 4-year-old Pfizer vaccine has been delayed.

Our new CDCF Epidemiologist has on-boarded with us. We are working to get him up to speed and trained in the necessary programs for his position.

I've spoken with several community members in the last week or so who did not realize that we can provide mobile services to a certain extent with Covid and influenza vaccination, if necessary. We are able to visit the homes of those who are home-bound or who have difficulty reaching our locations to provide these types of services.

Immunizations/STD/HIV:

Vaccination coverage has declined since the onset of the Covid-19 pandemic. We continue to send recall letters out making families aware of those who are not up to date on routine immunizations. We do get responses from sending these letters out and our staff will make attempts to reach clients via phone as well.

Much of the guidance for vaccination on Covid-19 can get quite confusing so I have included two tables below from the CDC that I believe help to clearly depict eligibility.

Women, Infant, and Children (WIC):

Our Clinic Supervisor and WIC Coordinator position has now become available at our Hillsdale County location. We are seeking a full-time BSN candidate for this position.

Children's Special Health Care Services (CSHCS), Lead, and Hearing & Vision:

We have an opportunity to provide mandated reporting training to our clinic staff. This information came about through our CSHCS team and the CPS Supervisor for Hillsdale County. We would like to expand the opportunity and provide it to all of our staff here at the agency.

CSHCS has recently added sickle cell as a lifetime coverage instead of coverage ending at age 21.

Hearing & Vision Techs are starting to schedule Kindergarten round-ups for the spring season.

TABLE 2. COVID-19 vaccination schedule for the primary series in the general population*

TABLE 2: COVID-19 vaccination schedule for the primary series in the general population					
Primary series vaccine manufacturer	Age group	Number of doses in primary series	Number of booster doses	Interval between 1st and 2nd dose	Interval between primary series and booster dose
Pfizer-BioNTech	5–11 years	2	NA	3 weeks	NA
Pfizer-BioNTech	≥12 years	2	1	3 weeks	≥5 months
Moderna	≥18 years	2	1	4 weeks	≥5 months
Janssen	≥18 years	1	1	NA	≥2 months

Table 3: COVID-19 vaccination schedule for people with moderate or severe immunocompromise*

Table 3: COVID-19 vaccination schedule for people with moderate or severe immunocompromise						
Primary vaccination	Age group	Number of primary vaccine doses	Number of booster doses	Interval between 1st and 2nd dose	Interval between 2nd and 3rd dose	Interval between 3rd and 4th dose
Pfizer-BioNTech	5–11 years	3	NA	3 weeks	≥4 weeks	N/A
Pfizer-BioNTech	≥12 years	3	1	3 weeks	≥4 weeks	≥3 months
Moderna	≥18 years	3	1	4 weeks	≥4 weeks	≥3 months
Janssen	≥18 years	1 Janssen, followed by 1 mRNA	1	4 weeks	≥2 months	N/A

Kali Nichols MPH
Personal Health & Disease Prevention Director

**Branch - Hillsdale - St. Joseph Community Health Agency
Personal Health and Disease Prevention**

January-22	2021-2022				FYTD 2021-2022				2020-2021 FYTD			
	BR	HD	SJ	Total	BR	HD	SJ	Total	BR	HD	SJ	Total
Animal Bite/Rabies potential exposure	1	3	-	4	5	23	-	28	13	17	-	30
Brucellosis	-	-	-	-	-	-	-	-	-	-	1	1
Campylobacter	-	-	-	-	3	3	3	9	-	1	3	4
Chicken Pox	-	-	-	-	-	-	-	-	-	-	-	-
Chlamydia	5	10	13	28	37	34	64	135	37	37	48	122
Coccidioidomycosis	-	-	-	-	-	-	1	1	-	-	-	-
CRE Carbapenem Resistant Enterobac.	-	-	-	-	1	-	-	1	-	-	-	-
Cryptosporidiosis	-	-	-	-	-	-	1	1	-	-	1	1
Encephalitis - Primary	-	-	-	-	-	-	-	-	-	-	-	-
Giardiasis	-	-	1	1	-	1	3	4	-	-	-	-
Gonorrhea	-	1	2	3	10	16	42	68	19	30	24	73
H. Influenzae Disease - Inv.	-	-	-	-	-	-	-	-	-	1	-	1
Hepatitis B - Acute	-	-	-	-	-	-	-	-	-	-	-	-
Hepatitis B - Chronic	-	-	-	-	-	-	-	-	1	-	-	1
Hepatitis C - Acute	1	-	-	1	2	-	-	2	-	-	1	1
Hepatitis C - Chronic	1	-	-	1	8	-	2	10	6	4	4	14
Hepatitis C Unknown	-	-	-	-	-	-	-	-	-	-	-	-
Histoplasmosis	-	-	-	-	1	-	1	2	-	-	-	-
HIV/AIDS	-	-	1	1	1	-	2	3	-	-	-	-
Influenza	28	36	9	73	63	106	17	186	-	-	-	-
Kawasaki	-	-	-	-	-	-	-	-	-	-	-	-
Legionellosis	-	-	-	-	-	1	-	1	-	-	-	-
Lyme Disease	-	-	-	-	-	1	1	2	-	-	-	-
Measles	-	-	-	-	-	1	-	1	-	-	-	-
Menengitis - Aseptic	-	-	-	-	-	-	-	-	-	-	-	-
Menengitis - Bacterial	-	-	-	-	-	-	-	-	-	-	-	-
Meningococcal Disease	-	-	-	-	-	-	-	-	-	-	-	-
Mumps	-	-	-	-	-	-	-	-	1	-	-	1
Mycobacterium - Other	-	2	1	3	2	3	2	7	-	-	-	-
Norovirus	-	-	-	-	-	-	-	-	-	-	-	-
Novel Coronavirus	2,160	1,537	2,142	5,839	4,752	4,279	5,508	14,539	3,001	2,778	3,611	9,390
Pertussis	-	1	-	1	-	3	-	3	-	-	-	-
Salmonellosis	-	-	1	1	1	1	1	3	3	-	-	3
Scabies	-	-	-	-	-	-	-	-	2	-	-	2
Shiga Toxin-prod. (STEC)	1	-	-	1	1	1	-	2	-	-	-	-
Staphylococcus Aureus Infect.	-	-	-	-	-	-	-	-	-	-	-	-
Strep Invasive Gp A	-	-	-	-	-	-	-	-	-	-	1	1
Strep Pneumonia Inv Ds.	1	2	-	3	1	3	-	4	1	1	1	3
Strep Pneumoniae, Drug Res.	-	-	-	-	-	-	-	-	-	-	-	-
Syphilis - Primary	-	-	-	-	-	-	-	-	-	-	-	-
Syphilis - Secondary	-	-	2	2	-	-	2	2	-	-	1	1
Syphilis To Be Determined	-	-	-	-	-	-	-	-	-	-	-	-
Trichinosis	-	-	-	-	-	-	-	-	-	-	-	-
Tuberculosis	-	-	-	-	-	-	-	-	-	-	-	-
Unusual Outbreak/Occurrence	-	-	-	-	1	2	-	3	-	-	-	-
VZ Infection, Unspecified	-	-	-	-	-	-	-	-	-	-	1	1
Yersinia Enteritis	-	-	-	-	-	-	-	-	-	-	-	-
School Only Reporting												
Colds W/O Fever	385	203	330	918	1,599	584	1,152	3,335	214	272	524	1,010
Flu Like Disease	430	107	403	940	1,154	430	1,161	2,745	391	90	197	678
GI Illness	367	292	248	907	1,696	852	1,184	3,732	462	337	399	1,198
Head Lice	17	23	37	77	80	71	164	315	44	30	98	172
Impetigo	1	1	1	3	9	1	1	11	4	-	1	5
Mononucleosis	0	1	2	3	4	3	4	11	2	2	-	4
Pink Eye	12	18	44	74	78	48	135	261	4	8	14	26
Strep Throat	52	23	87	162	279	75	208	562	50	49	76	175
	3462	2,260	3,324	9,046	9,788	6,542	9,659	25,989	4,255	3,657	5,006	####

**Branch - Hillsdale - St. Joseph Community Health Agency
Personal Health and Disease Prevention**

	Jan-21					YTD 2021-2022					YTD 2020-2021				
	BR	HD	ST	TR	Total	BR	HD	ST	TR	Total	BR	HD	ST	TR	Total
CHILD IMMUNIZATIONS															
# Vaccines Given CHA	191	160	-	120	471	699	721	-	619	2,039	362	582	87	401	1,432
All VFC Doses Given	755	365	-	627	1,747	3,029	1,674	-	3,041	7,744	3,475	2,414	-	4,310	10,199
Waivers	7	10	-	4	21	28	58	10	43	139	15	22	6	13	56
ADULT IMMUNIZATIONS															
# Vaccines Given	425	174	-	165	764	2,814	1,444	-	1,195	5,453	1,643	814	14	1,708	4,179
All AVP Doses Given	6	48	-	15	69	38	232	-	65	335	83	30	-	99	212
TRAVEL VACCINATIONS															
Branch Office	-				-	-	-	-	-	-	-	-	-	-	-
COMMUNICABLE DISEASE															
TB Tests Done	11	-	-	2	13	21	41	-	5	67	32	37	-	4	73
New LTBI on Rx	-	-	-	-	-	-	-	-	-	-	-	-	-	-	-
STD treatments	-	1	1	7	9	15	15	2	52	84	-	8	1	9	18
New STD Investigations	5	11	-	17	33	32	36	-	88	156	56	67	-	73	196
HIV Testing	-	-	1	4	5	-	-	2	10	12	-	1	2	-	3
ENROLLMENTS															
Medicaid & Michild	-	1	-	1	2	3	1	-	2	6	-	-	-	-	-
REFERRAL SERVICE															
MCDC Referrals	5	-	2	14	21	36	-	27	72	135	31	95	17	42	185
MIHP referrals	47	-	19	32	98	118	21	50	83	272	63	9	89	81	242
Hearing Screens															
Pre-school	-	10	-	6	16	54	174	64	32	324	-	177	-	280	457
School Age	149	142	-	416	707	450	426	489	924	2,289	416	629	-	938	1,983
Vision Screens															
Pre-school	-	10	-	1	11	85	202	-	78	365	-	187	-	320	507
School Age	675	263	-	738	1,676	1,896	1,004	-	2,160	5,060	1,327	1,059	-	1,349	3,735
Children's Special Health Care Services															
Diagnostics	3	2	-	-	5	4	4	-	1	9	2	-	-	-	2
Assessments-Renewal	22	20	-	12	54	67	65	-	73	205	57	68	-	77	202
Assessments-New	9	2	-	9	20	15	20	-	21	56	12	13	-	22	47

**Branch-Hillsdale-St. Joseph Community Health Agency
Environmental Public Health Services
Report for the February 24, 2022 Board of Health Meeting
Prepared by Paul Andriacchi R.E.H.S, Director of Environmental Health**

Food Service Sanitation

Bronson Nutrition (a nutrition shake facility) is a new food establishment that opened in Branch County last month. There were three other new establishments that submitted plan reviews to our agency last month as well. All three of those facilities are located in St. Joseph County. There are at least three other food establishments that are proposing to open in St. Joseph County as well but we have not received plans for review yet.



We were hoping to start holding our food manager certification classes again after our shut down for Covid-19 but we had run into an issue with the exam provider. The provider that we use for the exams is still not willing to send out the exam booklets for in person testing. Once they allow for in person testing, we will resume our classes. In the meantime, we have instructed our managers to attend one of the many on-line classes that are available.

Well and Septic

We are still searching for candidates to fill our open sanitarian position in Hillsdale County. That position is a split position between the food program and field program. The position has been posted for almost 60 days and we have not gotten any qualified candidates to this point. We have expanded our search by posting the position to a number of colleges and universities to try and garner interest from students who may have recently graduated or will be graduating soon.

Other Programs

Follow up sampling was recently done in the White Pigeon PFAS site. All the homes that were tested during the initial investigation were going to be resampled. To date, I have not seen any results for this round of sampling.

I recently meet with staff members from EGLE and MDHHS to discuss another possible PFAS contamination site in St. Joseph County. In 2005 there was a tire fire at a tire recycling facility in Colon Township. It was reported that fire suppressant foam was used to fight this fire. As we now know, those foams, AFFF (aqueous film-forming foam) contain a two PFAS chemicals: PFOA-perfluorooctane acid and PFOS perfluorooctane sulfanic acid. The site of the fire is pretty remote, however there are 3 houses that are between site and the St. Joseph River. We are just in the early stages of the investigation but the initial plan is to do testing on the 3 nearby homes along with two others that are on the other side of the Joseph River. As this investigation proceeds, I will provide updates.

EH Service Statistics Report

BRANCH - HILLSDALE - ST. JOSEPH COMMUNITY HEALTH AGENCY

ENVIRONMENTAL HEALTH SERVICE REPORT 2021/2022

	JANUARY				YTD 2021/2022				YTD 2020/2021			
	BR	HD	SJ	TOTAL	BR	HD	SJ	TOTAL	BR	HD	SJ	TOTAL
WELL/SEWAGE SYSTEM EVAL.	-	-	1	1	-	-	10	10	2	-	2	4
CHANGE OF USE EVALUATIONS - FIELD	-	3	2	5	6	16	10	32	10	15	10	35
CHANGE OF USE EVALUATIONS - OFFICE	2	1	8	11	5	11	33	49	21	15	30	66
ON-SITE SEWAGE DISPOSAL												
PERMITS NEW CONSTRUCTION	3	4	3	10	21	17	17	55	8	24	23	55
REPAIR/REPLACEMENT	6	1	7	14	23	14	23	60	28	18	38	84
VACANT LAND EVALUATION	-	-	-	-	-	7	7	14	8	8	6	22
PERMITS DENIED	-	-	-	-	-	-	-	-	-	-	-	-
TOTAL	9	5	10	24	33	38	47	129	44	50	65	161
SEWAGE PERMITS INSPECTED	2	4	5	11	29	33	45	107	44	49	67	160
WELL PERMITS ISSUED	5	7	7	19	43	42	67	152	48	49	81	178
WELL PERMITS INSPECTED	12	9	57	78	28	42	105	175	79	52	54	185
FOOD SERVICE INSPECTION												
PERMANENT	13	20	21	54	64	83	86	233	69	60	71	218
NEW OWNER / NEW ESTABLISHMENT	1	-	-	1	2	2	5	9	-	1	-	1
FOLLOW-UP INSPECTION	2	2	-	4	6	2	8	16	2	-	2	8
TEMPORARY	1	-	-	1	3	7	5	15	1	4	10	15
MOBILE, STFU	-	-	-	-	3	-	6	9	-	1	4	5
PLAN REVIEW APPLICATIONS	-	-	3	3	5	-	7	12	-	-	-	-
FOOD COMPLAINTS RECEIVED	1	-	-	1	3	3	1	7	4	19	7	24
FOODBORNE ILLNESS INVESTIGATED	-	-	-	-	-	-	-	-	-	-	-	-
FOOD CLASSES												
MANAGEMENT CERTIFICATION CLASS	-	-	-	-	n/a	n/a	n/a	-	n/a	n/a	n/a	n/a
FOOD HANDLERS CLASS	-	-	-	-	n/a	n/a	n/a	-	n/a	n/a	n/a	-
METH LAB REFERRALS	-	-	-	-	-	-	-	-	-	-	-	-
METH LAB LETTERS SENT	-	-	-	-	-	-	-	-	-	-	-	-
CAMPGROUND INSPECTION	-	-	-	-	-	-	-	-	-	-	-	-
NON-COMM WATER SUPPLY INSP.	2	-	-	2	6	1	3	10	-	4	4	8
SWIMMING POOL INSPECTION	-	-	-	-	6	4	-	10	-	-	-	-
PROPOSED SUBDIVISION REVIEW	-	-	-	-	-	-	-	-	-	-	-	-
SEPTIC TANK CLEANER	-	-	-	-	-	-	-	-	-	-	-	-
DHS LICENSED FACILITY INSP.	1	6	6	13	5	11	12	28	3	12	6	21
COMPLAINT INVESTIGATIONS	1	1	1	3	6	6	6	18	-	9	4	13
LONG TERM MONITORING	-	-	-	-	-	-	-	-	-	-	-	-
BODY ART FACILITY INSPECTIONS	2	1	-	3	2	1	-	3	2	3	-	5

Inspection Type Count by County

For Date Range: 1/1/2022 - 1/31/2022 and Program: Food Service

County	Inspection Type	Count
Branch	Complaint	1
	Consult	1
	Follow-Up	2
	Pre-opening/New	1
	Progress Note	3
	Routine	13
	Temporary	1
Hillsdale	Follow-Up	2
	Progress Note	1
	Routine	20
St. Joseph	Consult	2
	Progress Note	6
	Routine	21
	Total number of inspections	74

2/15/2022 3:45:07 PM

Inspection Type Count

For Date Range: 1/1/2022 - 1/31/2022 and Program: Food Service

Inspection Type	Count
Complaint	1
Consult	3
Follow-Up	4
Pre-opening/New	1
Progress Note	10
Routine	54
Temporary	1
Total number of inspections	74

2/15/2022 3:44:21 PM

Establishment Inspection Report

For Date Range: 1/1/2022 - 1/31/2022 and Program: Food Service

Name	Location	Date	Inspection Type	# P	# Pf	# P/Pf Fixed During Inspection	# Core
Amaz'n Nutrition	Three Rivers	1/20/2022	Routine	0	0	0	0
AMIGO CENTRE (Food)	Sturgis	1/26/2022	Routine	0	0	0	0
ANN-DEE'S TAVERN	North Adams	1/20/2022	Routine	0	0	0	0
ARBY'S	THREE RIVERS	1/24/2022	Routine	0	1	0	1
BEST WESTERN PLUS	Coldwater	1/14/2022	Follow-Up	1	7	0	3
Big King Buffet of Dong INC	Three Rivers	1/10/2022	Progress Note	0	0	0	0
Biggby Coffee # 592	Coldwater	1/11/2022	Routine	0	0	0	0
BILL'S GRILL HOUSE	COLDWATER	1/25/2022	Routine	0	0	0	1
BLUE HAT COFFEE	COLDWATER	1/4/2022	Progress Note	0	0	0	0
Bronson Nutrition	Bronson	1/6/2022	Pre-opening/New	0	0	0	0
BUFFALO WILD WINGS	COLDWATER	1/19/2022	Complaint	0	0	0	0
Burger King #1416	Three Rivers	1/5/2022	Routine	0	1	0	2
BURR OAK GRANGE #1350	Burr Oak	1/5/2022	Progress Note	0	0	0	0
CAVONI'S	HILLSDALE	1/21/2022	Routine	0	0	0	0
CHURCH OF THE NAZARENE	STURGIS	1/5/2022	Progress Note	0	0	0	0
Community Action	COLDWATER	1/11/2022	Routine	0	0	0	0
COTTAGE INN PIZZA	COLDWATER	1/13/2022	Routine	1	1	0	0
Cottage Inn Pizza Sturgis	Sturgis	1/6/2022	Routine	0	0	0	1
Culver's of Three Rivers	Three Rivers	1/27/2022	Routine	0	0	0	0
DAYS INN HILLSDALE/MECHETA	Hillsdale	1/21/2022	Routine	0	0	0	0
DENISE'S DINER	Camden	1/4/2022	Routine	2	0	1	1
DENISE'S DINER	Camden	1/19/2022	Follow-Up	0	0	0	0
DQ GRILL & CHILL	Three Rivers	1/27/2022	Routine	0	0	0	1
El Camino Real	Three Rivers	1/20/2022	Routine	1	2	0	1
EL TACO LOCO II	COLDWATER	1/13/2022	Routine	2	2	0	1
FIRST BAPTIST CHURCH	COLDWATER	1/19/2022	Routine	0	0	0	1
FIVE STAR PIZZA	BRONSON	1/26/2022	Routine	0	1	0	1
Goody's Sauk Trail Diner	Jerome	1/7/2022	Routine	0	0	0	0
HANDMADE SANDWICHES & BEVERAGES	HILLSDALE	1/10/2022	Routine	0	0	0	1

2/15/2022 3:43:20 PM

Name	Location	Date	Inspection Type	# P	# Pf	# P/Pf Fixed During Inspection	# Core
Hank's Tavern On The River	Three Rivers	1/25/2022	Routine	0	0	0	1
HEALTHIES OF HILLSDALE	HILLSDALE	1/10/2022	Routine	0	0	0	0
HILLSDALE COUNTY CONSERVATION CLUB	OSSEO	1/28/2022	Routine	0	0	0	0
HILLSDALE COUNTY CONSERVATION CLUB	OSSEO	1/31/2022	Progress Note	0	0	0	0
JOHNNY T'S BISTRO	HILLSDALE	1/11/2022	Routine	0	0	0	0
Kentucky Fried Chicken Three Rivers	Three Rivers	1/10/2022	Routine	0	0	0	1
LITTLE CAESARS #1200-001	Three Rivers	1/10/2022	Routine	0	0	0	1
LITTLE CAESARS PIZZA	HILLSDALE	1/5/2022	Routine	0	0	0	1
LONE RANGER CAFE	READING	1/31/2022	Routine	0	0	0	0
Main Street Cafe II	Three Rivers	1/14/2022	Routine	0	0	0	0
MAIN STREET PIZZA	JONESVILLE	1/7/2022	Routine	0	0	0	0
MASONVILLE PLACE	COLDWATER	1/19/2022	Routine	0	1	0	1
MCDONALD'S OF QUINCY	QUINCY	1/25/2022	Routine	0	0	0	0
McDONALDS OF STURGIS 2180	Sturgis	1/6/2022	Routine	1	0	0	3
McDONALDS OF THREE RIVERS #2196	Three Rivers	1/5/2022	Routine	0	0	0	2
MCDONALD'S-HILLSDALE	HILLSDALE	1/5/2022	Routine	0	0	0	0
MESSIAH LUTHERAN CHURCH	Constantine	1/11/2022	Routine	0	0	0	0
Micharepas Cafe	Coldwater	1/12/2022	Routine	0	3	0	2
MR GYROS	COLDWATER	1/12/2022	Routine	0	0	0	1
OLIVIA'S CHOP HOUSE	JONESVILLE	1/18/2022	Routine	0	0	0	0
Our Bar	LEONIDAS	1/27/2022	Progress Note	0	0	0	0
Pigeon Inn	White Pigeon	1/13/2022	Routine	0	0	0	0
PIPER'S GRINDERS GALORE	Constantine	1/13/2022	Routine	0	0	0	0
Pipers Pizza	Sturgis	1/10/2022	Consult	0	0	0	0
PLANET POWERSPORTS	COLDWATER	1/12/2022	Progress Note	0	0	0	0
RAY'S TAVERN	READING	1/31/2022	Routine	0	0	0	0
READING PIZZA BARN	READING	1/20/2022	Routine	0	0	0	0
READING UNITED METHODIST CHURCH	READING	1/20/2022	Routine	0	0	0	0
River Trade Brewing Co	Constantine	1/24/2022	Consult	0	0	0	0
ROSALIES ROADHOUSE	Jonesville	1/6/2022	Routine	0	1	1	1
ROUGH DRAFT	HILLSDALE	1/18/2022	Follow-Up	0	0	0	0

2/15/2022 3:43:20 PM

Name	Location	Date	Inspection Type	# P	# Pf	# P/Pf Fixed During Inspection	# Core
SALVATION ARMY	Sturgis	1/6/2022	Routine	0	0	0	1
Shawn Cockrell Memorial Invitational	Quincy	1/22/2022	Temporary	0	0	0	0
St. John's Lutheran Church	Burr Oak	1/5/2022	Progress Note	0	0	0	0
St. Joseph County COA @ Kline's Resort	Three Rivers	1/21/2022	Routine	0	0	0	0
St. Paul's Lutheran Church	COLON	1/5/2022	Progress Note	0	0	0	0
STINGER'S GRILL & BAR	BRONSON	1/26/2022	Routine	1	1	0	2
SUBWAY # 19719	COLDWATER	1/21/2022	Consult	0	0	0	0
SUBWAY #1951	COLDWATER	1/4/2022	Follow-Up	0	0	0	0
THE GREAT WALL	HILLSDALE	1/25/2022	Routine	0	0	0	0
The Landmark Tap House & Grille	Three Rivers	1/14/2022	Routine	0	0	0	0
The Saucy Dog's BBQ	JONESVILLE	1/18/2022	Routine	2	0	2	0
TIP-UP ISLAND	QUINCY	1/12/2022	Progress Note	0	0	0	0
UNION CHURCH OF QUINCY	QUINCY	1/25/2022	Routine	0	0	0	1
YMCA CAMP EBERHART (Food)	Three Rivers	1/20/2022	Routine	0	0	0	0

Food Inspection Codes:

P-This indicates a priority violation which is a violation which includes a quantifiable measure to show control of hazards such as cooking, cooling, reheating and handwashing. It is in general terms a violation that can potentially lead directly to an illness.

Pf-This is a priority foundation violation which is a violation that supports a priority violation. For example, the lack of soap or towels at a handwash sink is a Pf. This supports the priority violation of not washing hands.

C-This is a core violation-This is an item the usually relates to general sanitation, operational controls and maintenance of facilities and equipment.

2/15/2022 3:43:20 PM