



BRANCH-HILLSDALE-ST. JOSEPH
COMMUNITY HEALTH
AGENCY | YOUR LOCAL
HEALTH DEPARTMENT

ANNUAL REPORT

2019

Board of Health



Terri Norris
Branch County



Bruce Caswell
Hillsdale County
(Vice Chairperson)



Allen J. Balog
St. Joseph County



Don Vrablic
Branch County
(Chairperson)



Mark E. Wiley
Hillsdale County



Kathy Pangle
St. Joseph County

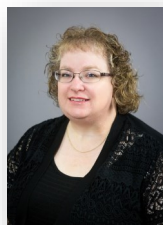
Agency Directors



Rebecca Burns,
MPH, RS
Health Officer



Dr. H. Lauren Vogel, DO, MPH
Medical Director



Theresa Fisher
Director of
Administrative
Services



Paul Andriacchi,
REHS
Director of
Environmental
Health

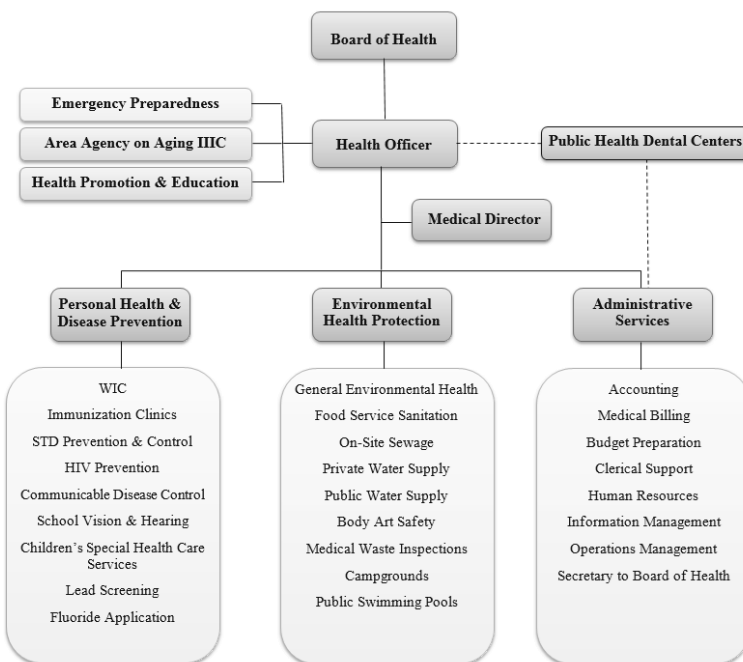


Yvonne Atwood, RN,
BSN
Director of Personal
Health & Disease
Prevention



Laura Sutter,
Director of Area
Agency on Aging
3C

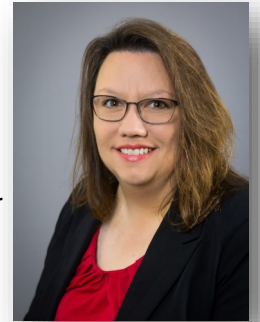
Organizational Chart



Letter to the Community

Letter to the Community:

Everyone at the Branch-Hillsdale-St. Joseph Community Health Agency (BHSJCHA) works hard to be “Your Local Health Department” and put our clients first. The 2019 Annual Report highlights the best from “Your Local Health Department” and we are pleased to share our year in review.



To begin Fiscal Year 2019 (FY19) Your Local Health Department received the Accreditation Certificate for the review that occurred in FY18 by a spokesperson from the Michigan Department of Health and Human Services. The Agency received Accreditation with Commendation, the highest honor.

The Area Agency on Aging IIIC (Branch & St. Joseph counties are a department within BHSJCHA) spent much of FY19 working on the Multi-Year Planning Cycle. The multi-year plan (3-year) is informed by a needs assessment conducted of local residents and providers with questions designed to learn about the needs of older adults and their caregivers. The completed needs assessment provides direction to the AAA IIIC on how to focus federal and state funds funneled through the Agency that are used to meet the real needs of residents in Branch and St. Joseph counties. Potential contractors then submit bids through a request for proposals (RFP) process. Successful bidders were approved by the Board of Health who took action on awards. Every third year this process begins again and we find it a valuable exercise in determining how to best serve the needs in the older adults in Branch and St. Joseph counties.

The Environmental Health (EH) section of Your Local Health Department focused on a new emerging threat in groundwater, PFAS, and worked to provide technical assistance to the operators of a water supply that was found to contain Legionella bacteria. The EH staff continued to work toward full implementation of the software product they acquired called HealthSpace.

The Health Education section was awarded a new grant to work on medical marijuana called the Medical Marijuana Operation & Oversight grant. The proposal accepted by our Agency focused on “Lock It Up” and provided information and tools to help residents in Branch, Hillsdale, and St. Joseph counties keep their medical marijuana out of the hands of kids. The Health Educators were careful to focus not on the use of marijuana, but simply on the safety for those that aren’t prescribed the product. The program was a great success, with more demand for the lock boxes made available than we could supply.

The Personal Health & Disease Prevention section (PHDP) saw the end of the Hepatitis A Outbreak in Michigan during FY19. The increased focus on Hepatitis A vaccination in high risk populations was integral in slowing and eventually stopping the spread. Measles became a potential threat with larger numbers of cases than expected in SE Michigan and cases in Chicago IL; putting BHSJCHA perfectly in the middle for potential spread to unvaccinated individuals. Pertussis cases in Hillsdale county were also high during FY19. Misinformation on vaccine safety (available widely on social media and the internet) have increased the number of unvaccinated individuals making it more likely that diseases once thought to be eradicated are again a risk to the public health. Finishing out FY19 was an outbreak of EEE with more human cases of the disease than all previous years combined. This particularly devastating mosquito borne disease is not new to our area but the climate conditions kept the population of mosquitos that spread the disease around longer. Finally, PHDP began utilization of the new EMR, Nightingale Notes, that offered real-time communication with MICR and an improved billing system for BHSJCHA.

The team at Your Local Health Department will continue to support you and your family.

Yours in Good Health,

Rebecca A. Burns, MPH, RS

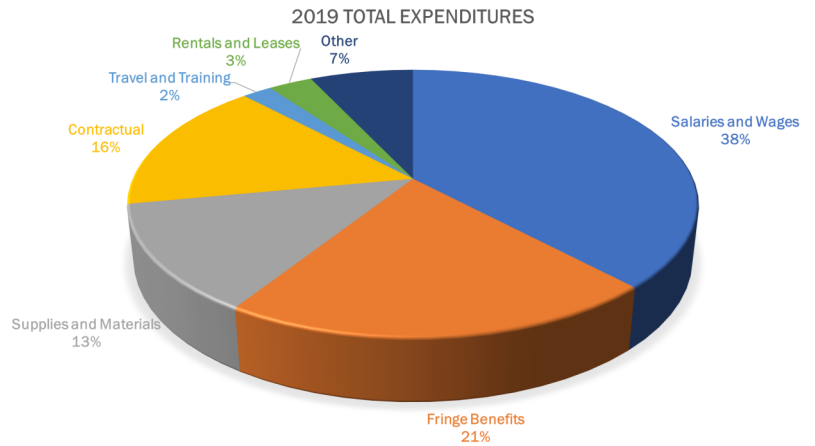
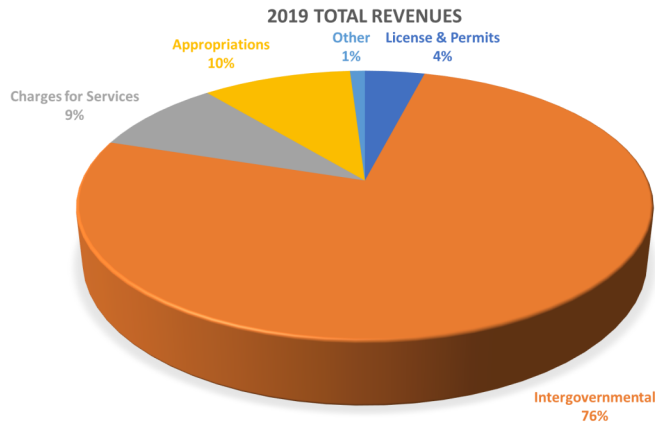
Our vision...

We envision positively impacting the health of individuals, families, communities and the environment through responsiveness, competence and collaboration.

Our mission...

We promote optimal health to prolong life, by preventing disease and assuring protection of the public’s health in our community and environment.

Finance



Fiscal Year 2018/2019

Total Annual Budget Based on Actuals: \$6,561,186

Public Health Dental Services



Age	Coldwater	Hillsdale	Three Rivers	Sturgis	Total
0-4	1.7%	2.3%	4.5%	4.5%	3.3%
5-14	8.3%	11.2%	17.7%	17.2%	13.7%
15-20	5.3%	5.1%	10%	6.8%	6.8%
21-60	66.7%	64.9%	54.6%	56.8%	60.6%
60+	18.1%	16.4%	13.1%	14.7%	15.5%

	Coldwater	Hillsdale	Three Rivers	Sturgis	Total
Number of Patient Visits	4,855	4,647	4,941	5,522	19,965
Service Mix:					
Medicaid	27.9%	40.2%	23.9%	18.6%	26.9%
Healthy Michigan Plan	26.8%	23.1%	22.8%	20.5%	23.5%
Traditional Insurance	26.4%	16.3%	20.0%	28.8%	23.1%
Delta Healthy Kids	9.8%	13.7%	22.3%	18.7%	16.3%
MyDP/NDP	9.2%	6.7%	10.9%	13.4%	10.2%

"The dentist was very gentle and attentive to my concerns. His assistant was wonderful too. Best experience at a dental office I've ever had! I recommend them to everyone!" – Bobbi, My Community Dental Center, Coldwater

"Everyone here is amazing! They work well with my daughter and always make it a fun experience. This is by far one of the best dental places I've been to. My whole family comes here!" – Destiny, My Community Dental Center, Hillsdale

"Excellent experience every time I have been there. Everyone from the front staff, assistants, hygienists and the dentist are friendly, patient, and very professional. This place is the best, I would highly recommend going there!" – Jacqueline, My Community Dental Center, Three Rivers

County Health Profile

Profile - 2018	Branch County	Hillsdale County	St. Joseph County	Michigan
Population	43,622	45,749	61,043	9,995,915
Marriage	258	315	414	56,374
Divorce	165	187	225	28,186
% of Population 65+ years	18.2%	19.6%	18.0%	17.2%
Leading Causes of Death (2018)	Branch County	Hillsdale County	St. Joseph County	Michigan
Heart Disease	23.2%	24.5%	25.1%	25.6%
Cancer	22.4%	24.1%	18.1%	21.2%
Chronic Lower Respiratory Disease	9.1%	9.1%	6.4%	5.8%
Unintentional Injuries	7.3%	5.3%	6.8%	5.6%
Stroke	5.2%	4.9%	5.8%	5.2%
Alzheimer's Disease	3.3%	5.3%	3.1%	4.5%
Diabetes Mellitus	1.9%	2.5%	3.4%	2.9%
Kidney Disease	1.7%	1.4%	2.8%	2.0%
Pneumonia & Influenza	2.9%	1.6%	1.8%	1.9%
Intentional Self-Harm - Suicide	1.0%	1.8%	2.8%	1.6%
Maternal/Infant Health Indicators (2018)	Branch County	Hillsdale County	St. Joseph County	Michigan
Number of Live Births	603	526	777	110,093
Number of Teen Births (age 15-19)	45	44	69	8,445
Teen Pregnancy Rate (per 1,000 births)	35.0	27.7	35.8	26.4
% Low Birth Weight	5.8%	4.6%	6.2%	8.5%
% Very Low Birth Weight	1.3%	**	0.9%	1.4%
% Adequate Prenatal Care - Kessner Index (2017)	49.7%	51.8%	43.9%	67.9%
Infant Mortality Rate (per 1,000) (Average - 2014-18)	8.8	6.3	5.4	6.7
Economic Indicators (2017 County Health Rankings)	Branch County	Hillsdale County	St. Joseph County	Michigan
% Unemployment	4.7%	5.0%	4.3%	4.6%
Median Household Income	\$49,400	\$47,600	\$50,900	\$54,800
% Children Eligible for Free & Reduced Lunch (185% of Poverty)	52.0%	51.0%	57.0%	46.0%

** Rate does not meet standards of precision or reliability.

Personal Health & Disease Prevention

WIC

What is WIC?

The Special Supplemental Nutrition Program for Women, Infants and Children (WIC) is a public health nutrition program under the USDA that provides

- nutrition education
- nutritious foods
- breastfeeding support
- healthcare referrals

for income-eligible women who are pregnant or post-partum, infants, and children up to age 5.

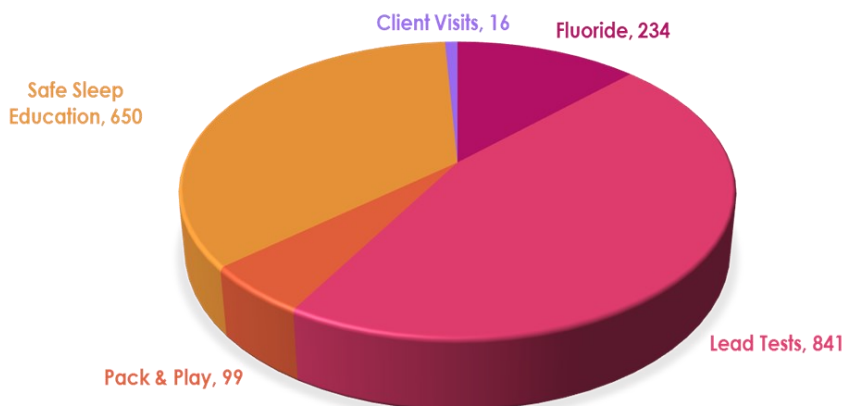
How can WIC help my family?

WIC can...

- Reduce premature births
- Reduce low birth-weight babies
- Reduce fetal and infant deaths
- Improve diet quality
- Increase access to regular healthcare
- Increase immunization rates
- Increase access to prenatal care
- Increase pregnant women's consumptions of vital nutrients

WIC average monthly participation				
County	2015/16	2016/17	2017/18	2018/19
Branch	1,504	1,409	1,315	1,247
Hillsdale	1,270	1,192	1,115	988
Sturgis	742	799	768	766
Three Rivers	1,358	1,128	1,024	982
Total	4,875	4,528	4,223	3,988

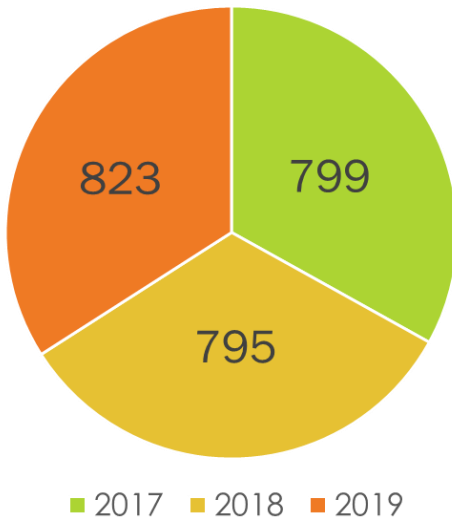
BHSJ WIC HIGHLIGHTS: 2019



Children's Special Health Care Services

Children's Special Health Care Services (CSHCS) provides services to children with special needs and their families. You are eligible for CSHCS if you are a Michigan resident, between the ages of 0-21 years, have a qualifying medical condition and seeing a specialist. CSHCS covers up to 3,000 various conditions and is available to families at all income levels.

Children's Special Health Care Services



Nicole Ewers, Representative, Madonna Hilarides, RN, Terri Penney, RN, Program Coordinator, Tina Lutz, Representative

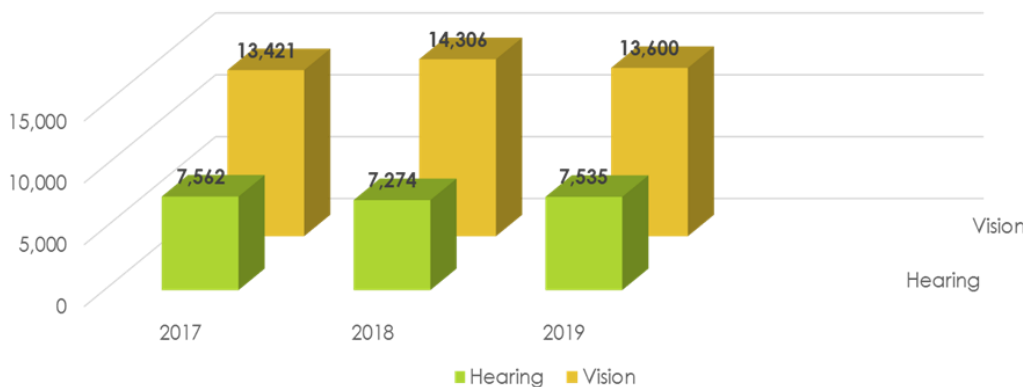
The Michigan Department of Health and Human Services (MDHHS) provides FREE hearing and vision screenings to all children in Michigan. Screenings are conducted in schools or at BHSJ Community Health Agency.

- An undiagnosed hearing and/or vision problem may interfere with development
- Early detection and treatment of hearing and vision problems can help children succeed in school.
- Screenings are conducted by fully trained hearing and vision technicians.
- 10% of children screened for vision and 5% screened for hearing are referred to specialists.



Hearing and Vision Technicians:
Carol Anderson, Emily Young, Nicole Ewers, Kim Schoneboom

BHSJ Hearing & Vision Screening



Communicable Disease

Disease	2015	2016	2017	2018	2019	Total
HIV/AIDS, Adult	3	0	3	0	0	6
Campylobacter	19	40	33	39	40	171
Cryptosporidiosis	9	8	8	7	13	45
Giardiasis	2	7	6	7	6	28
Norovirus	3	0	30	1	18	52
Salmonellosis	16	29	27	28	26	126
Shiga toxin-producing Escherichia coli	0	0	0	0	5	5
Shigellosis	3	0	2	0	2	7
Yersinia enteritis	0	0	0	2	2	4
Meningitis - Aseptic	8	4	1	5	3	21
Meningitis - Bacterial Other	2	2	1	1	1	7
Meningococcal Disease	0	0	0	0	2	2
CP-CRE	0	0	0	1	3	4
Coccidioidomycosis	0	0	1	2	1	4
Cryptococcosis	1	0	0	0	0	1
Encephalitis, Primary	0	0	0	1	1	2
Guillain-Barre Syndrome	2	0	0	0	1	3
Hemolytic Uremic Syndrome	1	1	1	1	0	4
Histoplasmosis	5	3	2	0	6	16
Legionellosis	1	2	2	0	4	9
Rabies Animal	3	0	0	3	0	6
Chlamydia (Genital)	446	399	421	467	404	2137
Gonorrhea	24	45	54	119	162	404
Syphilis	2	7	9	0	0	18
Tuberculosis	1	0	0	0	0	1
Chickenpox (Varicella)	11	14	0	4	4	33
H. influenzae Disease - Inv.	0	2	2	3	1	8
Measles	0	0	0	0	0	0
Mumps	0	0	0	0	0	0
Pertussis	1	2	7	7	14	31
Lyme Disease	0	3	0	0	3	6
West Nile Virus	0	0	0	1	0	1
Zika	0	2	0	0	0	2
Hepatitis A	0	2	3	2	1	8
Hepatitis B, Acute	0	0	1	0	2	3
Hepatitis B, Chronic	3	7	4	1	1	16
Hepatitis C, Acute	2	0	0	0	0	2
Hepatitis C, Chronic	82	78	78	61	42	341

Communicable Disease: What is it?

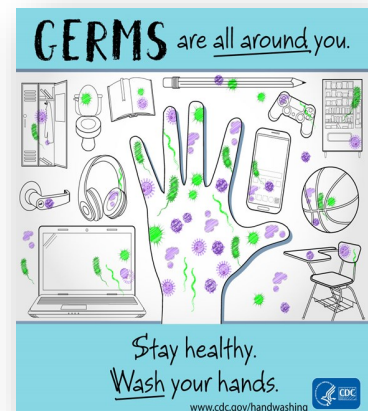
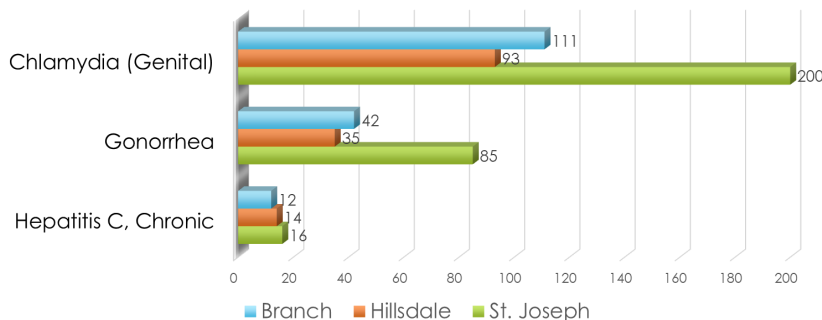
Disease caused by microorganisms such as bacteria, viruses, parasites, and fungi that can be spread, directly or indirectly, from one person to another.

Transmission can occur through insect bites, human to human contact, and ingestion of contaminated food or water.

- World Health Organization

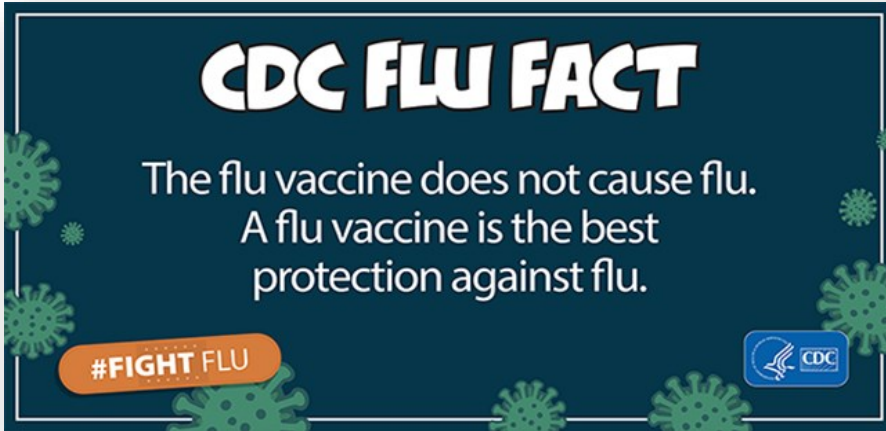
How can we prevent the spread of disease?

1. Properly wash your hands often.
2. Handle and prepare food safely.
3. Keep up on your vaccinations.
4. Avoid sharing personal items.
5. Stay home when you feel sick.
6. Clean and disinfect commonly used surfaces.
7. Avoid touching wild animals.



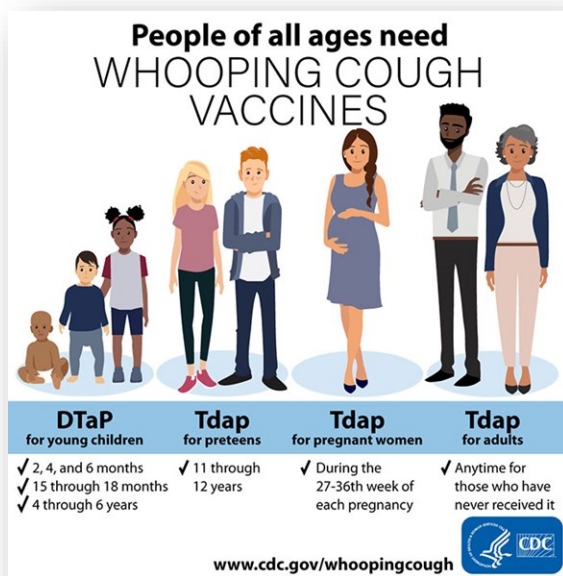
Immunizations

BHSJ Vaccines Administered	2016/17	2017/18	2018/19
Influenza Only	1,866	1,498	2,046
Total Vaccines	10,732	9,547	10,067



Vaccines - What should you know?

- We need vaccines to help protect against serious disease.
- Outbreaks of vaccine preventable disease can and still do happen in our communities.
- The CDC and FDA take many steps to make sure our vaccines are safe.
- Vaccines protect our children from getting sick.
- Vaccines are for everyone!

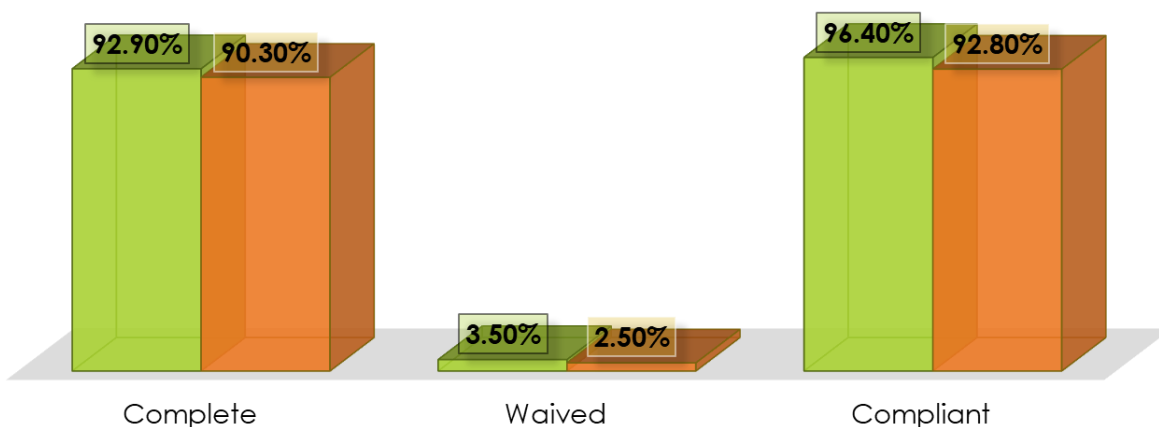


BHSJ's Top Administered Vaccines (2019)

1. Tdap
2. Hepatitis A (Adult)
3. Hepatitis A (Pediatric)
4. HPV
5. PCV13

BHSJ School/Childcare Compliance

■ Schools ■ Childcare



Area Agency on Aging (IIIC)

Our mission is to provide a full range of high quality services, programs, and opportunities which promote the independence and dignity of older adults while supporting those who care for them throughout Branch and St. Joseph Counties.

Please contact the Branch-St. Joseph Area Agency on Aging for specific information and assistance at: **(517) 278-2538** or toll free **(888) 615-8009**.



Laura Sutter,
Director

- We place the people we serve at the center of our operations, honoring their preferences and privacy.
- We assure efficient use of public and private resources.
- We develop programs and services using an inclusive process to promote healthy aging and livable communities for all ages
- We exhibit strong leadership which responds to changing needs and fosters collaboration and cooperation through the communities we serve.
- We use effective communication to carry out our mission and vision in an open, respectful and unbiased manner.



Over the past year the Area Agency on Aging has actively developed programs and partnerships across the two-county planning & service area. Here are a few highlights:

Elder Abuse Prevention &

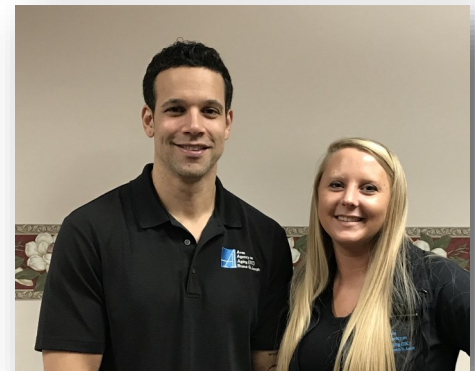
Awareness: The “Services to Victims of Elder Abuse” (SVEA) project began October 1, 2018 as a new program in our region. Our agency was chosen as one of three projects across the state pioneering efforts to directly serve victims of elder or dependent adult abuse, neglect and/or exploitation. Competitive funding was awarded by the Division of Victim Services at the Michigan Department of Health & Human Services. The funding is dedicated to support two full-time Elder Abuse Victim Specialists, present training and specialized outreach in the community and enhance collaboration among



existing elder/vulnerable adult abuse prevention groups.

Over the course of the year we served 75 victims through personal advocacy, emotional support & safety services, shelter/housing services, and assistance with the criminal justice system. In addition, we trained over 210 individuals at community partner agencies & organizations including: service clubs, fire departments, law enforcement agencies, and Branch and St. Joseph County Transportation Authorities. We are

developing a volunteer component to the program as well as specialized training for law enforcement and first responders. If you would like more details or to become more involved in your community’s efforts to prevent vulnerable adult abuse, neglect or exploitation, feel free to call our office.



Josh Englehart and Danielle Newhouse,
Elder Abuse Victim Specialists

Community Living Program

continues to soar! Since 2005 the Area Agency on Aging has served older adults with complex needs through the Community Living Program. In 2019 we served over 100 individuals, many of whom have other agencies involved and are significantly at risk of needing institutional care. Our goals remain: to offer a person centered approach, honoring preferences and strengths; to serve those greatest in need; and, allow participants to age in place. If you would like more information about the Community Living Program or other supports available in your community, please contact our office!



Back (L to R): Josh Englehart, Bonnie Williamson, Karri Doty, Laura Sutter Front (L to R): Katelyn Hamlin, Dawn Elliott, Danielle Newhouse, Meggie Segura

Senior Project FRESH is a program aimed at helping older adults eat healthier as they age. The program provides participants free nutrition counseling and \$20 in coupons. The coupons may be redeemed for fresh fruits, vegetables, and other healthy foods sold at participating local farmers markets and roadside stands. Residents who are age 60 or older with a total household income of \$22,459 or less for an individual, or \$30,451 for a couple, are eligible to apply for the program through our office.

Three local markets participated in 2019 across our planning and service area: Hoff's Market in Coldwater, Byler's Farm Market in Sturgis, and Three Rivers Farmers Market in Three Rivers. Overall, nearly 450 residents received coupons and our local redemption rate is much higher than many other areas across the state. If you would like to participate in this program, please contact our office.



Services	Totals	Units
Operations	\$113,534	N/A
Nutrition	\$659,584	166,755
In-Home	\$321,131	39,217
Community	\$74,947	4,084
Access	\$412,429	22,306
Legal	\$10,345	351

Population Served**	
Total Population 18+*	6,568
White (non-Hispanic)	6,326
African American	84
Asian/Pacific Islander	7
American Indian/Alaskan	13
Hispanic (of any race)	33
Below Poverty	2,170
Rural	6,568

* In general, services are targeted to those who are 60 year of age or older unless otherwise allowed under eligibility criteria for a specific program.

**Data based on self-reported numbers by participants, choosing to identify race/ethnicity is not required.

Health Education & Promotion

Health Education

The Health Education and Promotion Division of the Branch-Hillsdale-St. Joseph Community Health Agency is responsible for a broad range of services offered to schools, communities, professional groups and individuals on a variety of health topics.

	FY 2019
Community Events/Presentations	62
Medical Marijuana Lock Boxes	1,080
Safe Kids Inspection Stations	187

The Health Education and Promotion staff attended over 60 community events in all three counties in FY 2019 to give area residents information on agency services that include WIC, Immunizations, Infant Safe Sleep, Environmental Health services, Breastfeeding, Child Passenger Safety, Tobacco Cessation, and much more.



According to the Michigan Profile for Healthy Youth (MiPHY) survey, more than 51% of students in the tri-county area have very easy or easy access to marijuana. Because of that, staff from the Health Education and Promotion Team applied for and received a grant from LARA to educate the community

on the importance of locking up Medicinal Marijuana. 1,080 lock boxes were ordered and distributed. The boxes were FREE and were given out to any tri-county resident that was in need.

To promote the importance of “Lock it Up”, staff:

- Utilized over 10 community partners for distribution across the Tri-County area,
- attended community events,
- placed billboards in each county,
- posted on social media
- radio ads, and
- presented to local service groups, collaboratives, and coalitions.



Our Health Educators work with youth from our area schools to promote healthy lifestyles, including healthy relationships, drug and alcohol prevention, tobacco cessation, safe driving habits, anti-bullying, etc.

Kick Butts Day 2019 took place at the Capitol in Lansing on March 20th, 2019. Students from Coldwater



High School, Jonesville High School and Reading High School met up with others across the State to advocate for the Tobacco 21 Law. They met with legislators and spoke in the Rotunda about how tobacco has affected their lives negatively.



Left: Lock box and materials that were provided free for county residents. Above: the billboard that was displayed in all three counties.

Emergency Preparedness

Emergency preparedness encompasses the planning and response to disasters. A disaster is defined by the World Health Organization (WHO) as a sudden phenomenon of sufficient magnitude to overwhelm the resources of a hospital, region, or location requiring external support. The Emergency Preparedness team at BHSJ works hard every year to be ready in any event. Emergency Preparedness is an essential service area of Public Health responsibility. Public Health threats are always present whether caused by natural, accidental or intentional means. The outbreaks of 2016 Zika, 2015 Avian H5N2 Flu, 2014 Ebola underscore the importance of having a prepared agency and community. Public Health provides the leadership for medical countermeasure response. We maintain numerous plans and alert systems and do training, drills and exercises with local, regional and state partners in the healthcare, law enforcement and government sectors.

2019 Highlights

- **PFAS Testing** - We were involved in arranging meetings and monitoring the testing done by the State to make sure our communities were informed. Surprisingly high numbers were reported in a Branch County area which had the potential to spill over into St. Joseph County; however, further testing revealed this to be an anomaly created by the discharge from a manufacturing facility.
- **Legionnaires Disease outbreak investigation** - While the situation continues to be monitored, Emergency Preparedness and Environmental Health worked closely to keep our Agency informed of the progress made.
- **Regional Table Top** - Pandemic Response. This focused on testing our abilities to communicate and coordinate with our partners in the face of a highly infectious fatal pandemic as well as our ability to deal with a large number of fatalities related to it.
- **Regional Distribution Node** - As the State had tasked us with continuing to develop strategies to be able to administer mass amounts of pharmaceuticals to the populace in short periods of time, our Regional partner Health Department's EPC's put together the first Regional Distribution Node in the history of the State. Excellent results were had including interface with the State via computers to inventory and disperse medications to our various Dispensing Sites.
- **Update of Emergency Operations Plan** - Intern from Western Michigan University, Grace Wood, assisted in this project, and was also instrumental in the creation of the Measles Outbreak Table Top Exercise.
- **Table Top Exercise - Measles Outbreak** - This exercise was well attended by the Hillsdale County partners and was facilitated by Hillsdale County Emergency Management. This exercise will be maintained as a basis for testing our community response to such events in our other two counties.

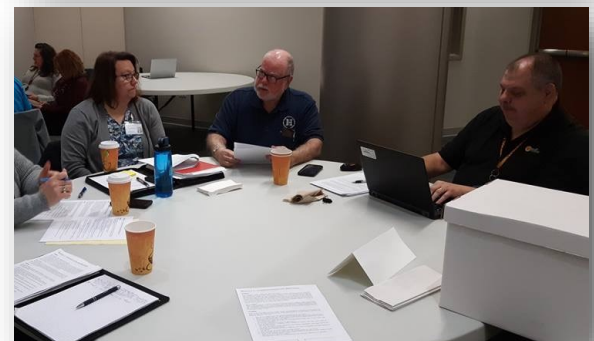
Top Hazards for Branch, Hillsdale, and St. Joseph Counties

Environmental:

- Floods
- Tornadoes/Severe Storms
- Winter Weather

Chemical:

- Releases of chlorine, ammonia and other hazardous chemicals from manufacturing/agricultural businesses.



Top: Law Enforcement Officers and National Guard participate in Regional Distribution Node

Bottom: Rebecca Burns, Health Officer, Dr. Vogel, Medical Director, and Jim Cook, Emergency Preparedness Coordinator participate in the Regional Infectious Disease/Mass Fatality Exercise

Environmental Health

Food Protection

This program provides a systematic approach to minimize the risk of food-borne illness and to ensure that food meets consumer's expectations through application of statewide standards for all establishments where food is prepared and/or served to the public.

	2018	2019
Establishment Inspections	904	869
Plans Reviewed	19	21
Temporary Food Establishment Inspections	209	213
Food Manager Certification Classes (number of attendees)	212	187
TOTAL	1,344	1,290



Back (L to R): James Young, Dave Wagoner, Cody Johnson, Carrie Southern, Ben Aalberts, Lee Zimmerman, Paul Andriacchi

Front (L to R): Joe Frazier, Brandi Lennox, Elizabeth Howard, Stephanie Hough, Annalisa Rice, Stephanie Wolgast, Barb Keith, Bethany Pirman

Other Programs

Although the well, septic, and food programs require the biggest portion of the environmental health staff focus, we do have responsibilities in other programs.

	2018	2019
Medical Waste Inspections	50	32
Swimming Pool Inspections	54	54
Campground Inspections	65	65
Body Art Facility Inspections	8	8
DHHS Inspections (daycare, foster care, etc.)	122	98
Septic Hauler Inspections	41	38
TOTAL	340	295

Private and Public Water Supply

These programs are designed to assure both the proper installation of residential water wells and the monitoring and regulating of Type II Public Water Supplies to assure safe usable groundwater.

	2018	2019
Well Construction Permits Issued	553	510
Well Permits Inspected	425	410
New Water Supplies Approved	339	491
Non-Community Water Supply Inspections	34	87
TOTAL	1,351	1,498

On-Site Sewage

Reviews sites proposed for sewage disposal, issuance and/or denial of permits, sewage evaluation, inspection, investigation and enforcement.

	2018	2019
Well/Septic Evaluations	30	24
Construction Permits	420	456
Septic Systems Inspected	348	361
Vacant Land Evaluations	43	32
TOTAL	841	837

Interactions with the environment affect quality of life, years of healthy life lived, and health disparities. The World Health Organization (WHO) defines environment, as it relates to health, as “all the physical, chemical, and biological factors external to a person, and all the related behaviors.” Environmental health consists of preventing or controlling disease, injury, and disability related to the interactions between people and their environment.

This page has intentionally been left blank.



Branch County Office
570 N. Marshall Rd.
Coldwater, MI 49036
(517) 279-9561

Hillsdale County Office
20 Care Dr.
Hillsdale, MI 49242
(517) 437-7395

St. Joseph County Office
1110 Hill St.
Three Rivers, MI 49093
(269) 273-2161

St. Joseph County Off-Site Clinic
Medical Commons II
1555 E. Chicago Rd.
Suite C
Sturgis, MI 49091
Open Wednesday–Friday
(269) 273-2161

