

HSN Report

Adults

October, 2010



Population – The Workforce for Hillsdale County

Population 1990 – 43,292

Population 2006 – 47,206

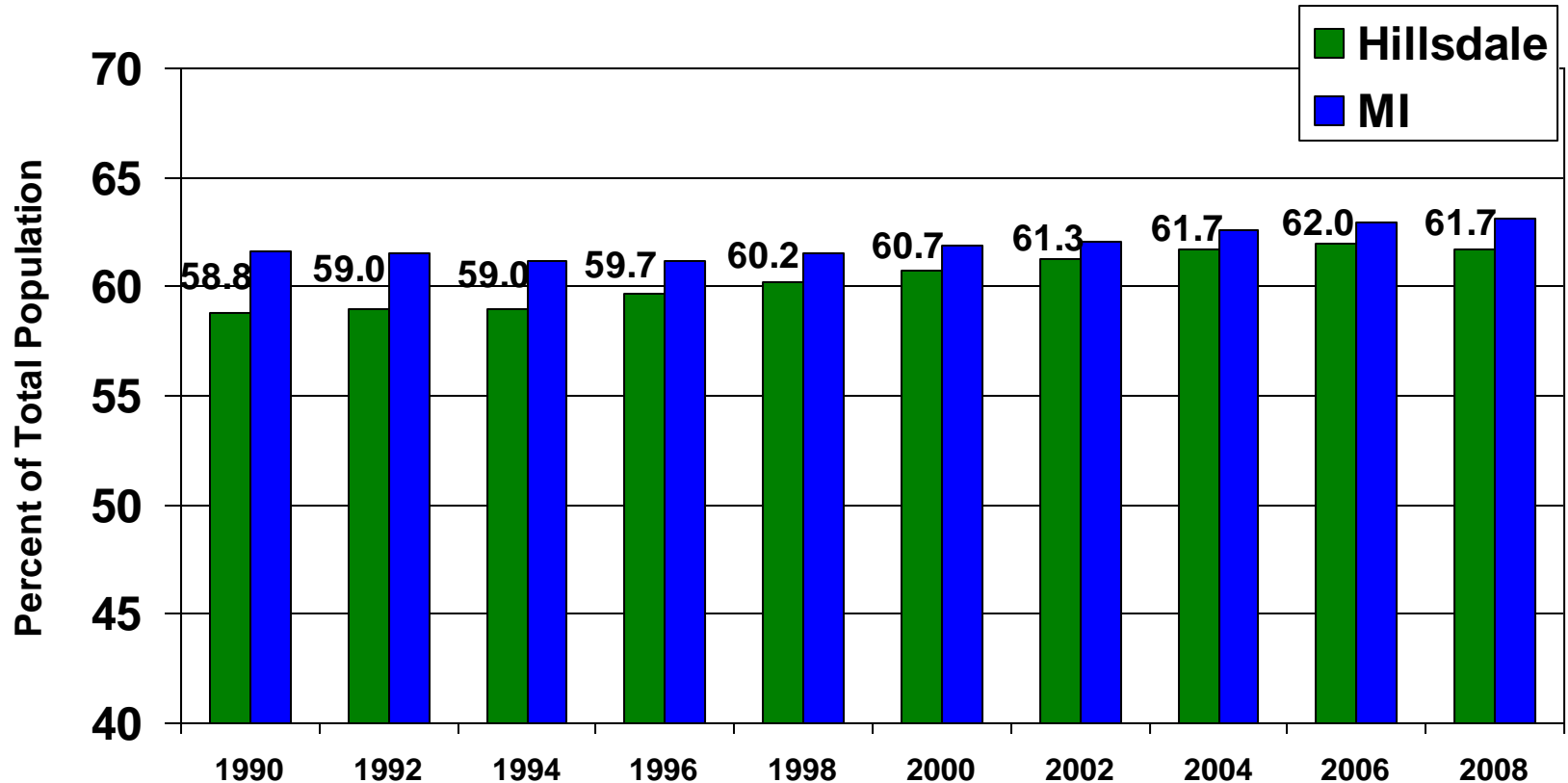
Population 2009 (est.) – 45,650

<http://quickfacts.census.gov/qfd/states/26/26059.html>

Population Trends 1990 to 2008

% of Population aged 18-65 years

Source – Michigan Department of Community Health

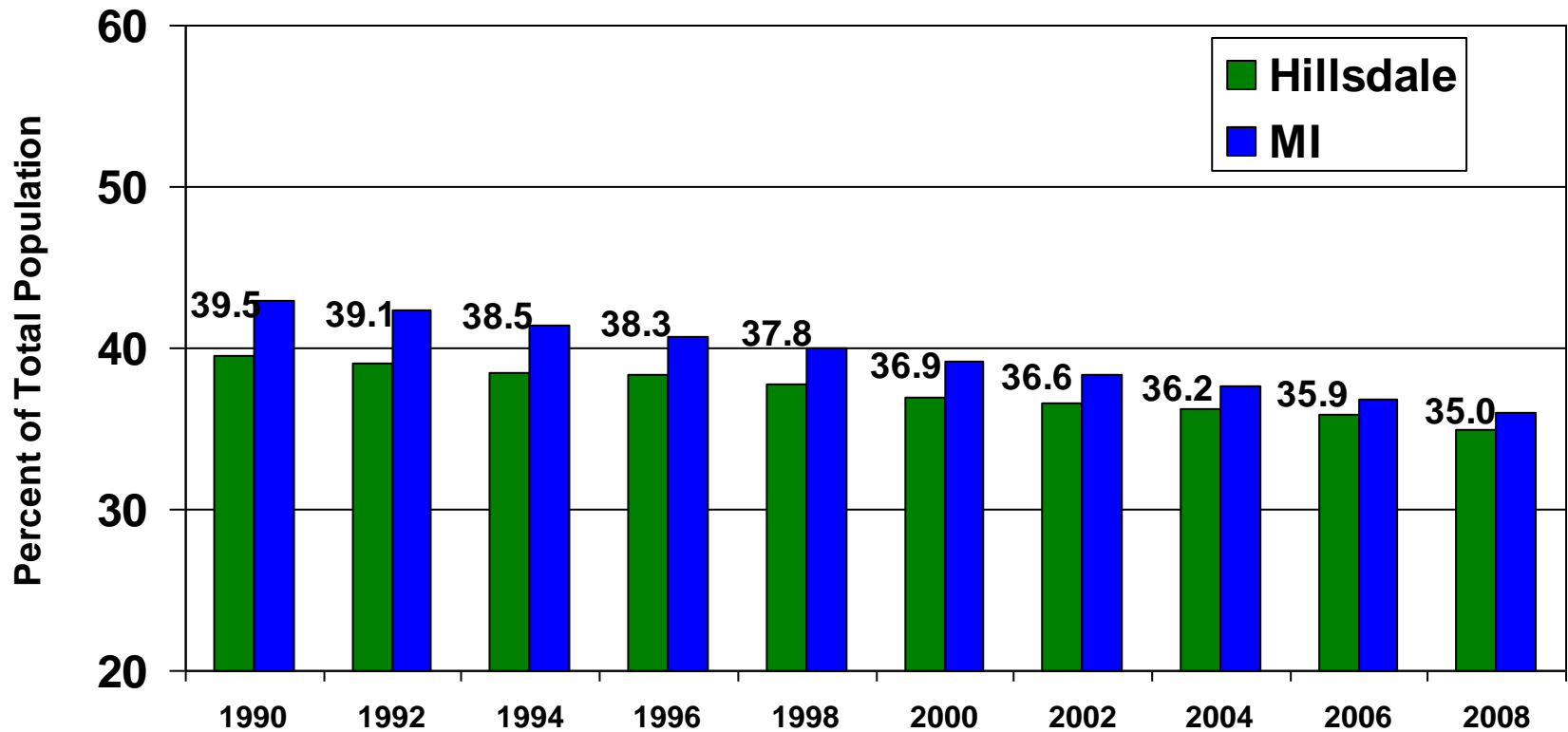


<http://www.mdch.state.mi.us/pha/osr/CHI/POP/PO07CO2.htm>

Population Trends 1990 to 2008

% of Population aged 18-44 years

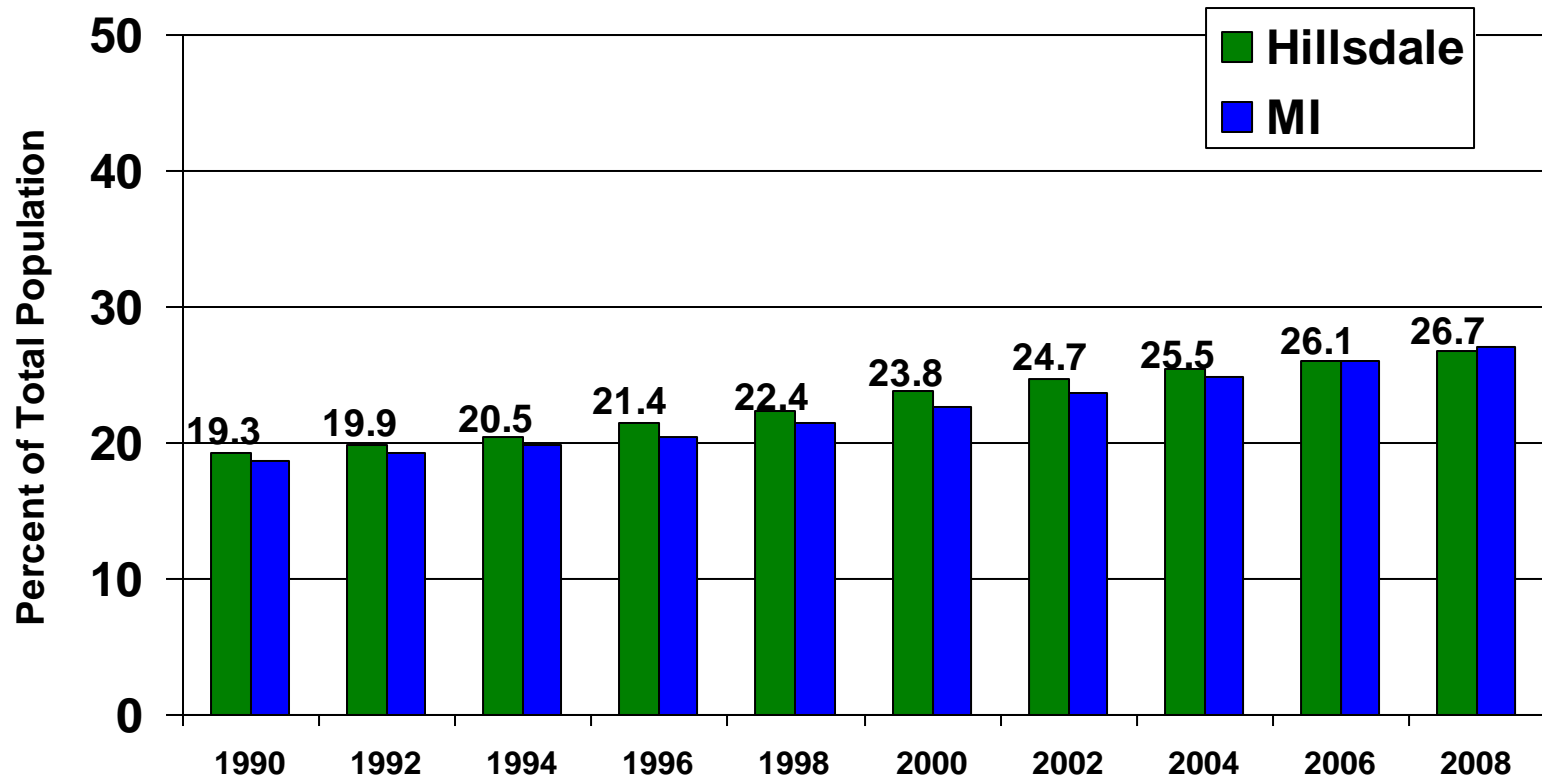
Source – Michigan Department of Community Health



Population Trends 1990 to 2008

% of Population aged 45-64 years

Source – Michigan Department of Community Health

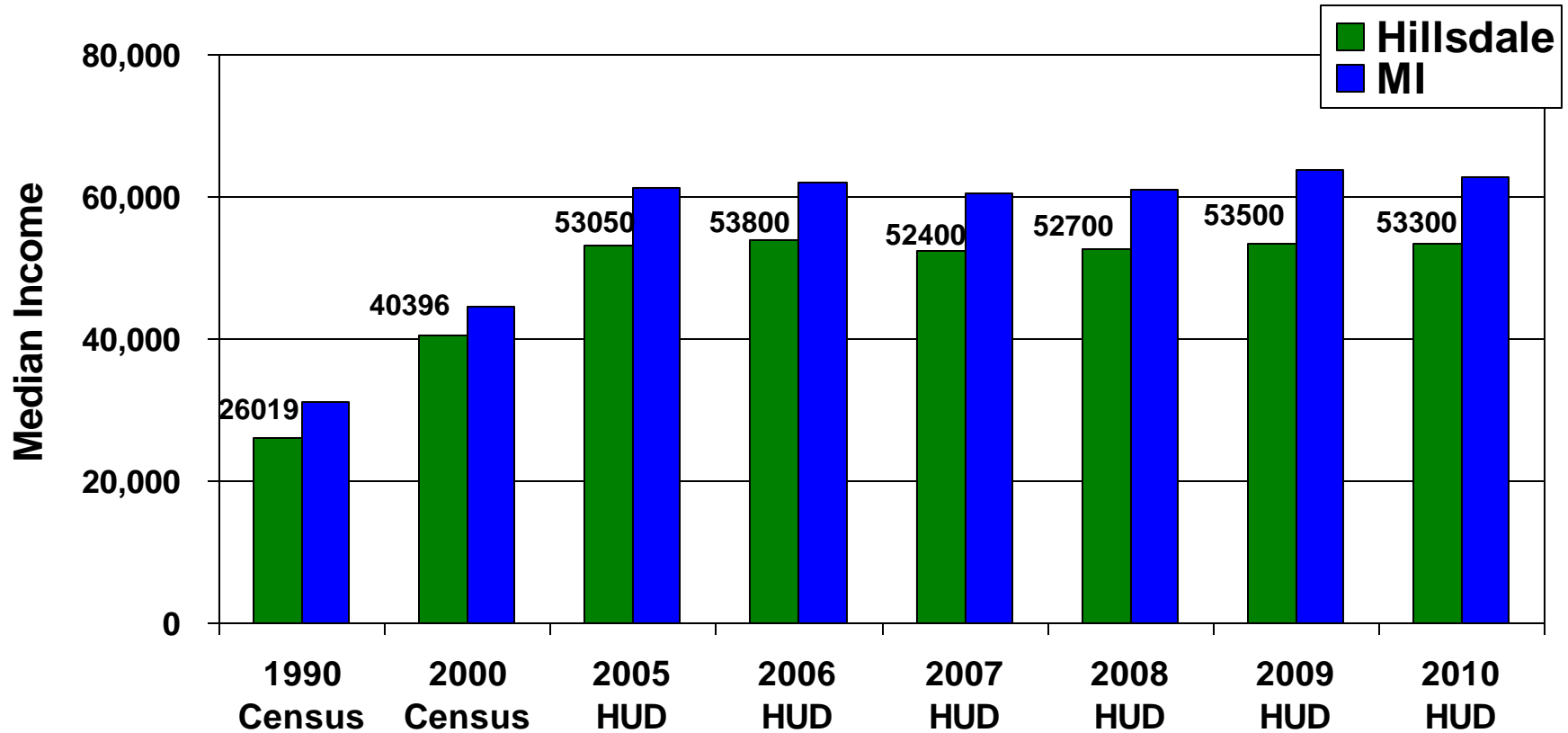


Economics and Housing



Median Family Income

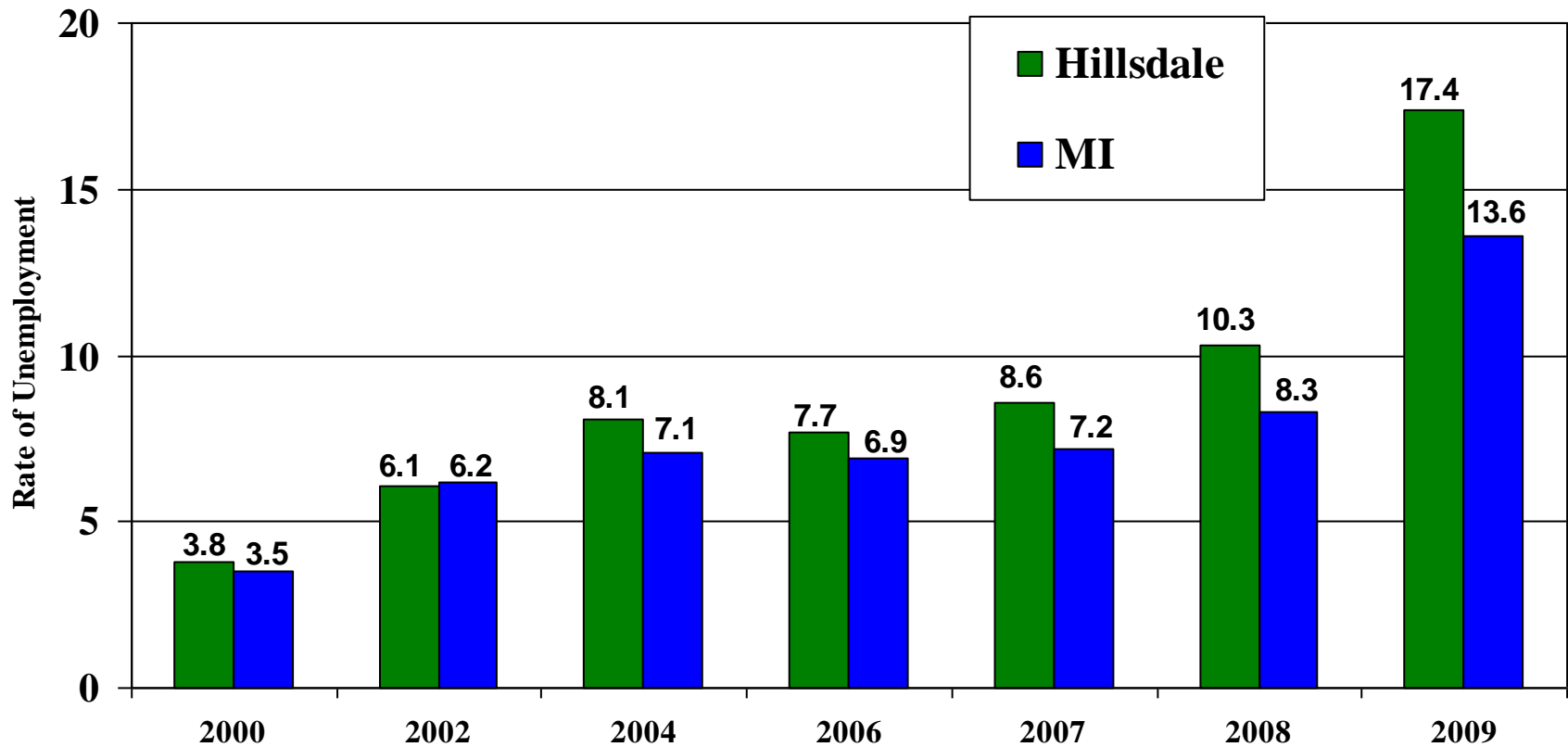
Source: US Census 1990/2000 and HUD Datasets



Unemployment rates

Average, non-seasonally adjusted
2000 - 2009

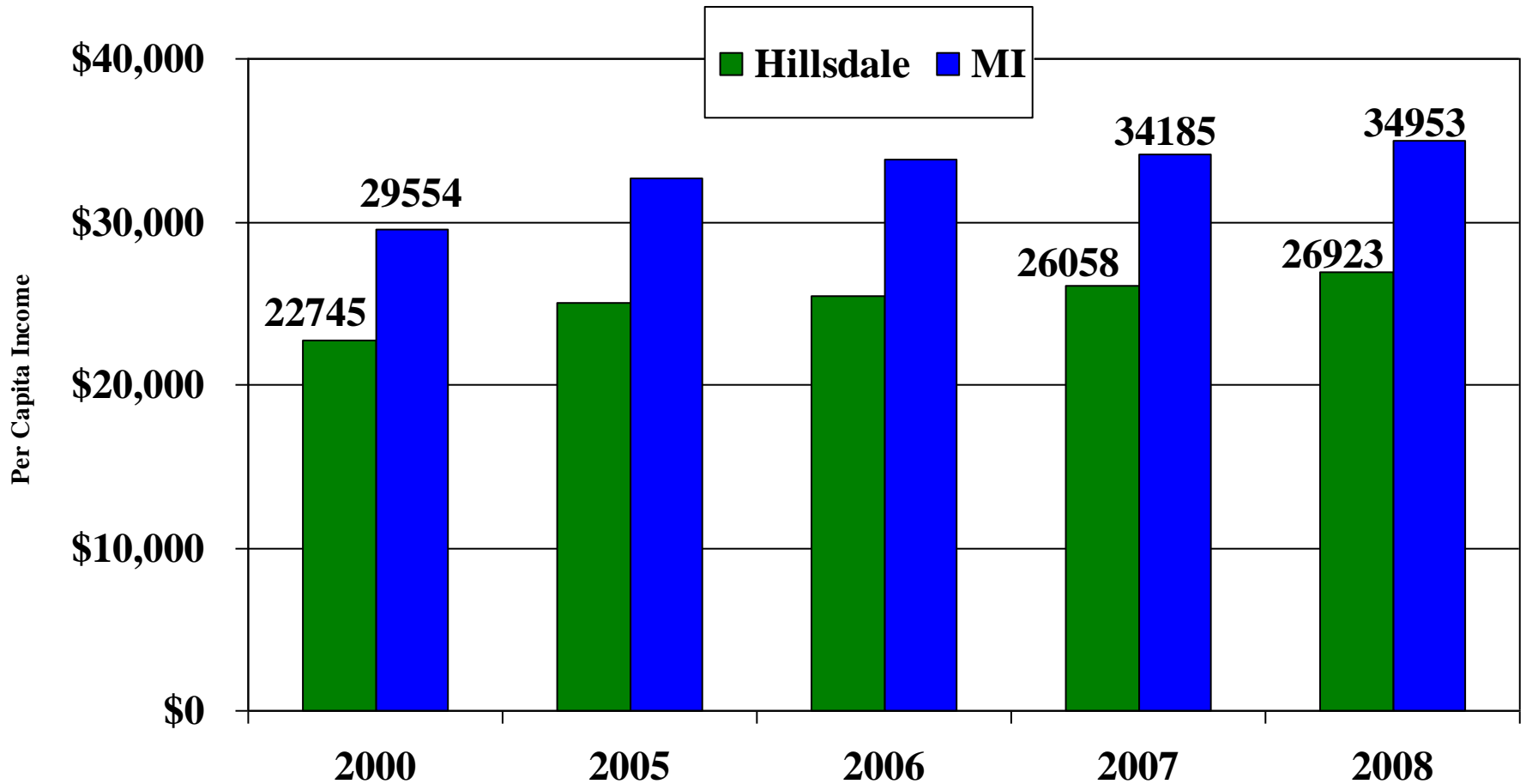
Source: U.S. Bureau of Labor Statistics



Per Capita Income Estimates

Hillsdale Co. and MI,

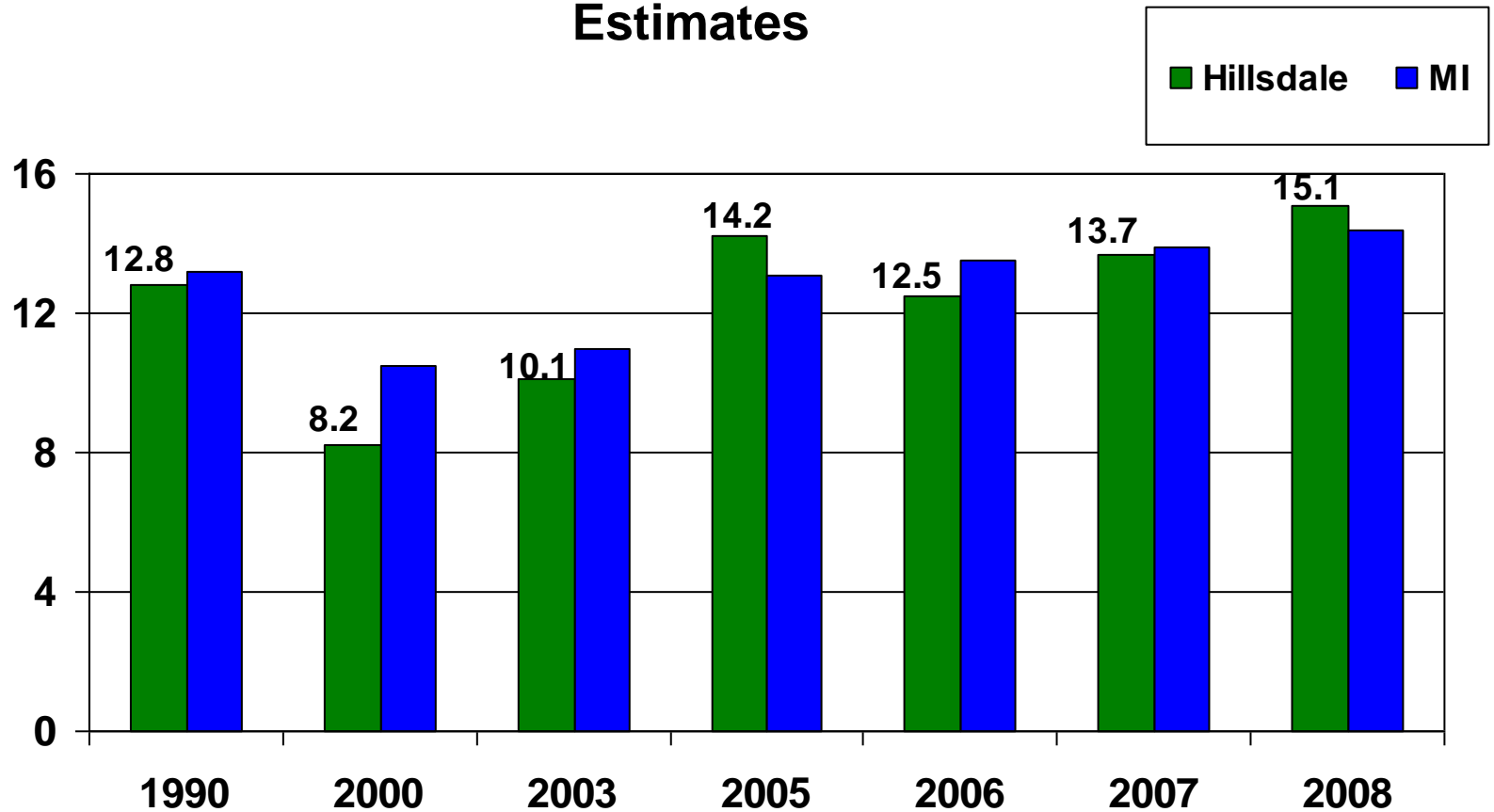
Source: U.S. Dept. of Commerce, Bureau of Economic Analysis



Poverty estimates - Percentage

Hillsdale Co. and MI - All ages

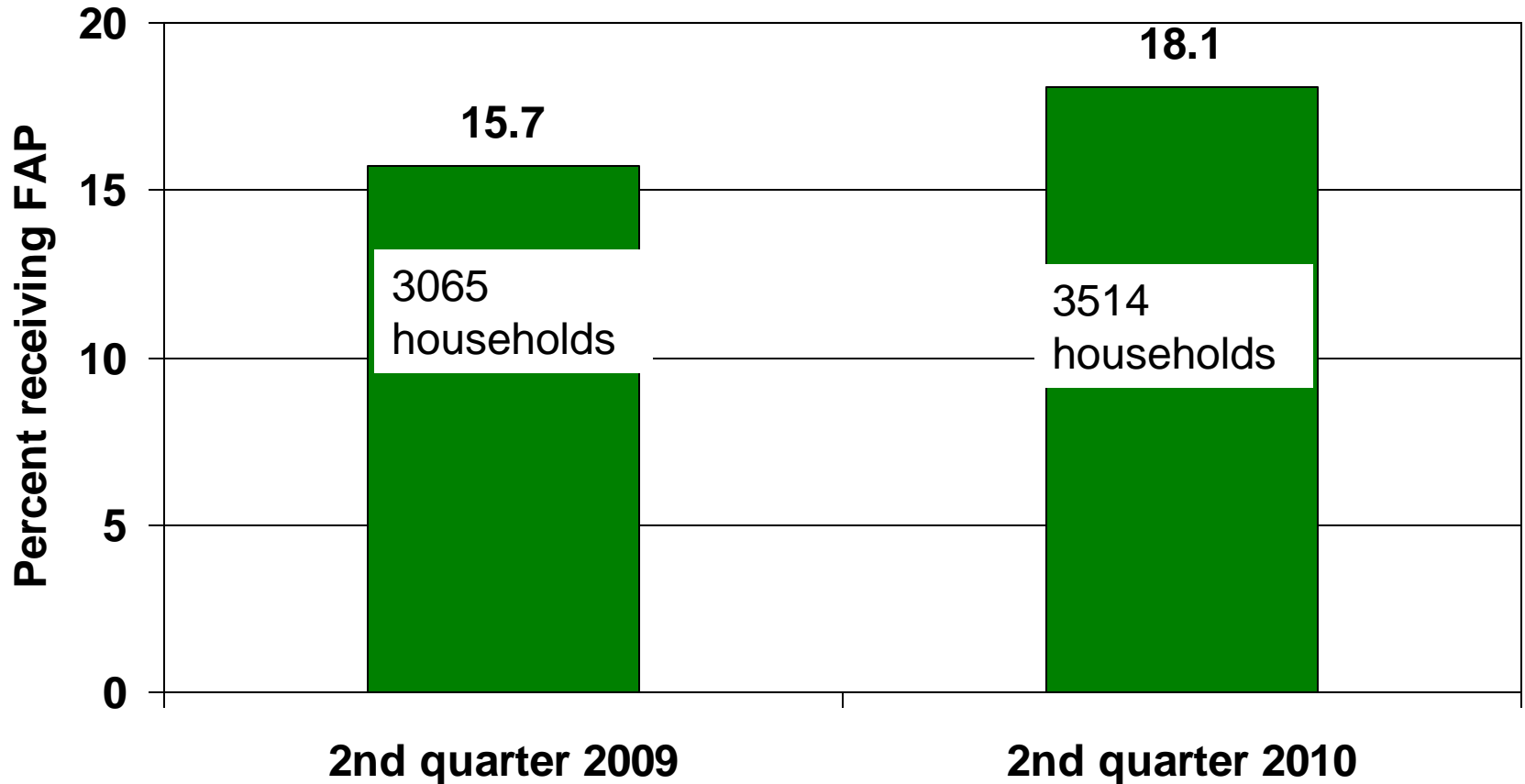
Source: U.S. Census – Small Area Income & Poverty
Estimates



Food Assistance Program – DHS

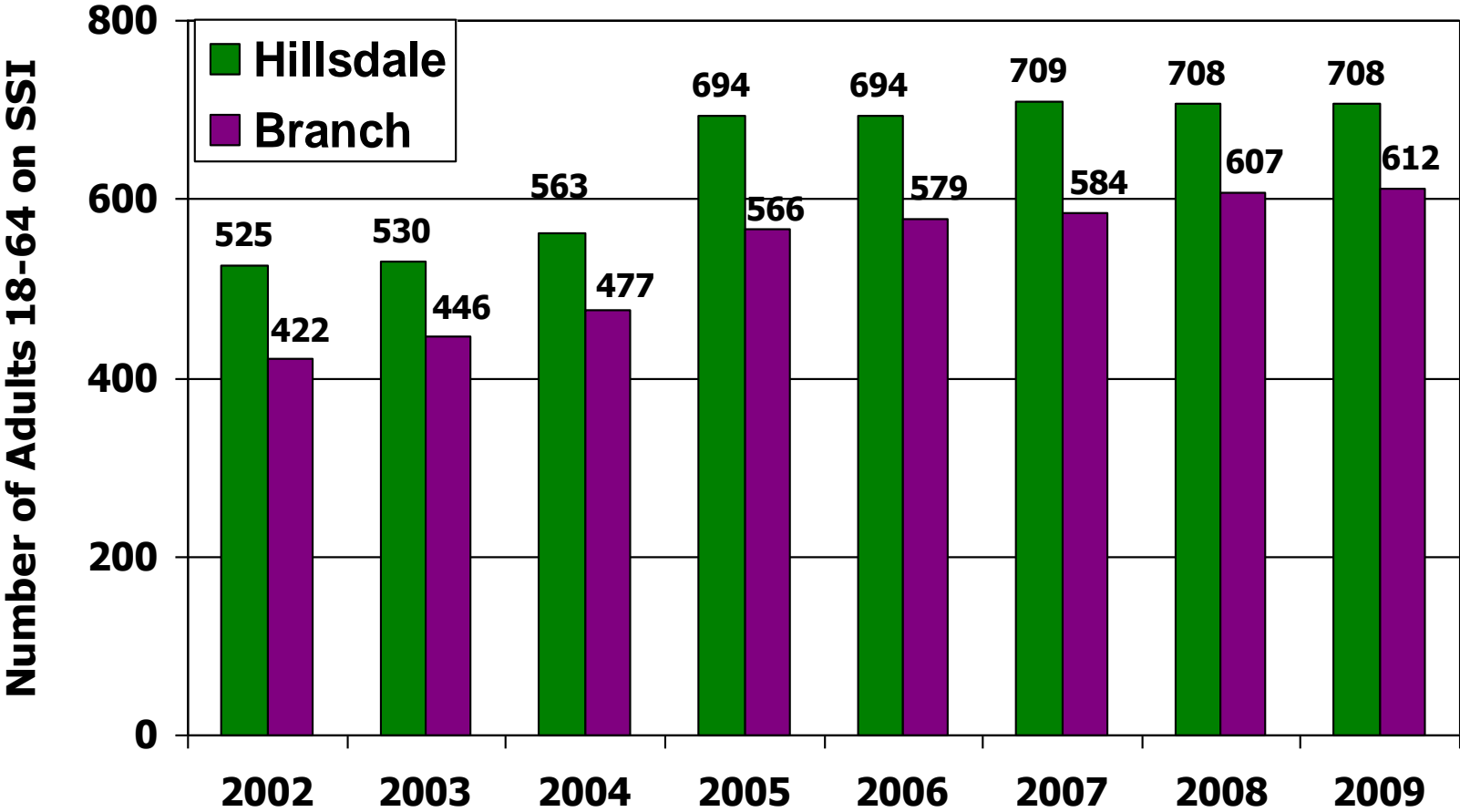
Percent of Population receiving assistance

Source: MI League of Human Services



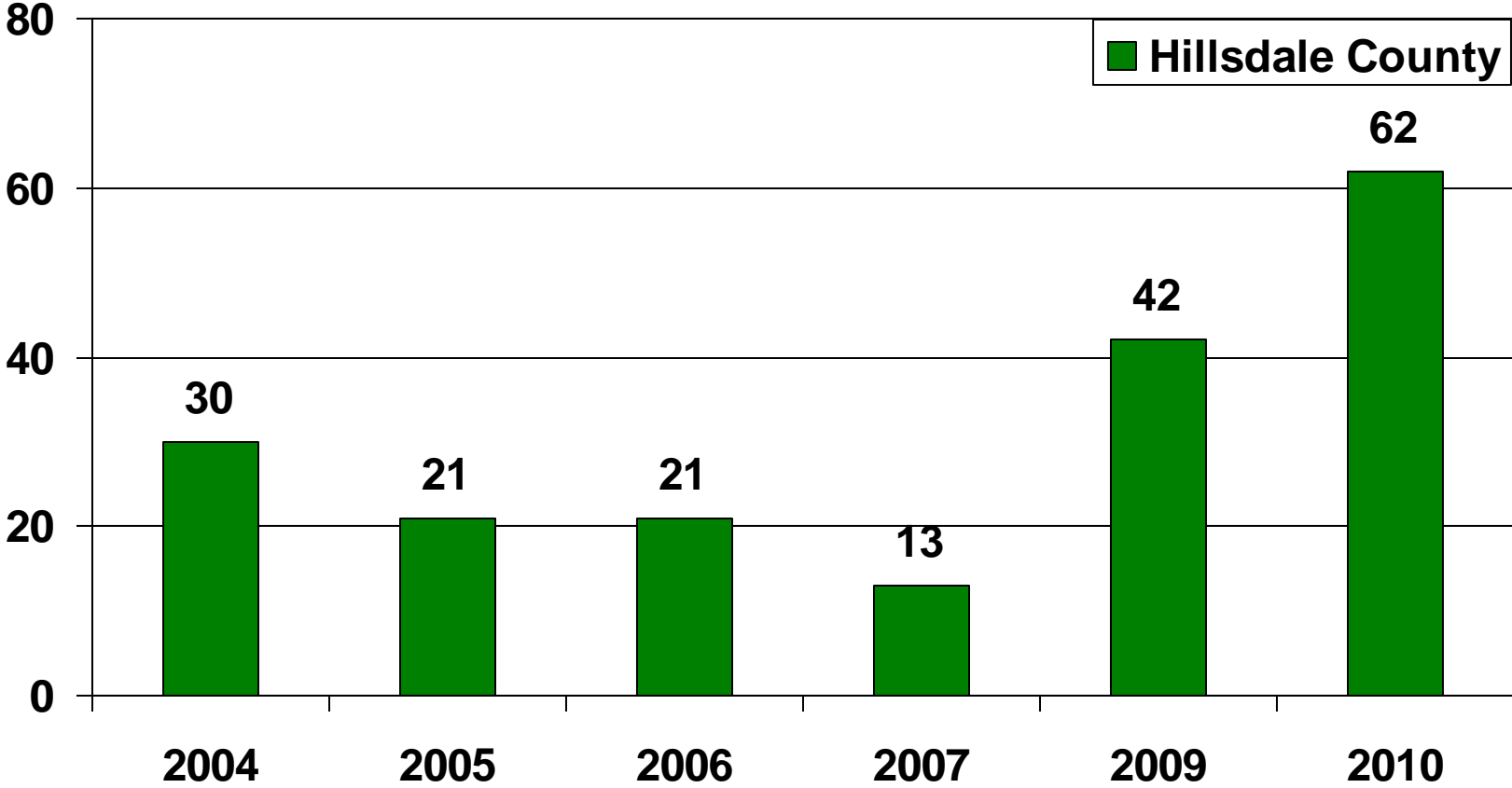
Number of Adults age 18-64 on SSI Hillsdale and Branch Counties

Source: Social Security website



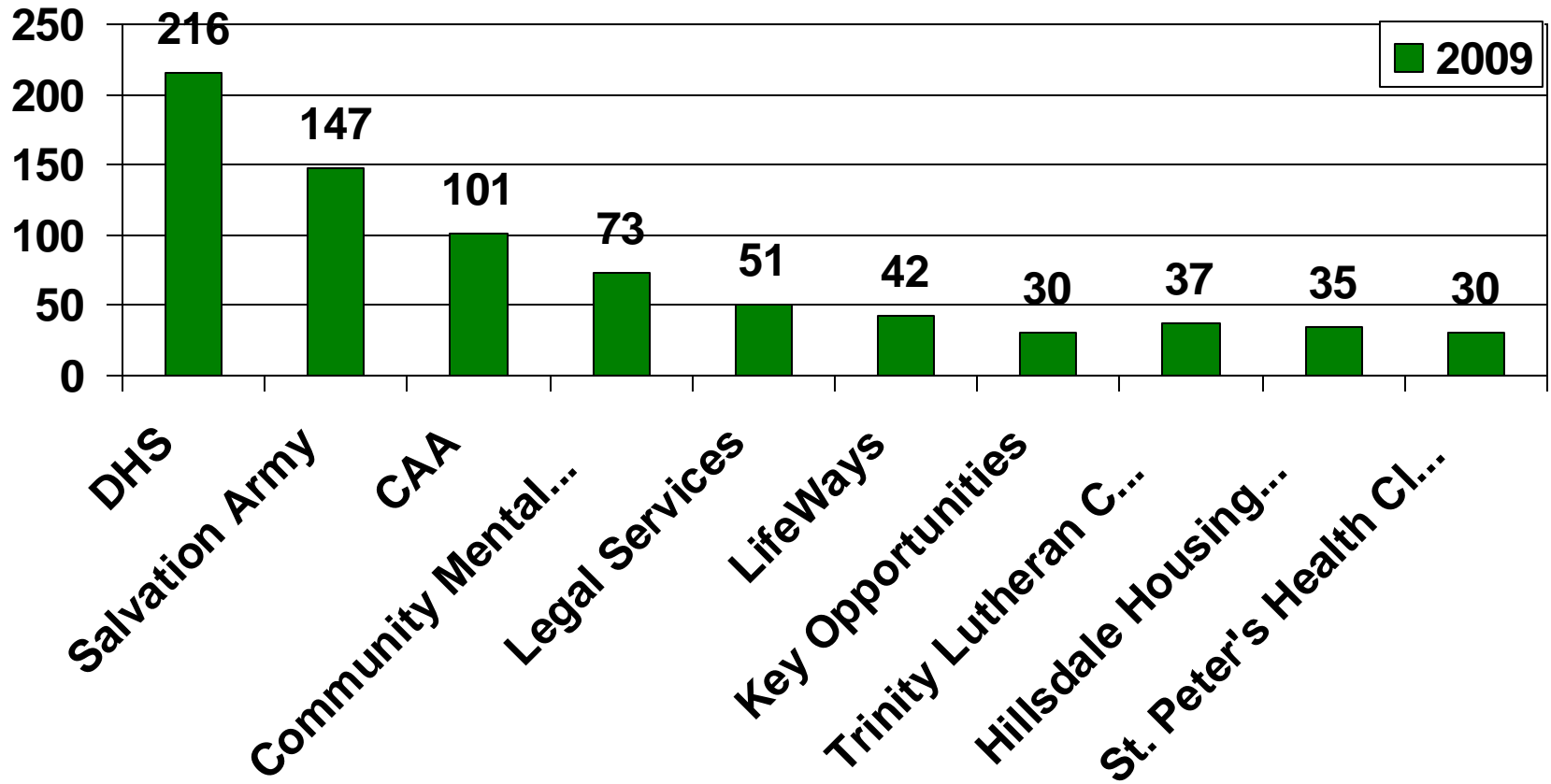
Homeless Point-in-Time (PIT) Count

Source: Community Action Agency



Hillsdale County 211

Call Volume by Referred Agency - 2009



Higher Education

Source: U.S. Census 2000

Bachelors Degree or Higher % of persons age 25+

- **Hillsdale Co.** **12.0**
- **Branch Co.** **10.6**
- Lenawee Co. 16.3
- Jackson Co. 16.3
- Calhoun Co. 16.0
- Kalamazoo Co. 31.2
- **Michigan** **21.8**

Healthy habits ??

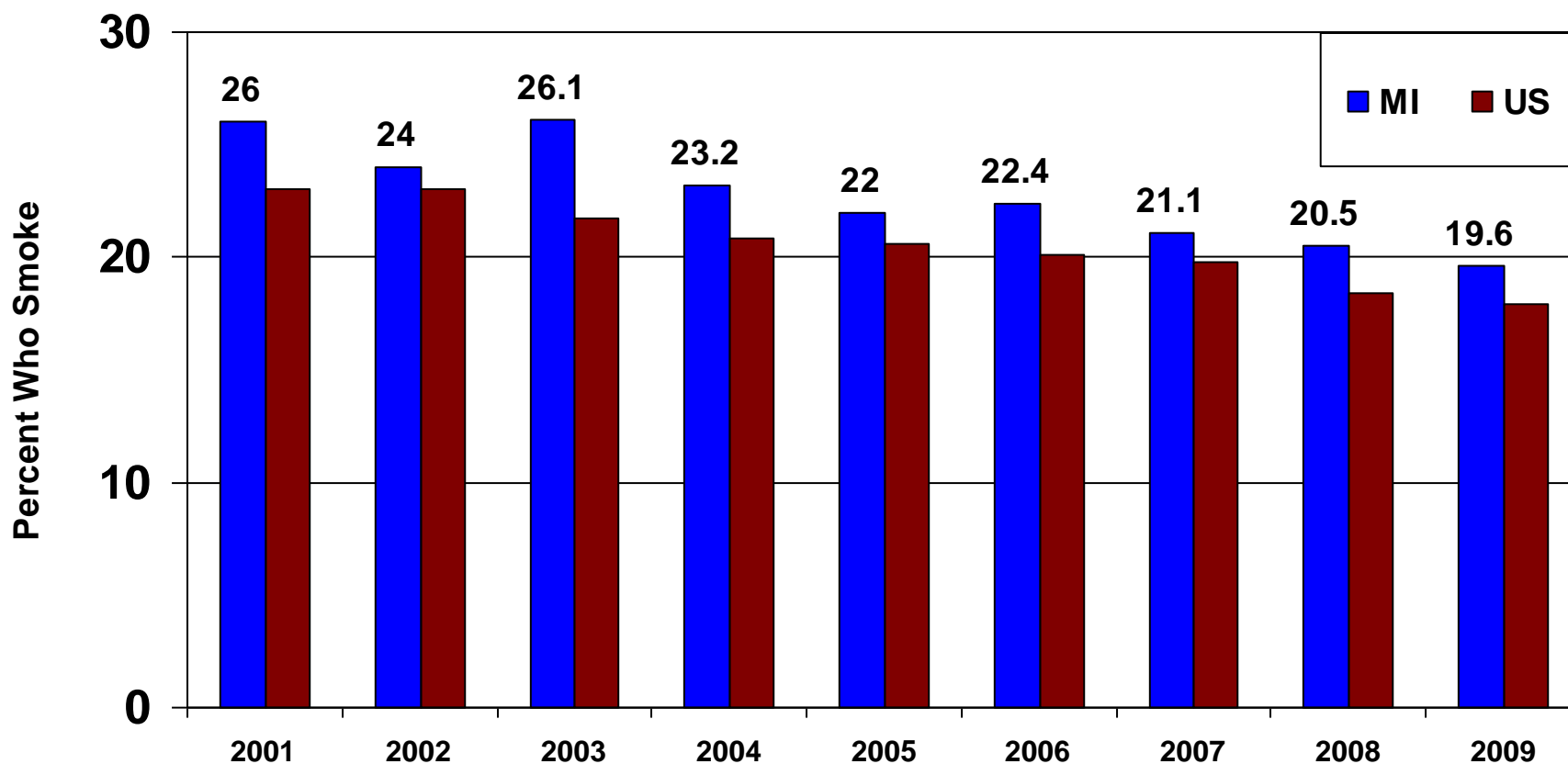


Current smokers - MI and US

(Smoke every day + smoke some days)

Source: Behavioral Risk Factor Surveillance System

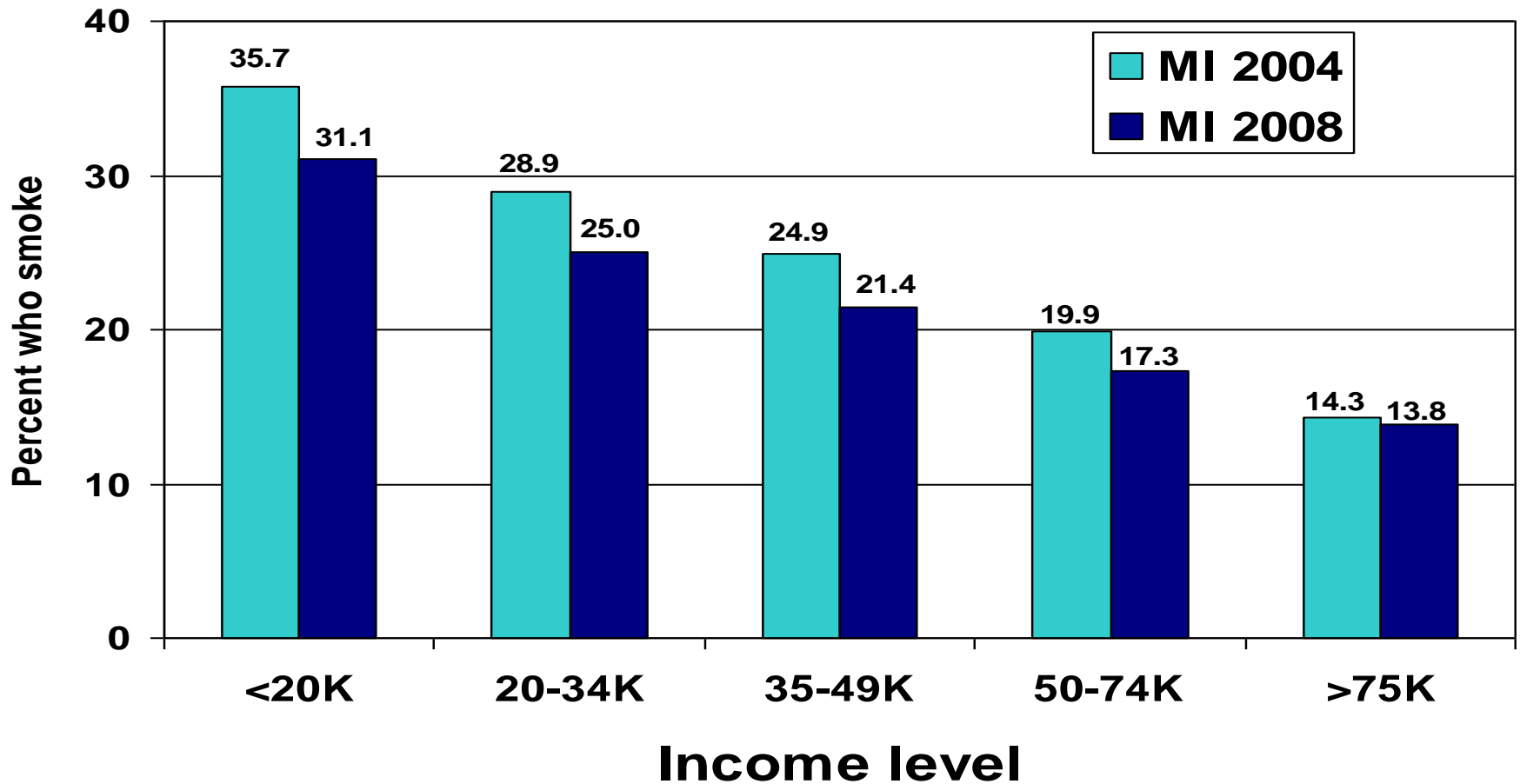
<http://apps.nccd.cdc.gov/BRFSS-SMART/SelQuickViewChart.asp>



Smoking vs. Income Level

Michigan 2004, 2008

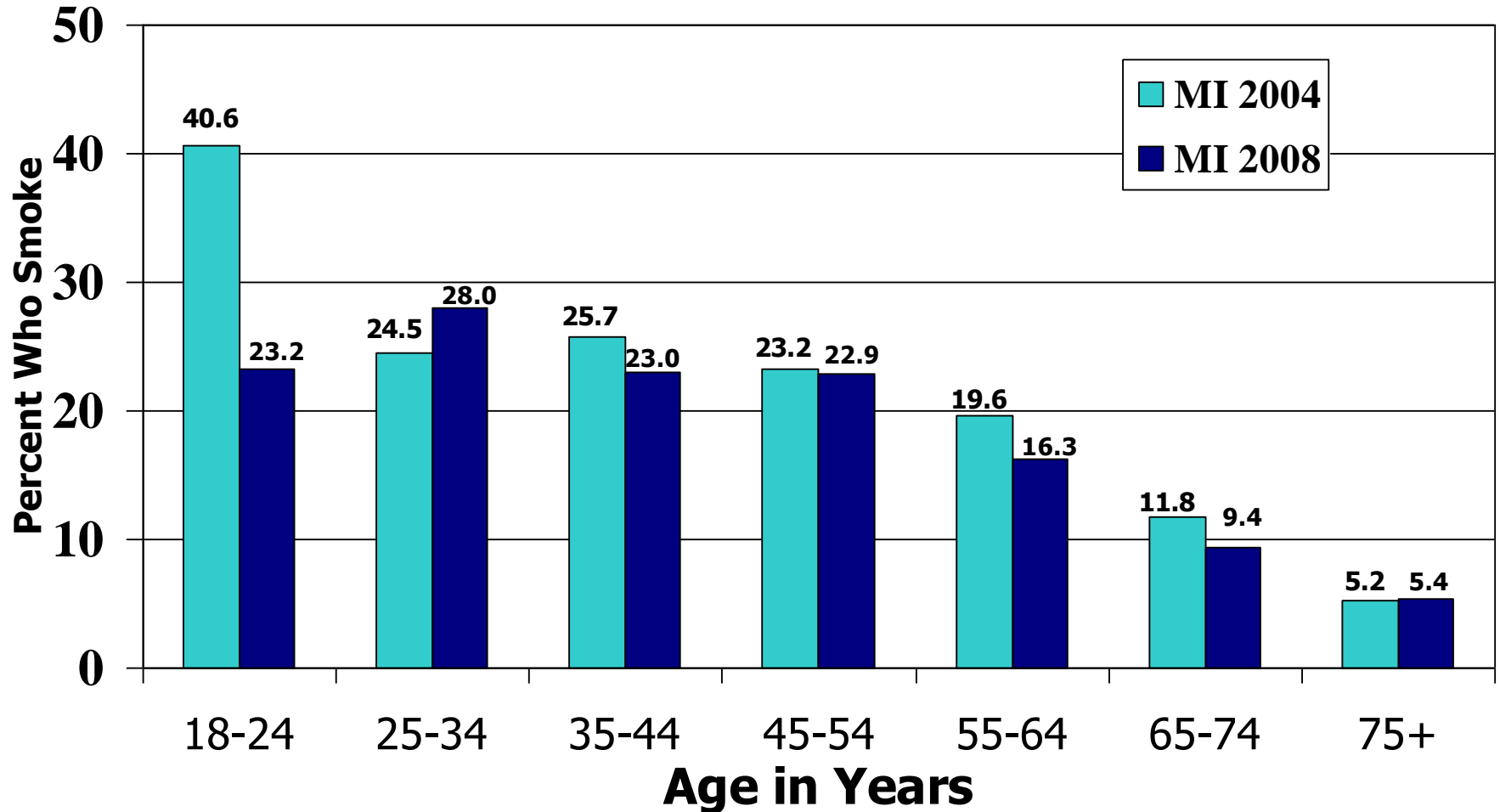
Source: Behavioral Risk Factor Surveillance System
2004 vs. 2008



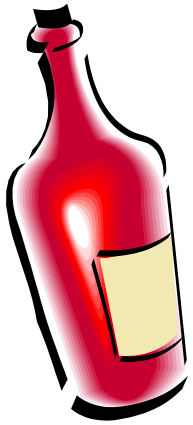
Smoking Trends by Age – MI

Smoke Every Day

Source: Behavioral Risk Factor Survey
2004 and 2008

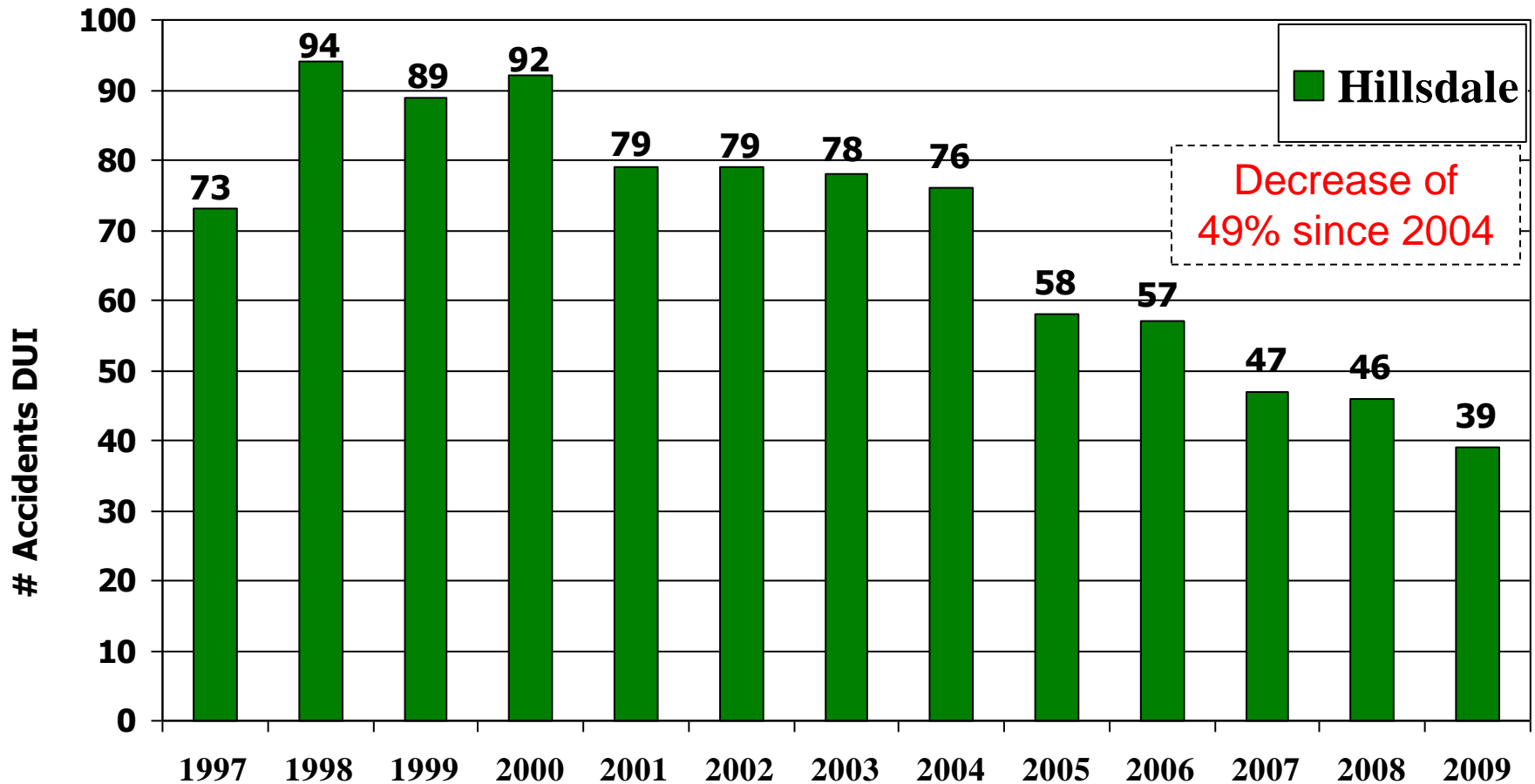


Alcohol and Drugs



Motor Vehicle Accidents Driving when Impaired Hillsdale County 1997-2009

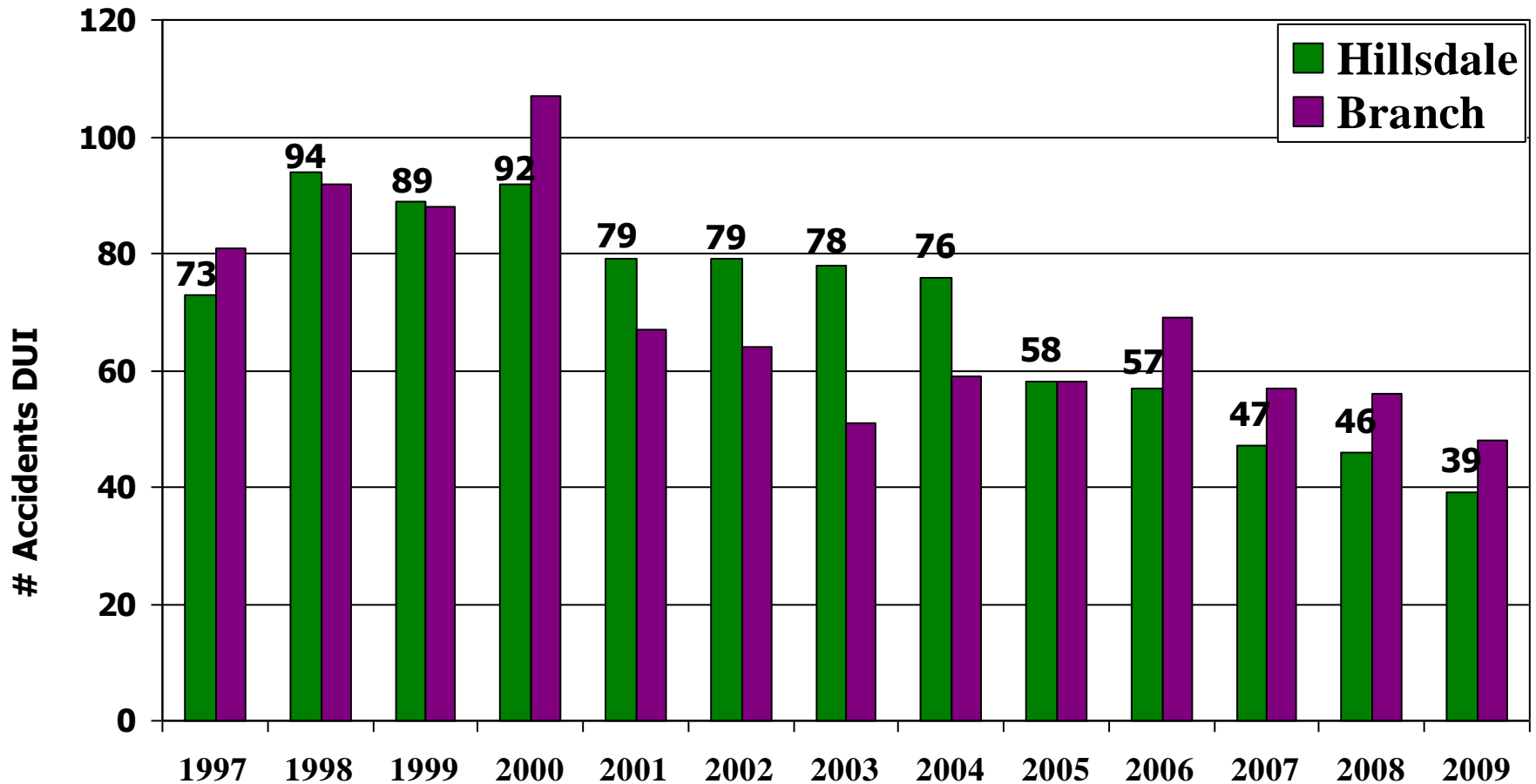
Source: Michigan Traffic Crash Facts



Motor Vehicle Accidents Driving when Impaired

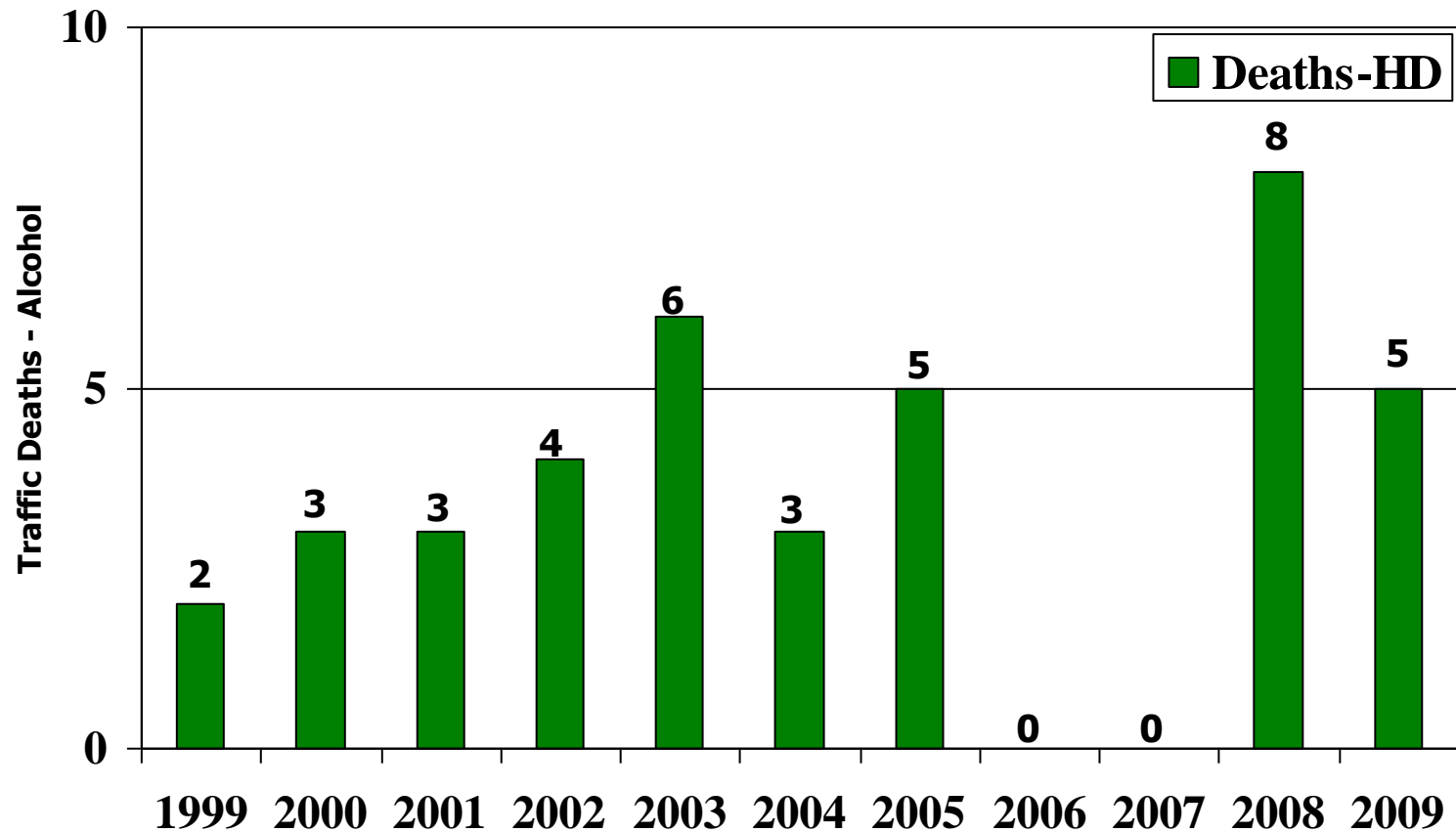
Hillsdale, Branch Counties 1997-2009

Source: Michigan Traffic Crash Facts



Number Killed in Motor Vehicle Accidents with Alcohol Involved Hillsdale County 1999-2009

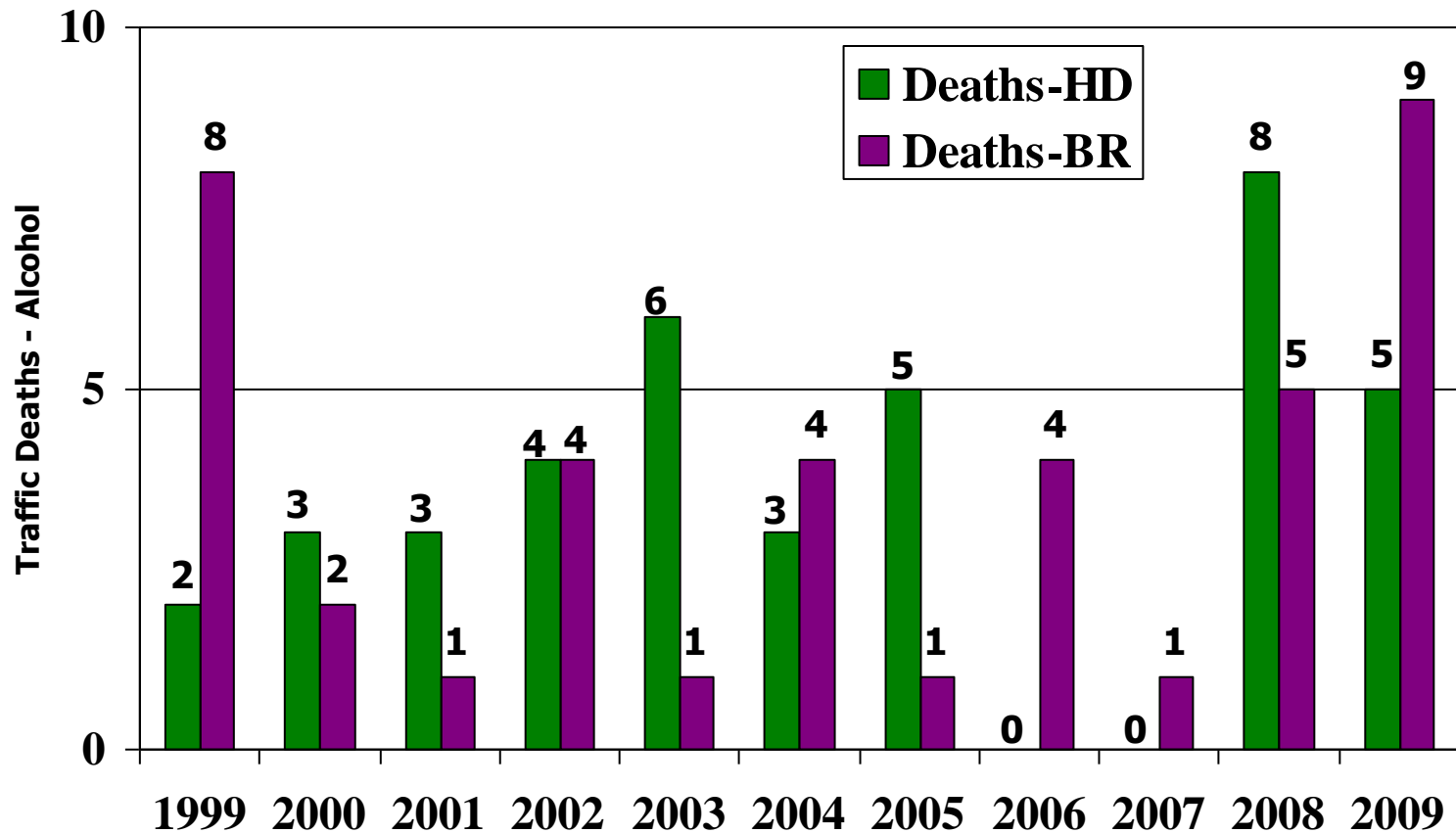
Source: Michigan State Police Traffic Crash Facts



Number Killed in Motor Vehicle Accidents with Alcohol Involved

Hillsdale, Branch Counties 1999-2009

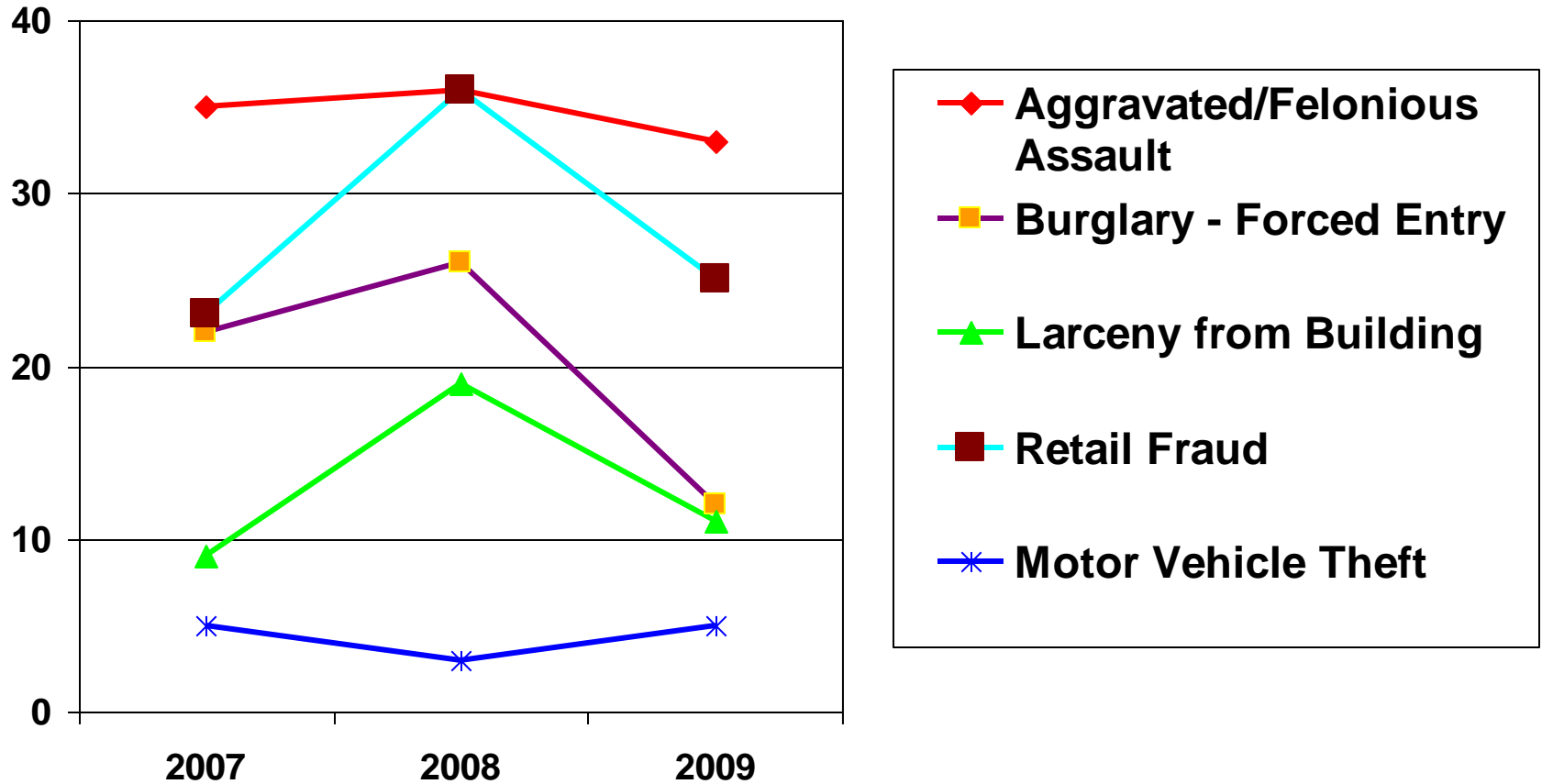
Source: Michigan State Police Traffic Crash Facts



Crime

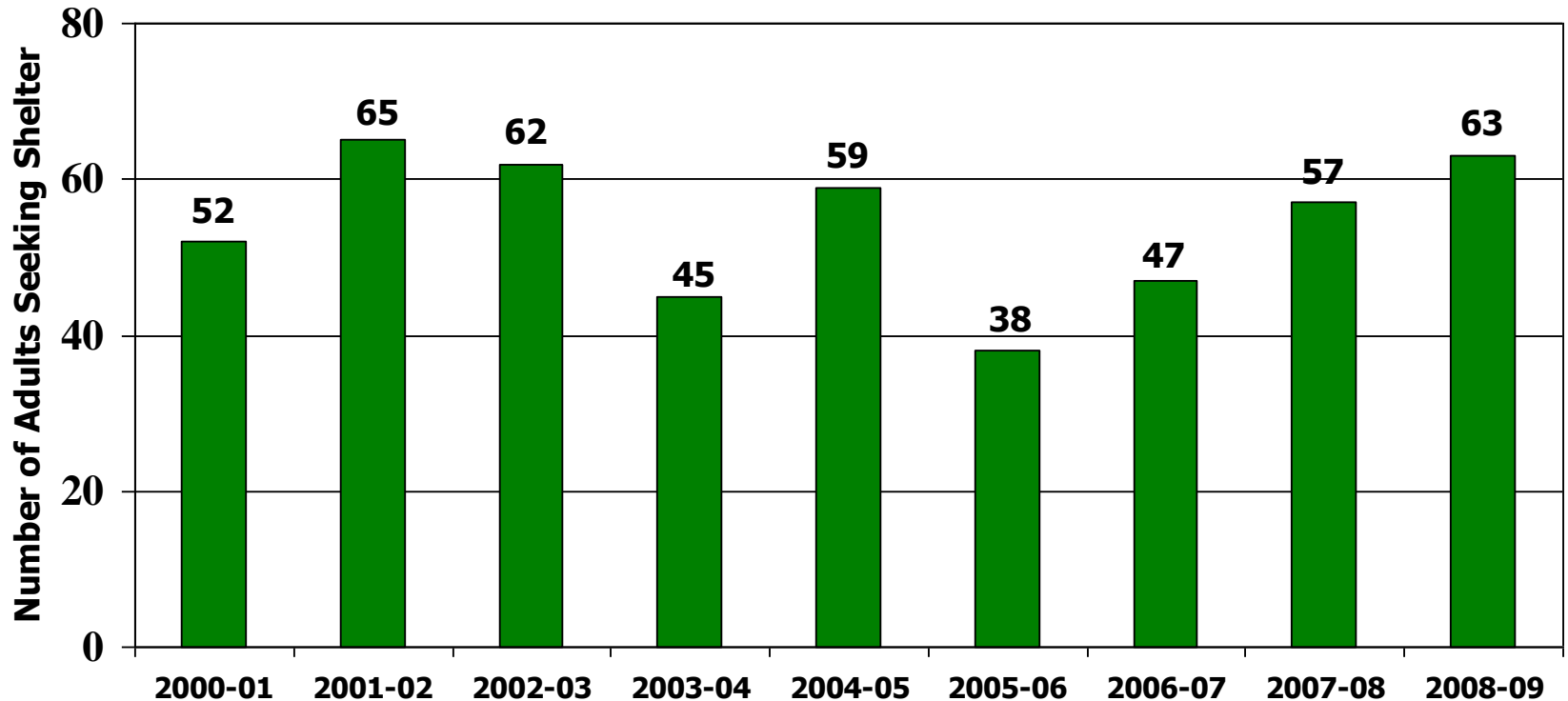


All Arrests Reported Hillsdale County 2007-2009



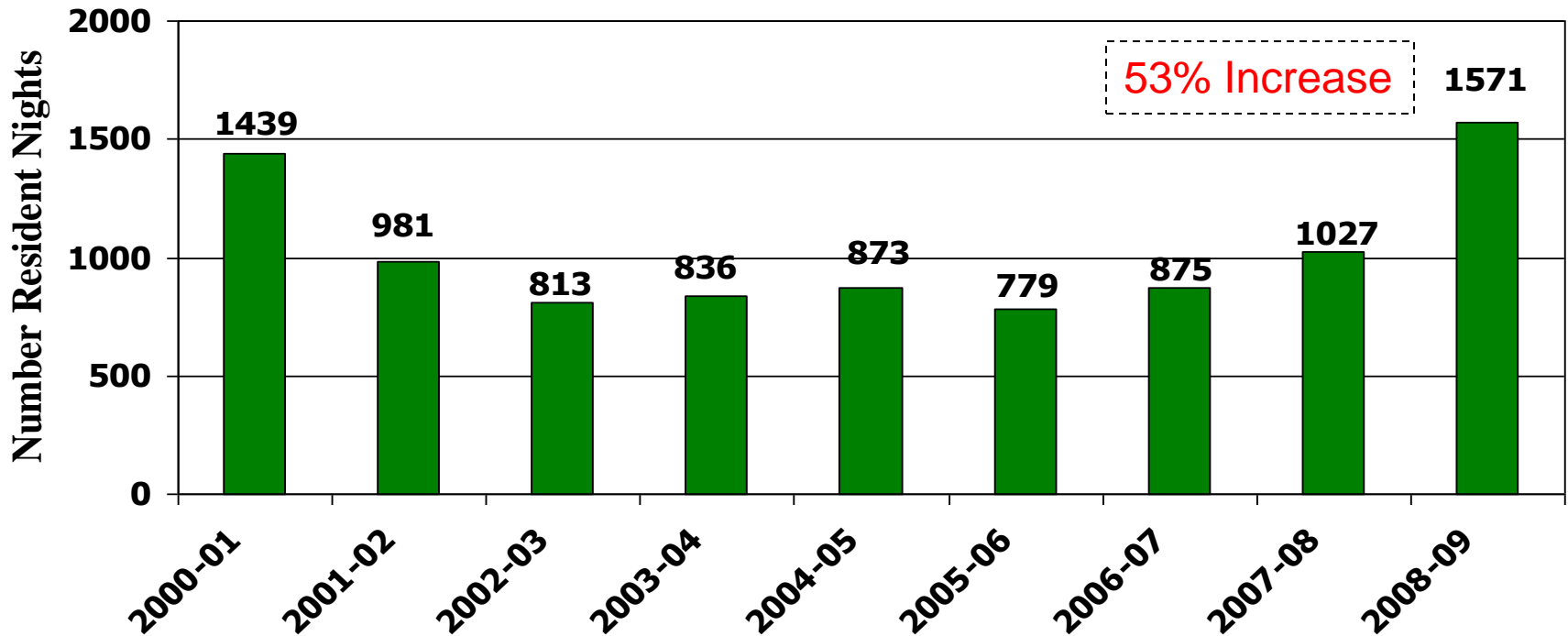
Number of Adults in Hillsdale seeking shelter for domestic violence 2001-2009

Source: Domestic Harmony

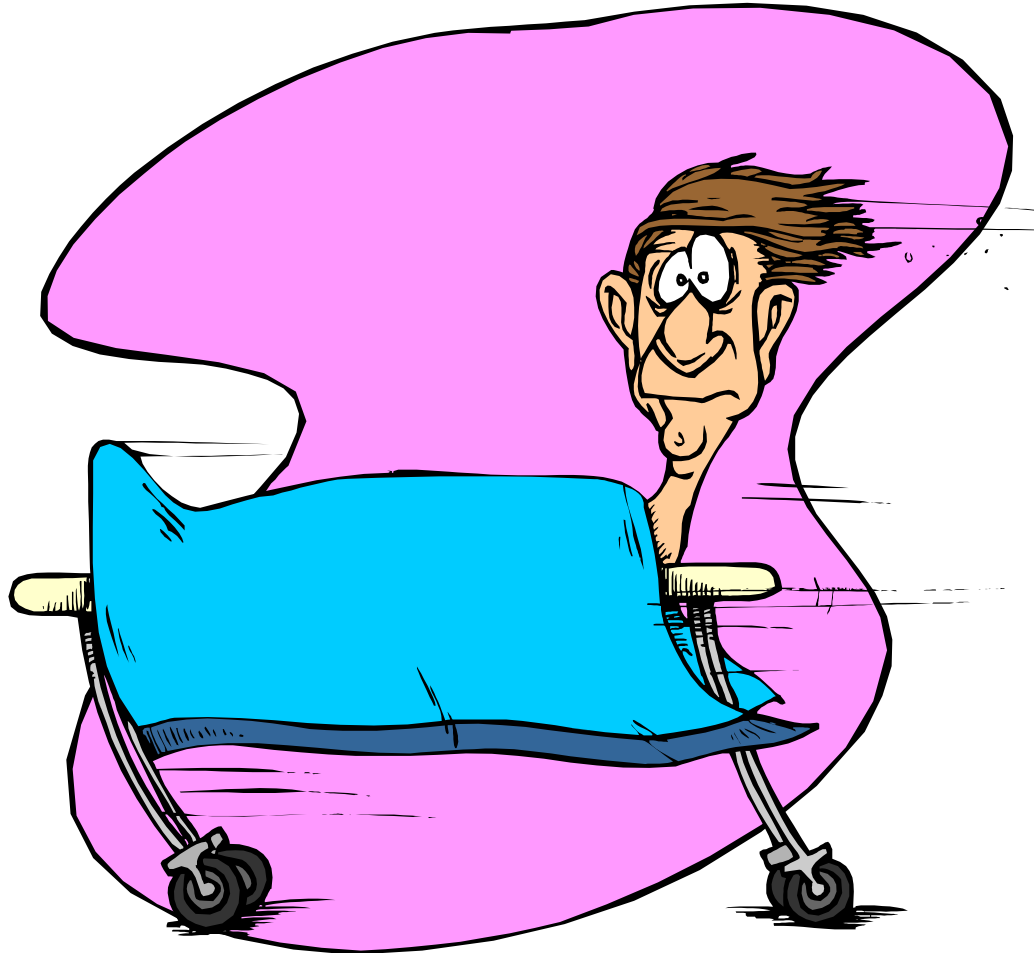


Number of Adult Resident Nights provided by Domestic Violence Shelter 2001-2009

Source: Domestic Harmony



Hospitalization and Mortality



Hospitalization Conditions

Hillsdale and State of MI

Avg. Annual Rate/10,000 in 2003-2008

Ages 18-44

<u>Condition</u>	<u>Hillsdale</u> Rate/10,000	<u>St. of MI</u> Rate/10,000
Females with Deliveries	309.5	321.8
Injury and Poisoning	60.0	65.1
Heart Disease	26.6	26.1
Pneumonia	11.9	9.8
Chest Pain	8.7	10.8
Cancer (Malignant Neoplasms)	8.1	9.6

Hospitalization Conditions

Hillsdale and State of MI

Avg. Annual Rate/10,000 in 2003-2008

Ages 45-64

<u>Condition</u>	<u>Hillsdale – Rate/10,000</u>	<u>St. of MI – Rate /10,000</u>
Heart Diseases	268.4 33% higher than MI	202.0
Injury and Poisoning	108.2	96.9
Psychoses	43.4	65.6
Cancer (Malignant Neoplasms)	63.1	66.4
Osteoarthritis and Allied Disorders	66.5 41% higher than MI	47.1
Pneumonia	41.1	34.9
Cerebrovascular Diseases	39.9	36.2
Chest Pain	30.4	41.2

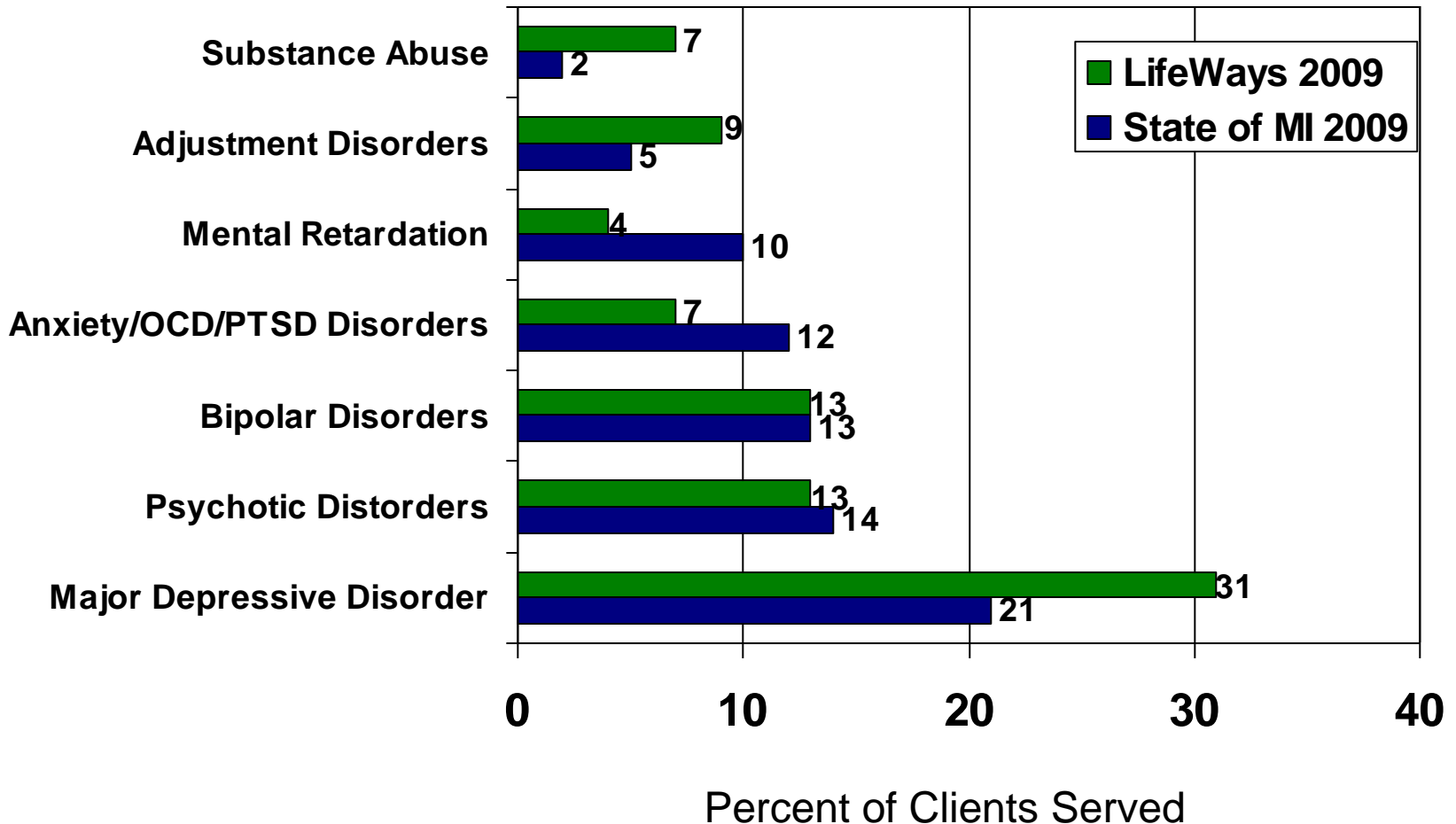
Death Rates/100,000 for Ten Leading Causes

Hillsdale v. MI 2008

<u>Cause of Death</u>	<u>Hillsdale Co.</u>	<u>State of MI</u>
Heart Disease	238.0	243.6
Cancer	183.9	201.5
Chronic Lower Respiratory Diseases	56.3	51.6
Stroke	54.1	46.5
Unintentional Injuries	36.8	36.8
Diabetes Mellitus	19.5	27.5
Alzheimer's Disease	32.5	27.3
Pneumonia/Influenza	30.3	18.7
Kidney Disease	17.3	16.6
Suicide	15.1	11.7

Mental Health in Hillsdale County

Treatment Diagnosis for Adults Served by LifeWays, MI



Health is the greatest gift,
contentment the greatest wealth,
faithfulness the best relationship.

Buddha

(Hindu Prince Gautama Siddharta,
the founder of Buddhism, 563-483 B.C.)