

HSN Indicators Report



Seniors
October, 2010

Thoughts on Aging

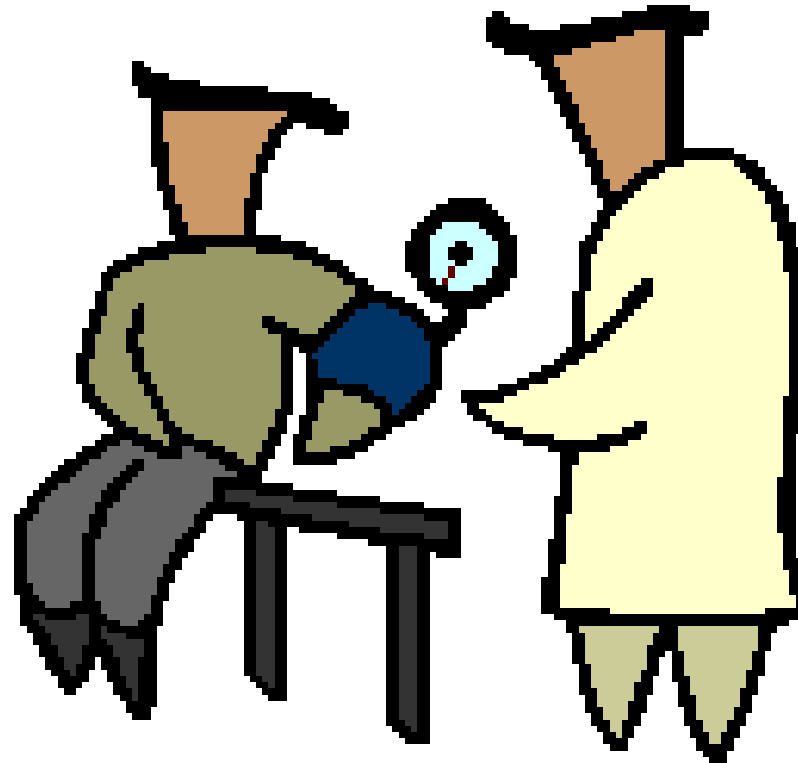
You know you're getting old when you stoop to tie your shoelaces and wonder what else you could do while you're down there.

-- George Burns

The aging process has you firmly in its grasp if you never get the urge to throw a snowball.

--Doug Larson

Health



Preventable Hospitalizations 2008: Hillsdale Co., Michigan Residents Age 65+ Rate per 10,000

Source: MDCH Hospitalization files

<u>Cause</u>	<u>HD Rate</u>	<u>MI Rate</u>
Heart Diseases	850.4*	703.0
Injury and Poisoning	293.3	318.1
Pneumonia	189.0	183.1
Cancer (Malignant Neoplasms)	143.8	162.4
Cerebrovascular Diseases	142.4	191.7
Osteoarthritis	139.6	154.8
Diabetes	28.2	37.1

Leading Causes of Death

All Ages

Rate per 100,000
Hillsdale County, State of MI 2008

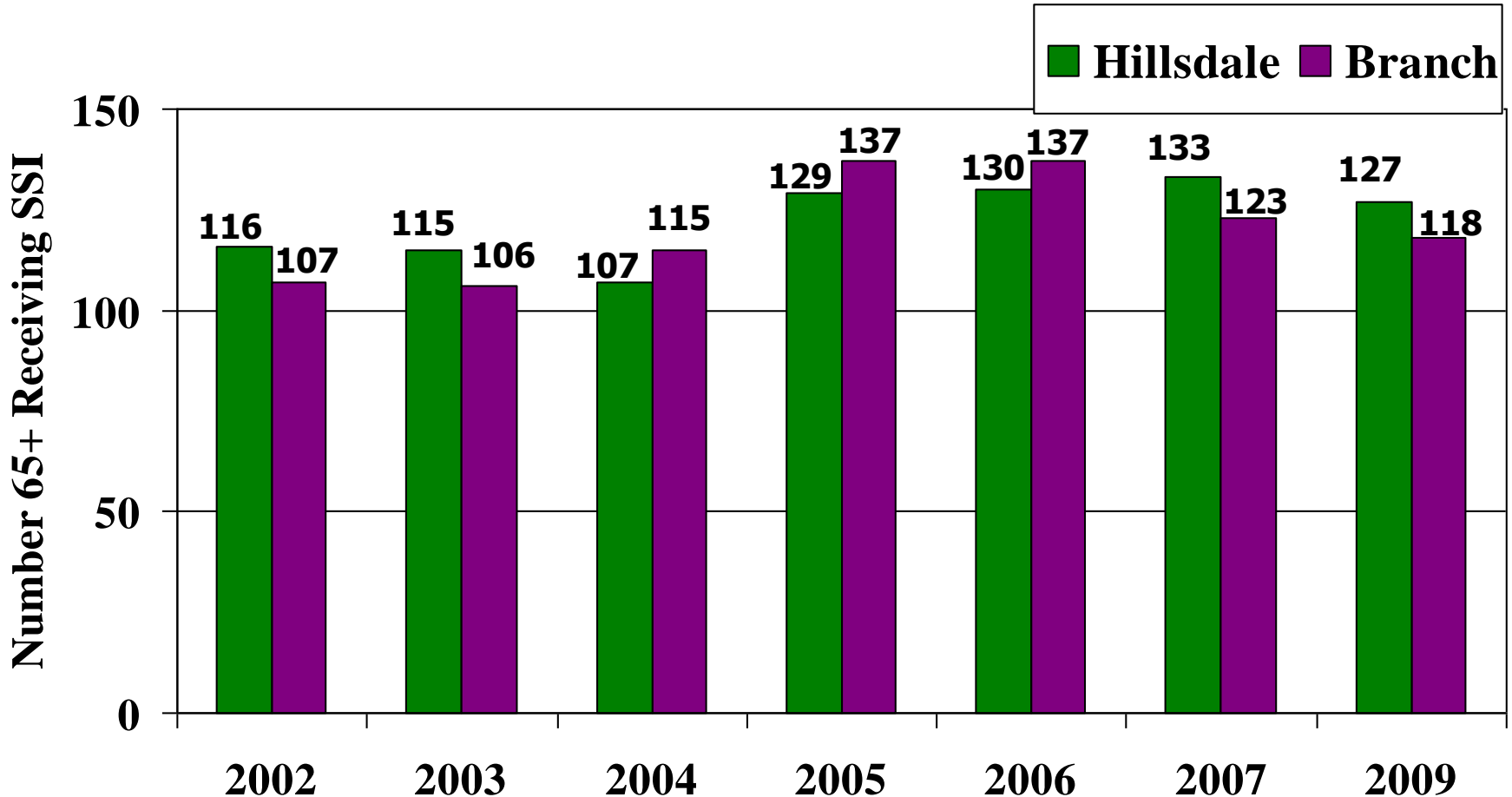
<u>Cause of Death</u>	<u>Hillsdale Co.</u>	<u>State of MI</u>
Heart Disease	193.3	220.5
Cancer	154.6	185.4
Chronic Lower Respiratory Diseases	45.1	48.0
Stroke	43.1	42.3

Economics



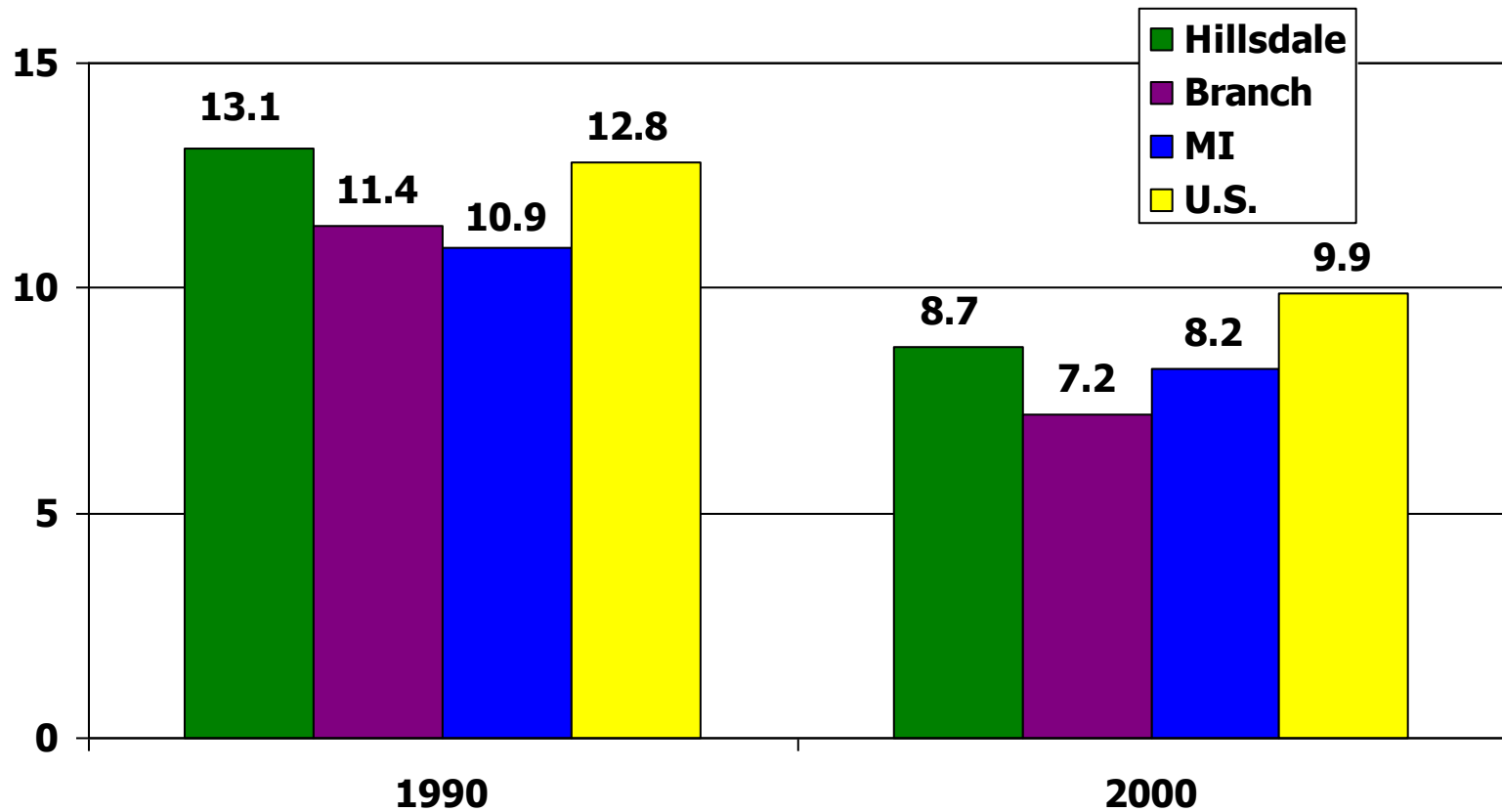
Seniors receiving SSI- age group 65+ Hillsdale and Branch Counties

Source: US Social Security Administration



Percentage of Hillsdale seniors, age 65+, in poverty

Source: 1990, 2000 U.S. Census

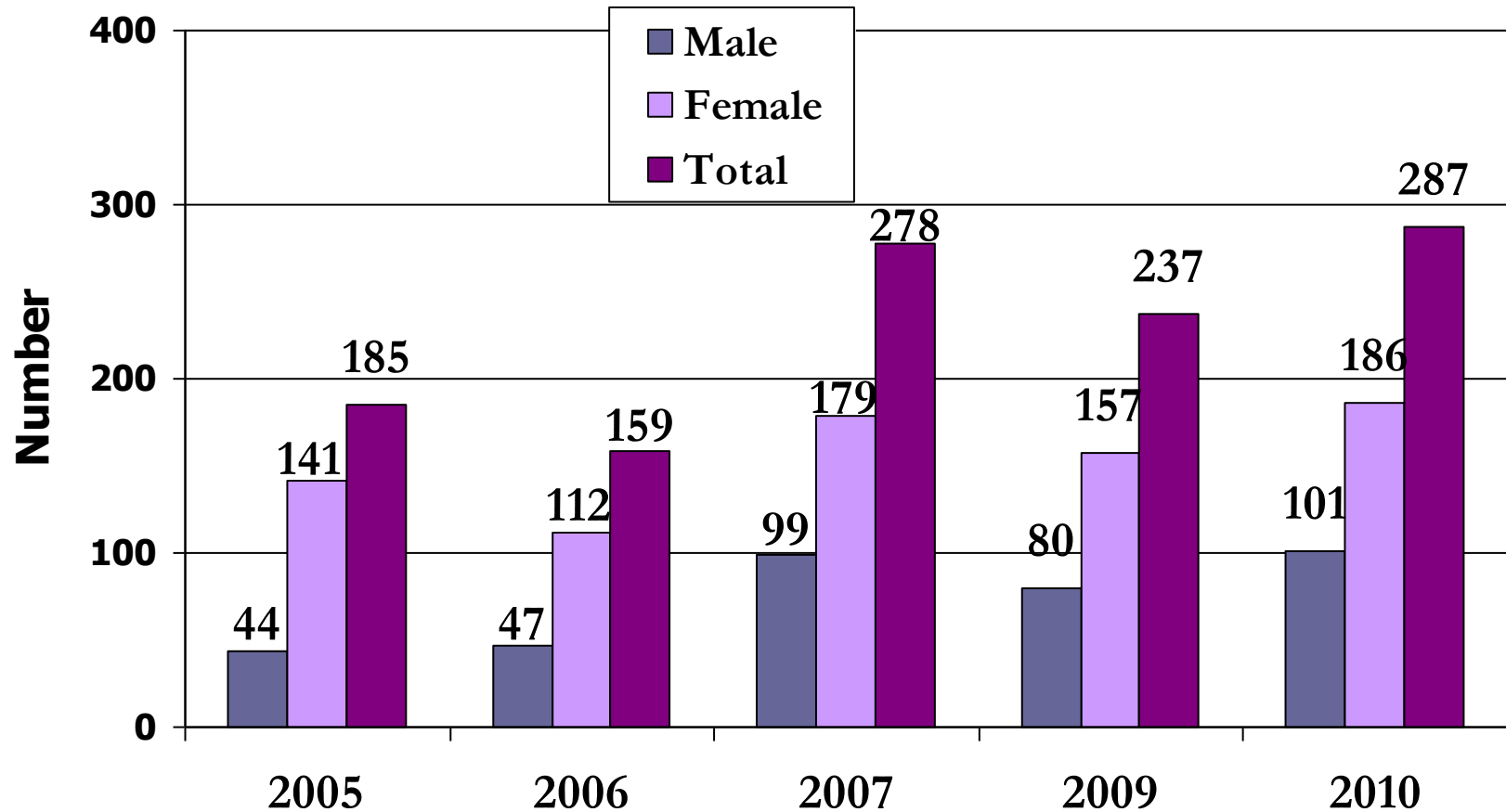


Hillsdale County Senior Survey Results



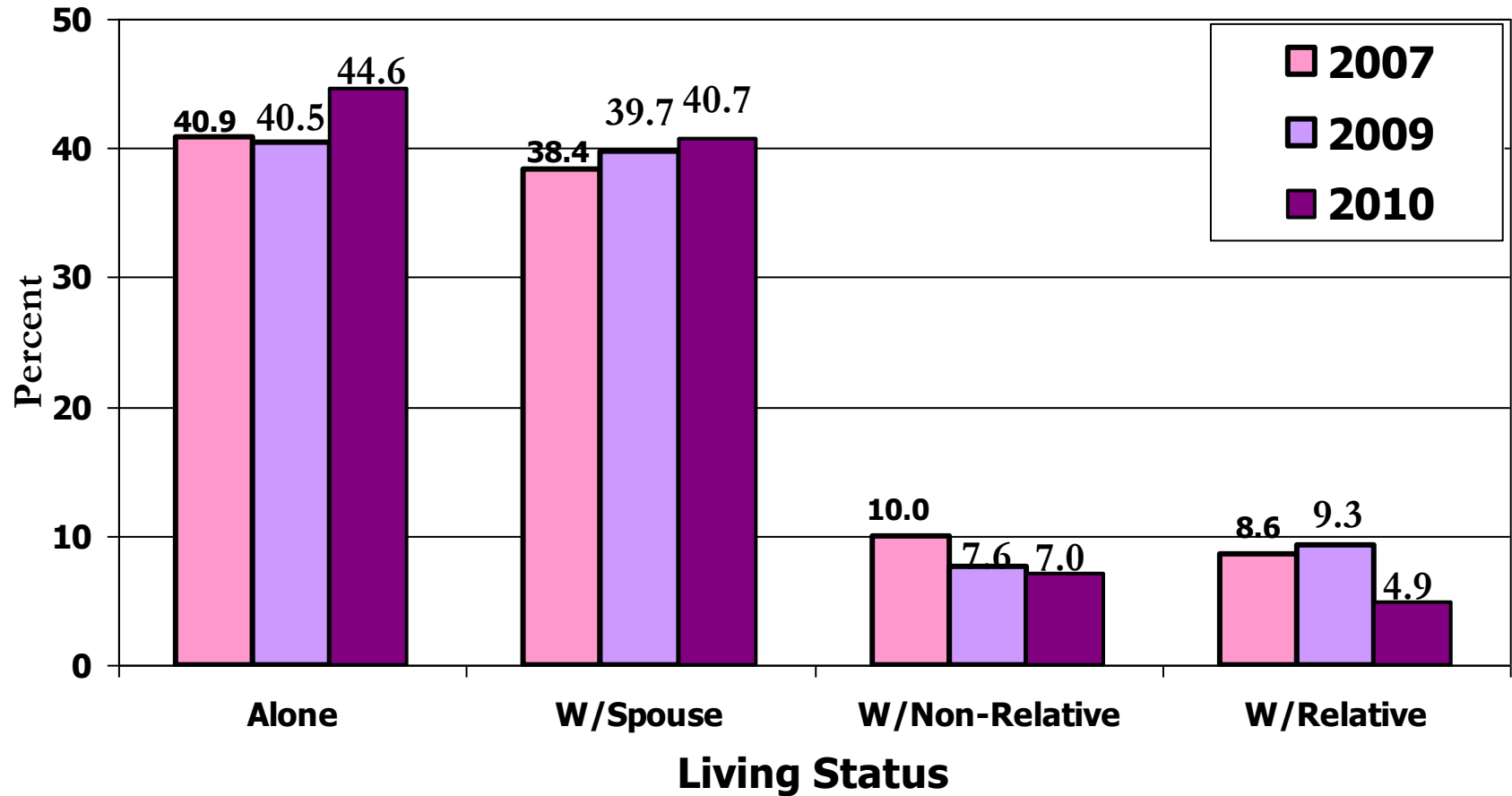
Total Surveyed – 2005 - 2010

Source: Hillsdale County Senior Center Survey



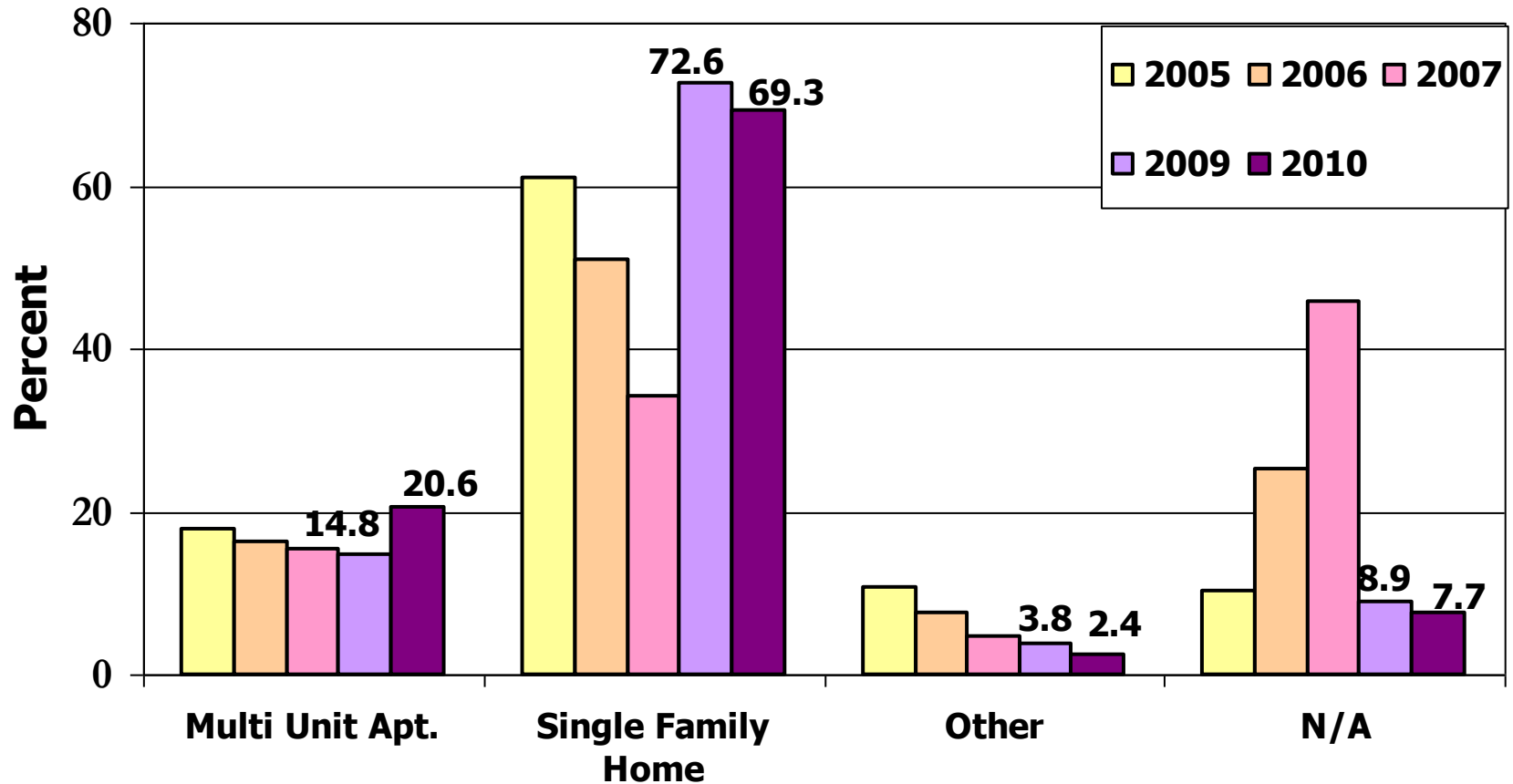
Living Status

Source: Hillsdale County Senior Center Survey



Housing Type

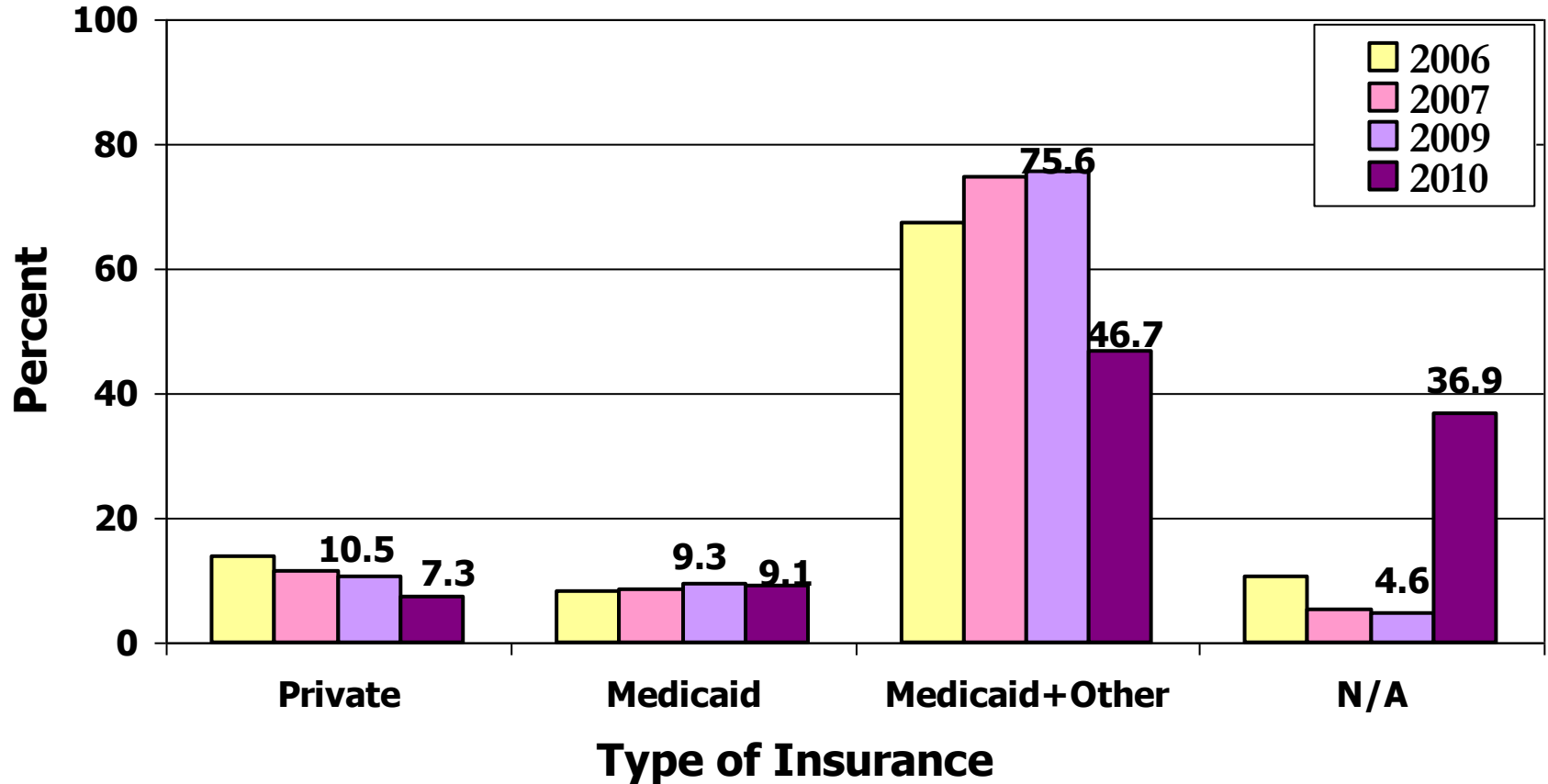
Source: Hillsdale County Senior Center Survey



Kind of Insurance

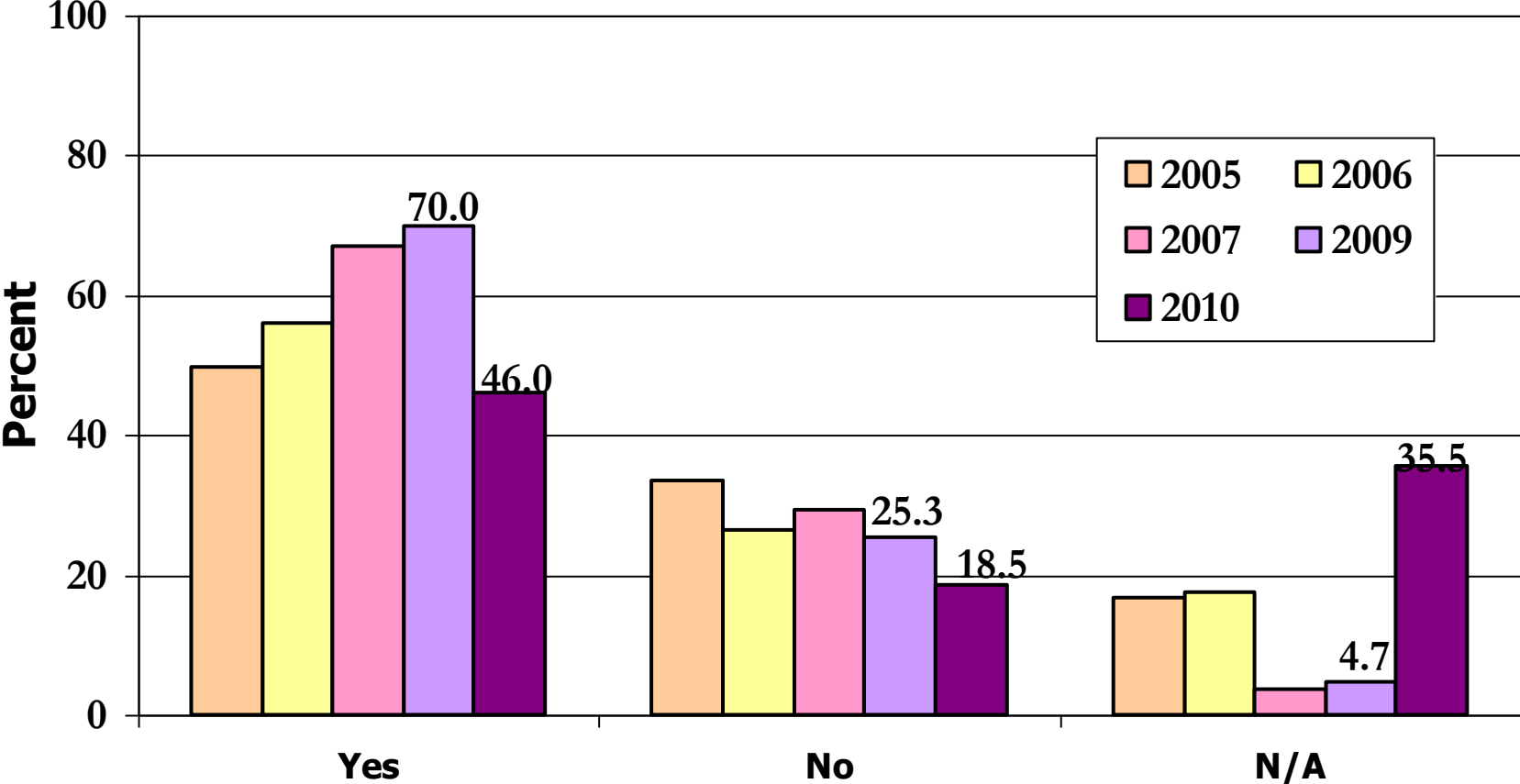
2006, 2007, 2009, 2010

Source: Hillsdale County Senior Center Survey



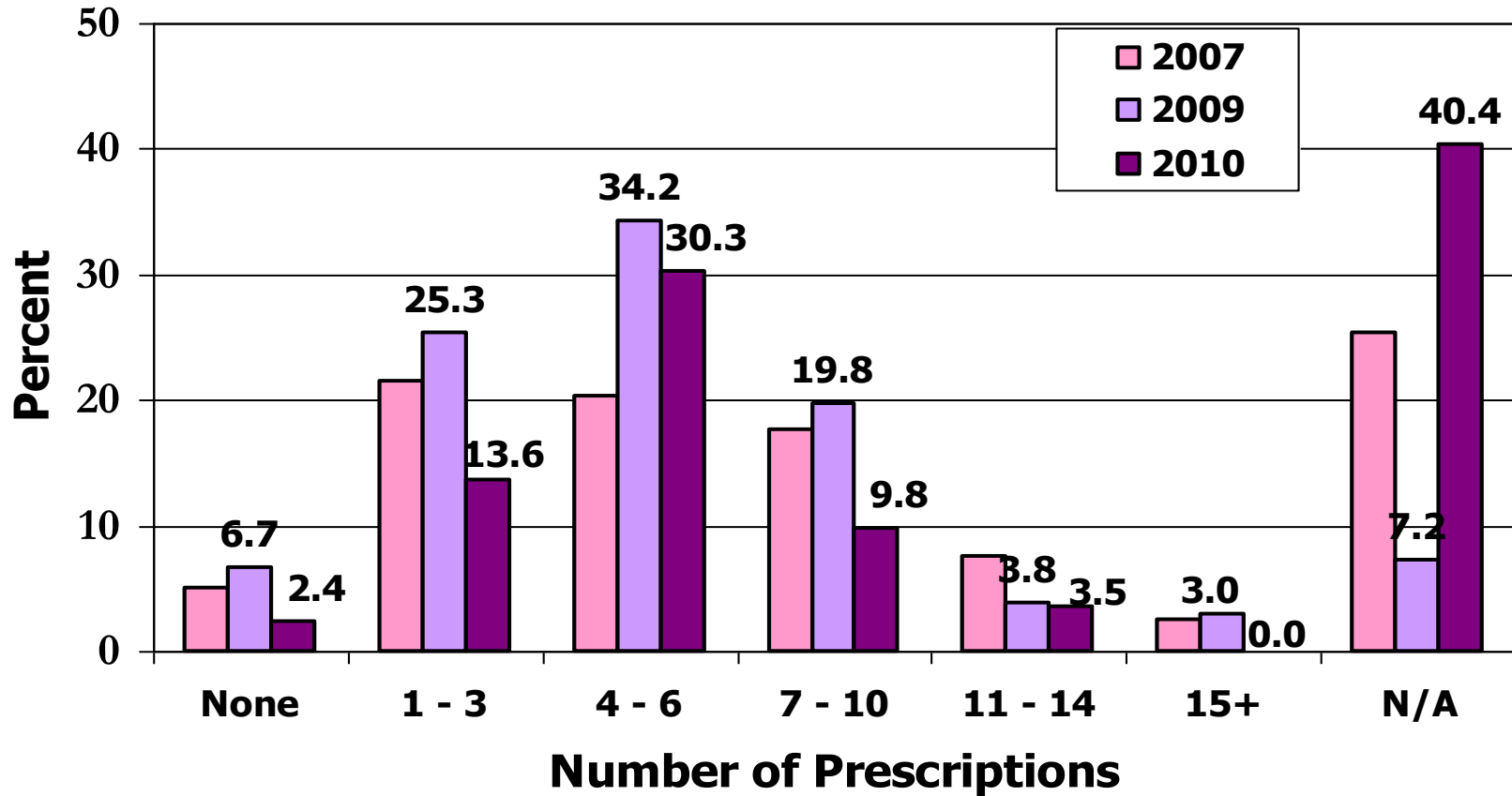
Does Insurance Cover All or Part of Your Prescriptions?

Source: Hillsdale County Senior Center Survey



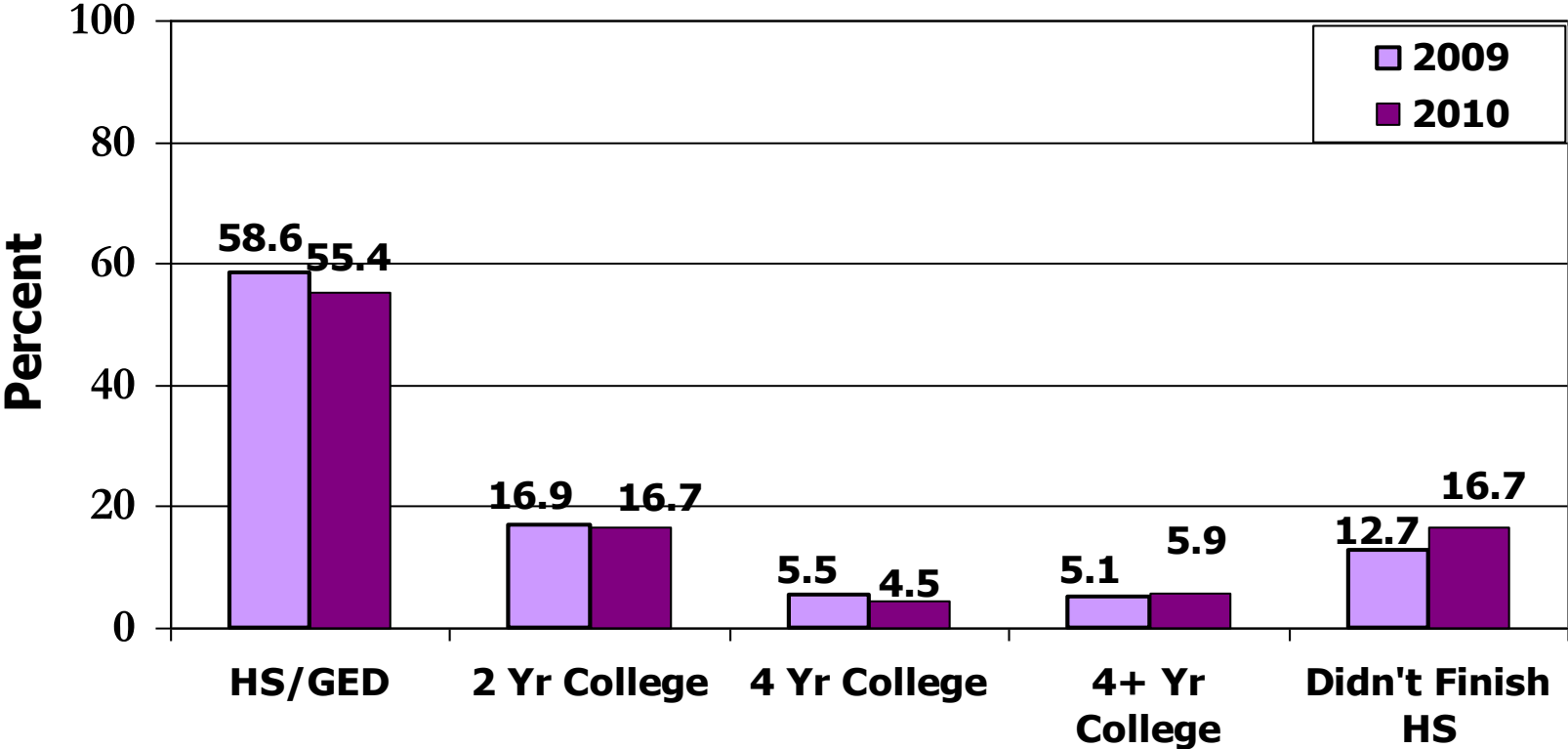
How Many Prescriptions Do You Currently Take?

Source: Hillsdale County Senior Center Survey



Education Level

Source: Hillsdale County Senior Center Survey





**How far you go in life depends on your being
tender with the young,
compassionate with the aged,
sympathetic with the striving and
tolerant of the weak and strong.**

**Because someday in life you will have been all
of these.**

George Washington Carver