

# HSN Indicators



**Children Birth to Five**

October 2010

# Data – Gotta Love It.....

If you torture data long enough, it will tell you anything you want !

There are three kinds of lies: lies, damned lies, and statistics.

Benjamin Disraeli

There are two kinds of statistics: the kind you look up, and the kind you make up.

Rex Stout

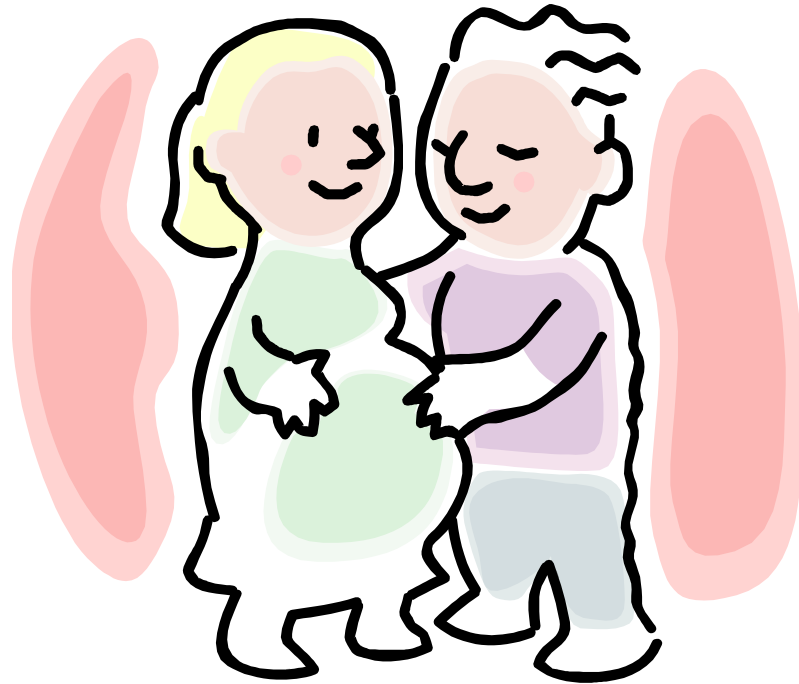
# Glossary of terms

- **Number** - Actual number of reported cases
- **Percent** - The percent of the total number of cases compared to the population - ex: 1 out of 4 = 25%
- **Rate** - How many you would expect, given your actual number, based on an agreed upon higher population. For example, most health related 'rates', compare all actual numbers to a population of 100,000. Rates are used to compare numbers between small groups and large groups.

$$\frac{30}{46,500} = \frac{64.6}{100,000} = \frac{6,395}{9,900,000}$$

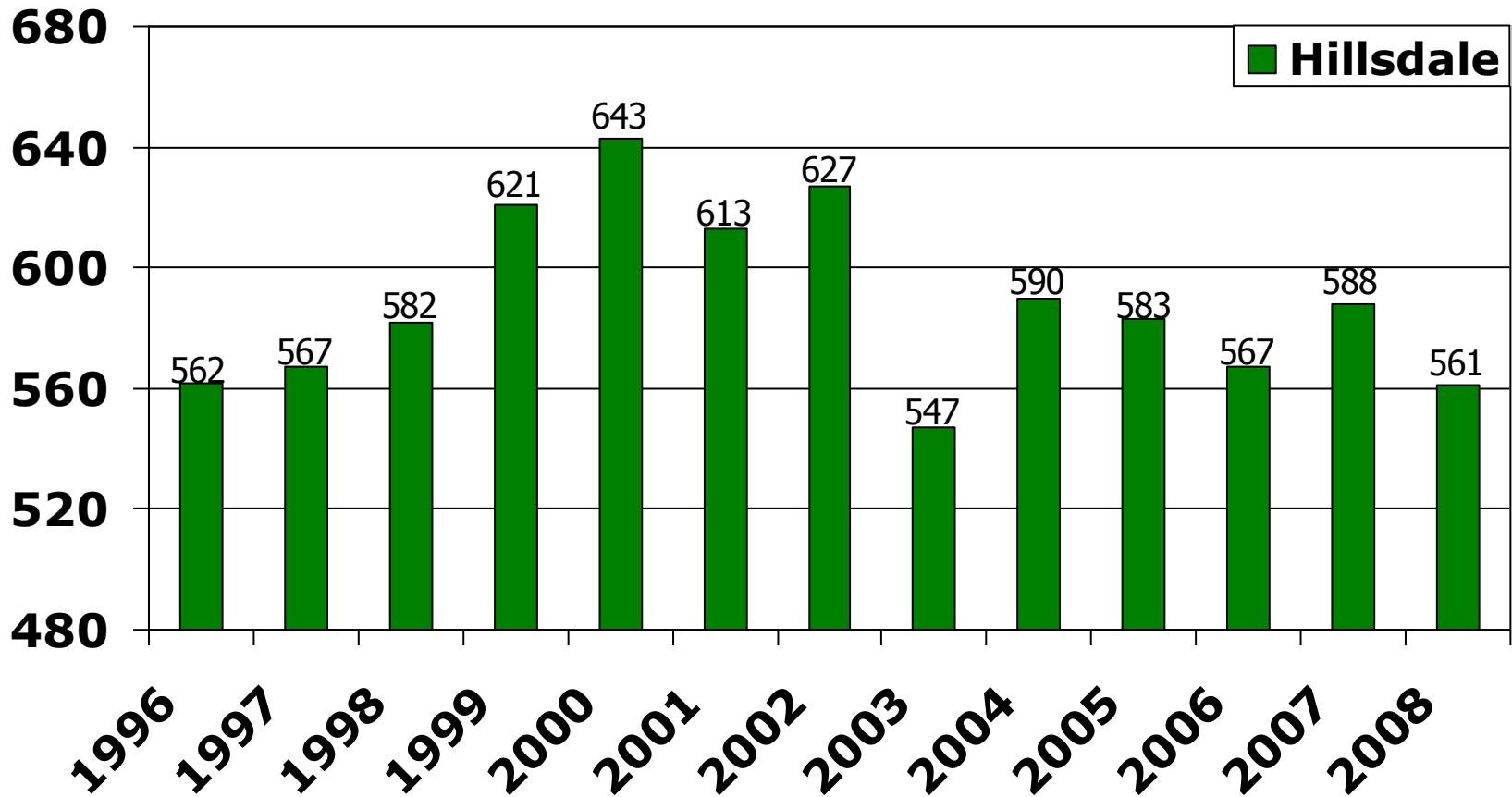
- The above example changes 30 cases in Hillsdale County with a population of 46,500, to a rate of 64.6 cases per 100,000. This allows comparison to a larger population rate. Michigan, with 6,395 actual cases, has the same rate – 64.6

# Pregnancy & Prenatal Care



# Births by Year – Hillsdale County

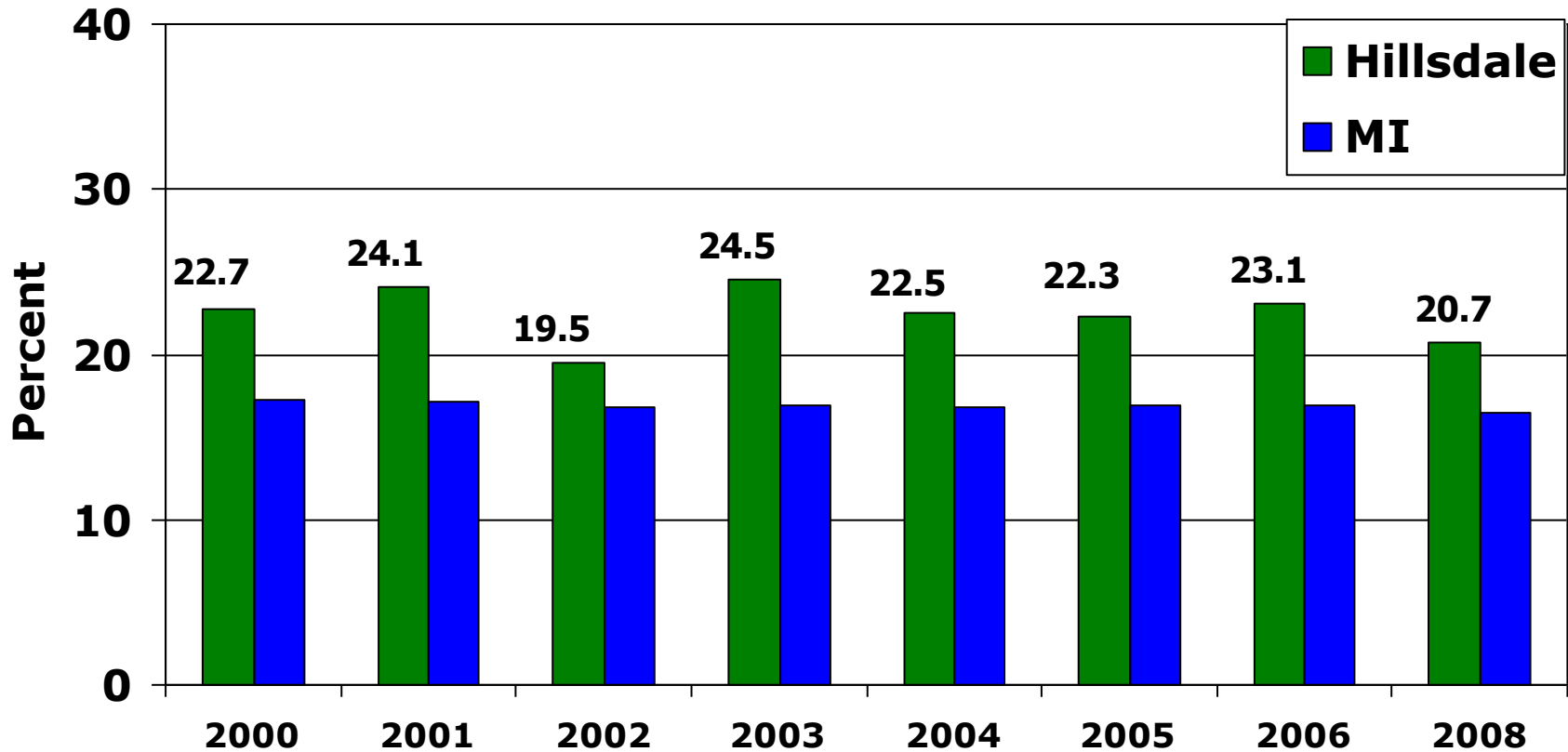
Source: Michigan Birth Files - MDCH



# Mothers Without a High School Diploma

## Percent of Total Births

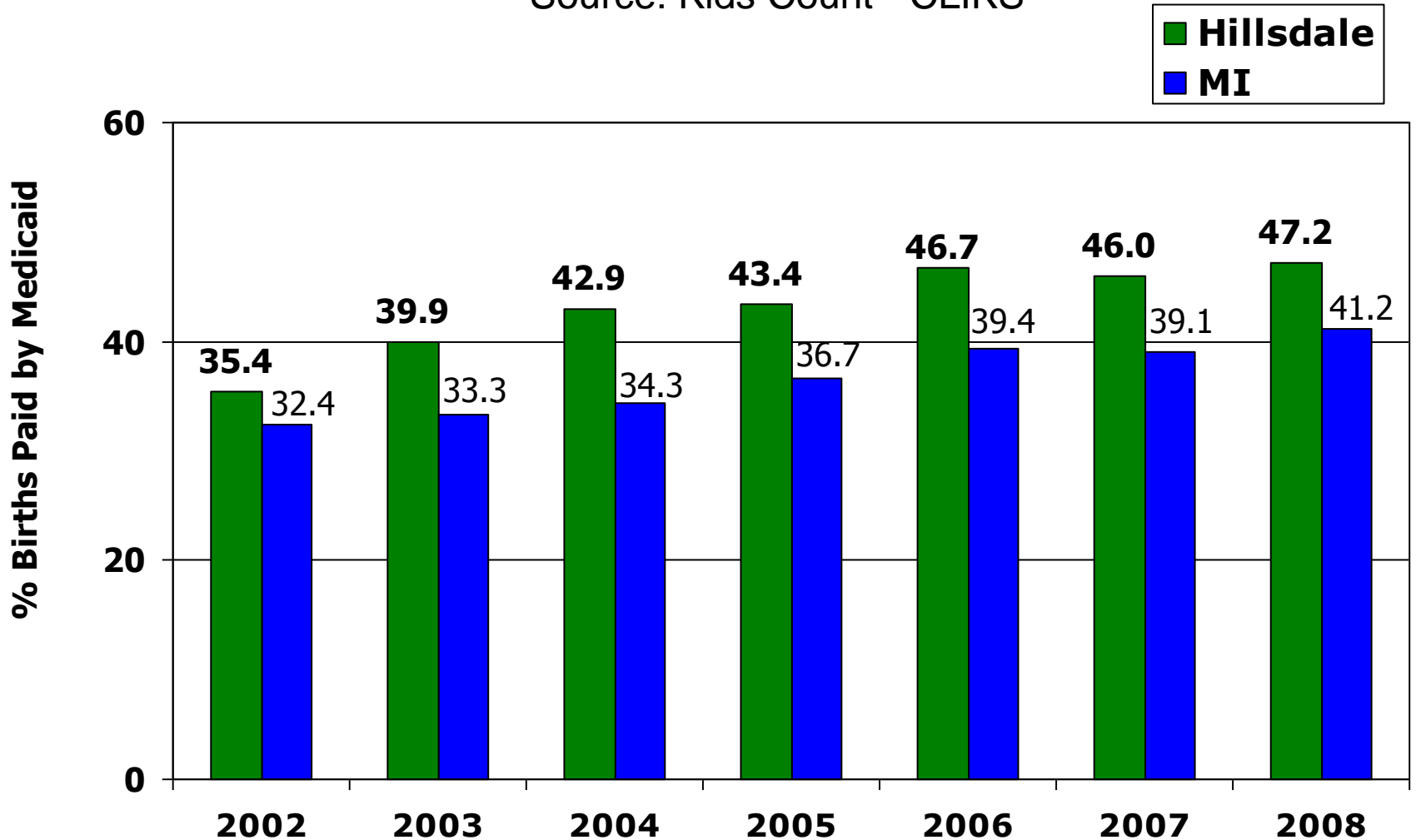
Hillsdale Co. and MI  
Source: Michigan birth files



# Births Paid by Medicaid 2002-2008

## Hillsdale County and MI

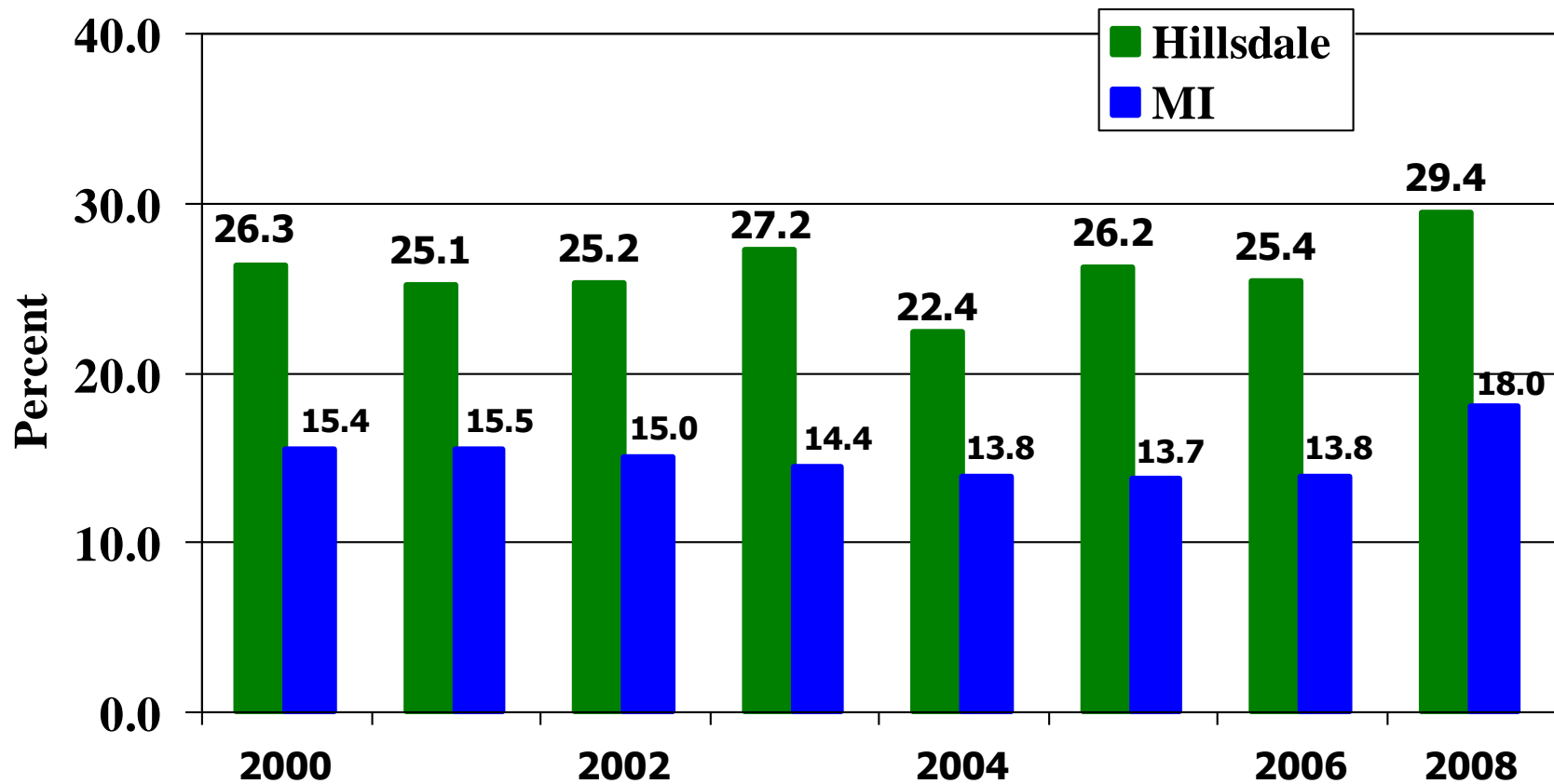
Source: Kids Count - CLIKS



# Mothers - Smoking While Pregnant

Percent of Total

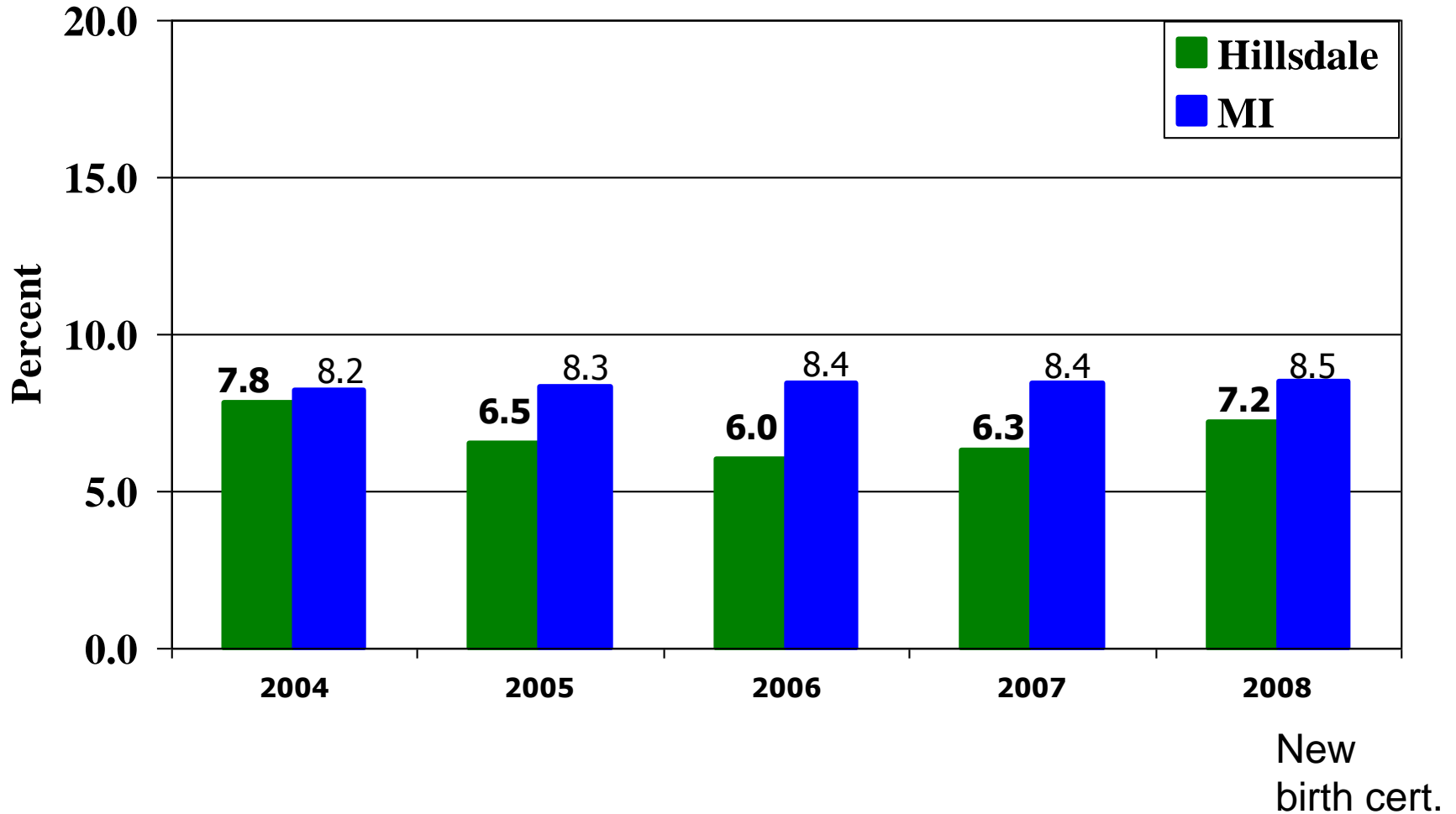
Source: Michigan Birth Files



New  
birth cert.

# Low Birthweight Babies (<5.5 pounds)

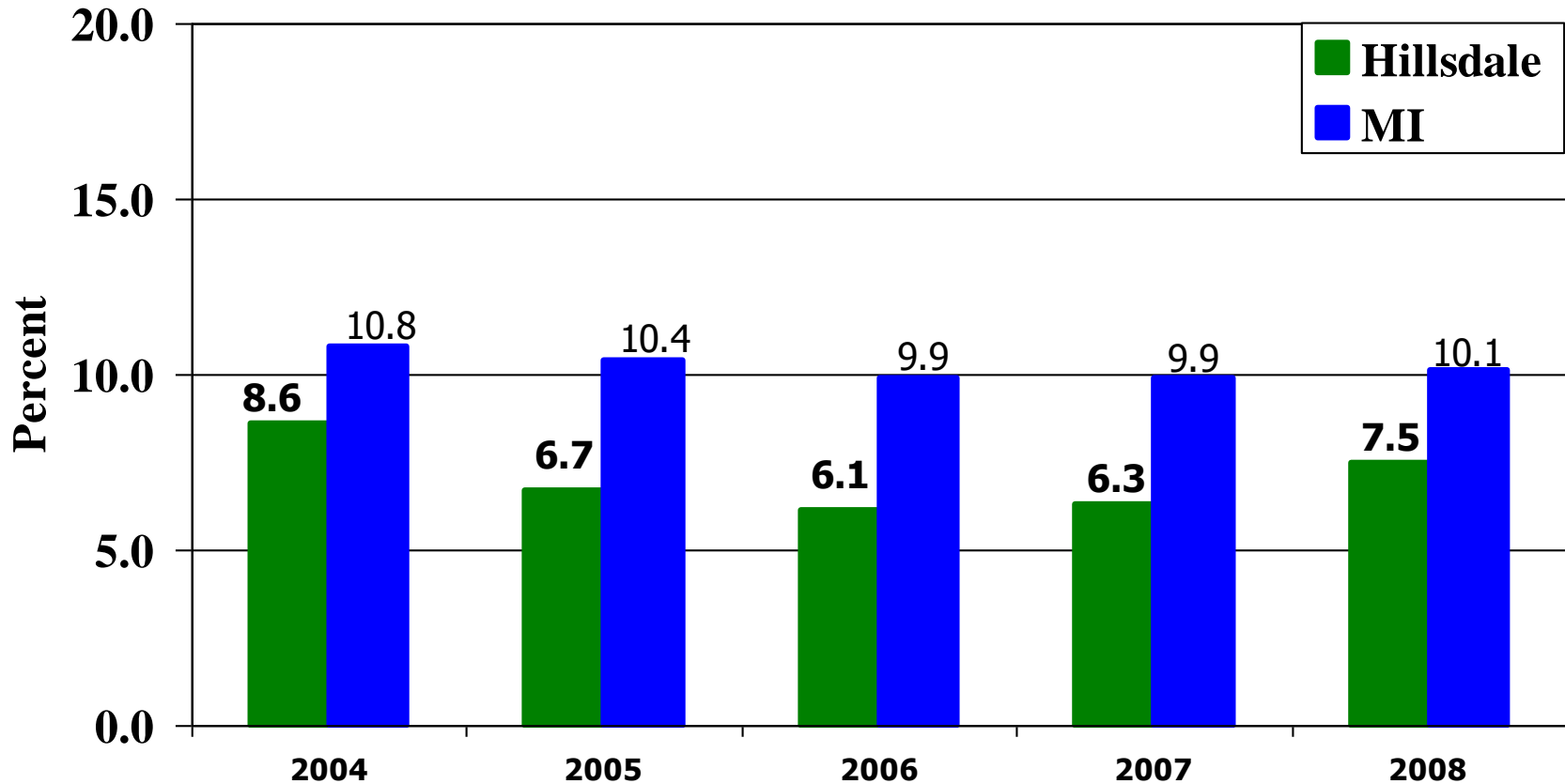
Percent of Total Births  
Source: Michigan Birth Files



# Preterm Births (prior to 37 weeks)

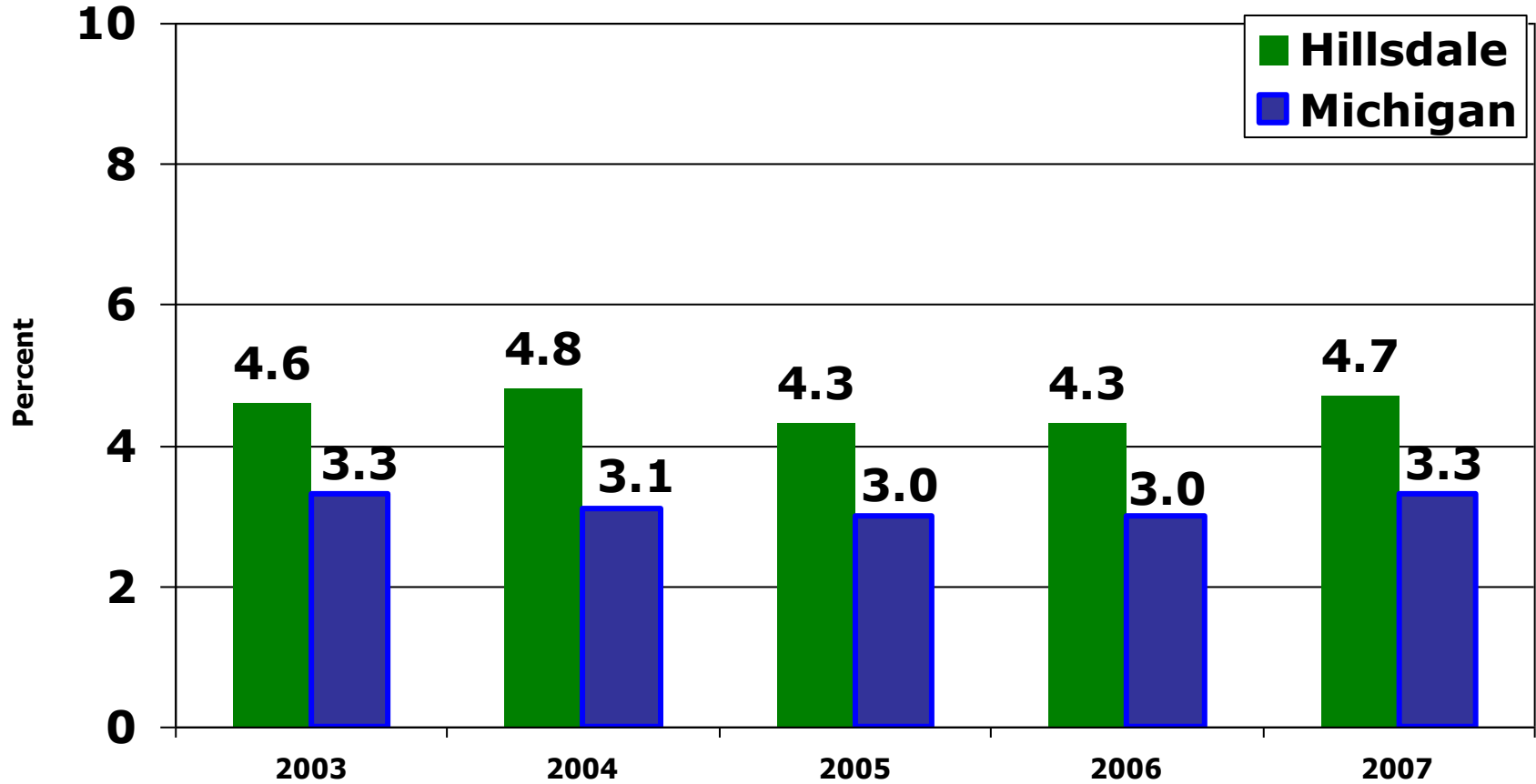
Percent of Total Births

Source: Michigan Birth Files



# Late or No Pre-Natal Care Percent of Total Births

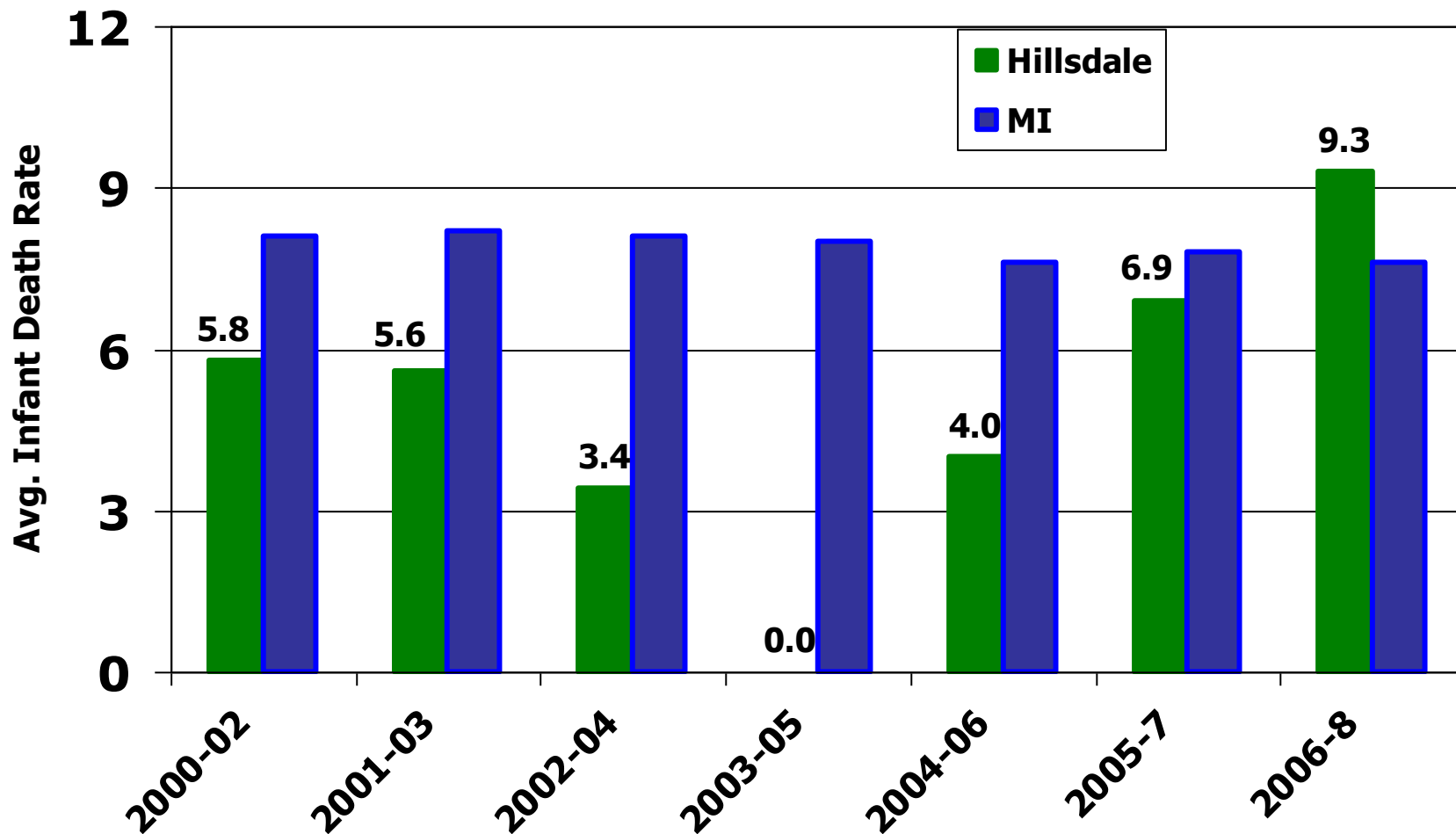
Source: Michigan Birth Files



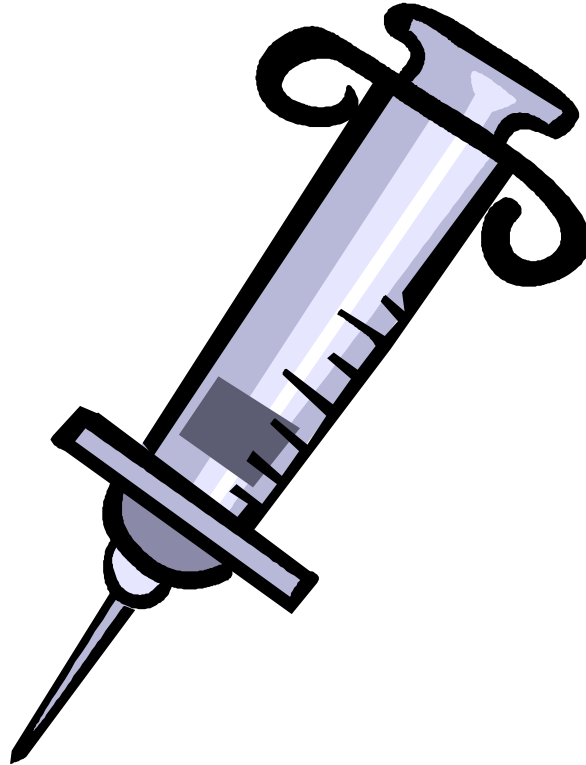
# Infant Mortality Rate

## 3 Year Averages (1994-2008)

Source: Michigan birth files

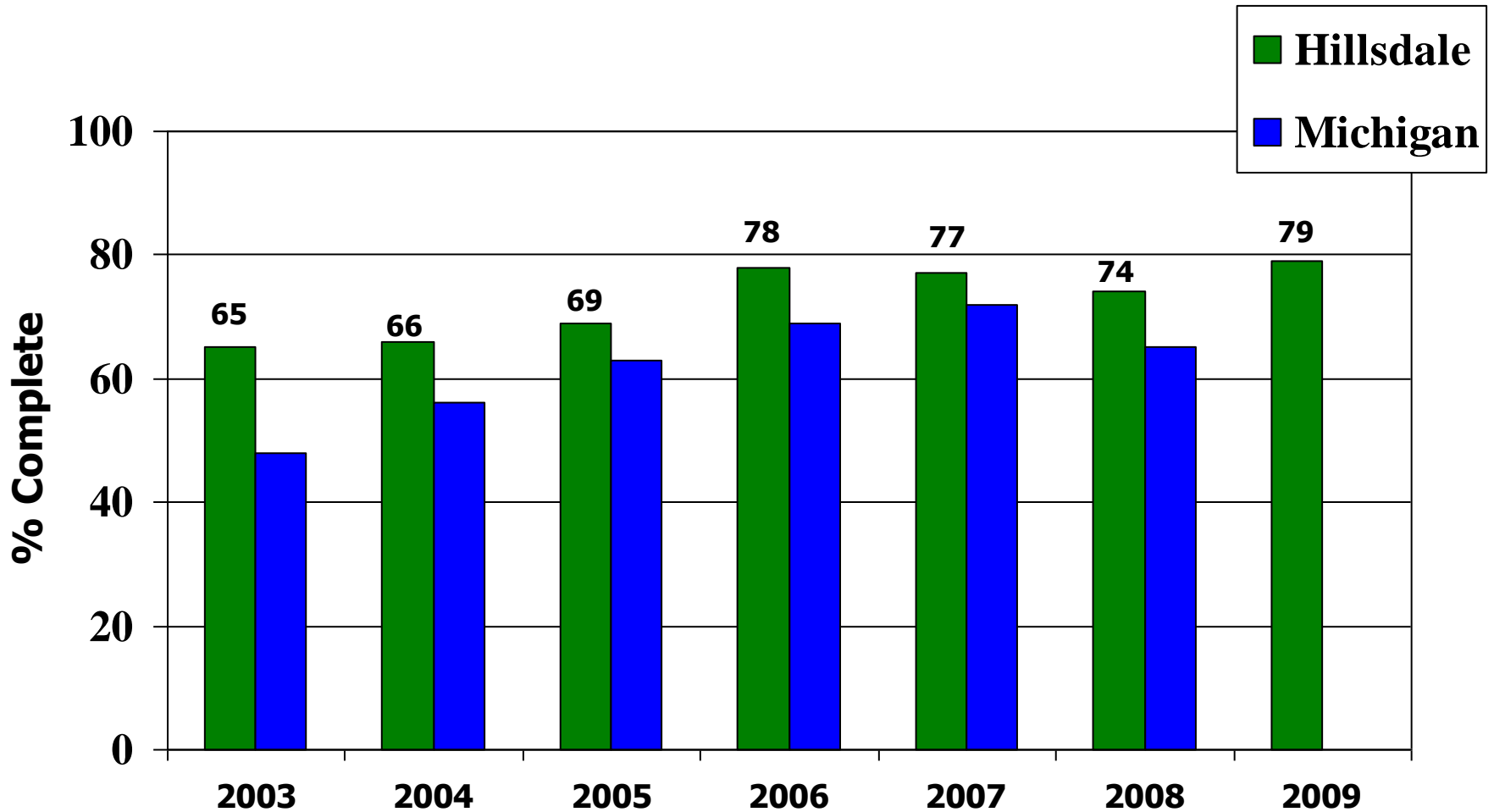


# Immunizations

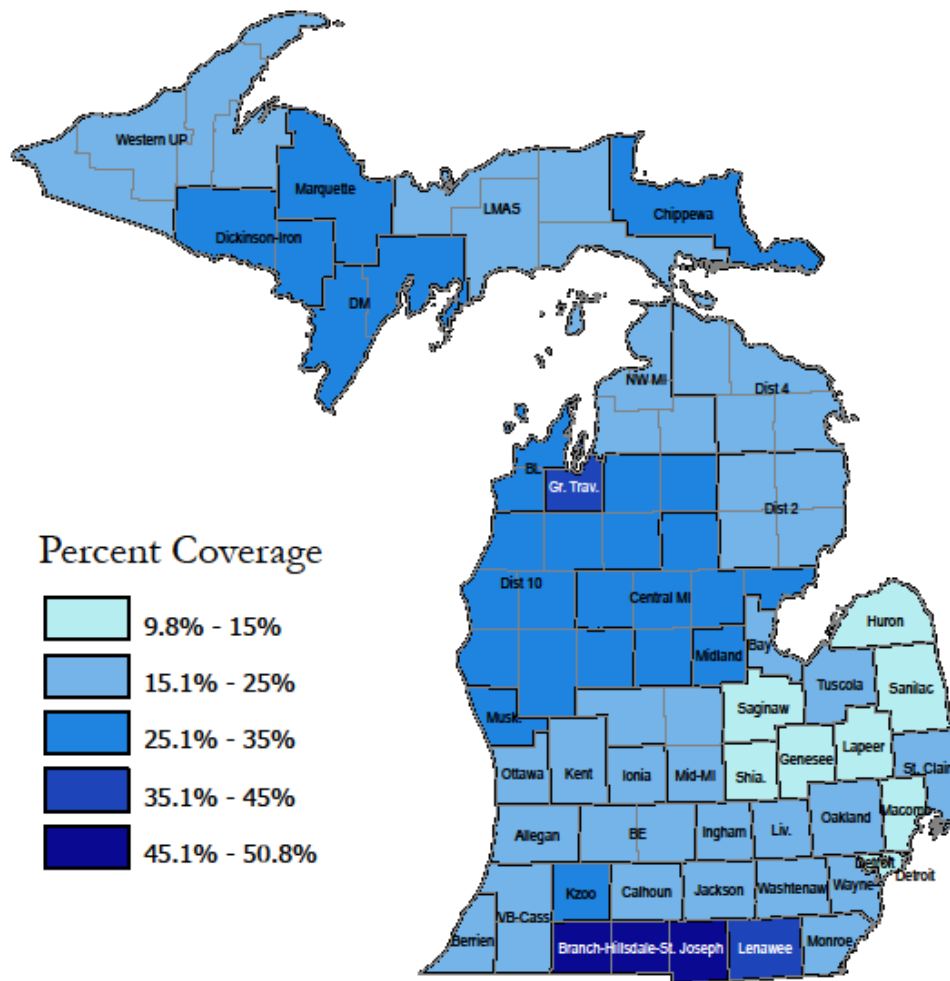


# Complete Immunizations, 19-36 Months Percent Complete

Source: Data Center – Kids Count



## One or More Dose H1N1 Coverage by Local Health Jurisdiction Children Aged 5 through 18 Years

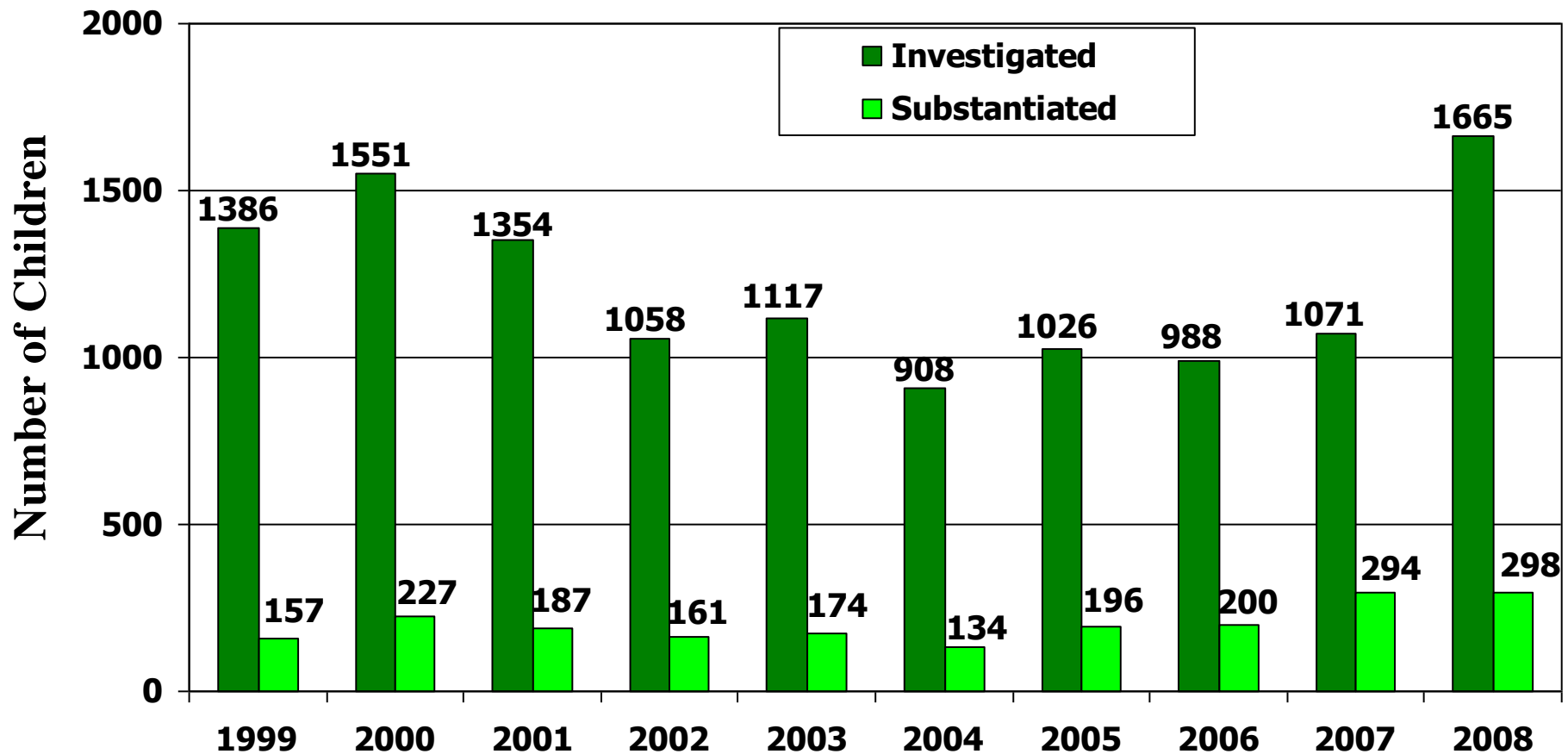


# Abuse and Neglect



# DHS - Abuse and Neglect Investigated and Substantiated – **Ages 0-18** Hillsdale - 1999-2008

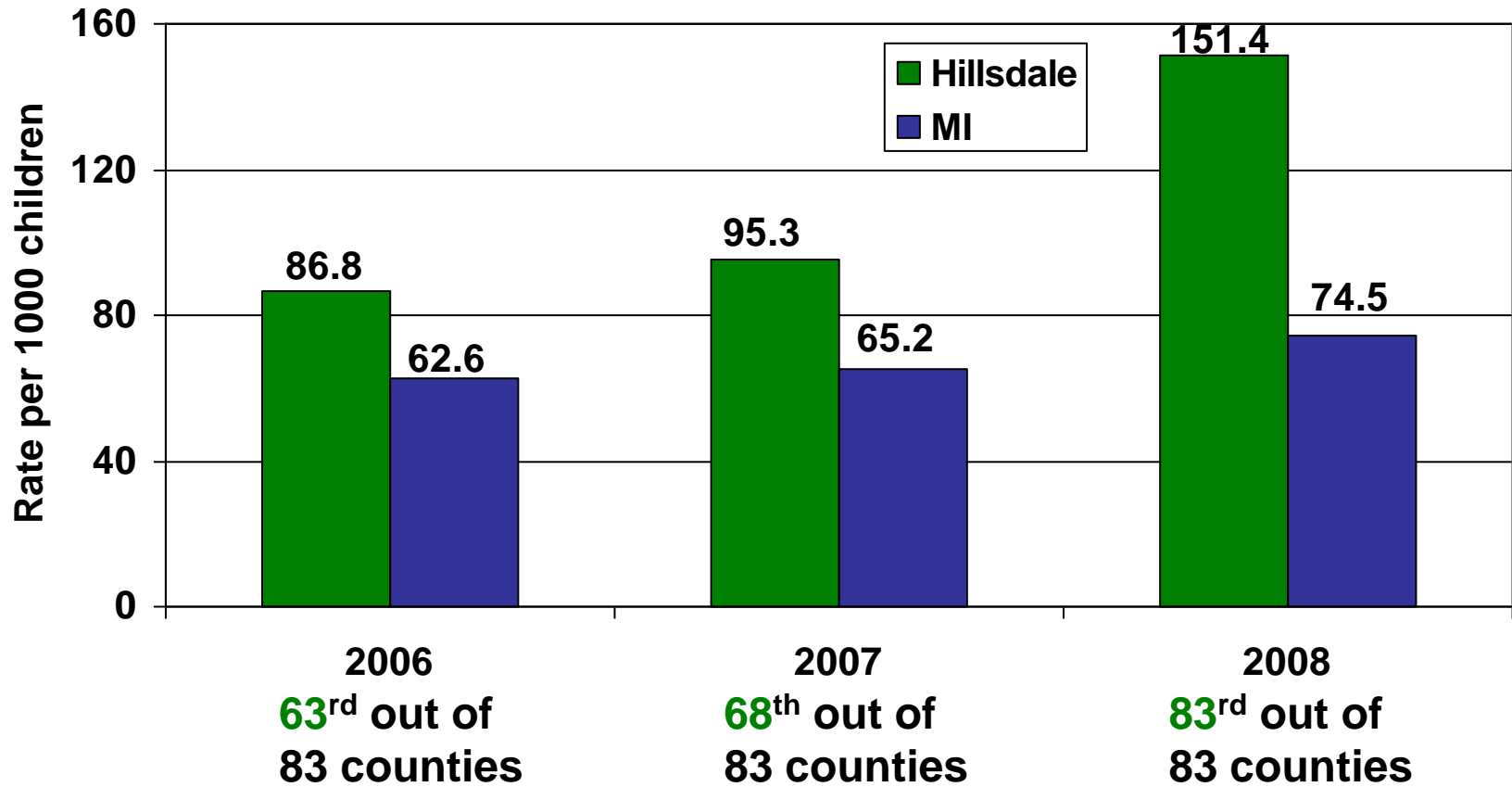
Source: Kids Count



# Children in Investigated Families

**Ages 0-18** Rate per 1,000 children

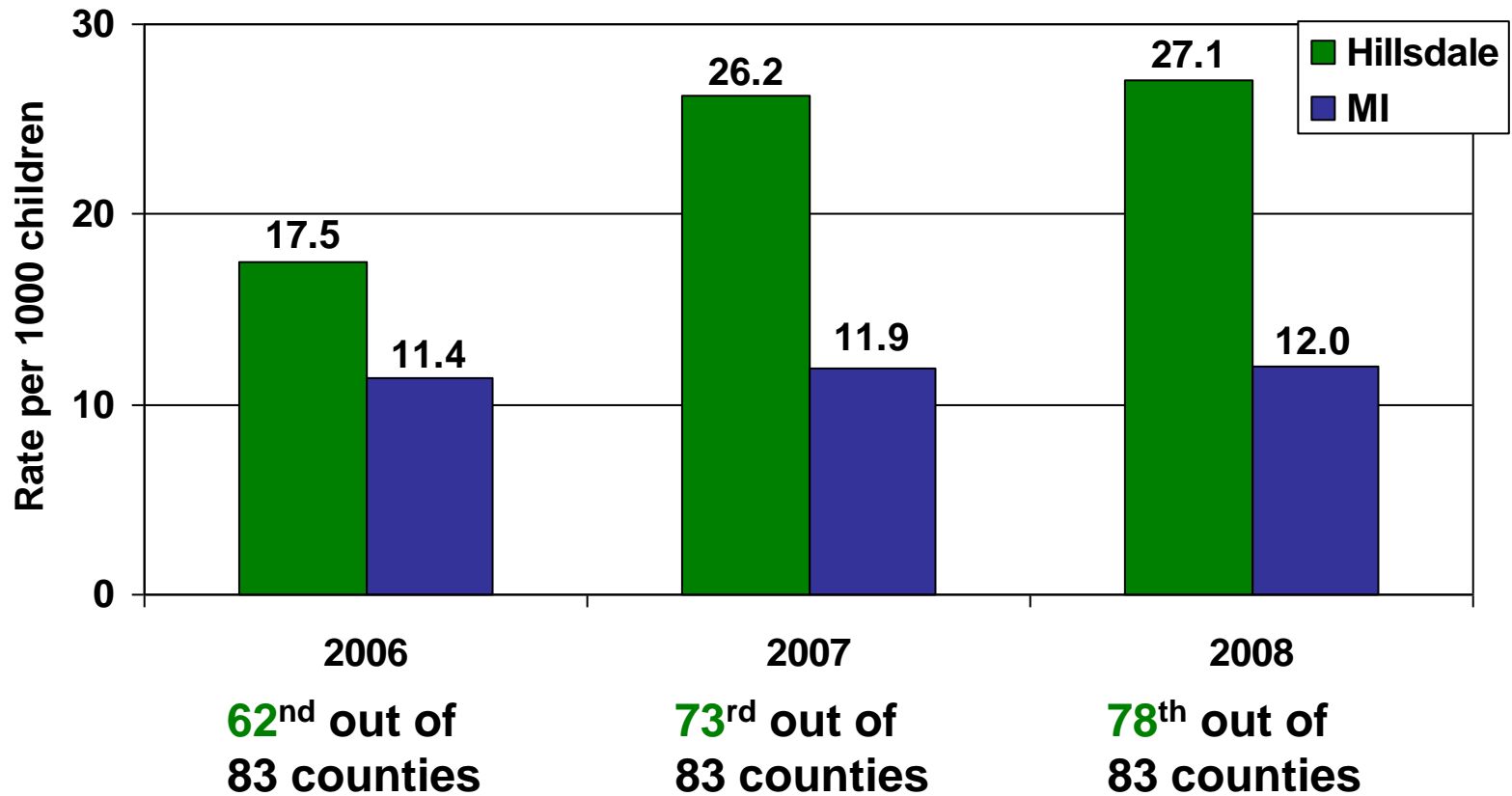
Source: Kids Count



# Confirmed Victims of Abuse and Neglect

**Ages 0-18** Rate per 1,000 children

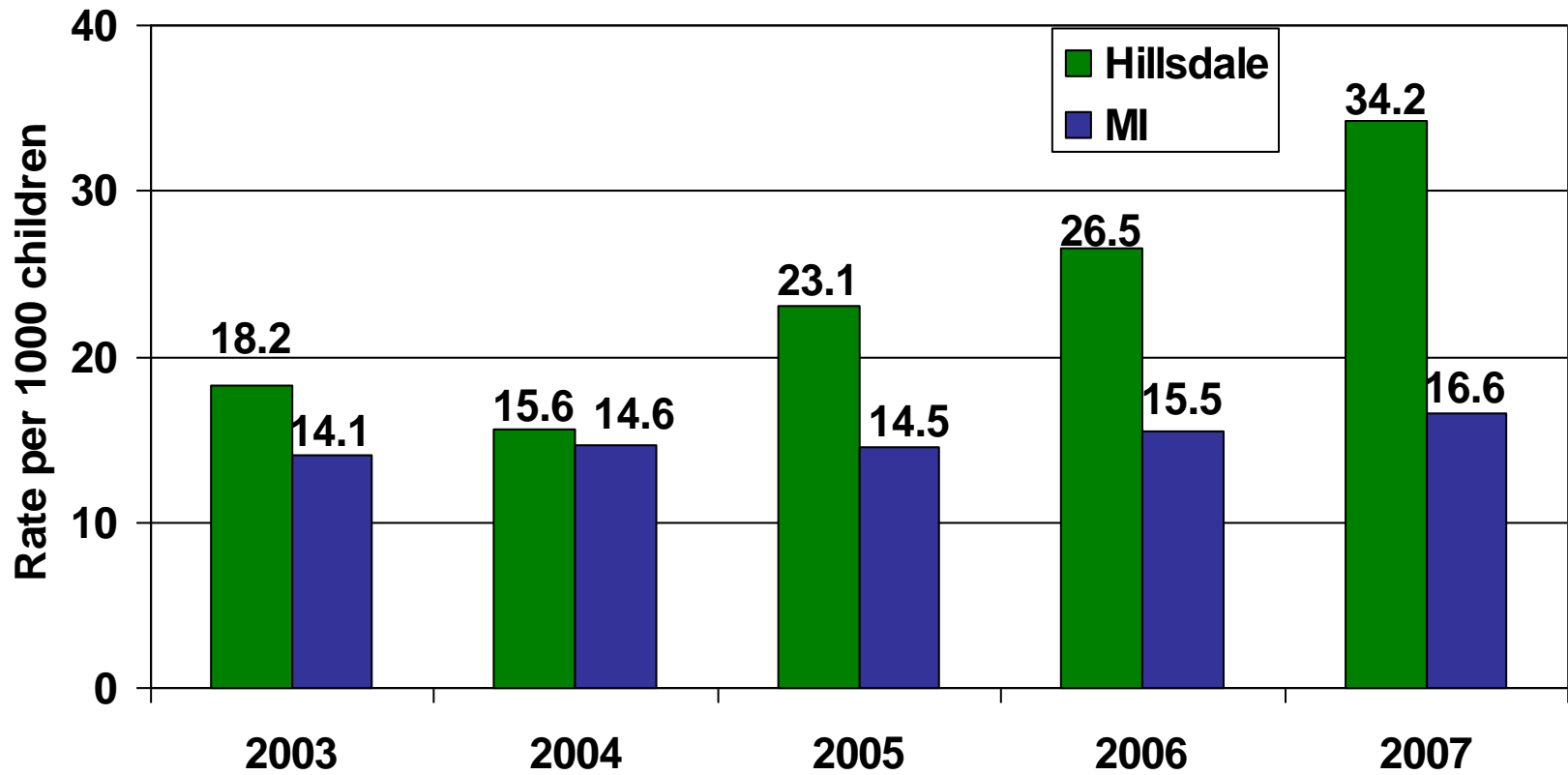
Source: Kids Count



# Confirmed Victims of Abuse and Neglect

**Ages 0-5** Rate per 1,000 children

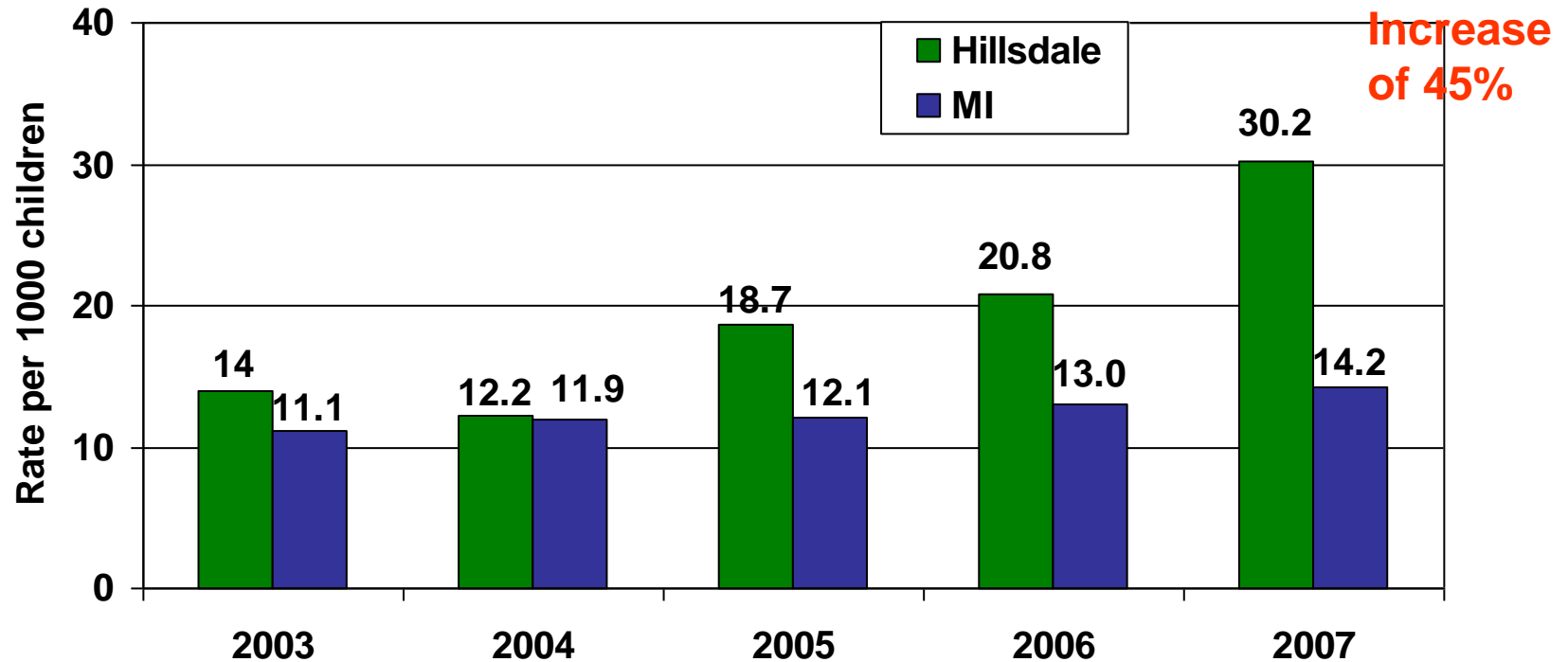
Source: Kids Count



# Confirmed Victims of Neglect Only

**Ages 0-5**

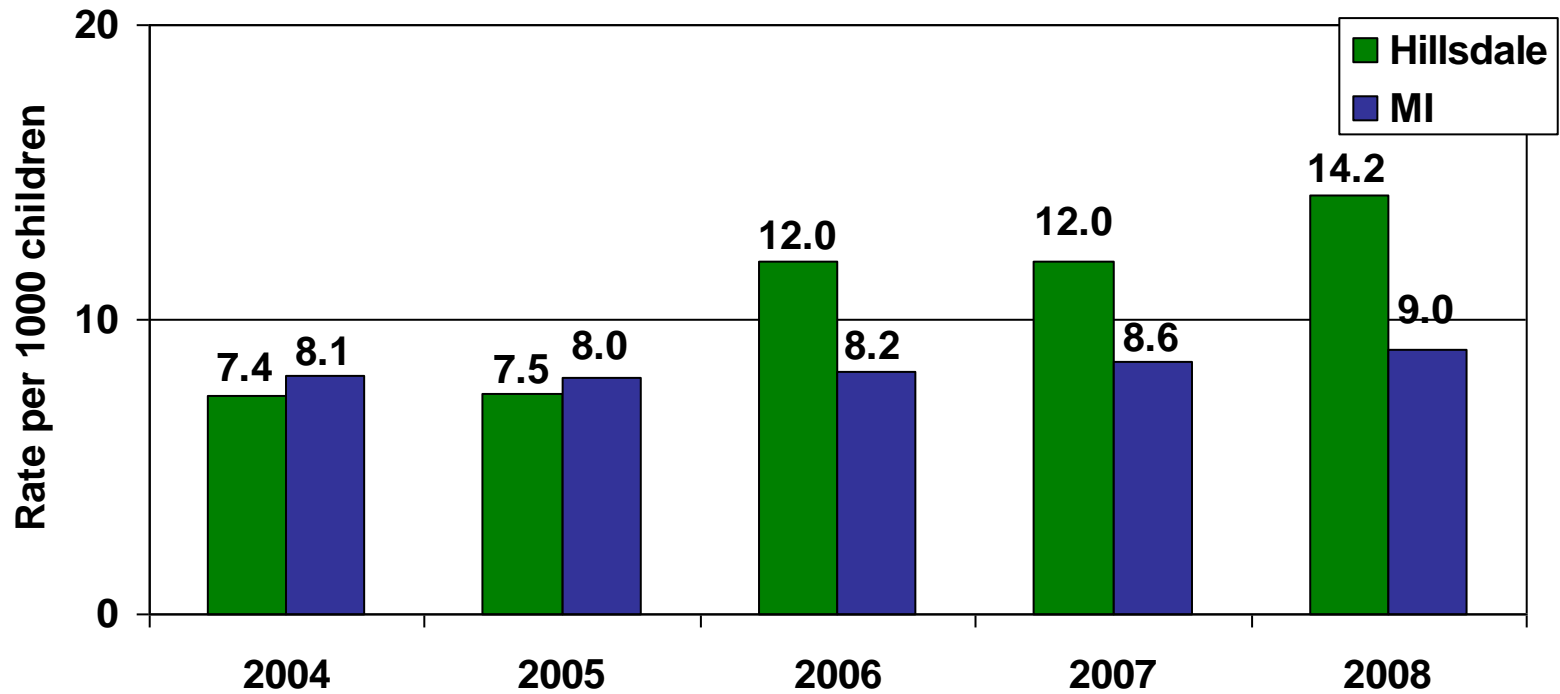
Rate per 1,000 children



# Children Ages 0-5 in Foster Care

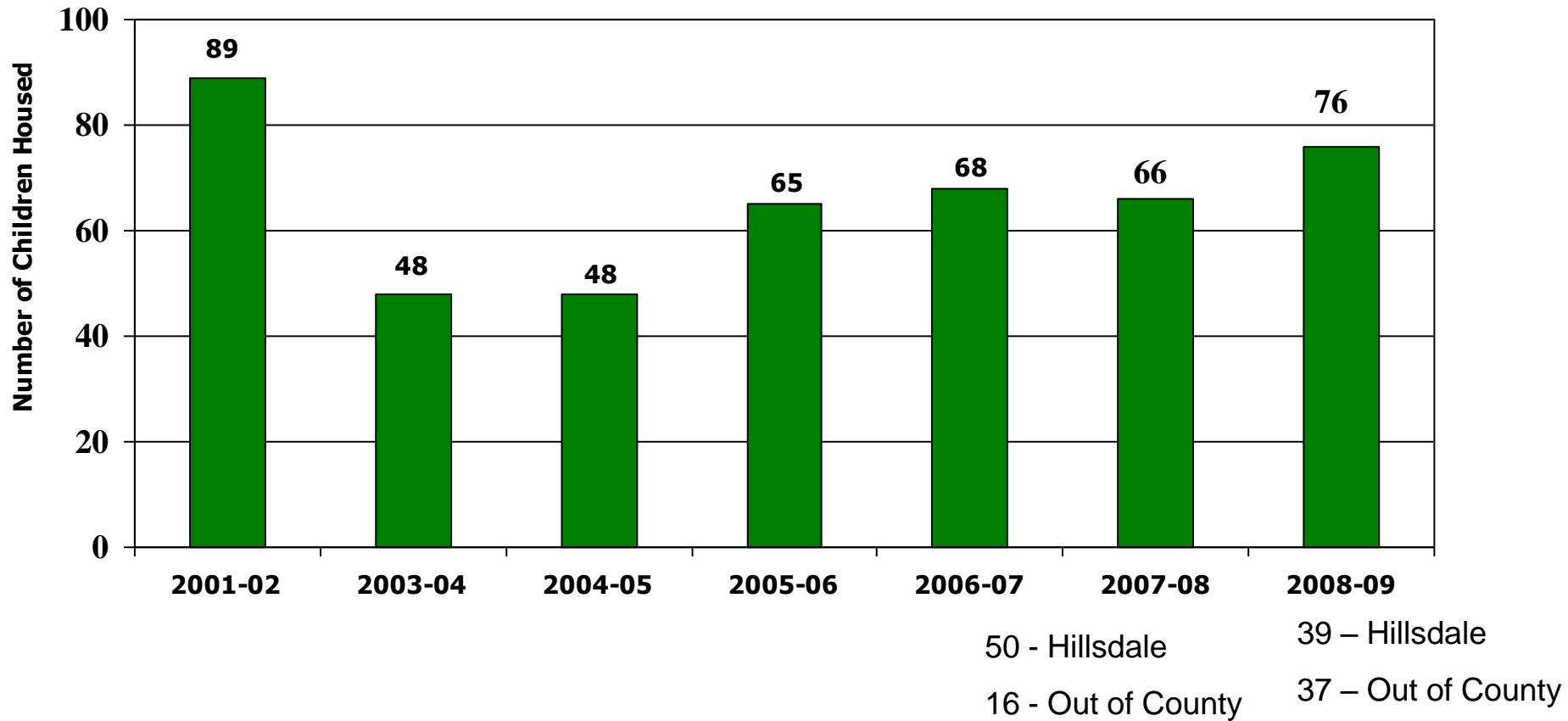
Rate per 1,000 children

Source: Kids Count



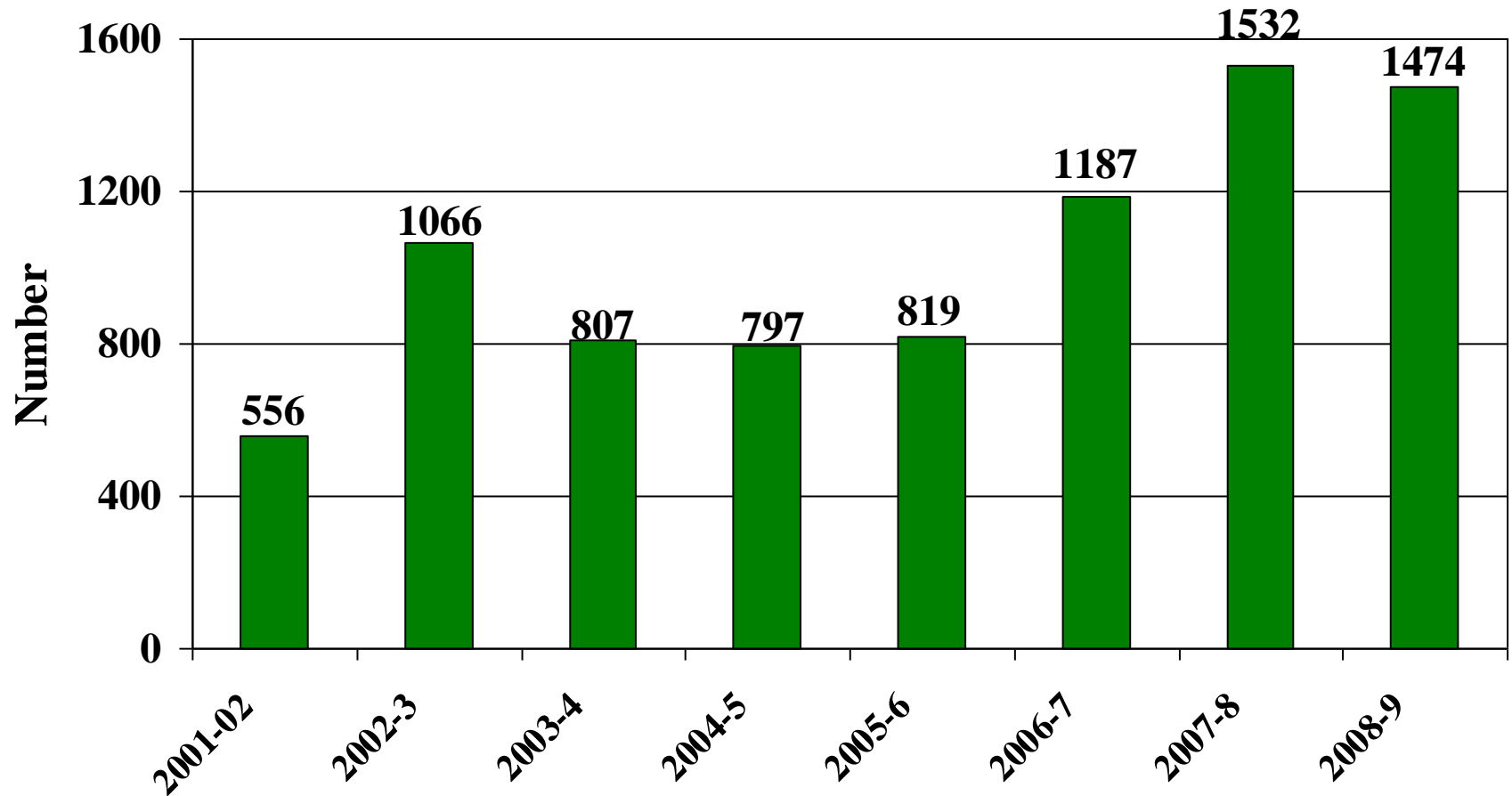
# Number of children (0 to 18) housed by Domestic Violence Shelter 2001-2009 – Hillsdale Co.

Source: Domestic Harmony



# Resident nights - children ages 0 to 18 in Domestic Violence Shelter, 1996-2009

Source: Domestic Harmony



# Preschool and Special Education

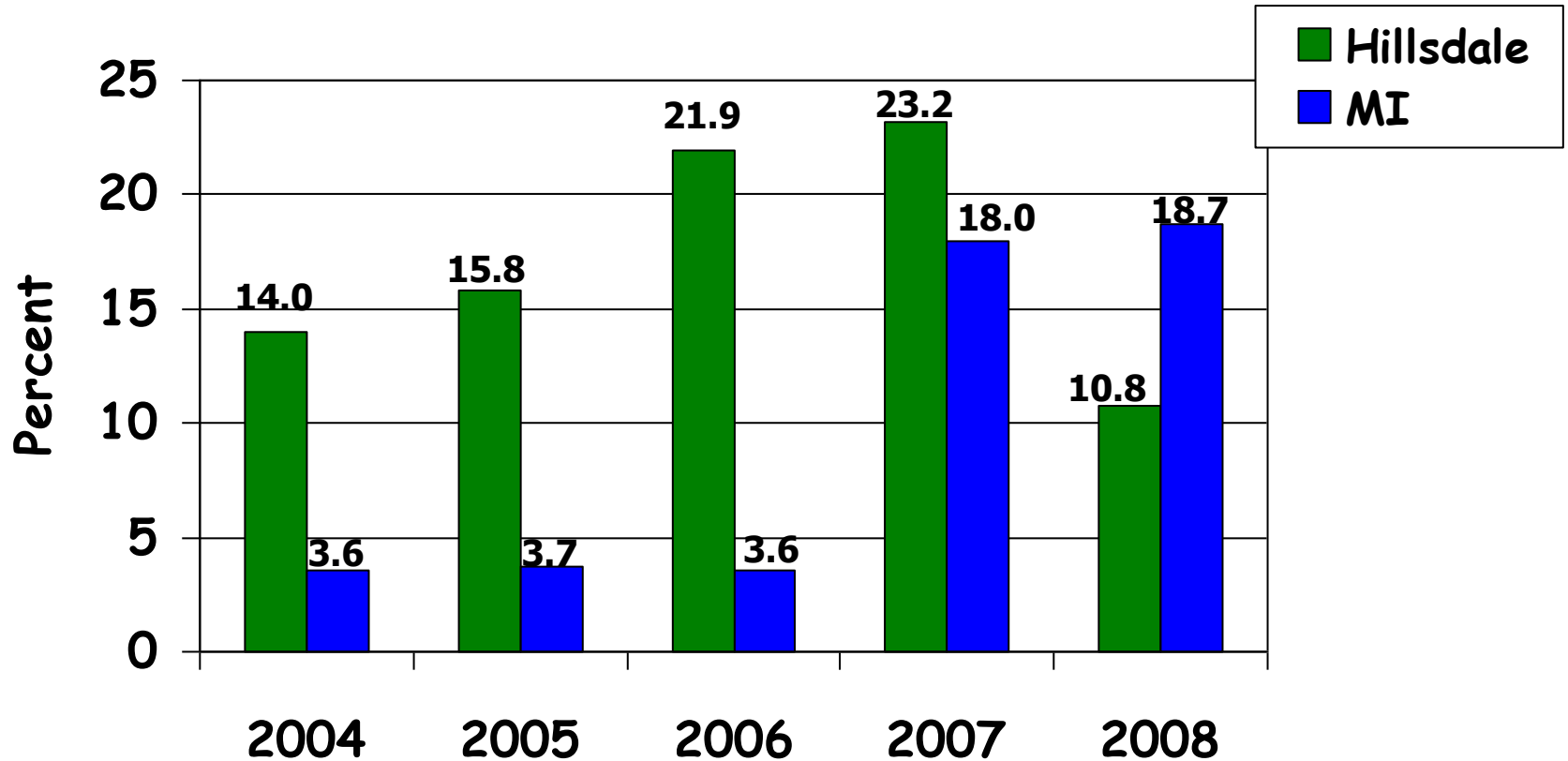


# Percent in GSRP (preschool) Age 4

Hillsdale Co. and Michigan

2002-2008

Kids Count, CAA



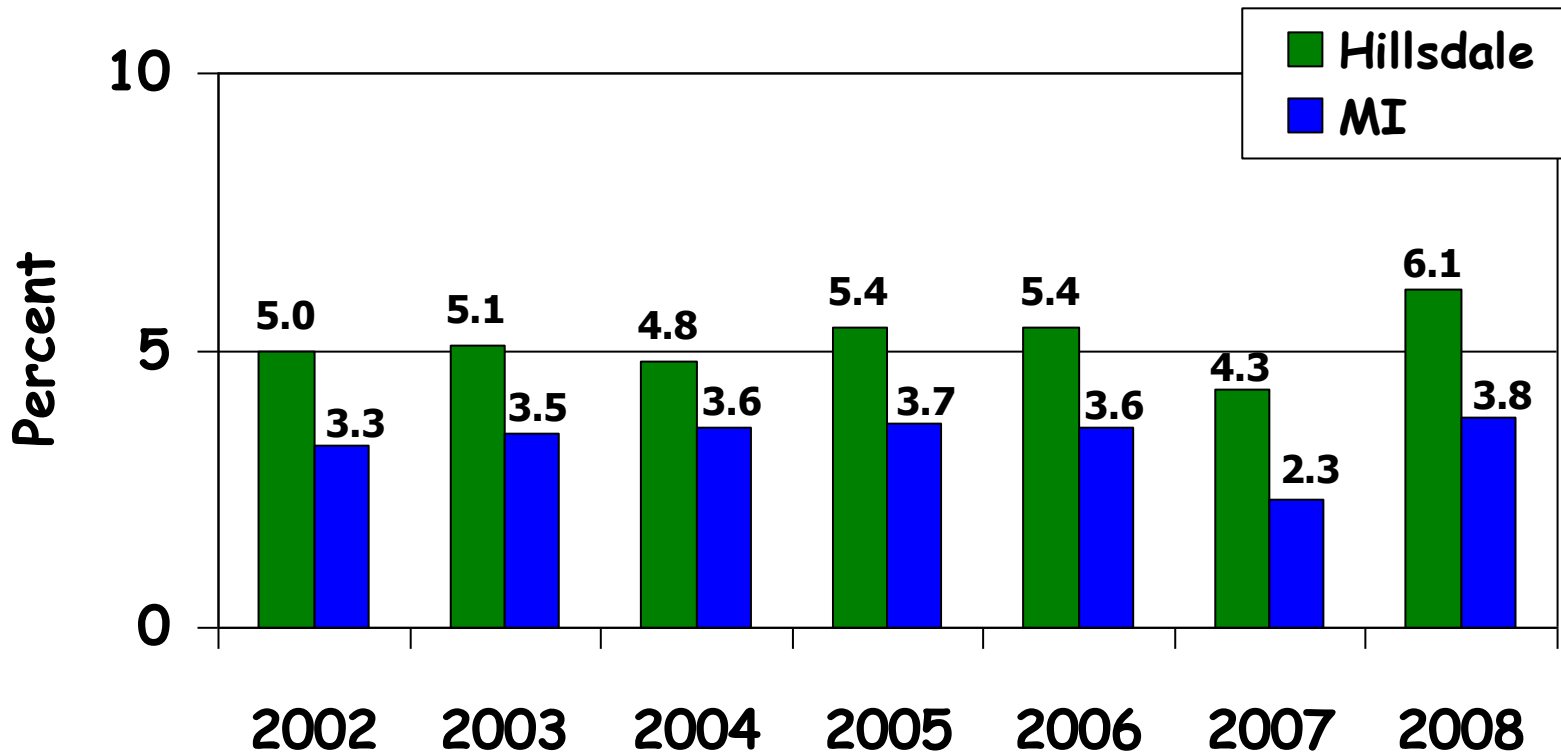
# Number of Students in GSRP in Hillsdale County

- **2006-2007: 140** children in GSRP
- **2007-2008: 62** children in GSRP
- **2008-2009: 65** children in GSRP
- **2009-2010: 57** children in GSRP

# Percent in Special Education Ages 0-5

Hillsdale Co. and Michigan  
2002-2008

Source: Kids Count



A baby is born with a need to be loved -- and never outgrows it.

Frank A. Clark

