



HSN Report

Adults
September, 2008



Question

How can you tell if a statistician is an extrovert?

Answer:

When speaking to you, he looks at your shoes instead of his



Population – The Workforce for Hillsdale County

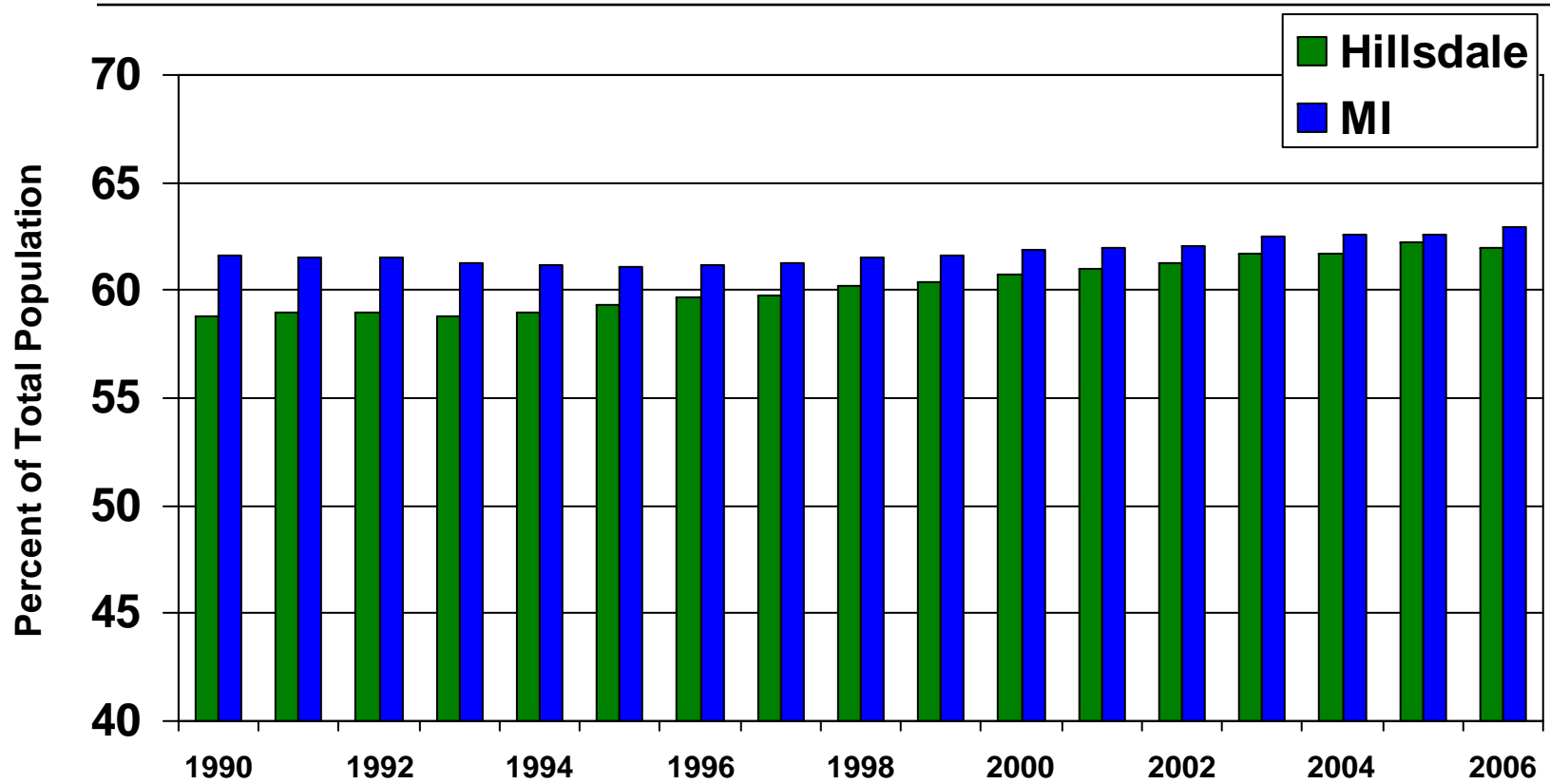
Population 1990 – 43,292

Population 2006 – 47,206

Population Trends 1990 to 2006

% of Population aged 18-65 years

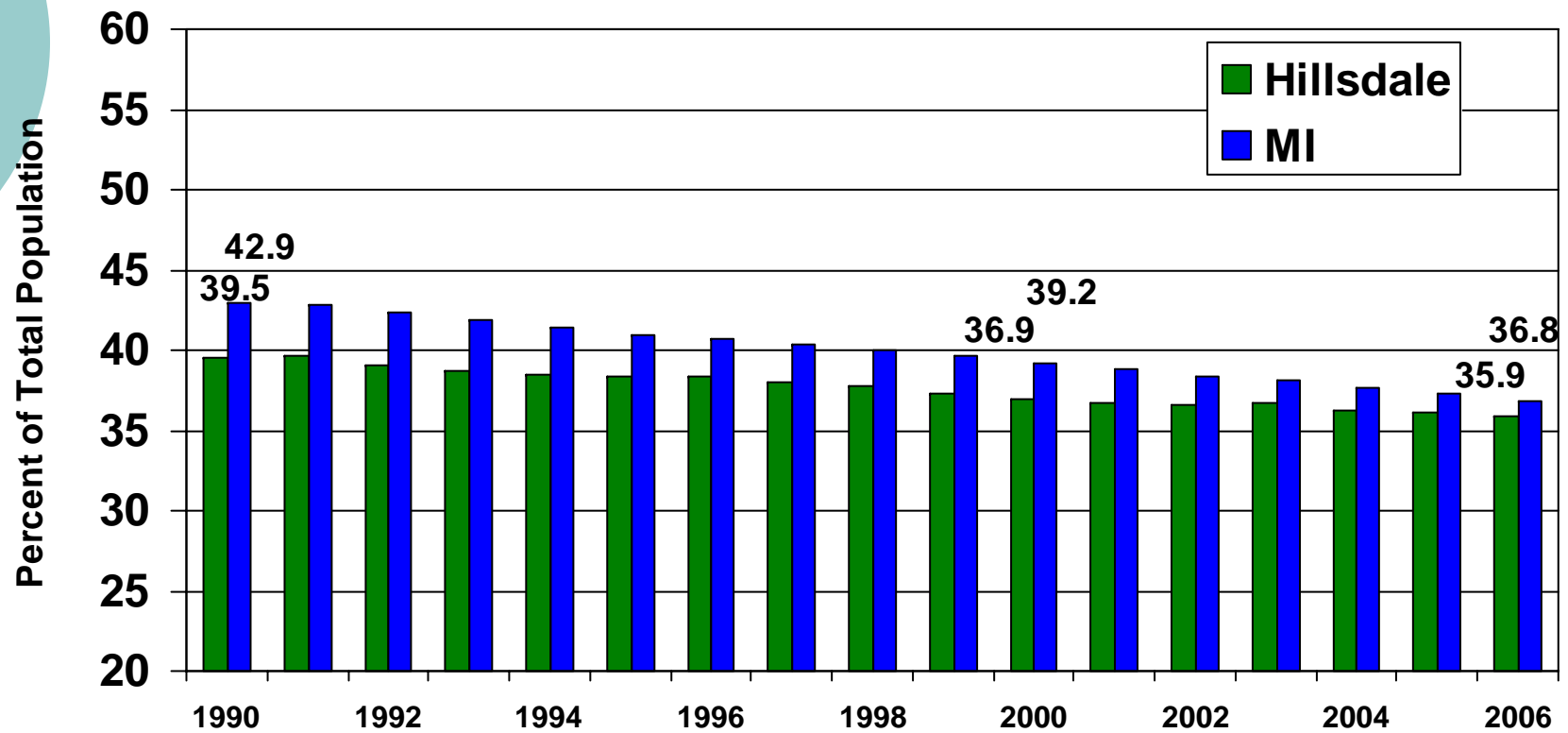
Source – Michigan Department of Community Health



Population Trends 1990 to 2006

% of Population aged 18-44 years

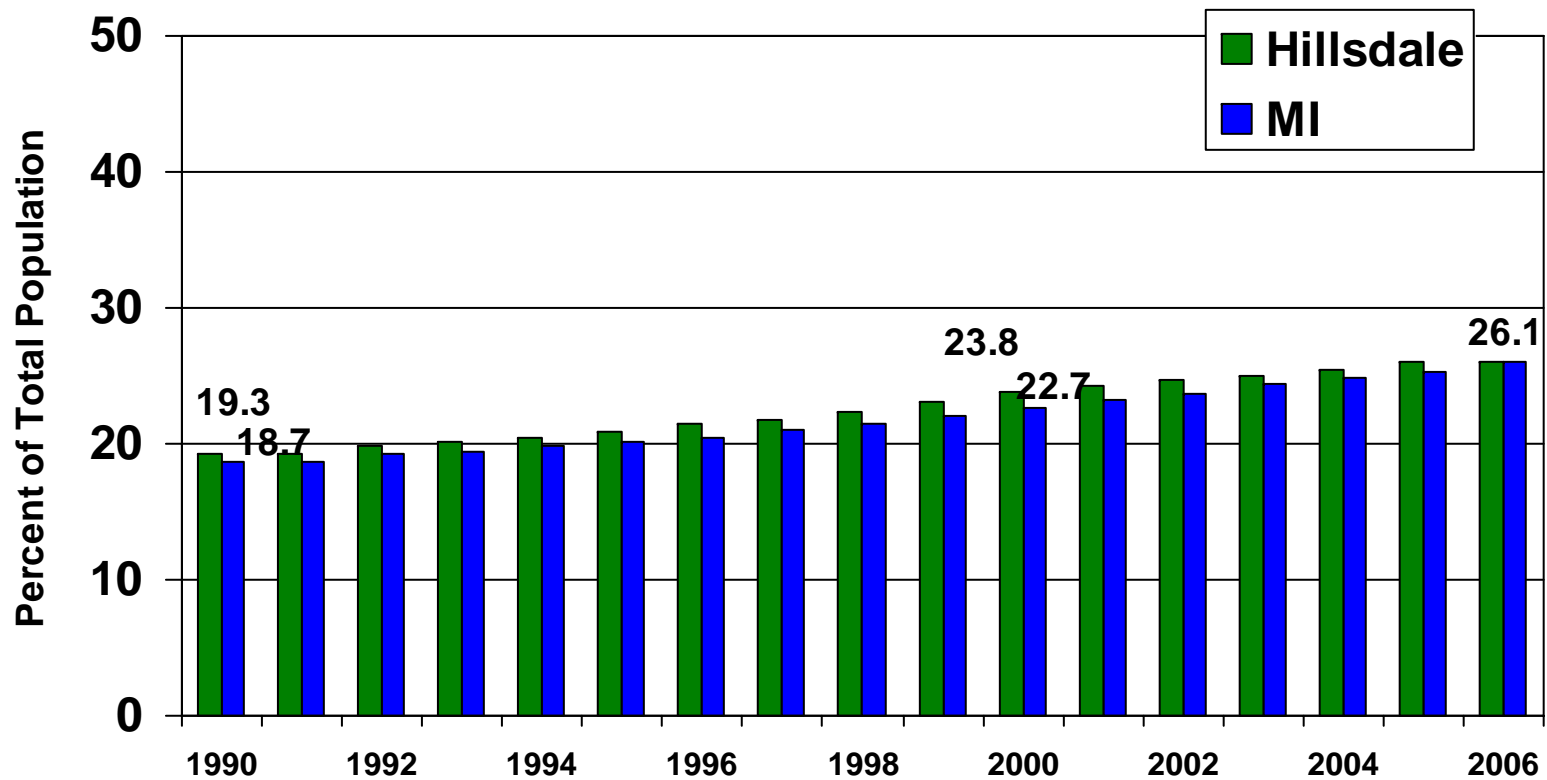
Source – Michigan Department of Community Health



Population Trends 1990 to 2006

% of Population aged 45-64 years

Source – Michigan Department of Community Health

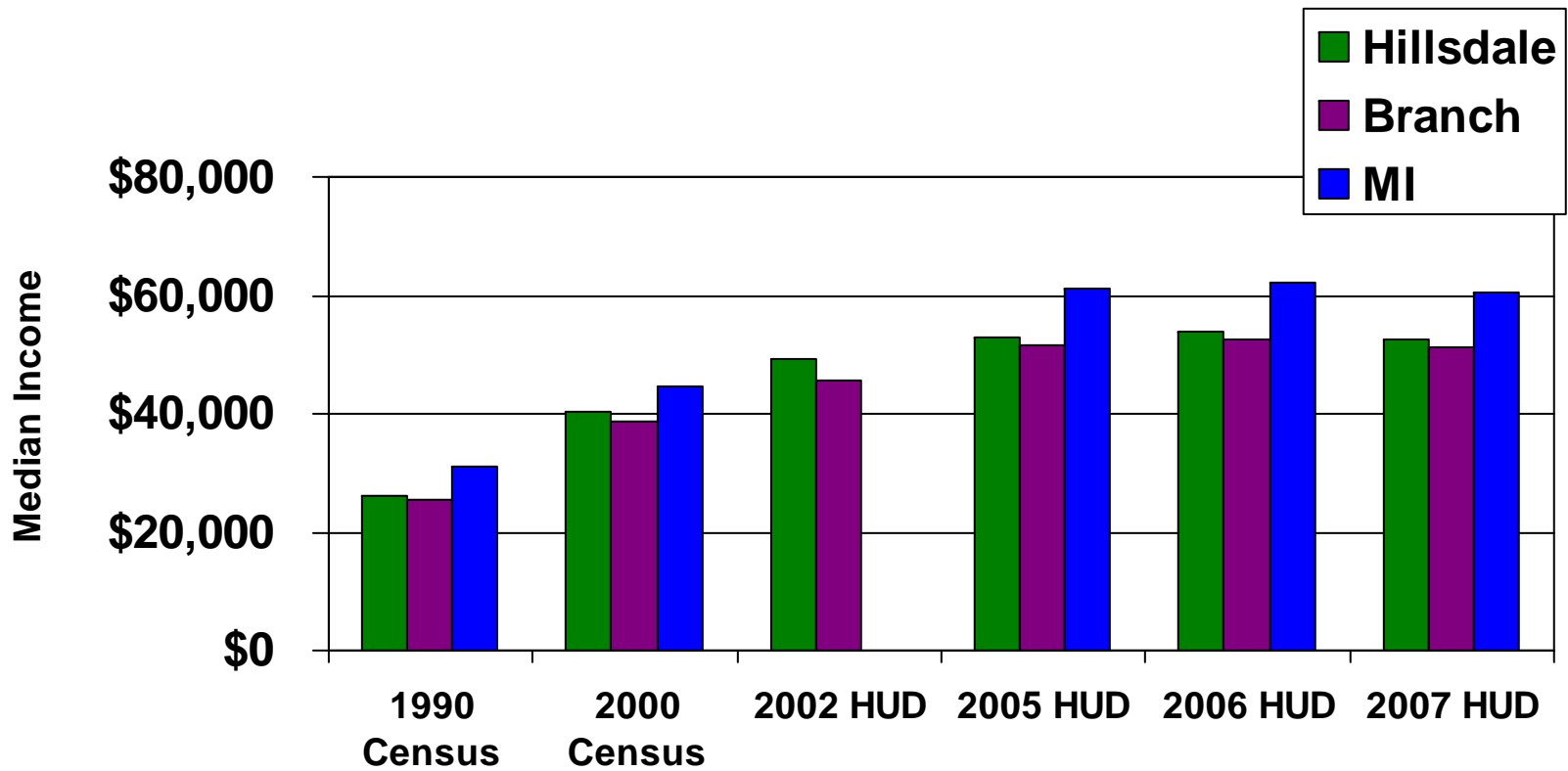


Economics 101



Median Family Income

Source: US Census 1990/2000/2002/2005-07
HUD Datasets

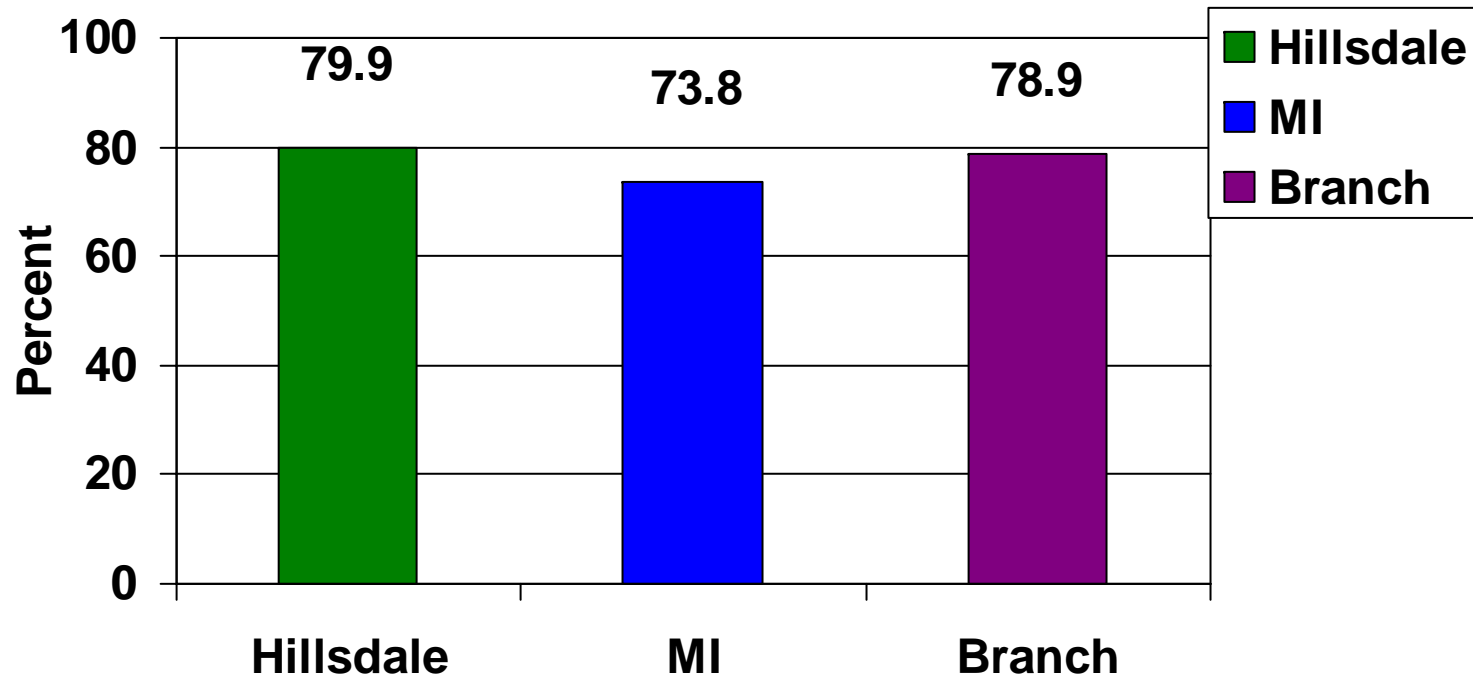




Home Ownership Hillsdale, Branch and Michigan

Source: FedStats.gov/ U.S. Census 2000

Formula: Owner occupied units / total occupied units





Median Value of Owner Occupied Housing

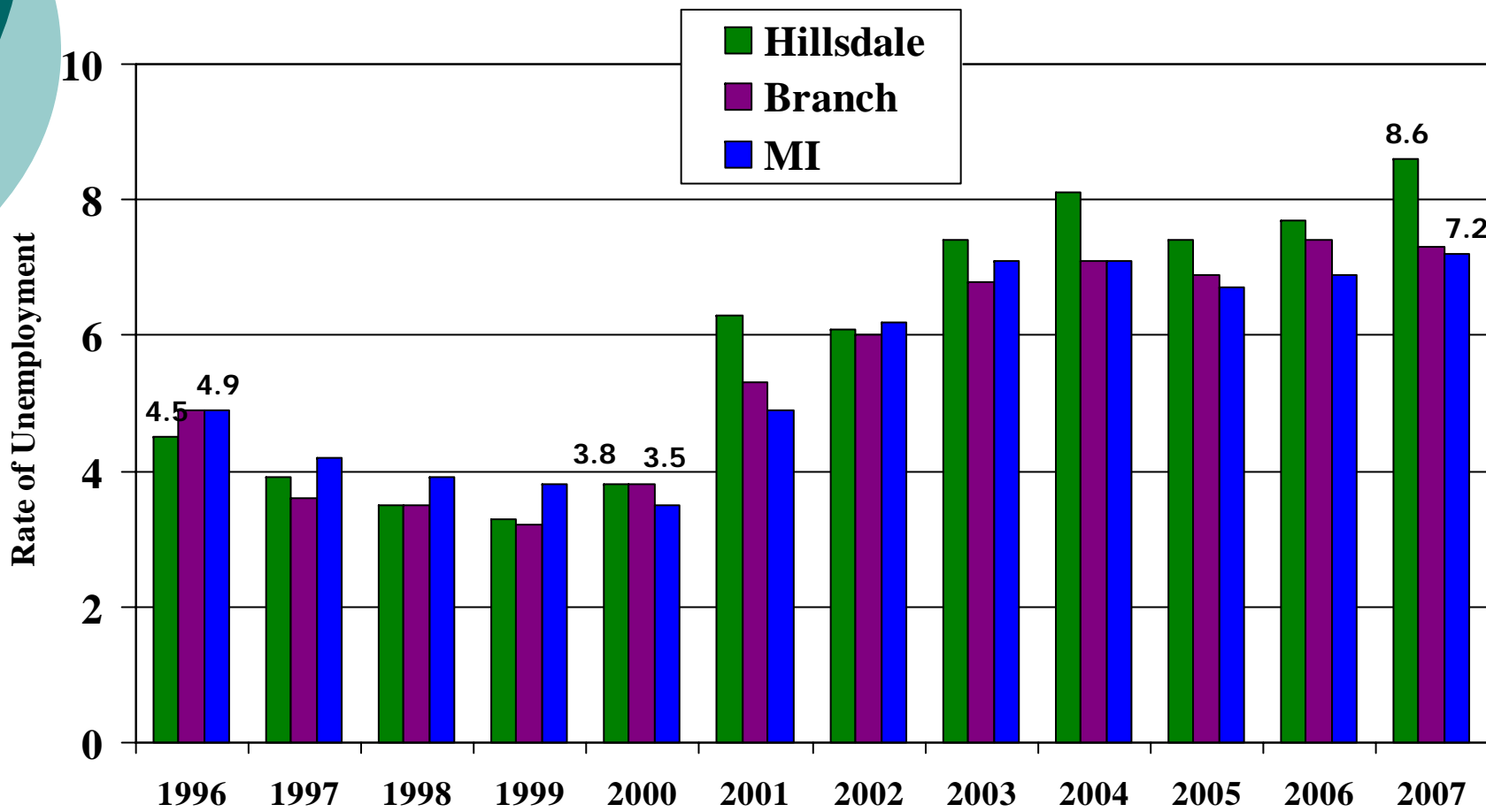
Source: US Census

- Hillsdale \$85,800
- Branch \$85,000
- Lenawee \$109,500
- Jackson \$96,900
- Calhoun \$81,000
- Kalamazoo \$108,000
- Michigan \$115,600

Unemployment rates

Average, non-seasonally adjusted
1996-2007

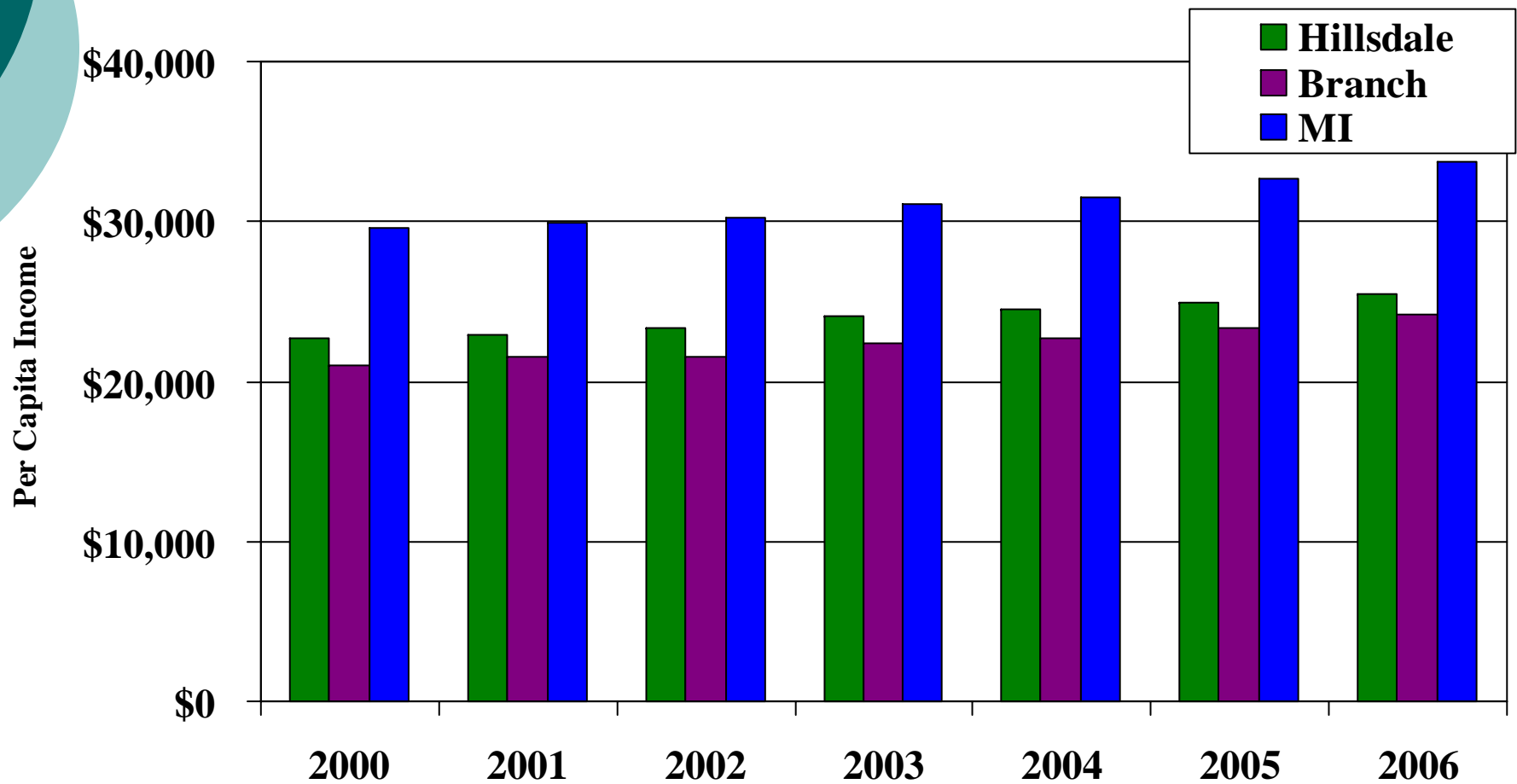
Source: U.S. Bureau of Labor Statistics



Per Capita Income Estimates

Hillsdale, Branch Counties, and MI, 2000-2006

Source: U.S. Dept. of Commerce, Bureau of Economic Analysis





Poverty estimates

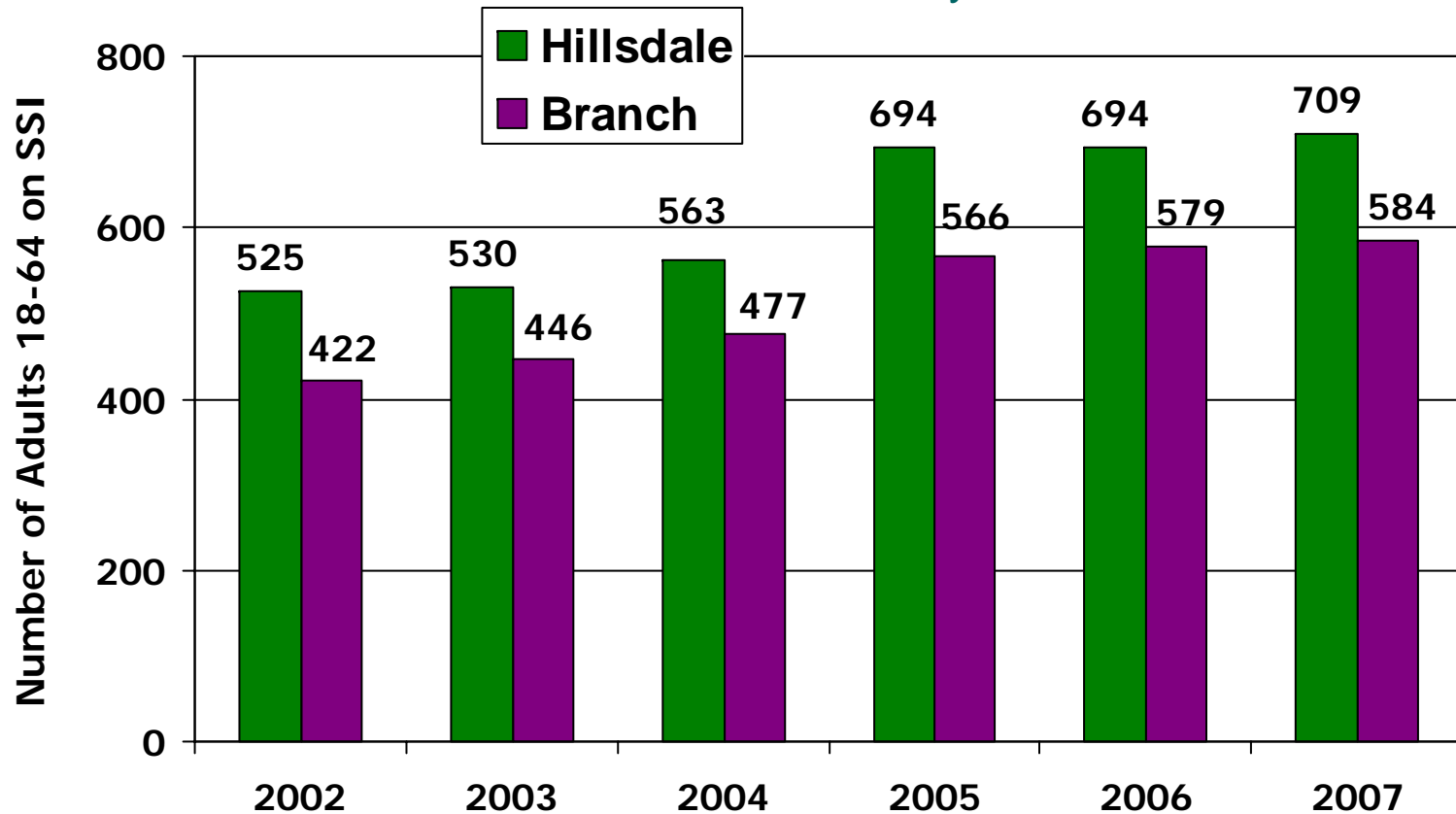
Hillsdale, Branch, MI - All ages

Source: U.S. Census – Small Area Income & Poverty Estimates

	<u>1990</u>	<u>2000</u>	<u>2003</u>	<u>2005</u>
Hillsdale	12.8 %	8.2%	10.1%	14.2%
Branch	14.1%	9.4%	11.1%	13.0%
Michigan	13.2%	10.5%	11.0%	13.1%

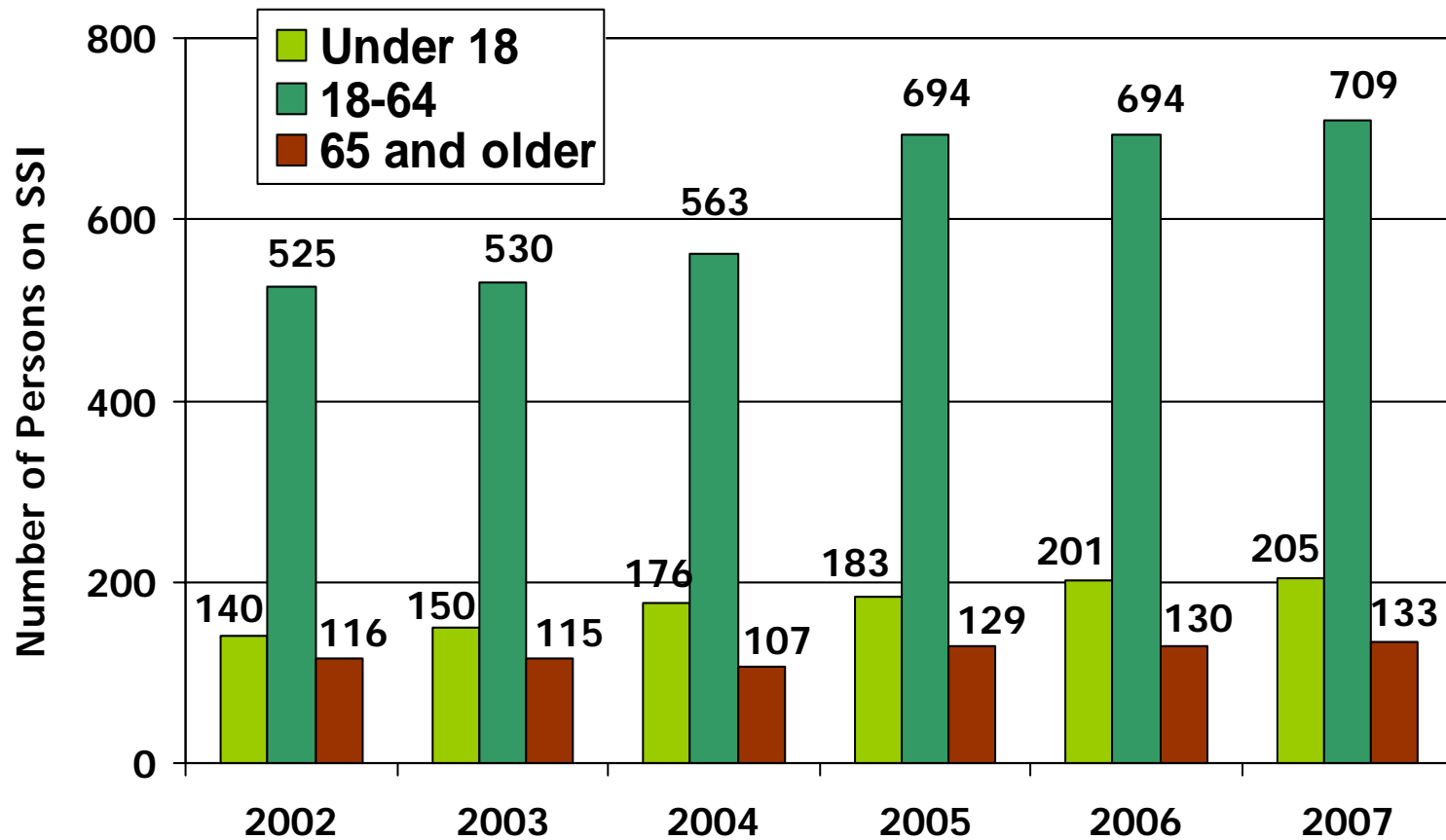
Number of Adults 18-64 on SSI Hillsdale and Branch Counties

Source: Social Security website



Number of Persons on SSI by age group - Hillsdale County

Source: Social Security website





Housing Units Available

Hillsdale, Branch, MI – 2000, 2006

Source: US Census Bureau

	Hillsdale	Branch
○ Housing Units 2000	20,189	19,822
○ Housing Units 2006	21,695	20,688
○ % Change	7.5%	4.4%
○ % Change for MI –		6.6%



Higher Education

Source: U.S. Census 2000

Bachelors Degree or Higher % of persons age 25+

○ Hillsdale Co.	12.0
○ Branch Co.	10.6
○ Lenawee Co.	16.3
○ Jackson Co.	16.3
○ Calhoun Co.	16.0
○ Kalamazoo Co.	31.2
○ Michigan	21.8

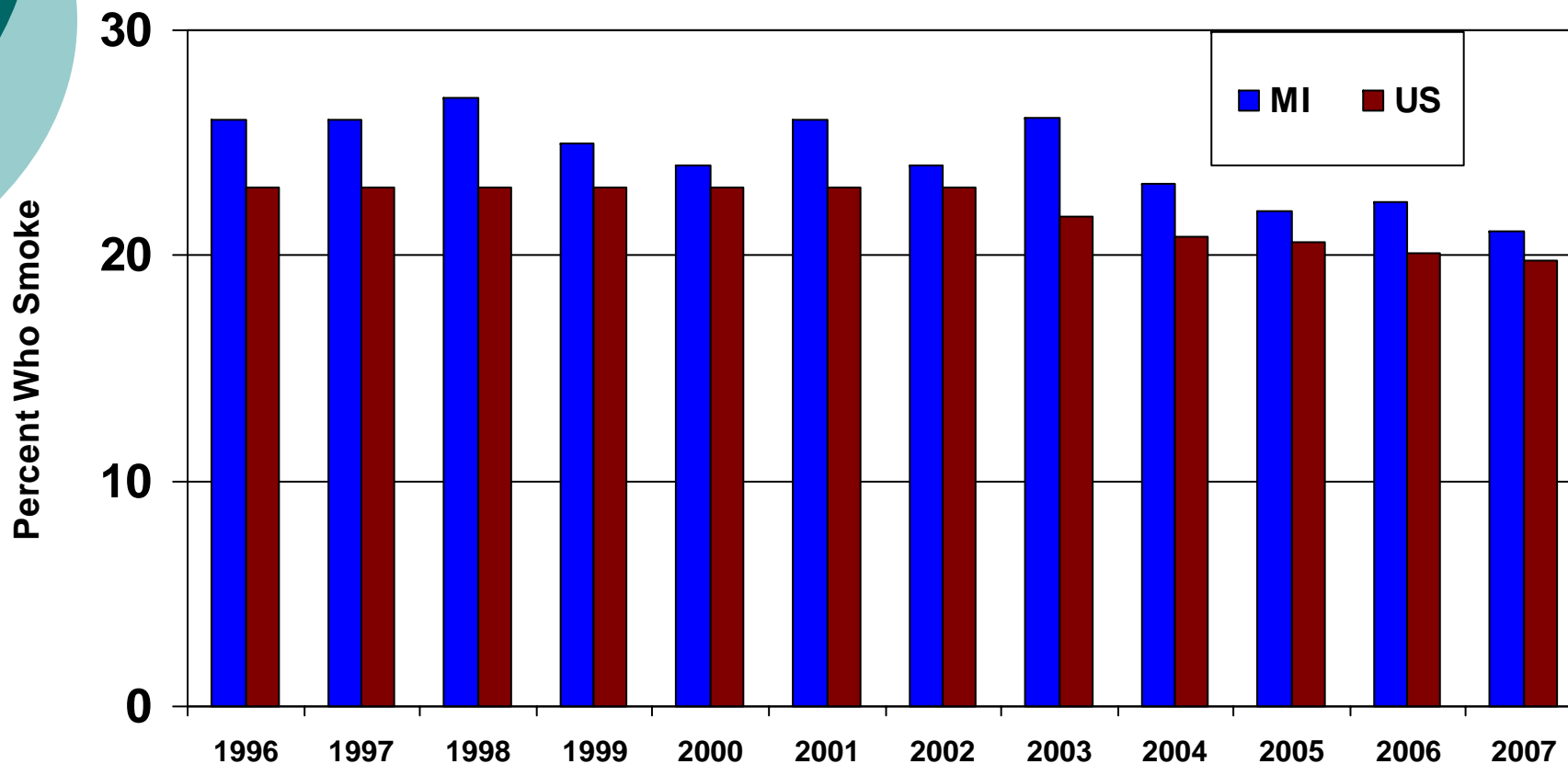
Healthy habits ??



Current smokers - Michigan vs. US

(Smoke everyday + smoke some days)

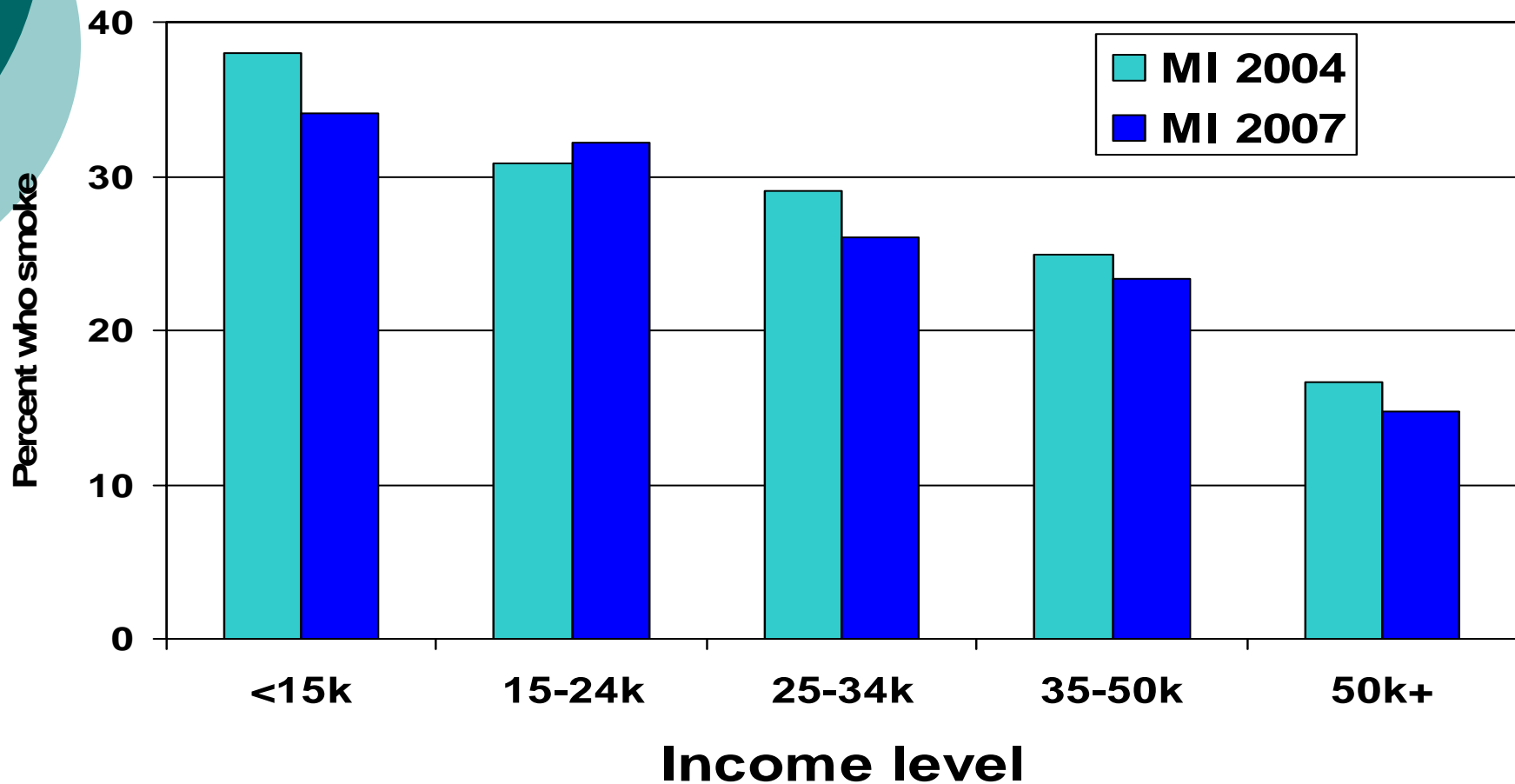
Source: Behavioral Risk Factor Surveillance System



Smoking (Current) vs. Income level

Michigan 2004 v.2007

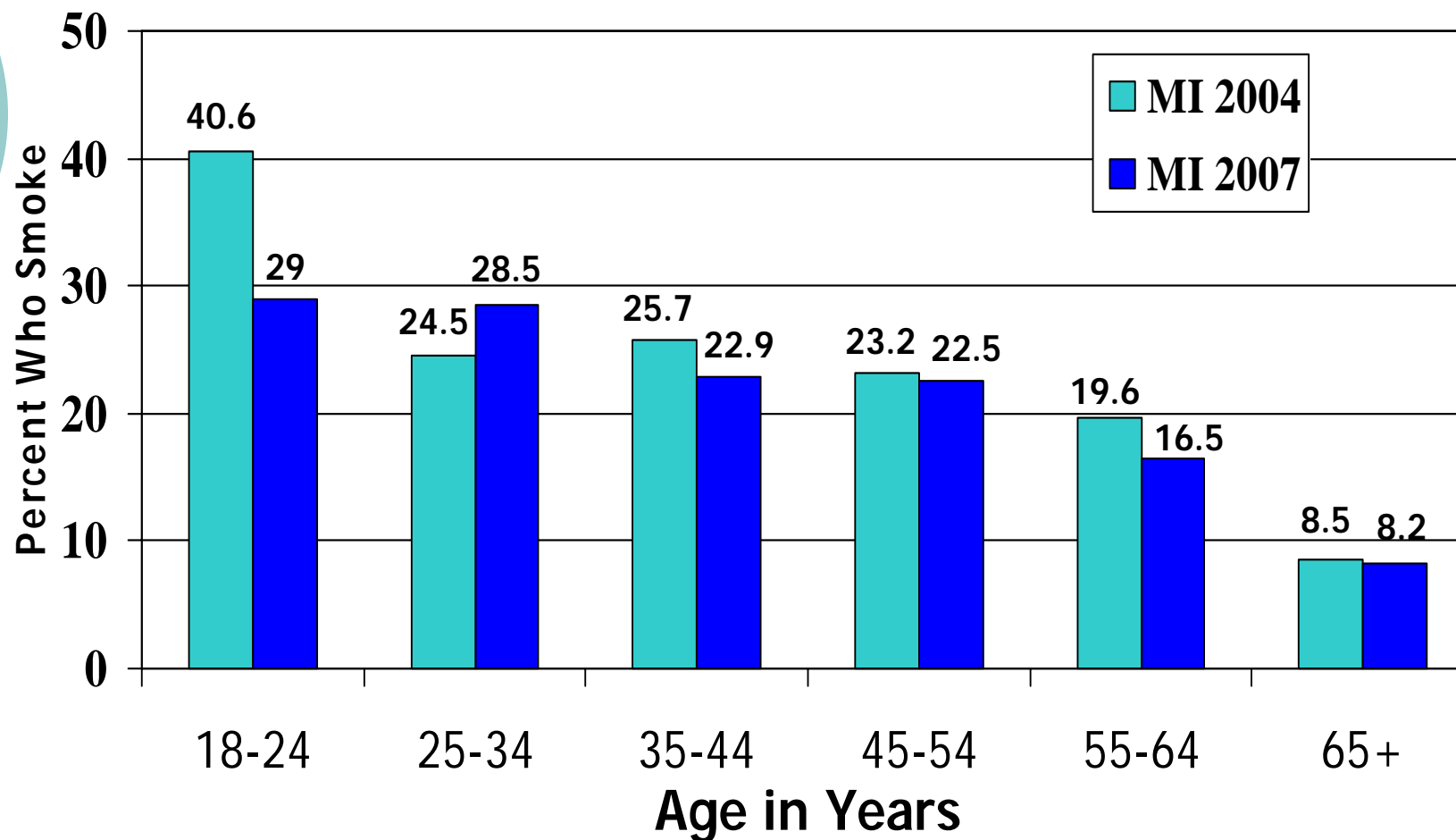
Source: Behavioral Risk Factor Surveillance System 2004 vs. 2007



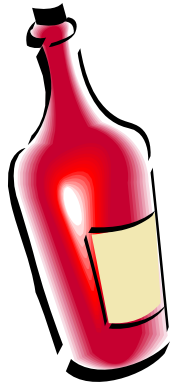
Smoking trends by age group – Michigan

Smoke everyday

Source: Behavioral Risk Factor Survey – 2004 vs. 2007

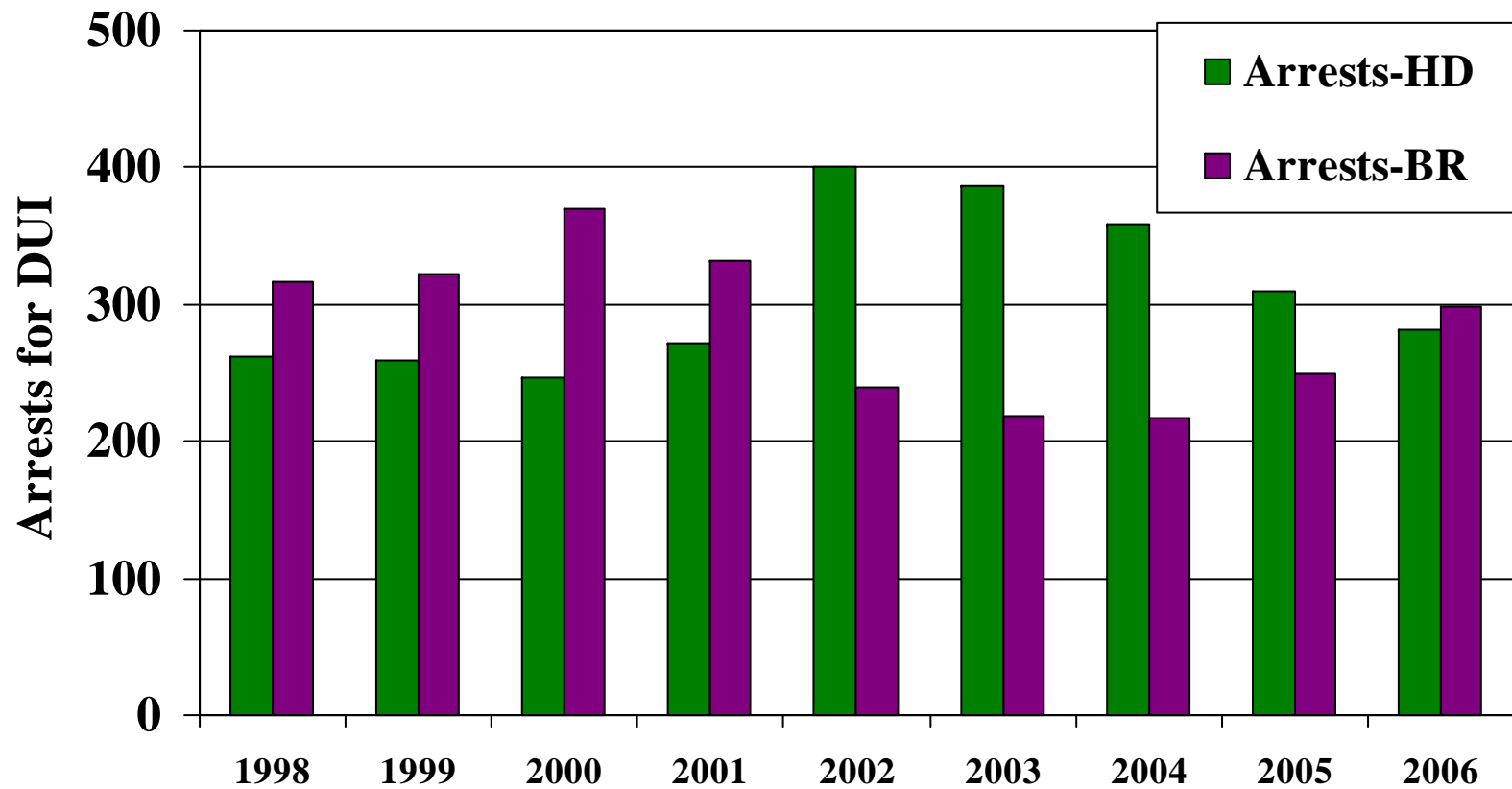


Alcohol and Drugs



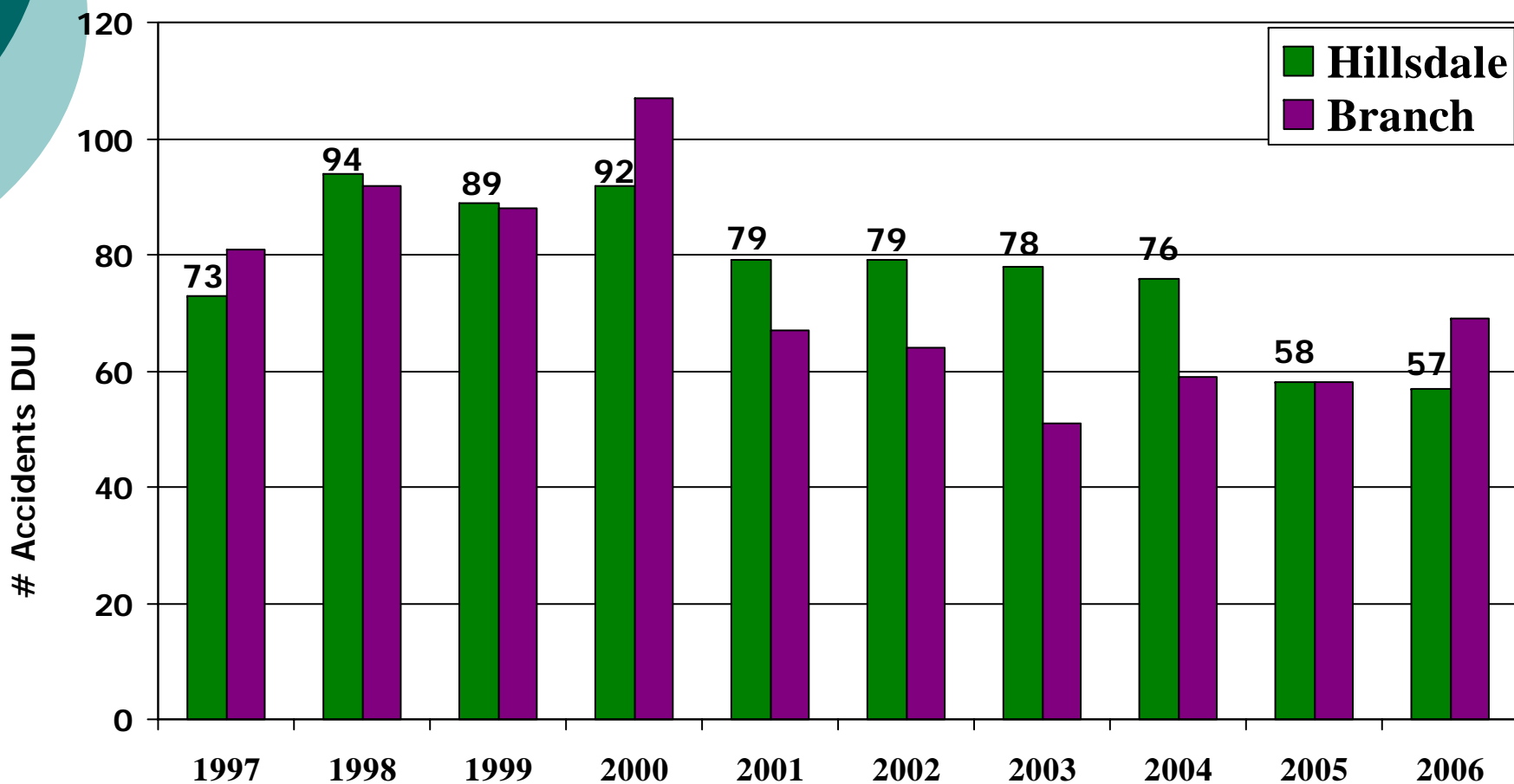
Offenses and arrests for DUI (Alcohol or narcotics) Hillsdale and Branch County 1998-2006

Source: MSP Uniform Crime Report



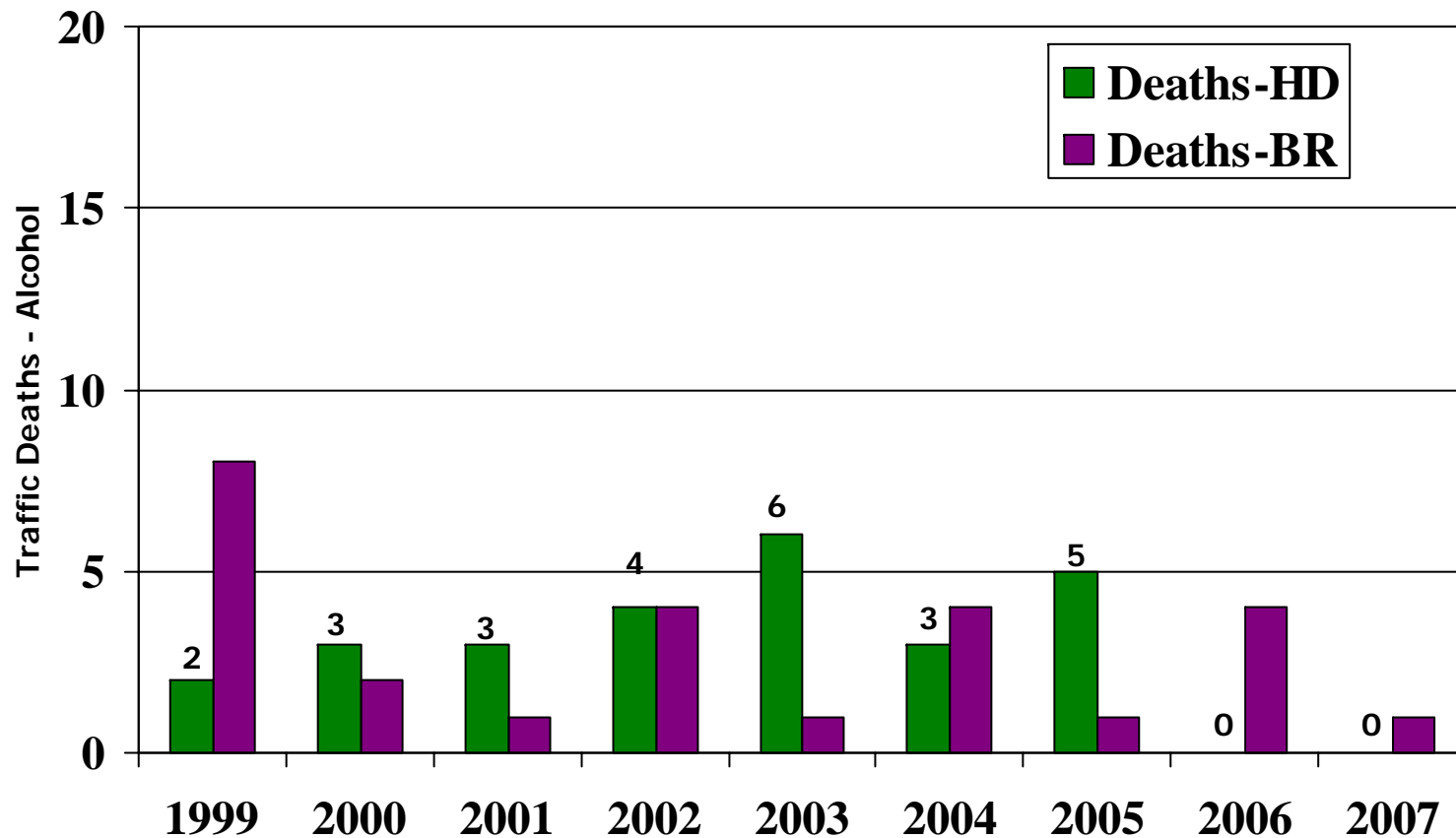
Motor Vehicle Accidents involving driving when impaired, Hillsdale County vs. Branch County 1997-2006

Source: Michigan Traffic Crash Facts



Number Killed in motor vehicle accidents (alcohol involved) Hillsdale, Branch County 1999-2007

Source: Michigan State Police Traffic Crash Facts



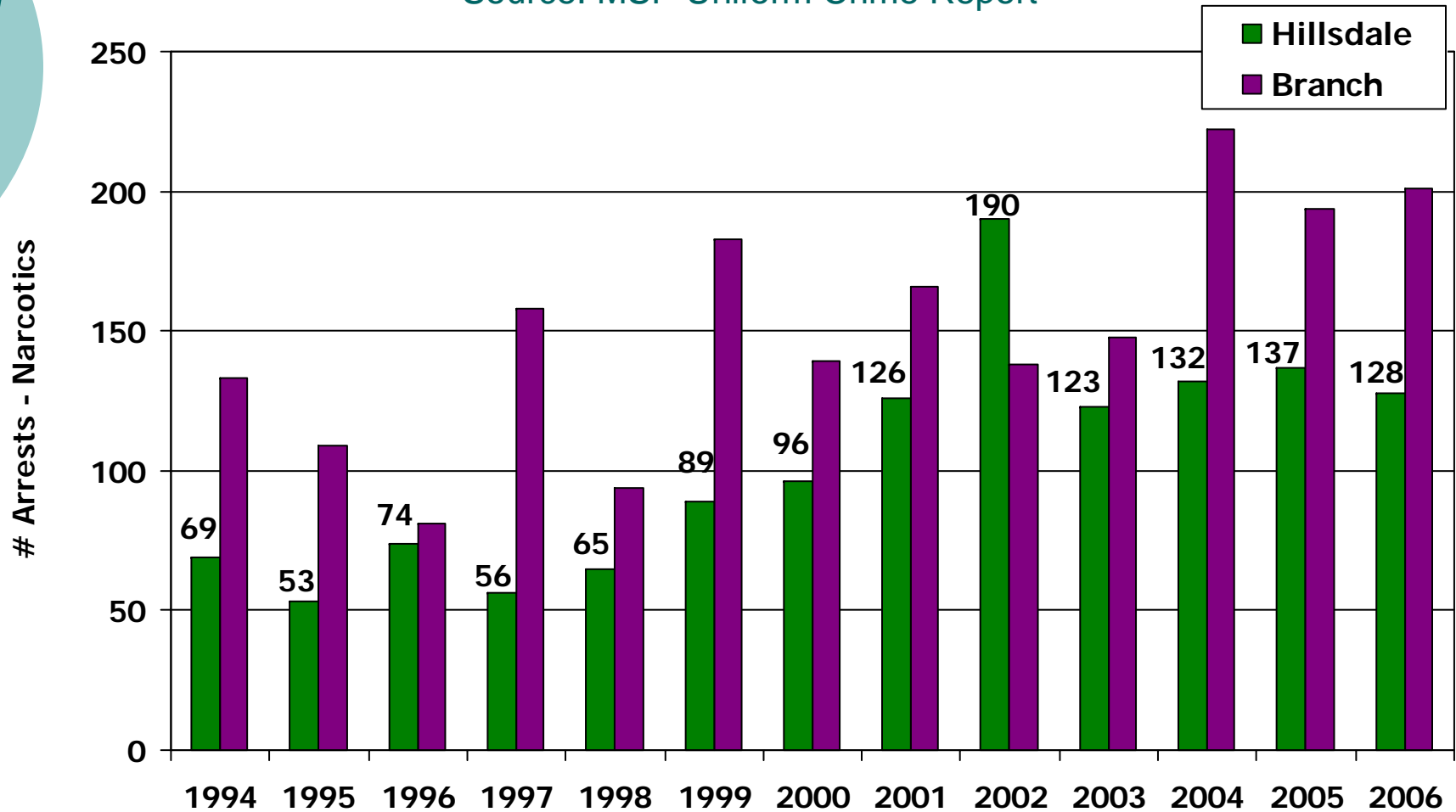
Crime



Offenses and Arrests for Narcotic Law Violations

Hillsdale, Branch County - 1994 to 2006

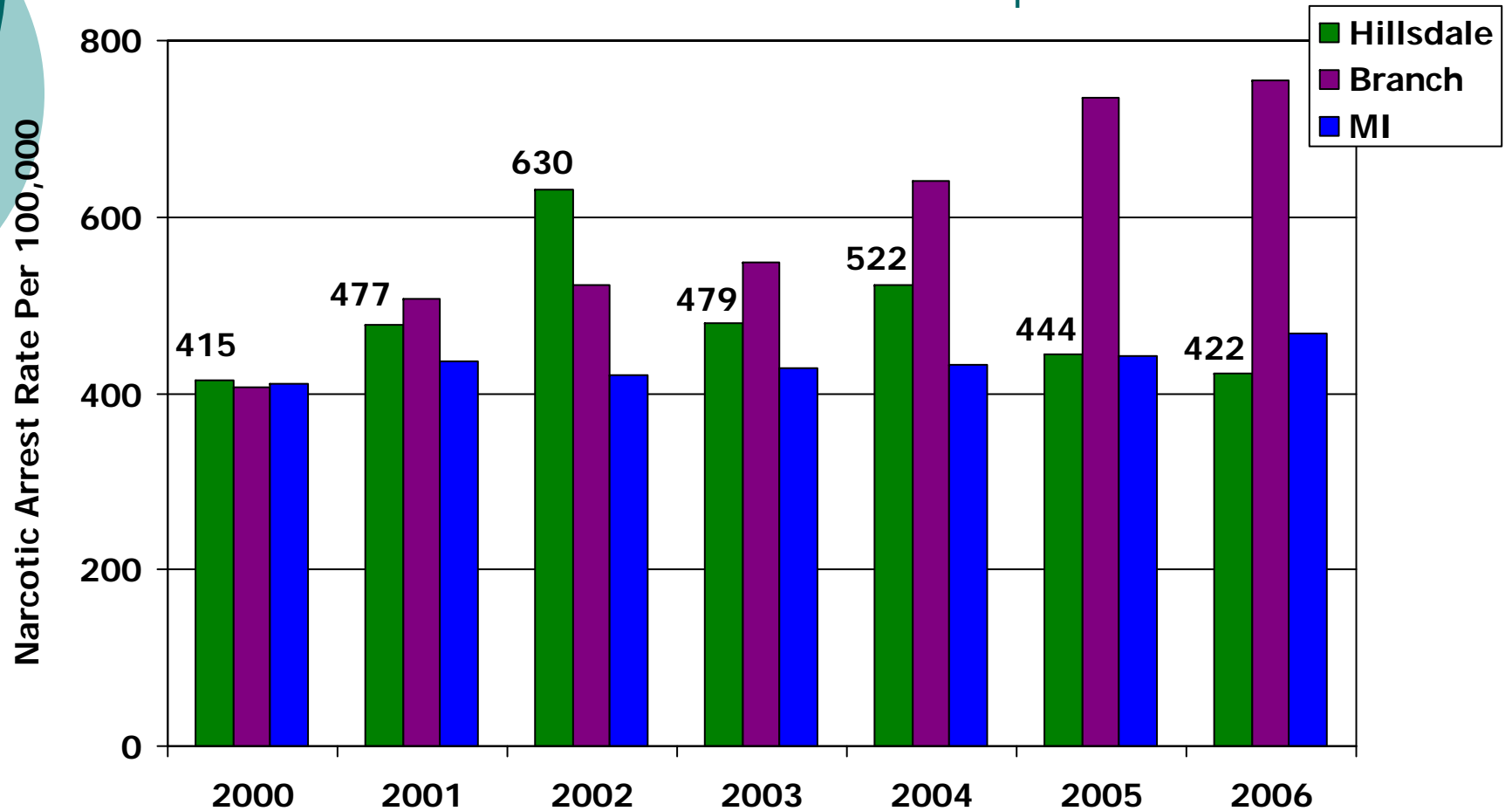
Source: MSP Uniform Crime Report



Narcotic Offense Rate Per 100,000

Hillsdale, Branch & MI, 2000-2006

Source: MSP Uniform Crime Reports





Index Crimes Arrest Rate Per 100,000

5 year average (2002-2006)

Hillsdale, Branch Counties and Michigan

Source: Michigan State Police Uniform Crime Reports

Crime	BR <u>Rate</u>	HD <u>Rate</u>	MI <u>Rate</u>
Murder	.4	.9	6.4
Rape	<u>80.1</u>	73.4	53.8
Robbery	6.0	12.8	122.2
Aggr. Assault	184	149.3	346.2
Burglary	486.9	537.9	685.7
Larceny	1813.1	1340.7	1965.3
MV Theft	121.1	110.1	496.3
Arson	28.8	18.3	38
Total	2721	2243	3714

Non-Index Crimes Arrest Rate per 100,000

5-Year average (2002-2006)

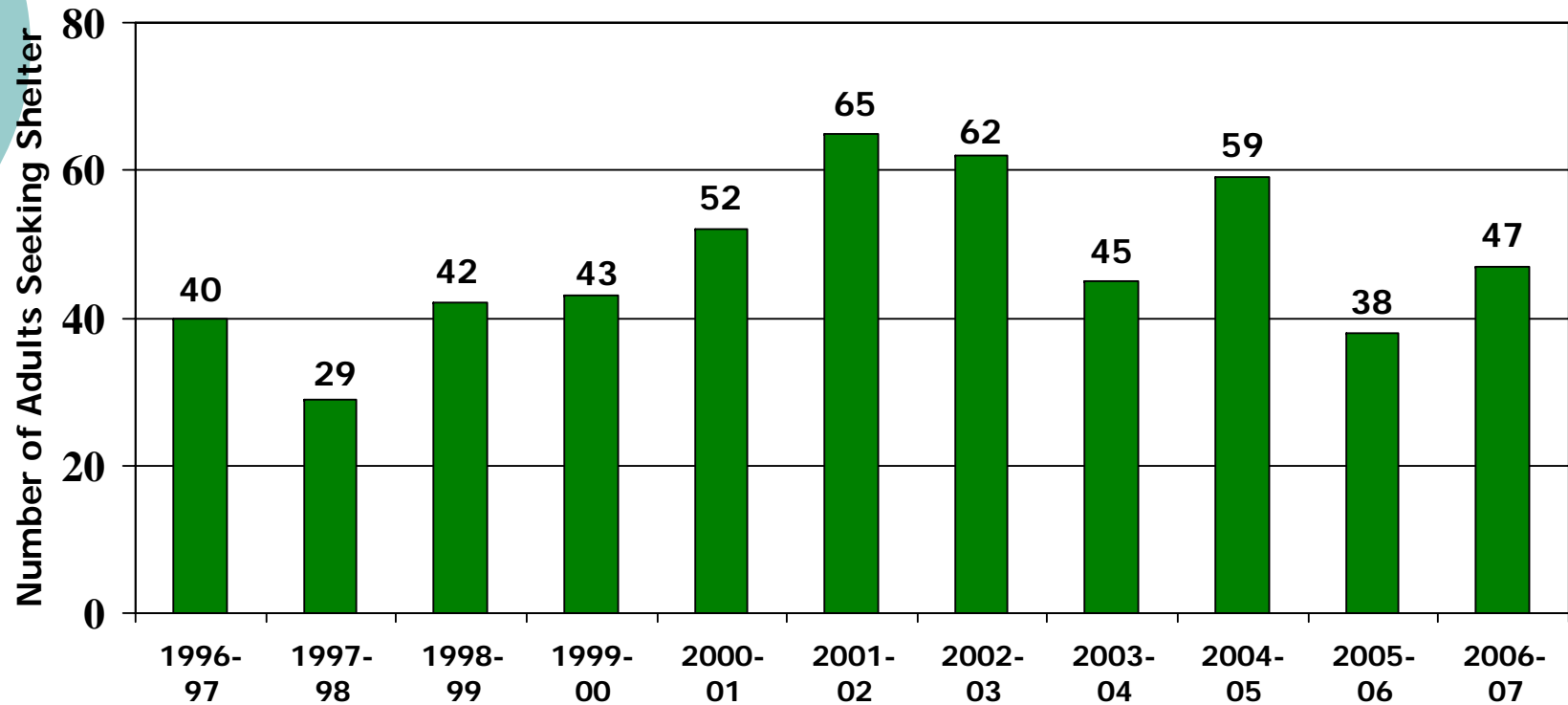
Hillsdale, Branch Counties and Michigan

Source: Michigan State Police Uniform Crime Reports

	BR <u>Rate</u>	HD <u>Rate</u>	MI <u>Rate</u>
Neg.Manslaughter	1.3	1.3	1.0
Non-aggr. Assault	1139.6	1320.3	1240.6
Forgery	52.2	71.7	69.5
Fraud	328.3	609.9	419.3
Embezzlement	43.5	33.7	41
Stolen Property	26.3	27.7	56.7
Vandalism	947.8	1022.9	969
Weapons	26.7	26.9	44.7
Sex Offenses	146.5	125.4	102.3
Narcotic Laws	639.1	500	438
Family&Children	200.6	317.4	77.3
DUI	643.7	750.7	506.7
Liquor Laws	274.9	244.5	197.4
Disord. Conduct	597	581	565.3

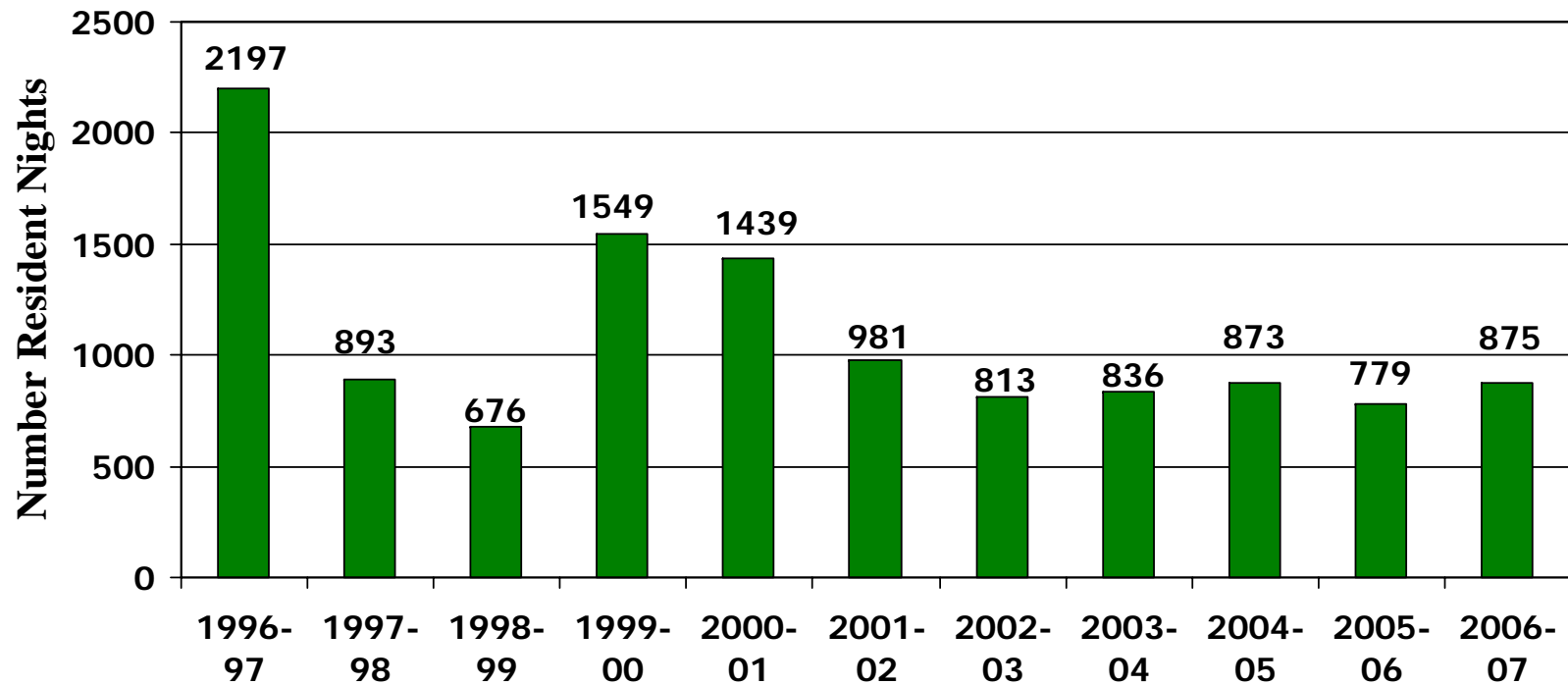
Number of Adults in Hillsdale seeking shelter for domestic violence 1996-2007

Source: Domestic Harmony

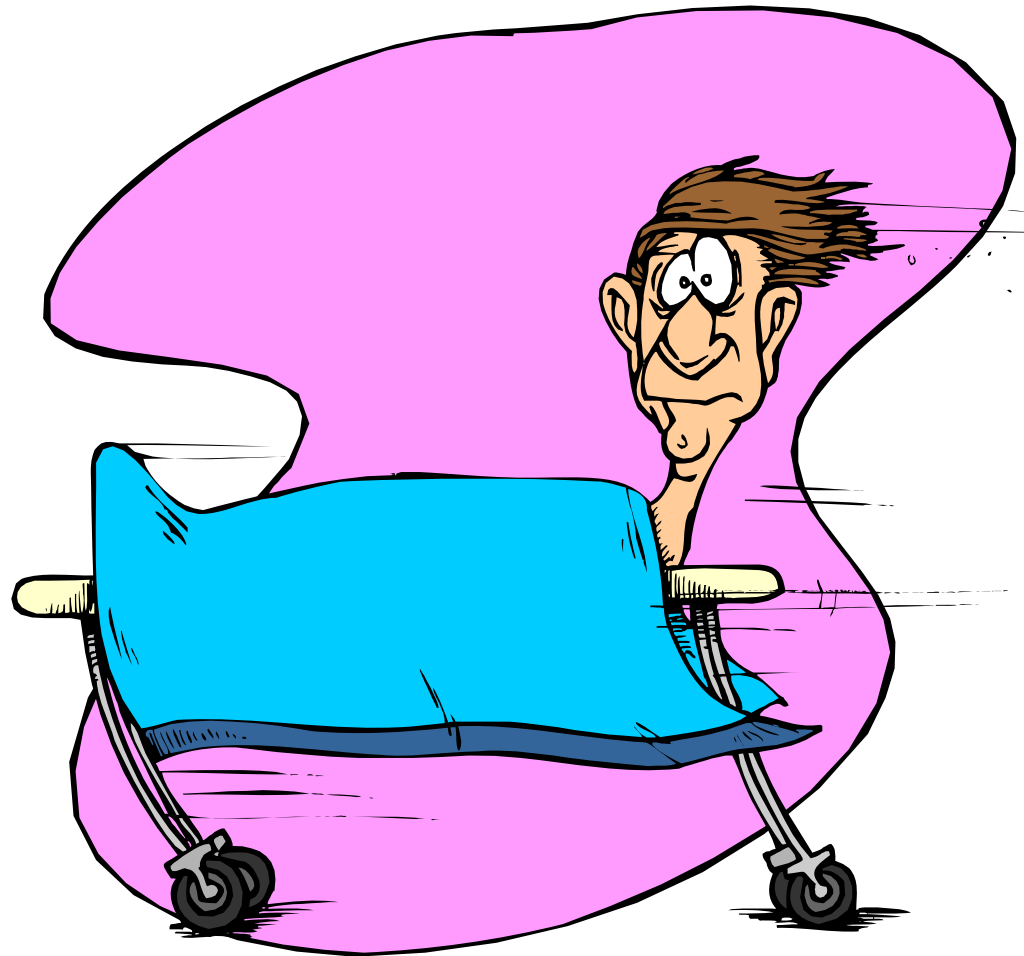


Number of Adult Resident Nights provided by Domestic Violence Shelter 1996-2007

Source: Domestic Harmony



Hospitalization and Mortality



Hospitalizations Rate Per 10,000 Leading Diagnoses – 2006 Persons Ages 18-44

(Michigan rank used)

Source: Michigan Department of Community Health

Hospitalizations

	HD	BR	MI
	Rates	Rates	Rates
1. Females/delivery	296.2	330.5	324.3
2. Injury/Poisoning	50.7	42.1	65.2
3. Psychoses	49.0	53.2	64.0
4. Heart Disease	26.0	32.2	26.8
5. Skin and Subq. Tissue Diseases	5.3	19.3	17.4
6. Intervertebral disk disorders	18.9	11.7	15.4
7. Infectious and Parasitic Disease	8.3	8.2	14.8
8. Neoplasms (benign and unspec.)	10.0	14.0	14.2
9. Diabetes	7.7	8.2	12.6
10. Appendicitis	10.6	7.6	10.9
11. Asthma	4.1	9.9	10.0
12. Chest Pain	4.1	12.3	9.8
13. Cancer (Malignant Neoplams)	7.7	8.8	9.6

Hospitalizations Rate Per 10,000

Leading Diagnoses – 2006

Persons Ages 45-64

(Michigan rank used)

Source: Michigan Department of Community Health

<u>Hospitalizations</u>	<u>HD</u>	<u>BR</u>	<u>MI</u>
1. Heart Disease	254.5	255.2	200.1
2. Injury/Poisoning	110.2	102.6	110.0
3. Psychoses	43.6	52.6	67.3
4. Cancer (malignant neoplasms)	60.0	73.8	65.9
5. Osteoarthritis	66.5	74.6	49.5
6. Chest Pain	17.8	34.8	38.3
7. Infectious and Parasitic Disease	33.2	37.3	37.6
8. Cerebrovascular Disease	38.4	40.7	35.9
9. Pneumonia	40.5	40.7	33.2
10. Diseases of the Skin and Tissue	28.4	23.7	31.9
11. Intervertebral Disc Disorders	23.5	21.2	27.1
12. Neoplasms (benign & Unspec.)	27.6	19.5	25.1
13. Chronic Bronchitis	23.5	44.9	25.0
14. Diabetes	-	17.0	22.0

Hospitalizations Rate Per 10,000 Leading Diagnoses – 2006 Persons Ages 65+

(Michigan rank used)

Source: Michigan Department of Community Health

<u>Hospitalizations</u>	<u>HD</u>	<u>BR</u>	<u>MI</u>
1. Heart Disease	843.9	798.9	788.1
2. Injury/Poisoning	323.2	287.0	299.8
3. Cerebrovascular Disease	166.1	167.4	188.1
4. Pneumonia	215.5	200.9	176.6
5. Cancer (malignant neoplasm)	142.2	173.8	171.9
6. Infectious and Parasitic Disease	119.7	154.7	156.2
7. Osteoarthritis	194.5	167.4	148.6
8. Rehabilitative Care	43.4	76.5	132.7
9. Chronic Bronchitis	113.7	205.7	103.9
10. Diseases of the Arteries & Capillaries	79.3	62.2	78.0
11. Kidney/Urinary Infections	49.4	74.9	74.4
12. Chest Pain	35.9	68.6	72.1
13. Diseases of the Skin/Tissue	43.4	62.2	60.4
14. Psychoses	35.9	41.5	56.7



Leading Causes of Death Rate per 100,000 (crude)

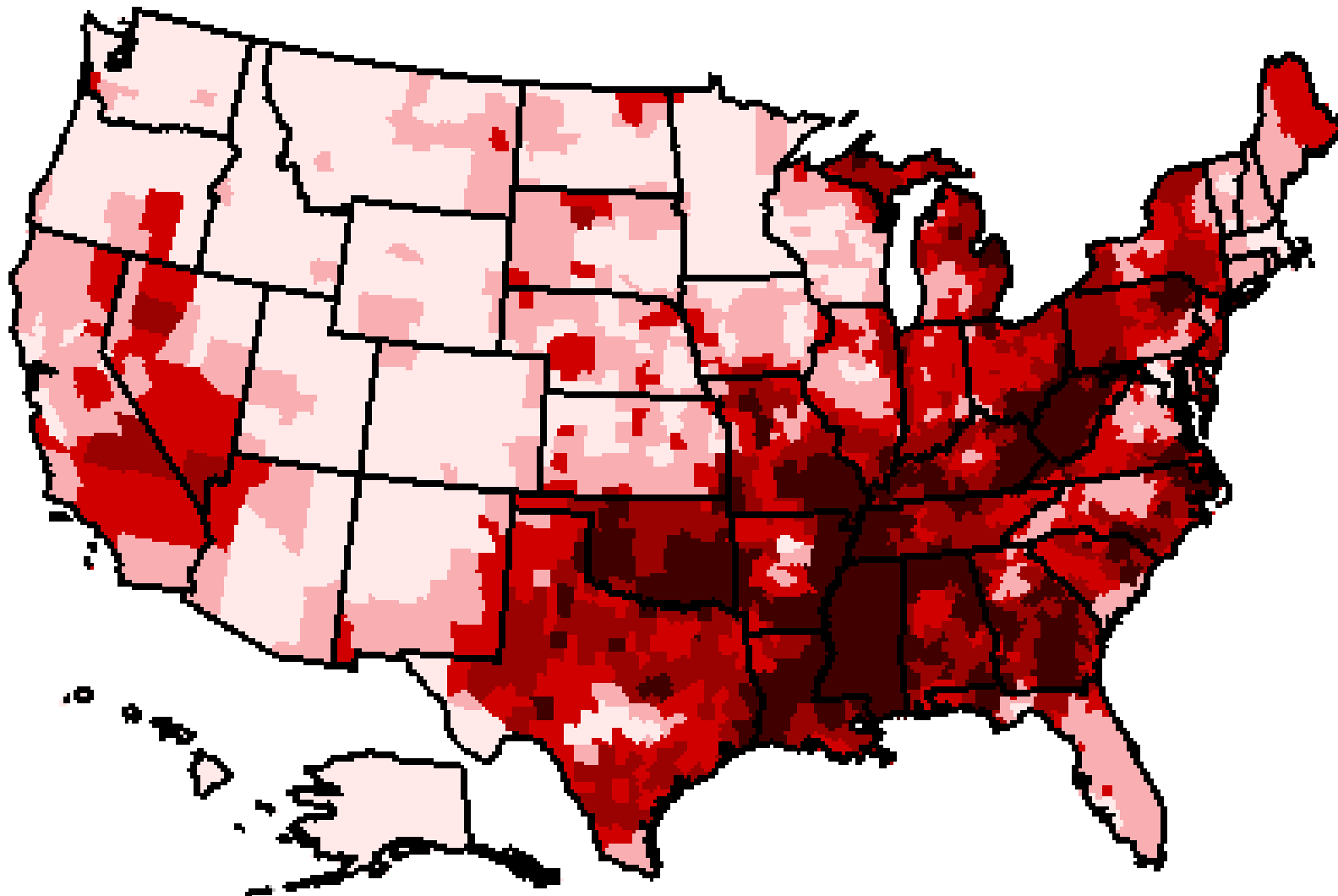
Hillsdale, Branch Counties, and Michigan, 2006

Source: 2001 Resident Death File

<u>Cause</u>	<u>HD Rate</u>	<u>BR Rate</u>	<u>MI Rate</u>
Heart Disease	290.2	235.4	239.9
Cancer	199.1	224.5	199.7
Stroke	59.3	61.0	47.0
Unintentional Injuries	36.0	48.0	35.2
Chronic Lower Respiratory	42.4	28.3	44.3
Diabetes	25.4	48.0	28.0
Alzheimer's	12.7	24	23.1
Pneumonia or Influenza	14.8	17.4	16.6
Kidney Disease	*	15.3	15.8
Suicide	*	*	11.2

Rates of Death due to diseases of the Heart

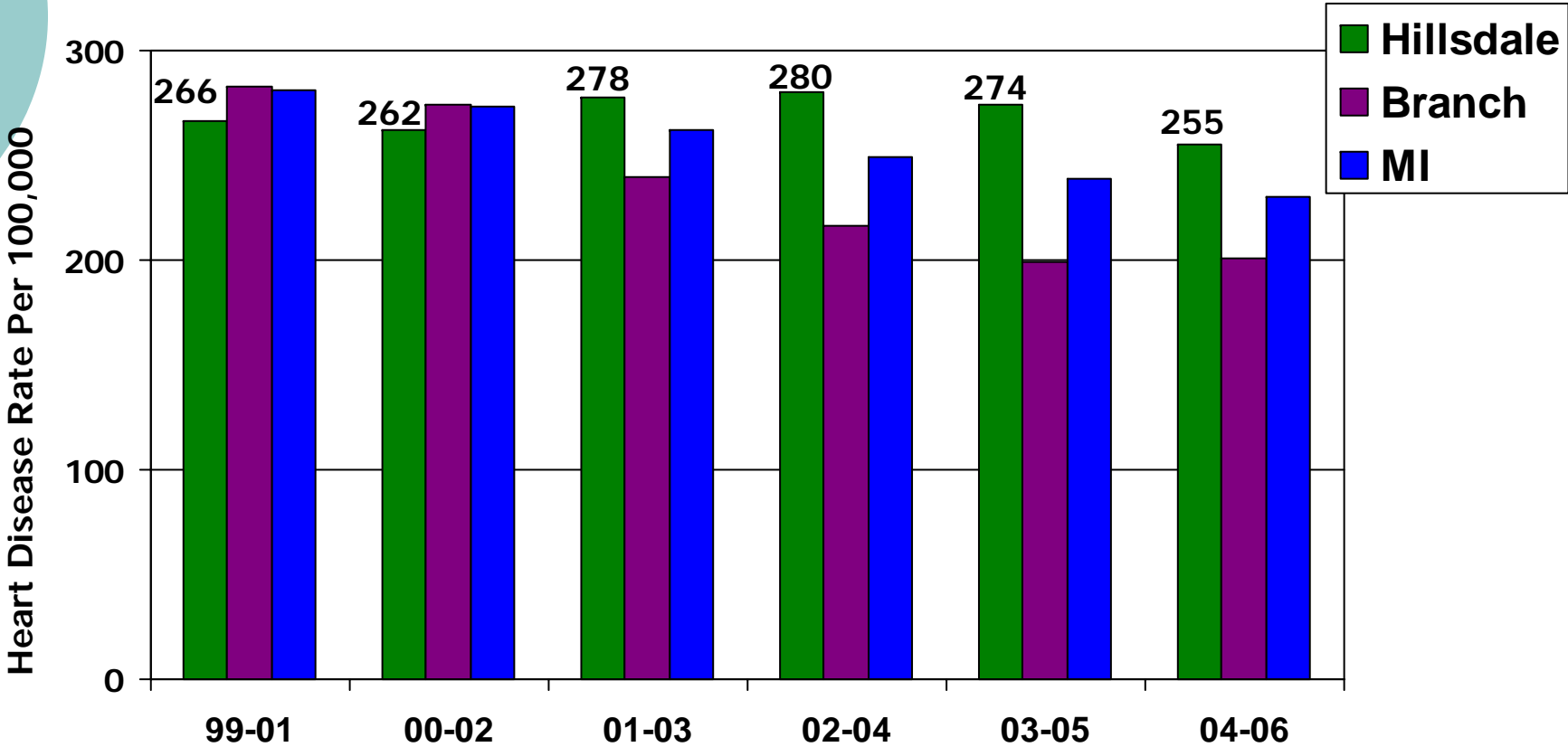
Source: CDC 2000 U.S. death data



Heart Disease Deaths - All Ages

3 Year Averages – Rate Per 100,000

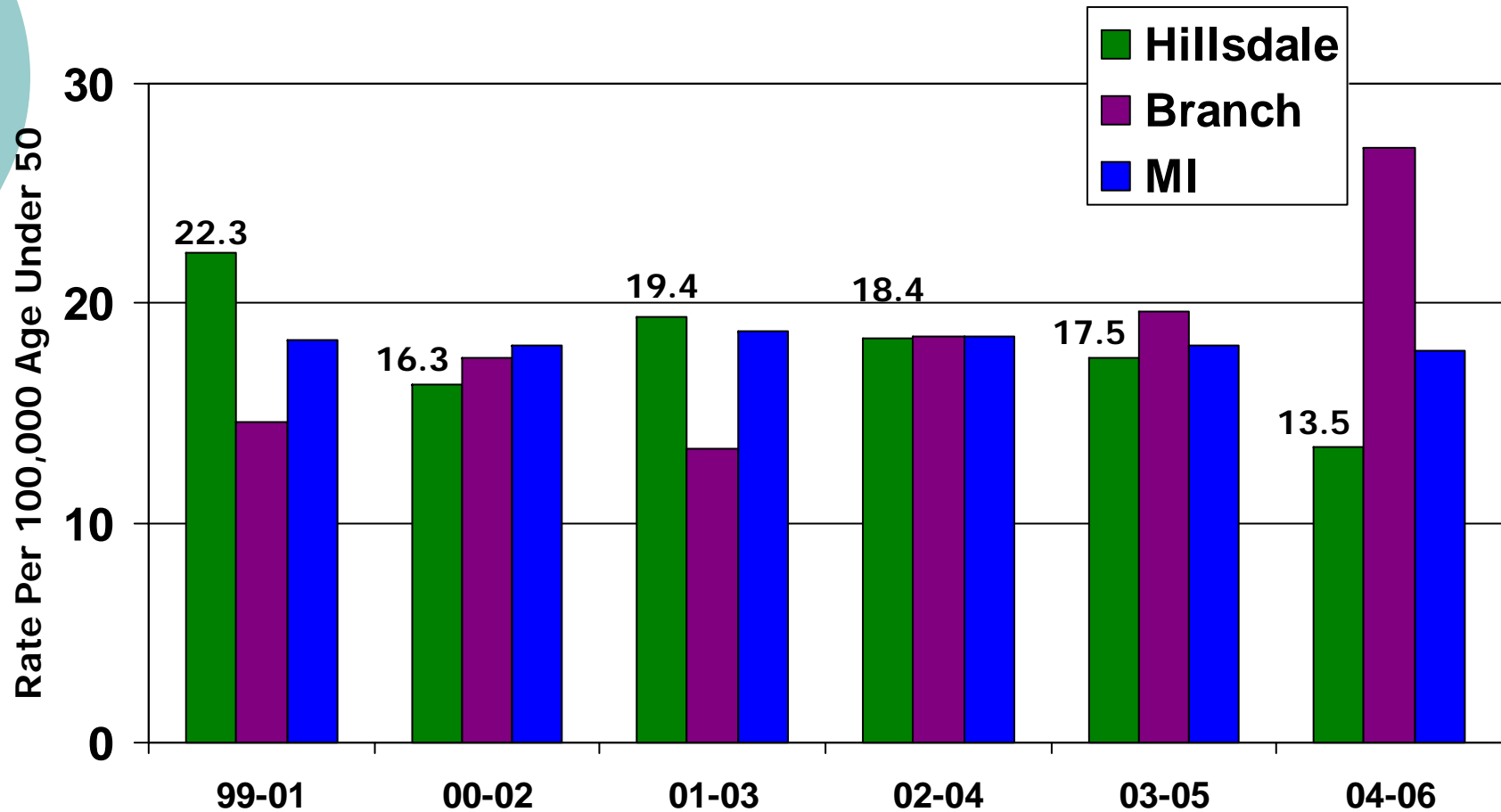
Source: Michigan Department of Community Health



Heart Disease Deaths – Age Under 50

3 Year Averages – Rate Per 100,000

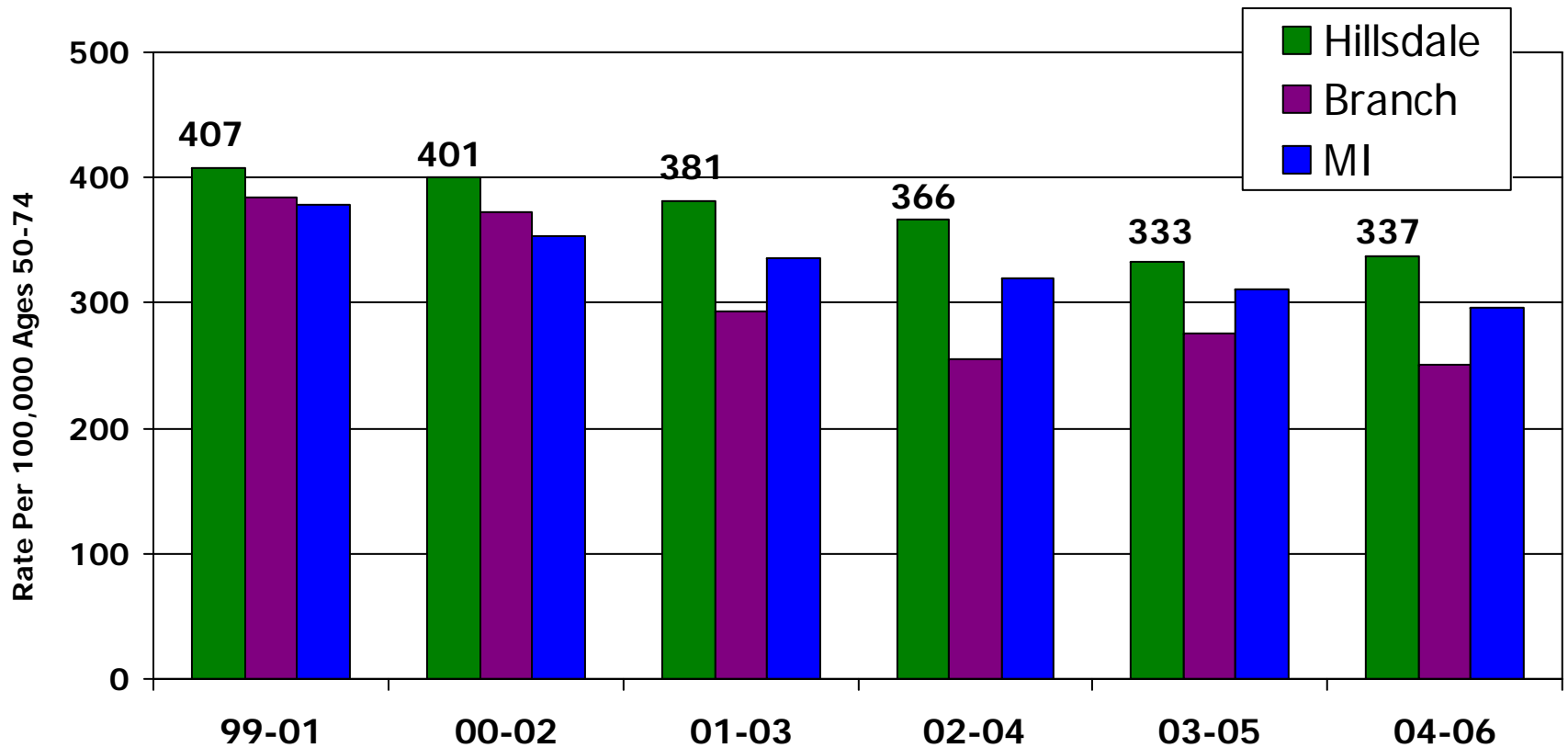
Source: Michigan Department of Community Health



Heart Disease Deaths – Ages 50-74

3 Year Averages – Rate Per 100,000

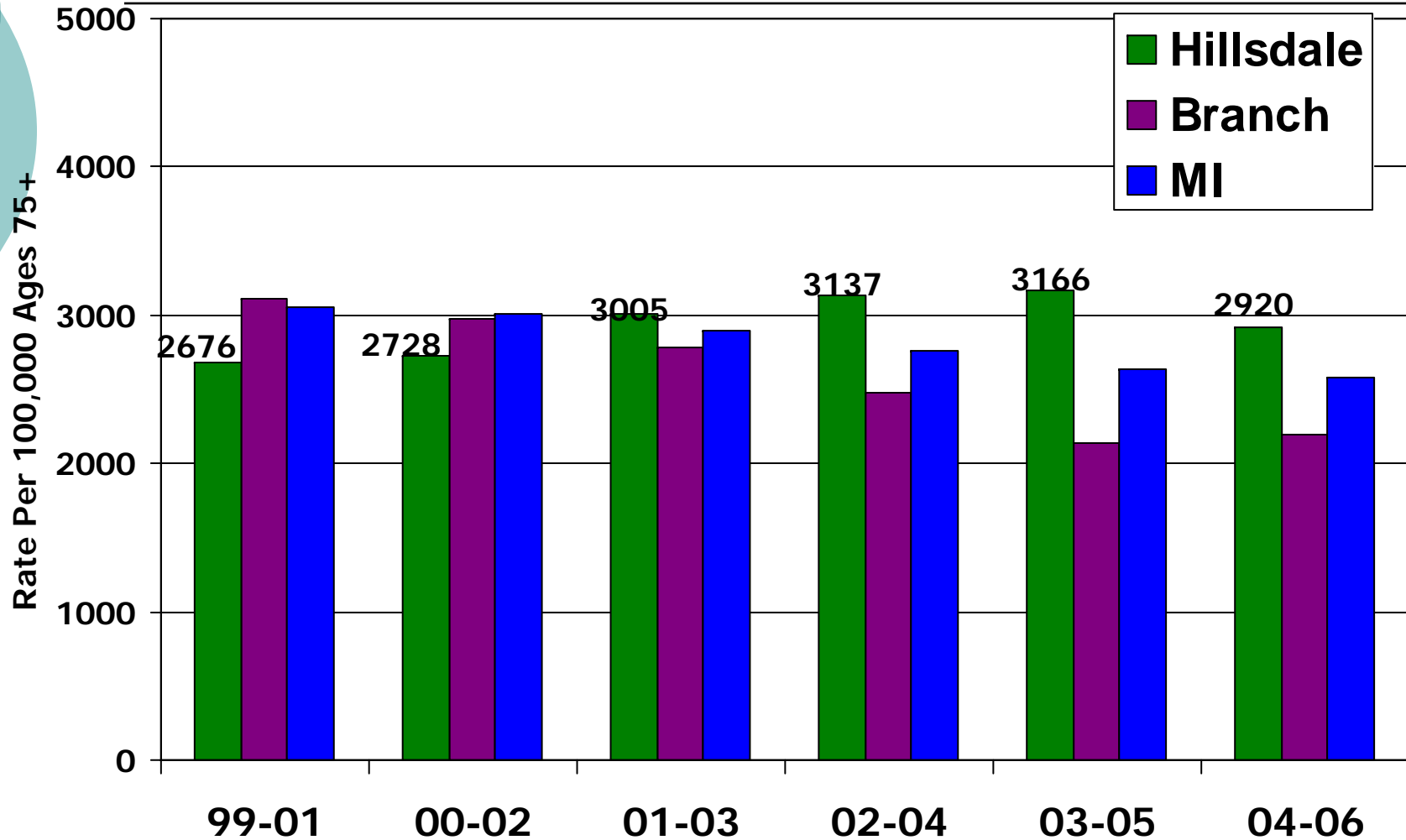
Source: Michigan Department of Community Health



Heart Disease Deaths – Ages 75+

3 Year Averages – Rate Per 100,000

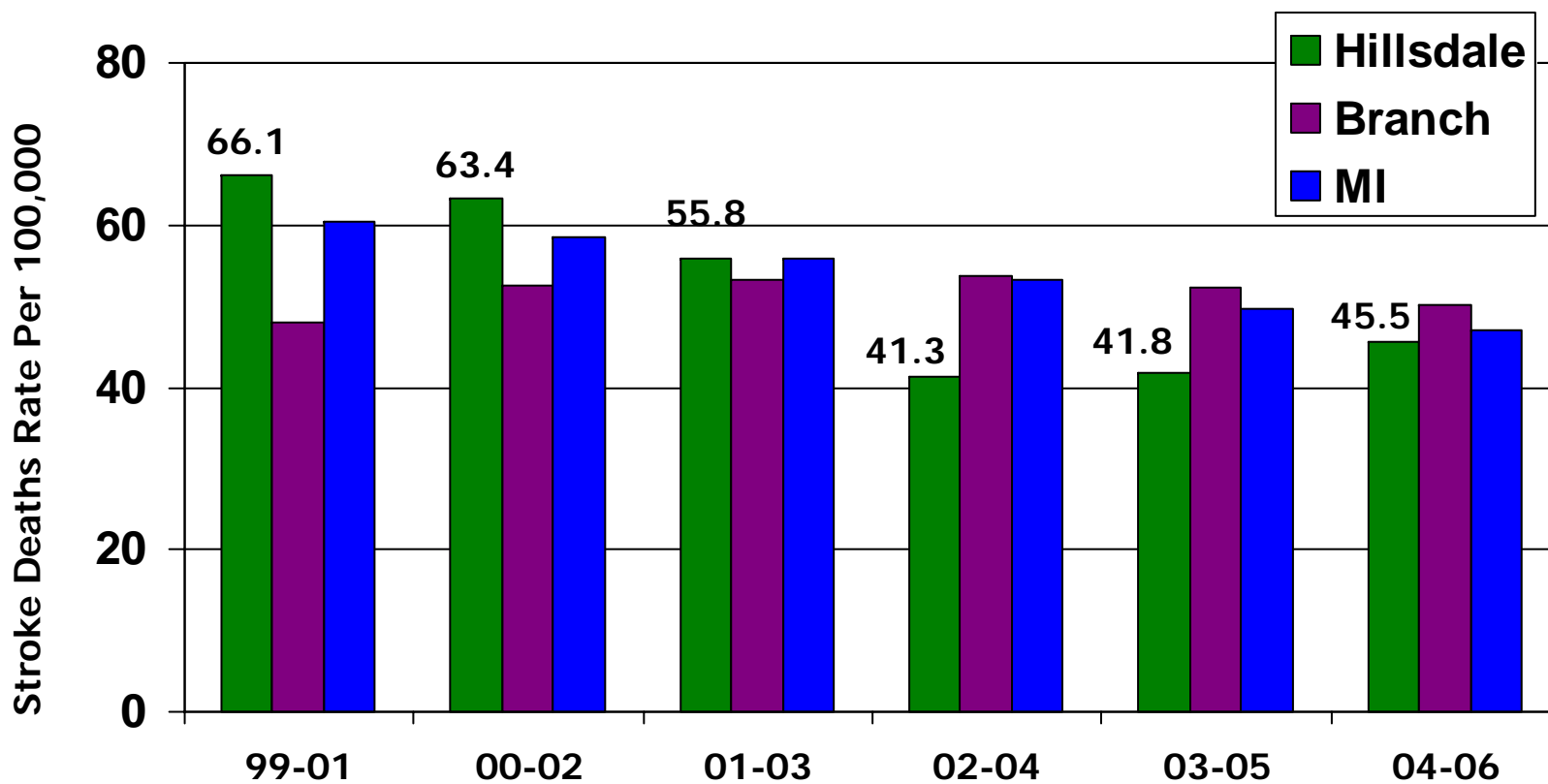
Source: Michigan Department of Community Health



Stroke Deaths – All Ages

3 Year Averages – Rate Per 100,000

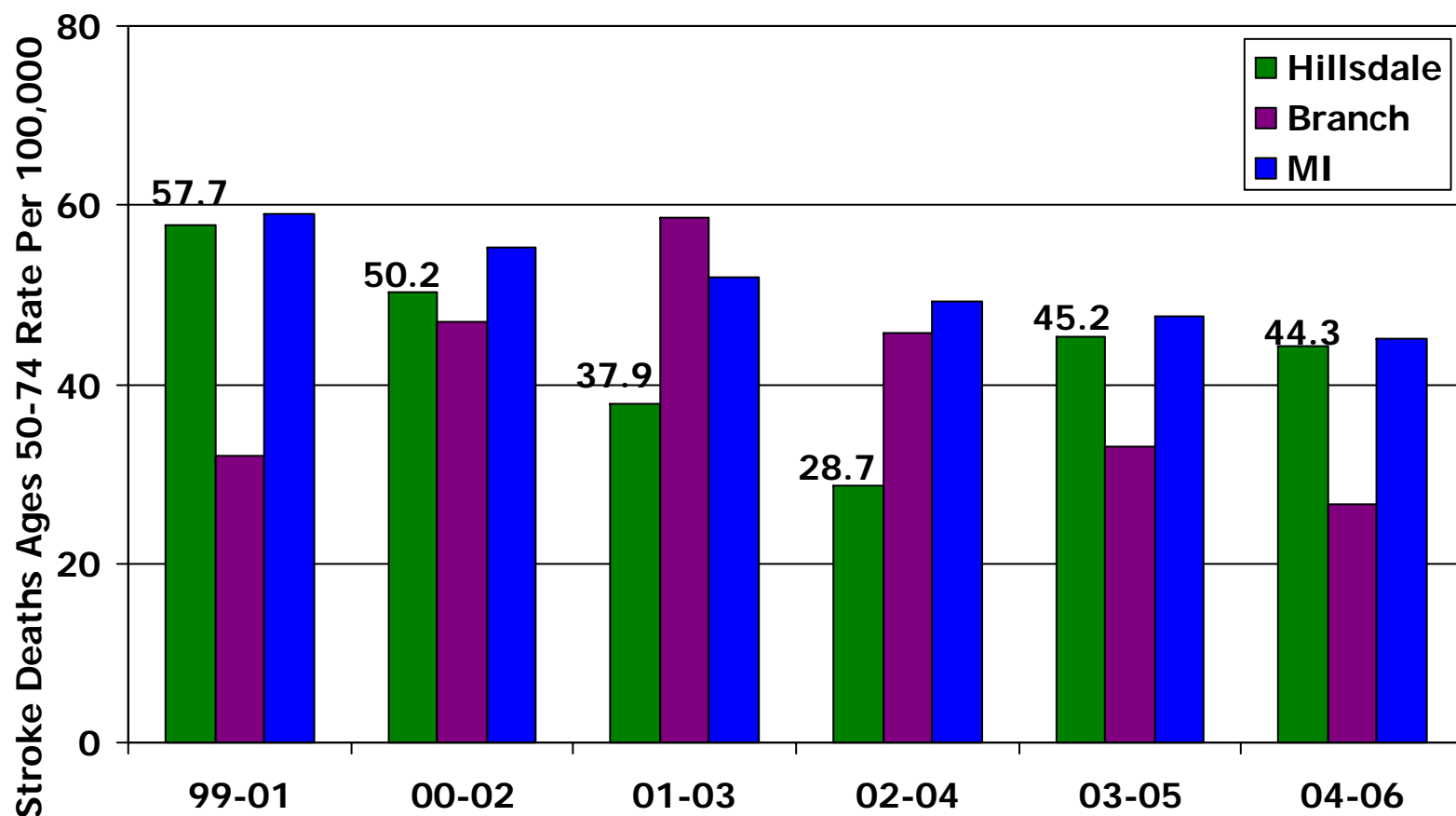
Source: Michigan Department of Community Health



Stroke Deaths – Ages 50-74

3 Year Averages – Rate Per 100,000

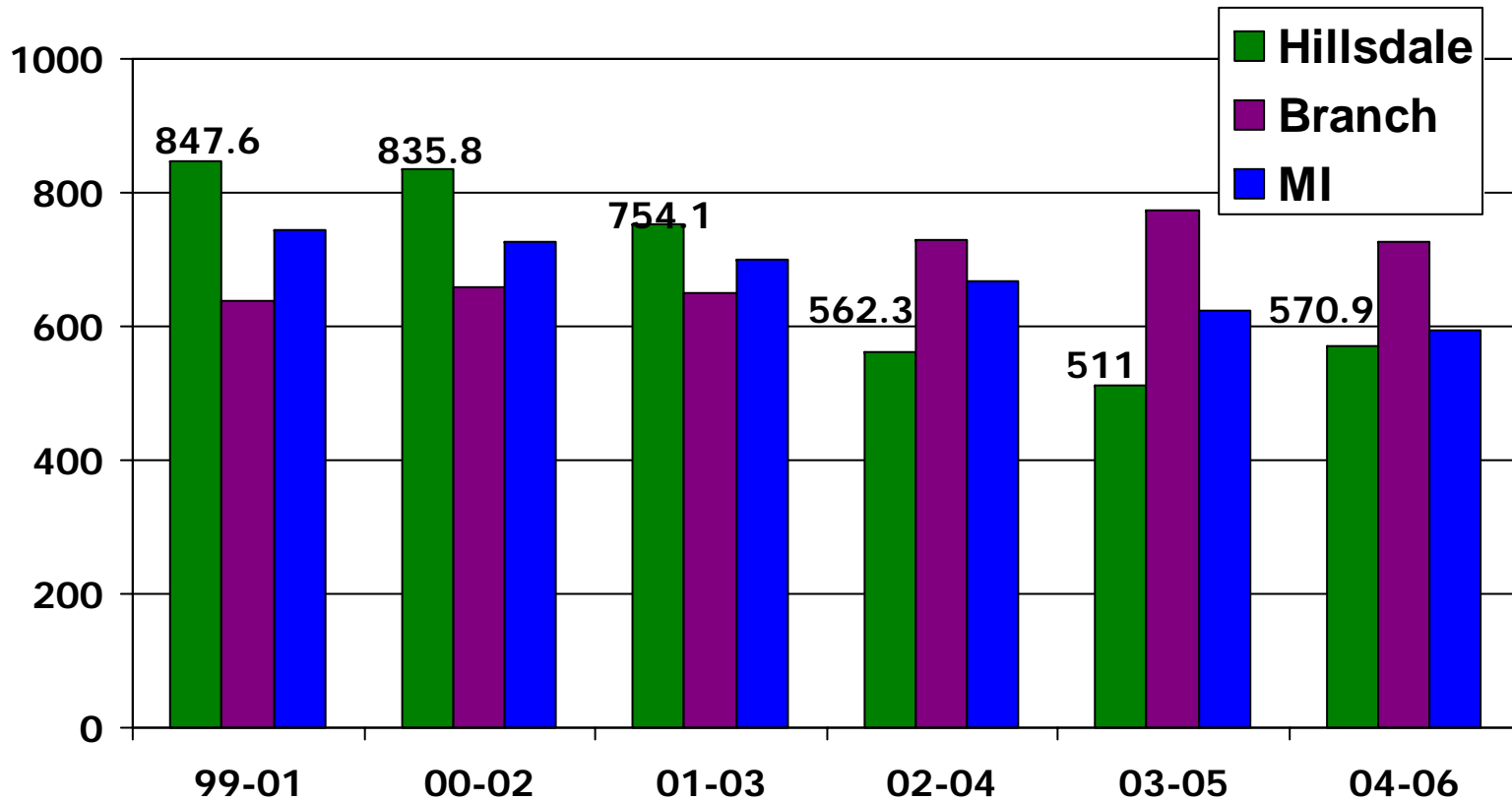
Source: Michigan Department of Community Health



Stroke Deaths – Ages 75+ 3 Year Averages – Rate Per 100,000

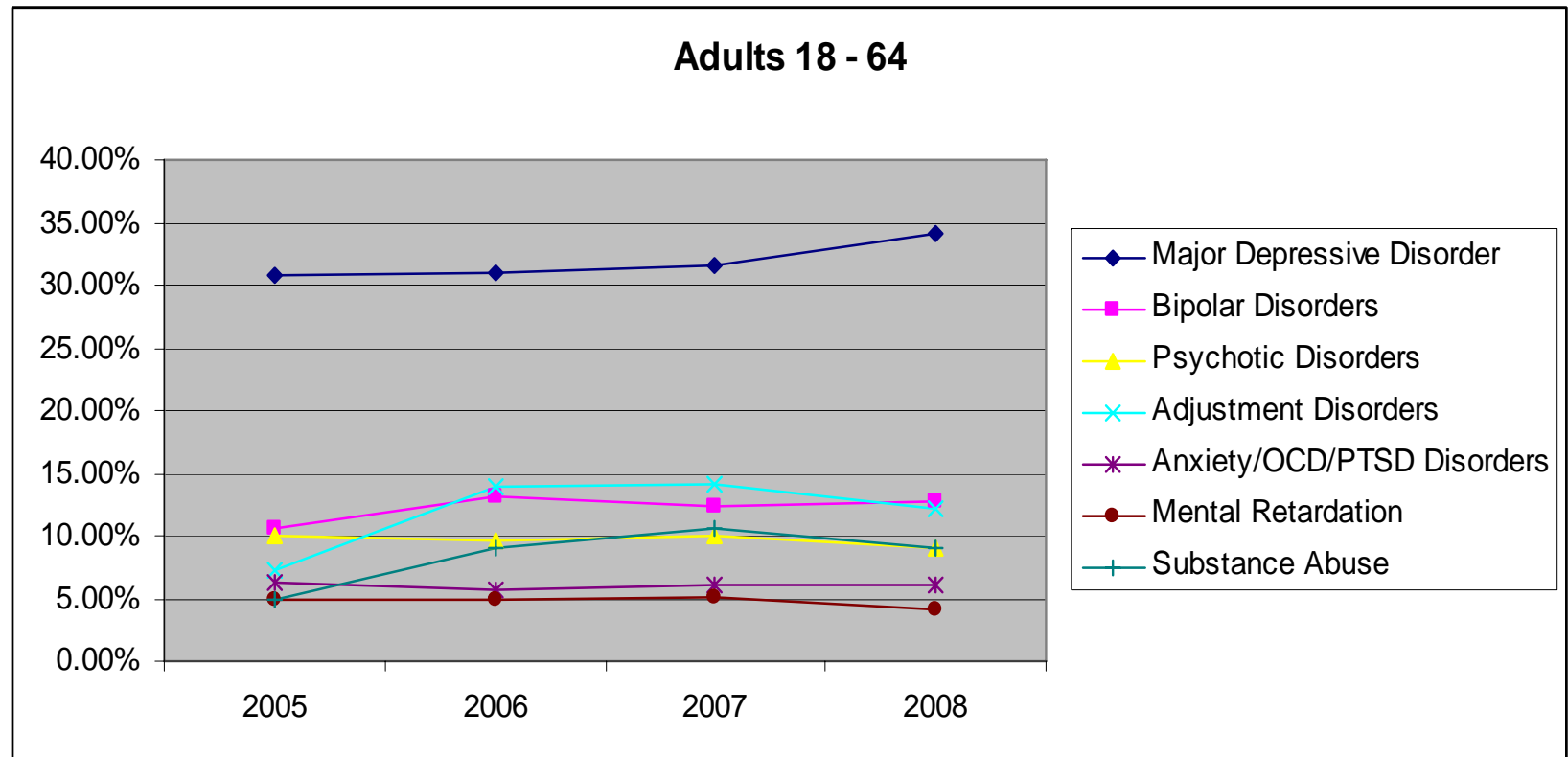
Source: Michigan Department of Community Health

Stroke Deaths Age 75+ Rate Per 100,000



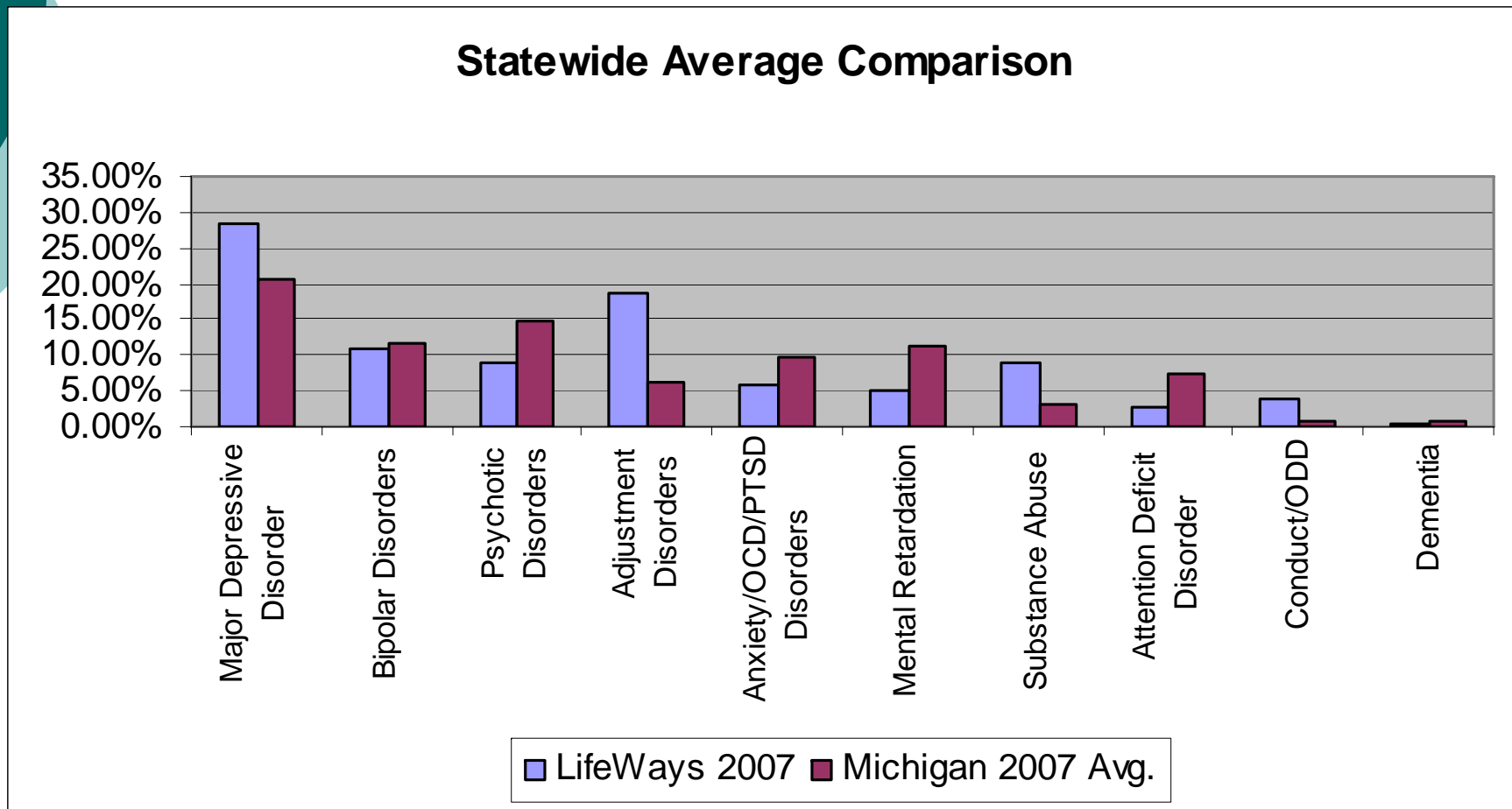
Jackson/Hillsdale Mental Health Diagnoses for Adults

Source: LifeWays CMH



* Data represents top 7 diagnoses types, not entire data set.

Jackson/Hillsdale v. MI Mental Health Diagnoses



* Data represents top 10 diagnoses types, not entire data set.



Health is the greatest gift,
contentment the greatest wealth,
faithfulness the best relationship.

Buddha

(Hindu Prince Gautama Siddharta,
the founder of Buddhism, 563-483 B.C.)



-
- A nest isn't empty until all their stuff is out of the attic.
 - If you can read this, thank a teacher.
 - A diamond is a chunk of coal that made good under pressure.
 - If at first you don't succeed, destroy all evidence that you tried.



A little Politics

It's that time of year!

Christmas is the time when kids tell Santa what they want and **adults** pay for it. Deficits are when **adults** tell government what they want and their kids pay for it.