

# HSN Indicators



Children Birth to Five  
September 2008

# Glossary of terms

- **Number** - Actual number of reported cases
- **Percent** - The percent of the total number of cases compared to the population - ex: 1 out of 4 = 25%
- **Rate** - How many you would expect, given your actual number, based on an agreed upon higher population. For example, most health related 'rates', compare all actual numbers to a population of 100,000. Rates are used to compare numbers between small groups and large groups.

$$\frac{30}{46,500} = \frac{64.6}{100,000} = \frac{6,395}{9,900,000}$$

- The above example changes 30 cases in Hillsdale County with a population of 46,500, to a rate of 64.6 cases per 100,000. This allows comparison to a larger population rate. Michigan, with 6,395 actual cases, has the same rate – 64.6

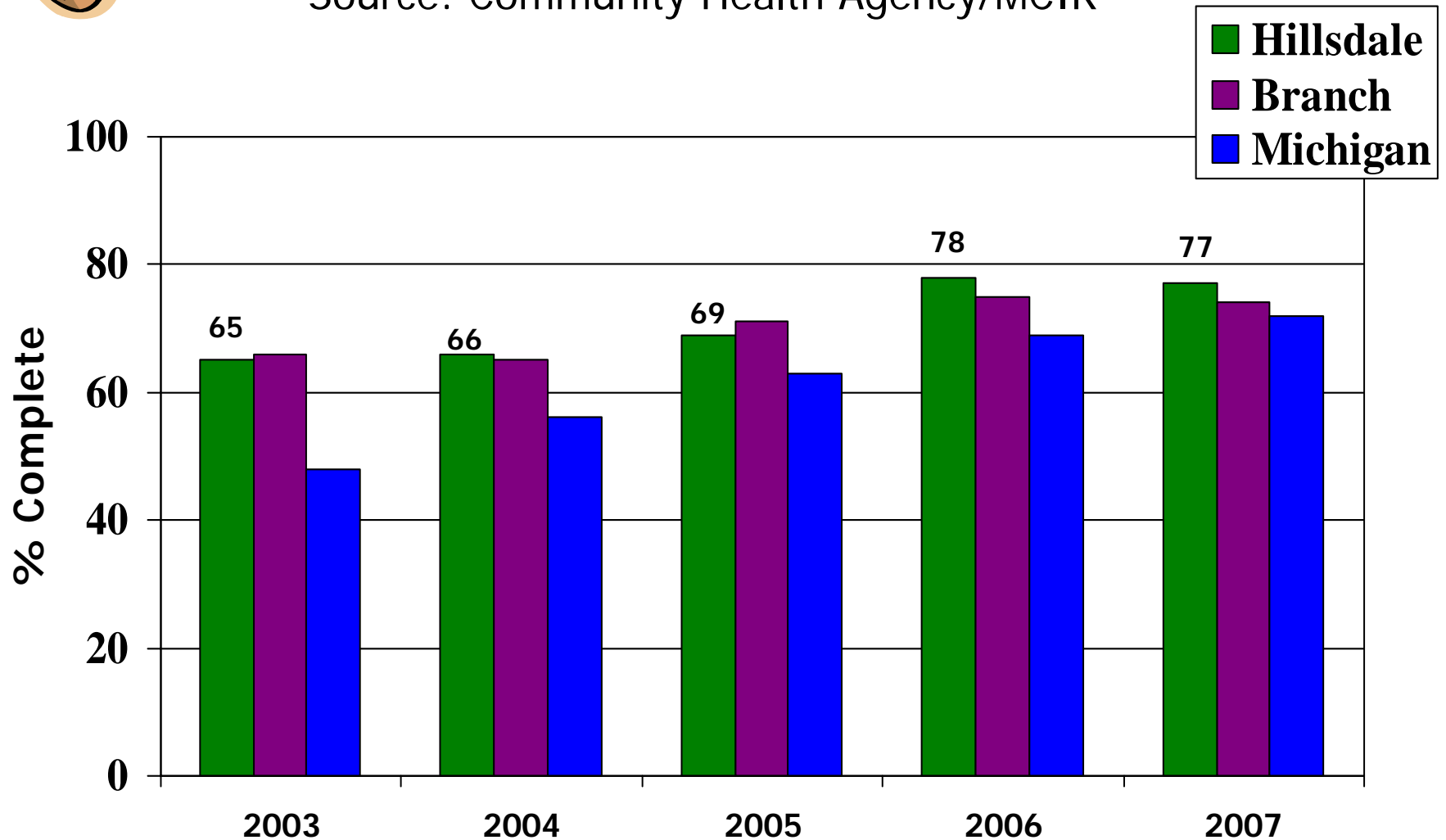
# Immunizations





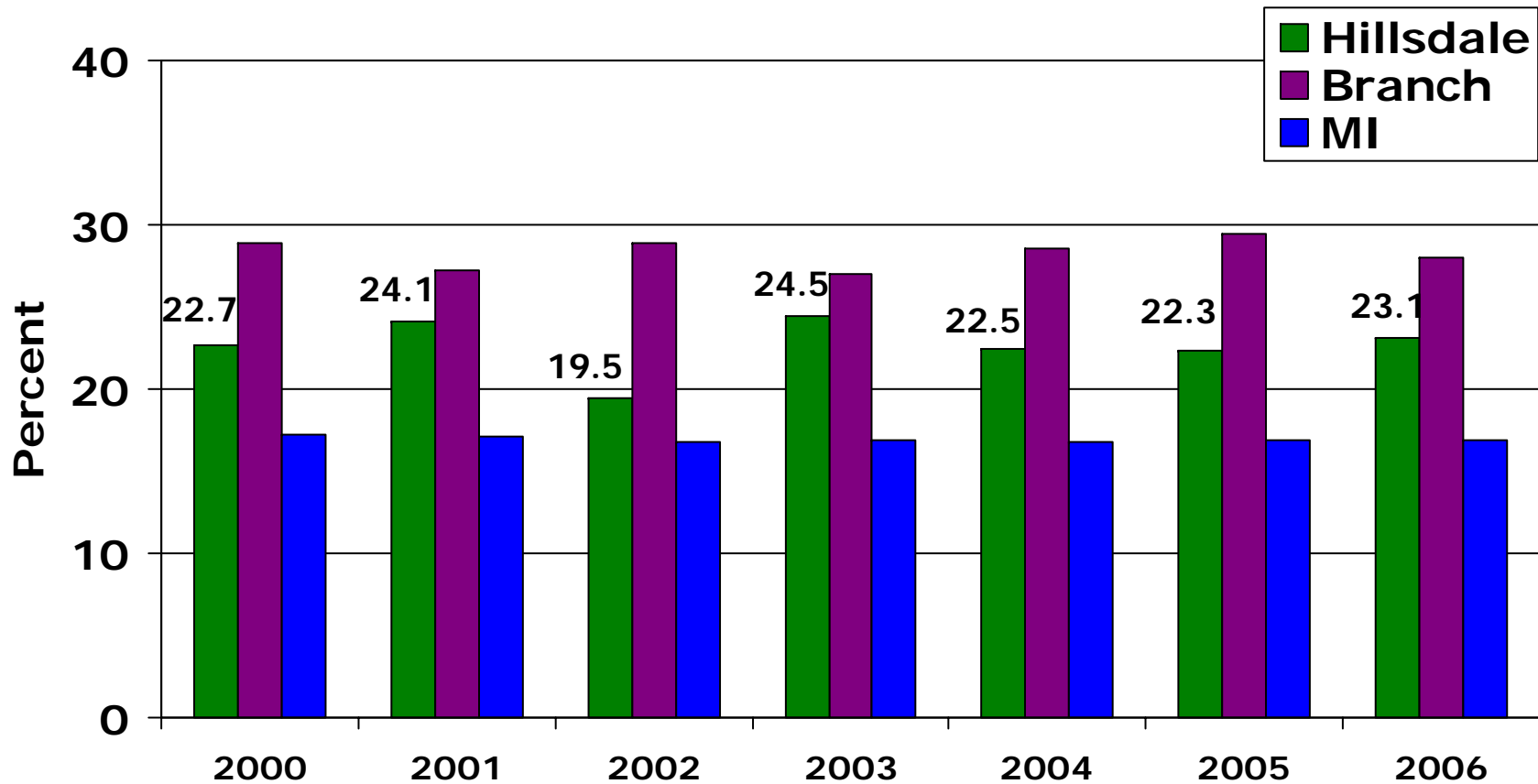
# Complete Immunizations, 19-36 Months Percent Complete

Source: Community Health Agency/MCIR



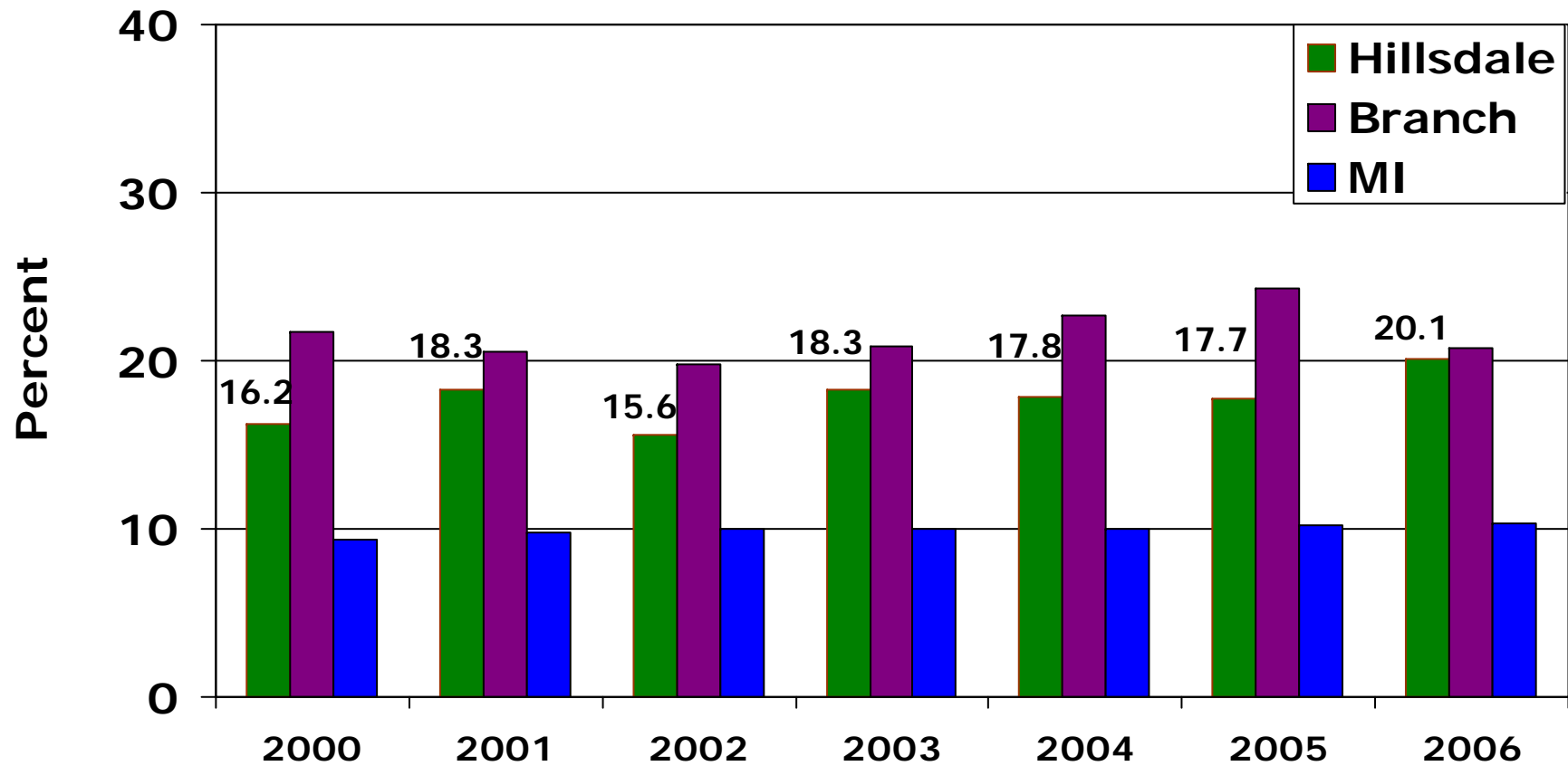
# Percent of mothers without a high school diploma – Hillsdale, Branch Co. and MI

Source: Michigan birth files



# Percent of fathers without a high school diploma Hillsdale, Branch Co. and MI

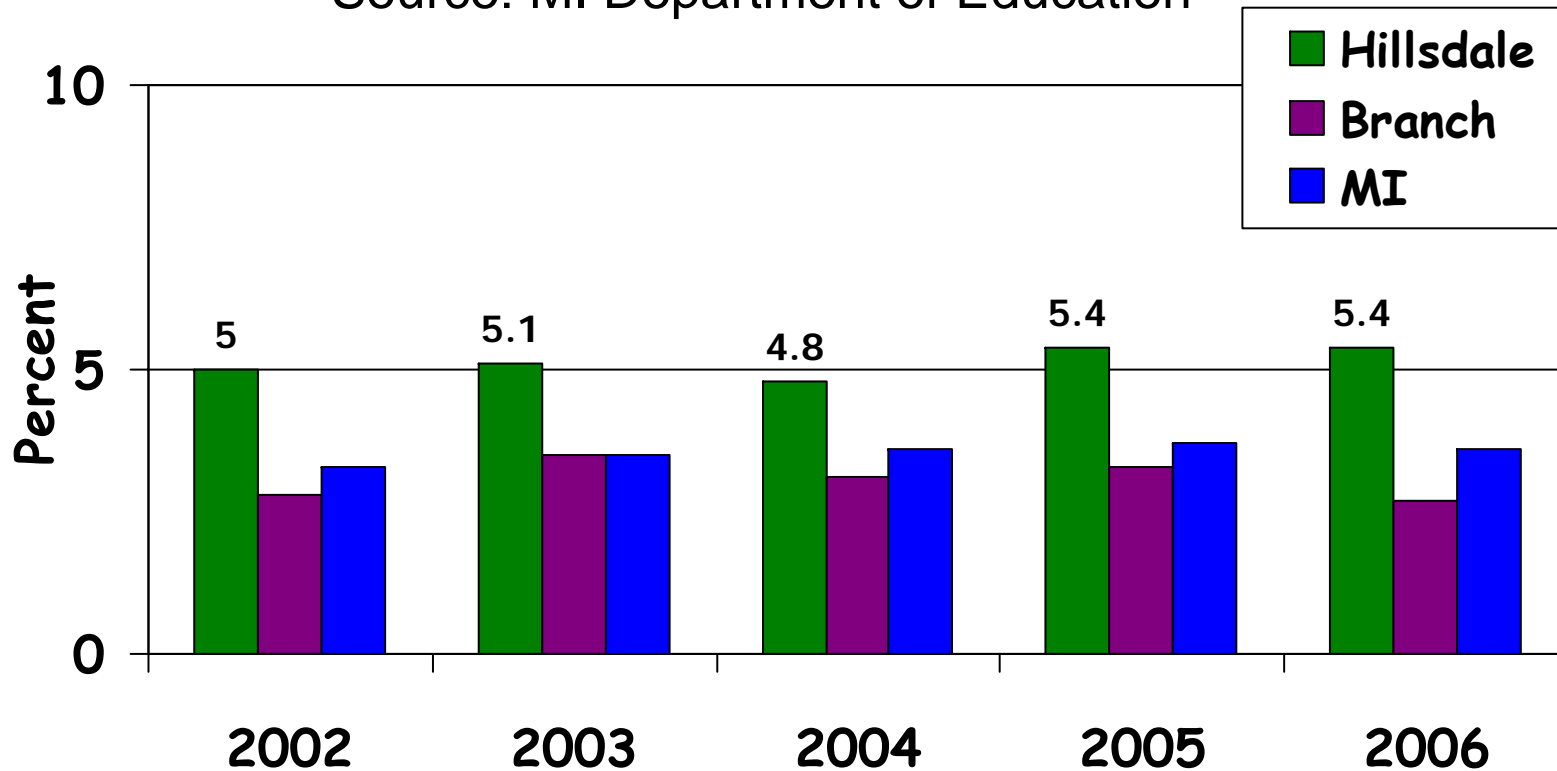
Source: Michigan birth files



# Percent in Special Education **Ages 0-5**

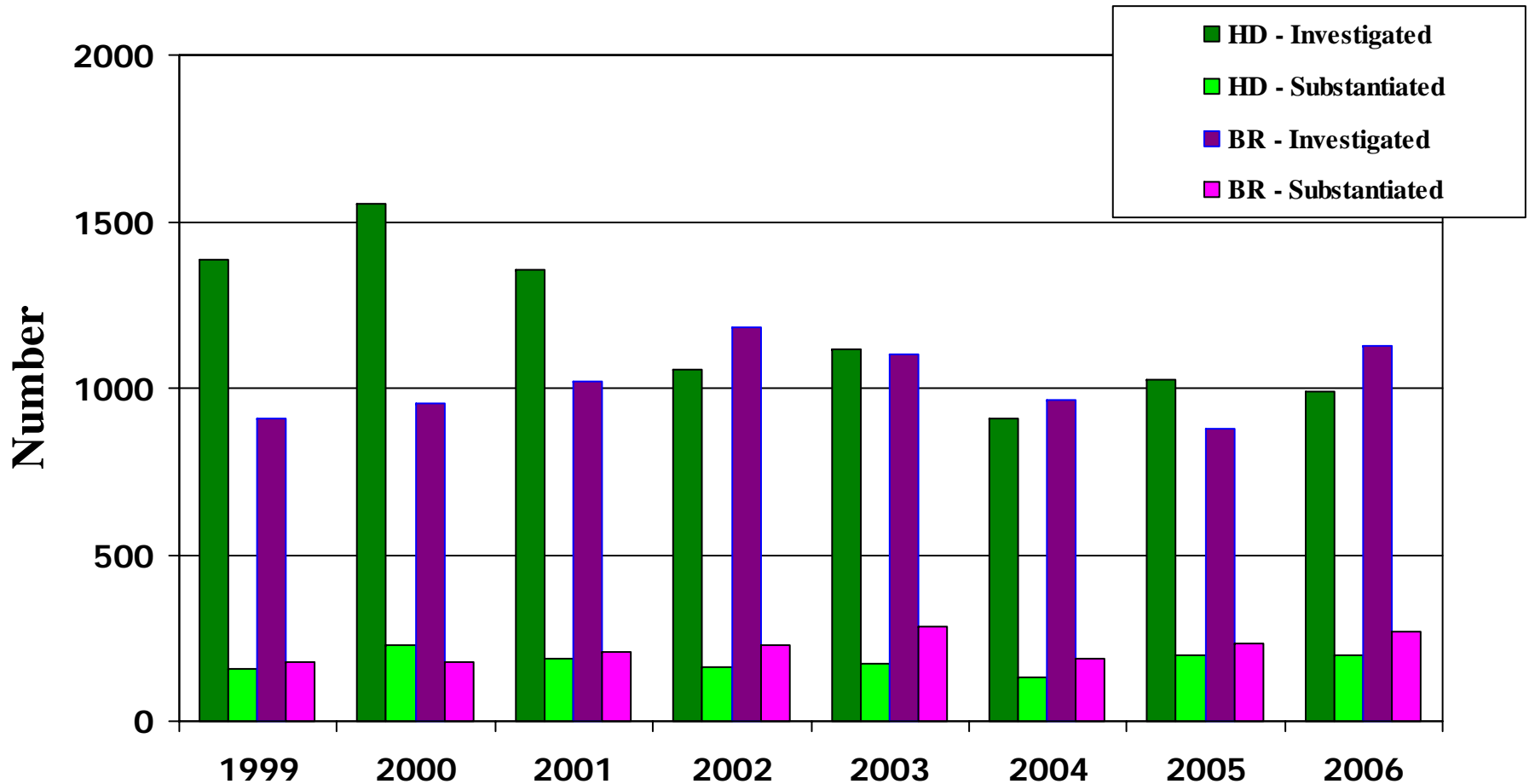
Hillsdale, Branch Counties and Michigan  
2002-2006/07 School year

Source: MI Department of Education



# DHS - Abuse and neglect Investigated and substantiated (0-18) Hillsdale, Branch Co. - 1999-2006

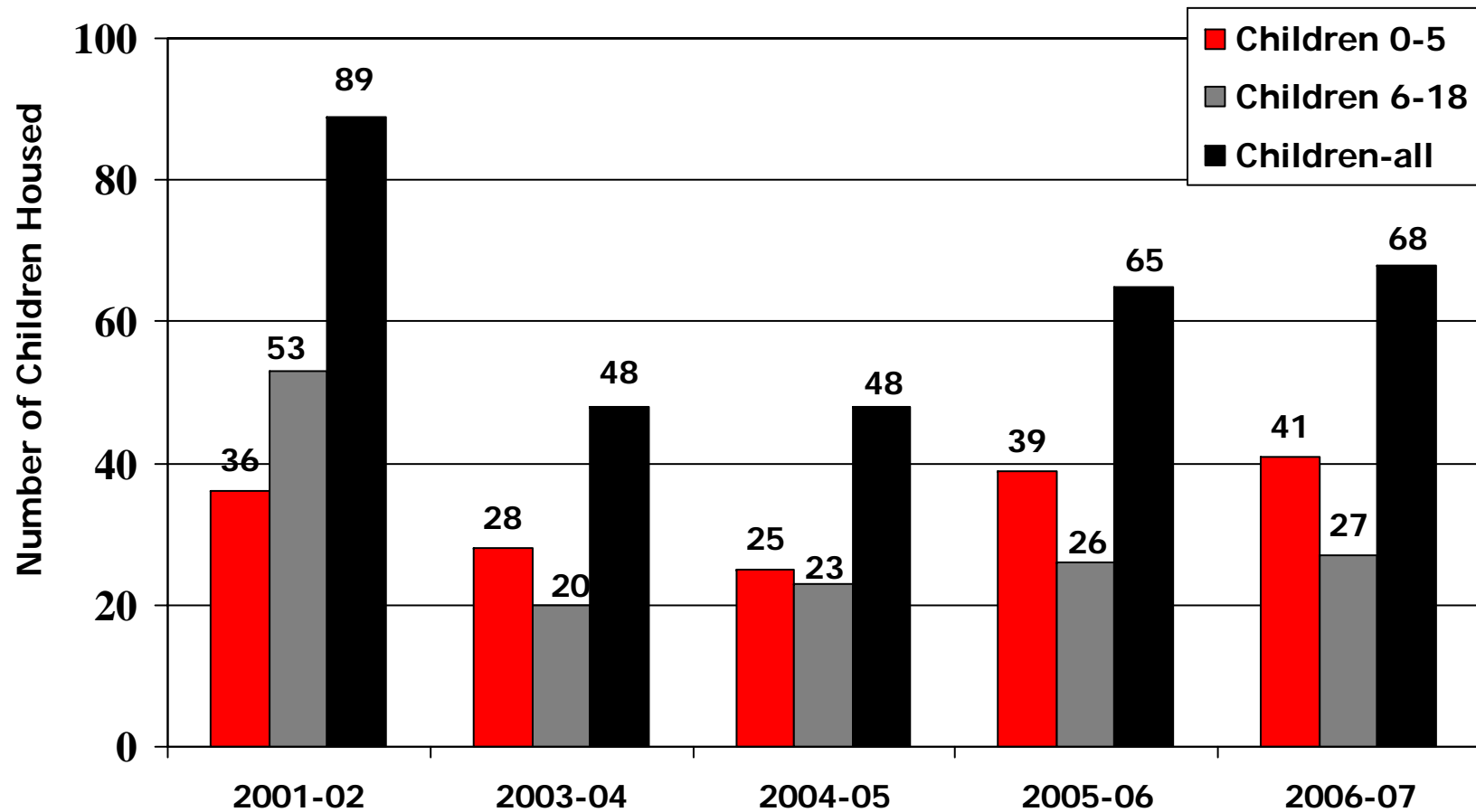
Source: Kids Count





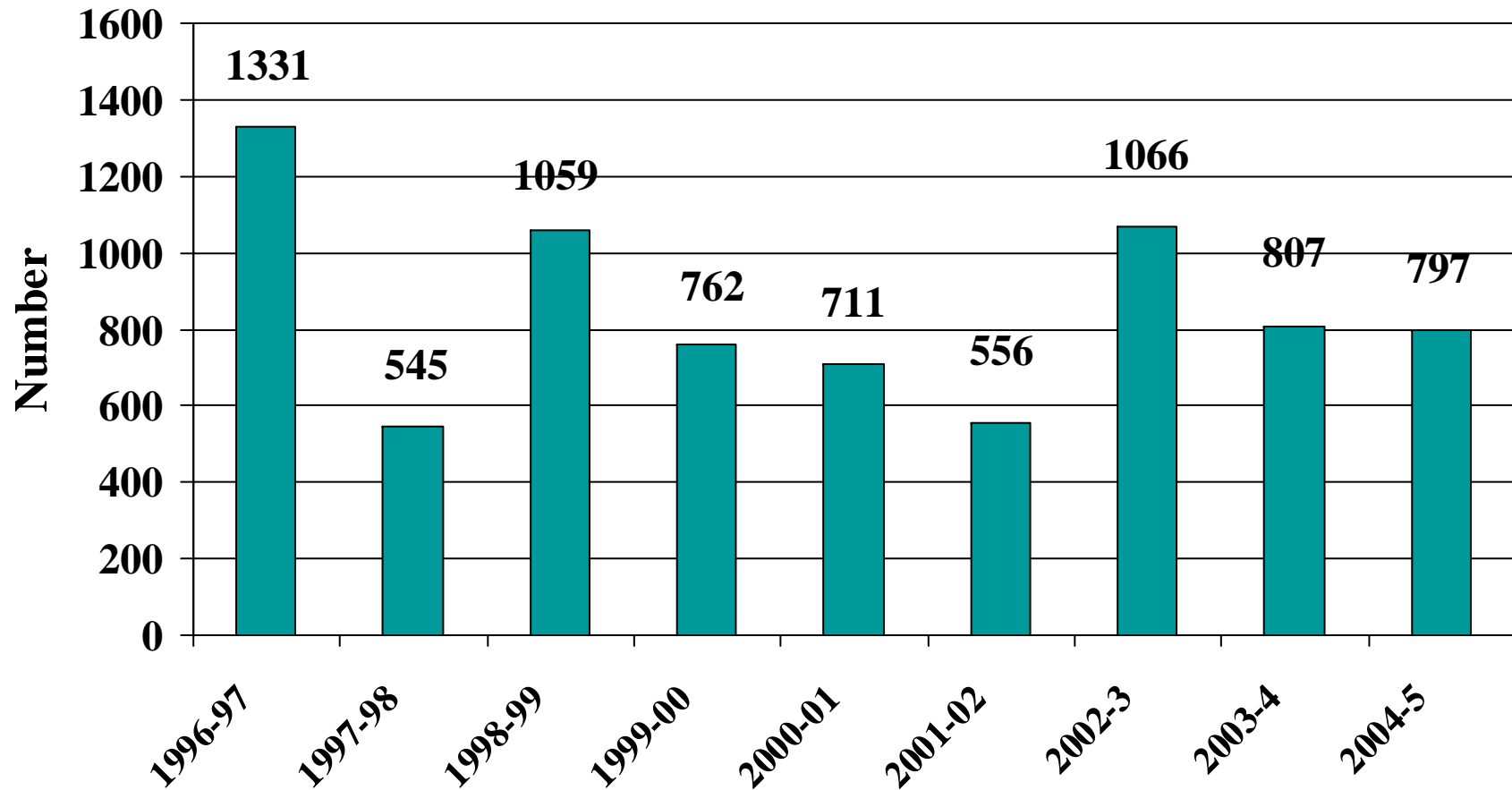
# Number of children (0 to 18) housed by Domestic Violence Shelter 2001-2007 – Hillsdale Co.

Source: Domestic Harmony



# Number of resident nights provided for children ages 0 to 18 by Domestic Violence Shelter, 1996-2005

Source: Domestic Harmony



# Poverty estimates for Hillsdale County children age 0 to 5

Source: U.S Census 1990 & 2000/SAIPE

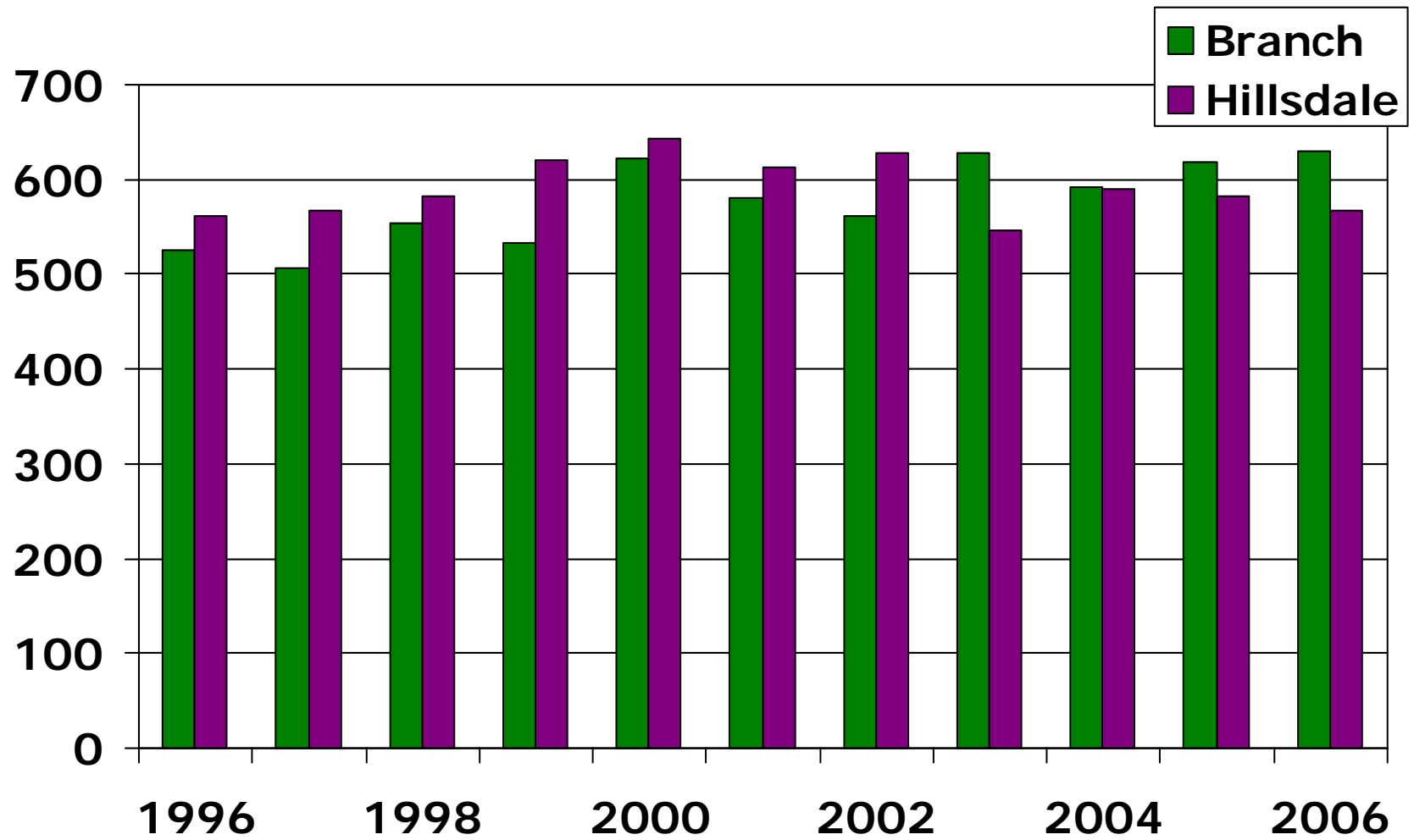
	1990	1993	1995	1997	2000
Total Children 0-5	3296	3669	3598	3554	3643
Number in Poverty	685	919	792	596	428
Percentage in Poverty	20.8%	25%	22.0%	16.8%	11.8%

# Pregnancy & Prenatal Care



# Births by Year

Source: Michigan Birth Files - MDCH

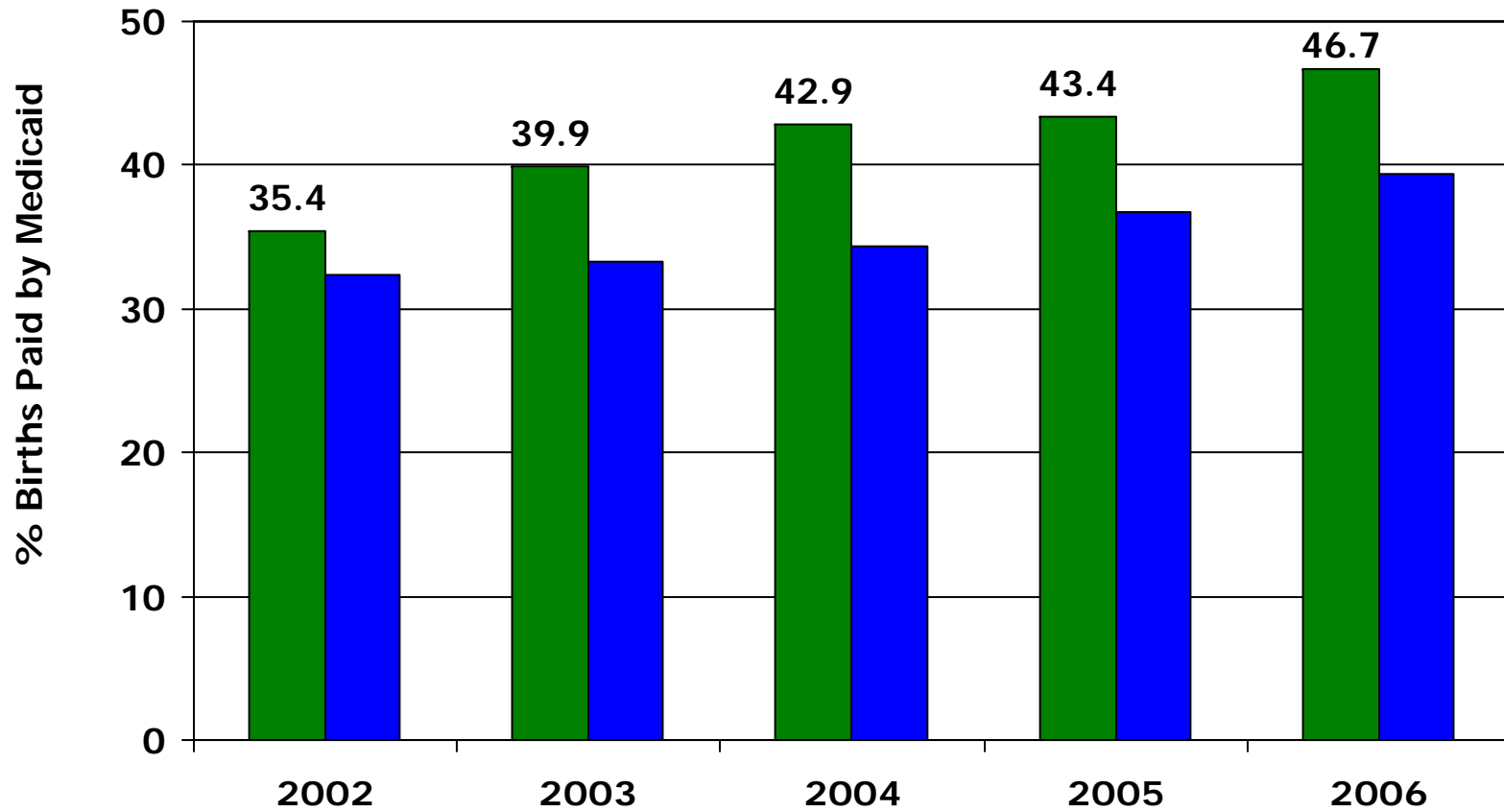




# Births Paid by Medicaid 2002-2006 Hillsdale County and Michigan

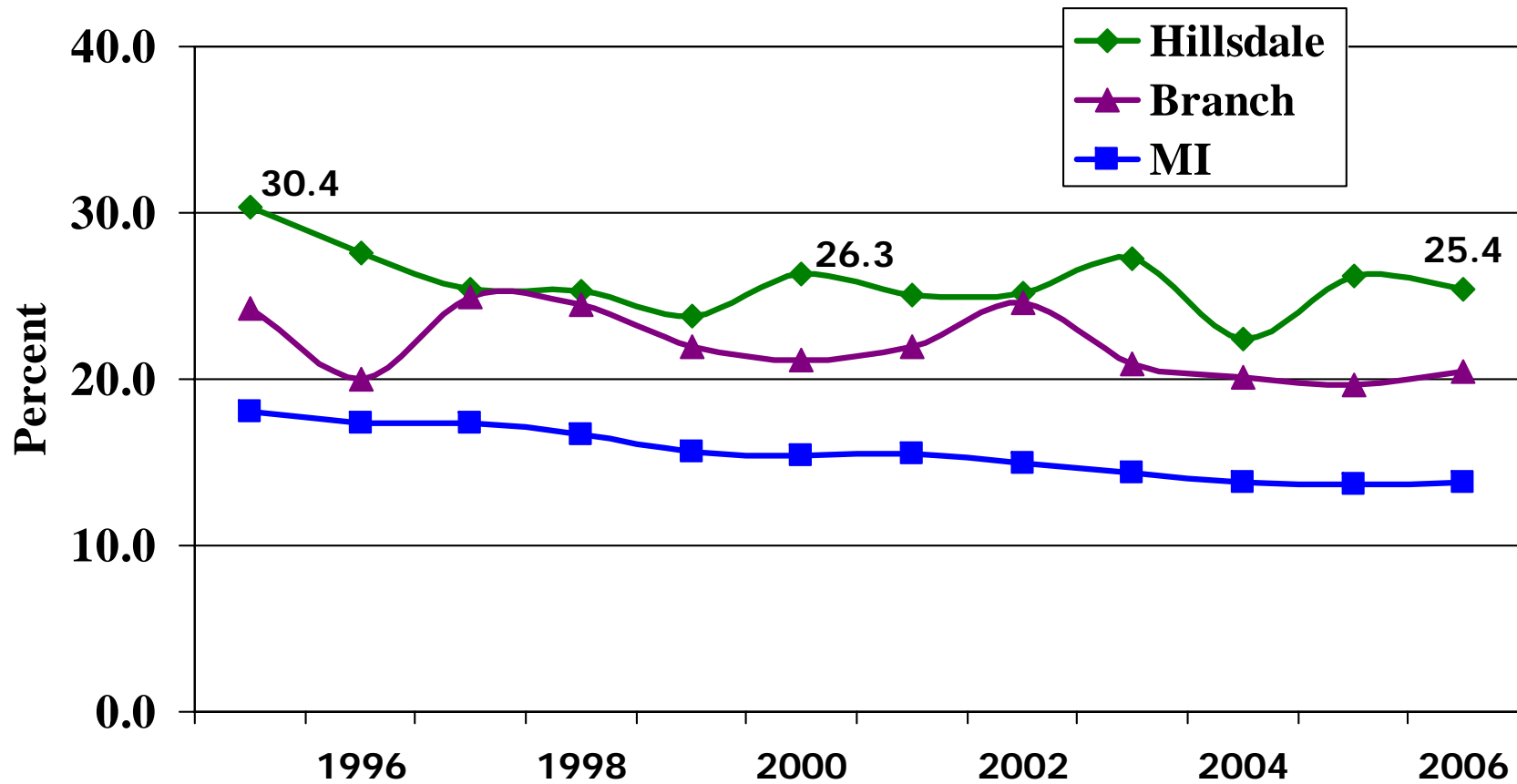
Source: Kids Count - CLIKS

% Medicaid 1999 - 29%, 2004 - 43%



# Smoking: Percent of Mothers Who Report Smoking While Pregnant

Source: Michigan Birth Files

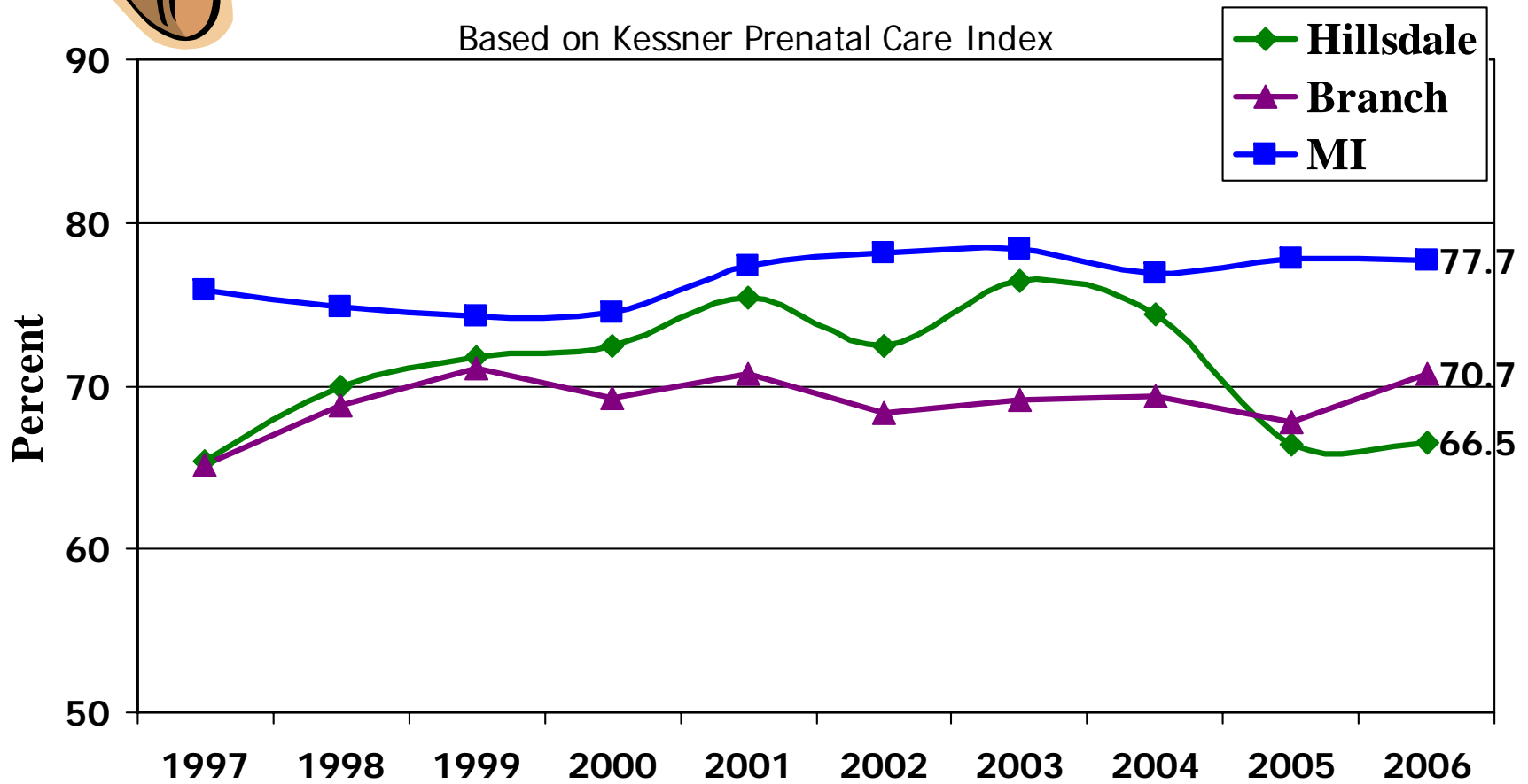




# Prenatal Care

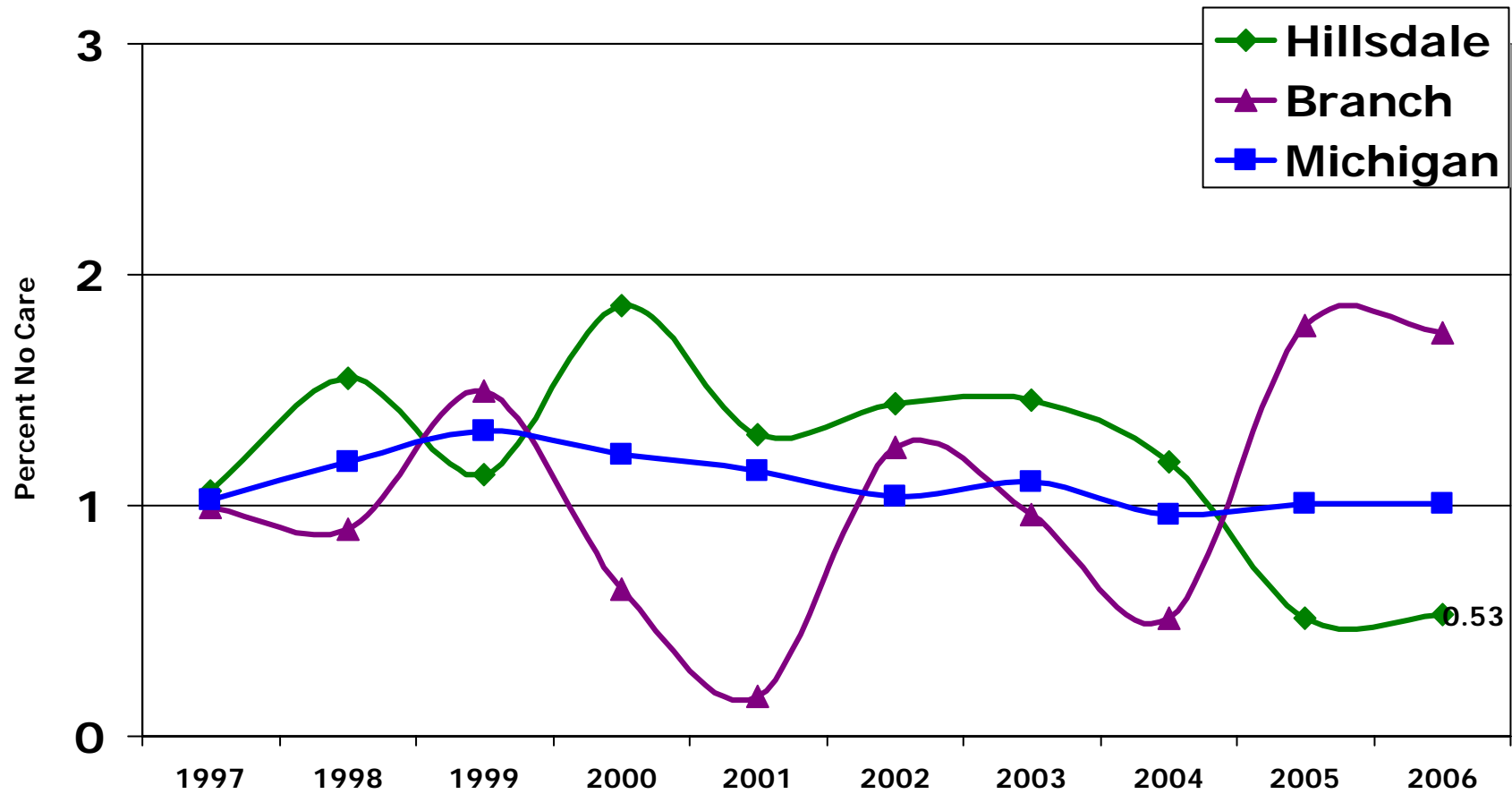
## Percent with Adequate Care

Source: Michigan Birth Files



# No Pre-Natal Care as a % of Total Births

Source: Michigan Birth Files

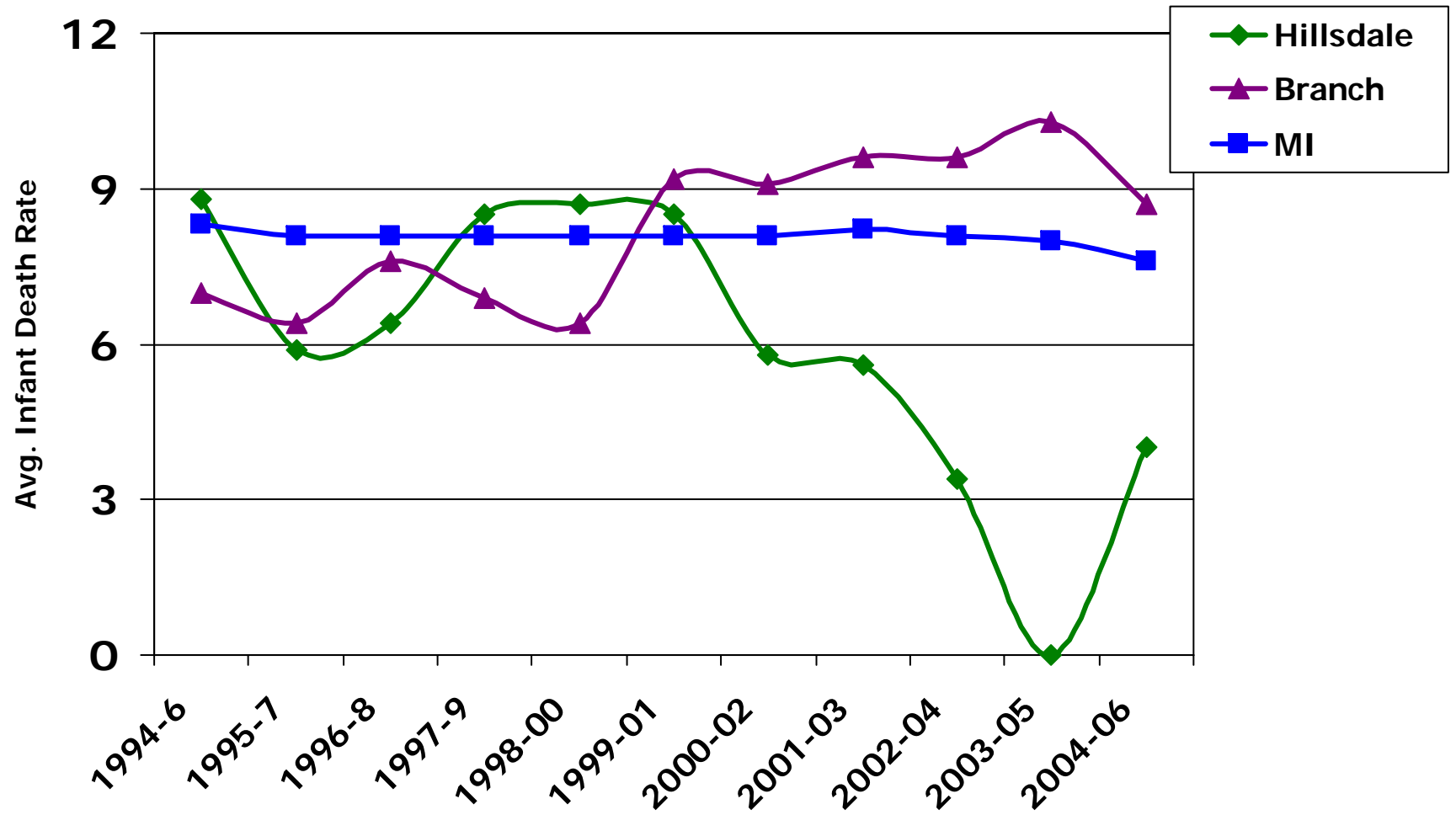




# Infant Mortality Rate

## 3 Year Averages (1994-2006)

Source: Michigan birth files

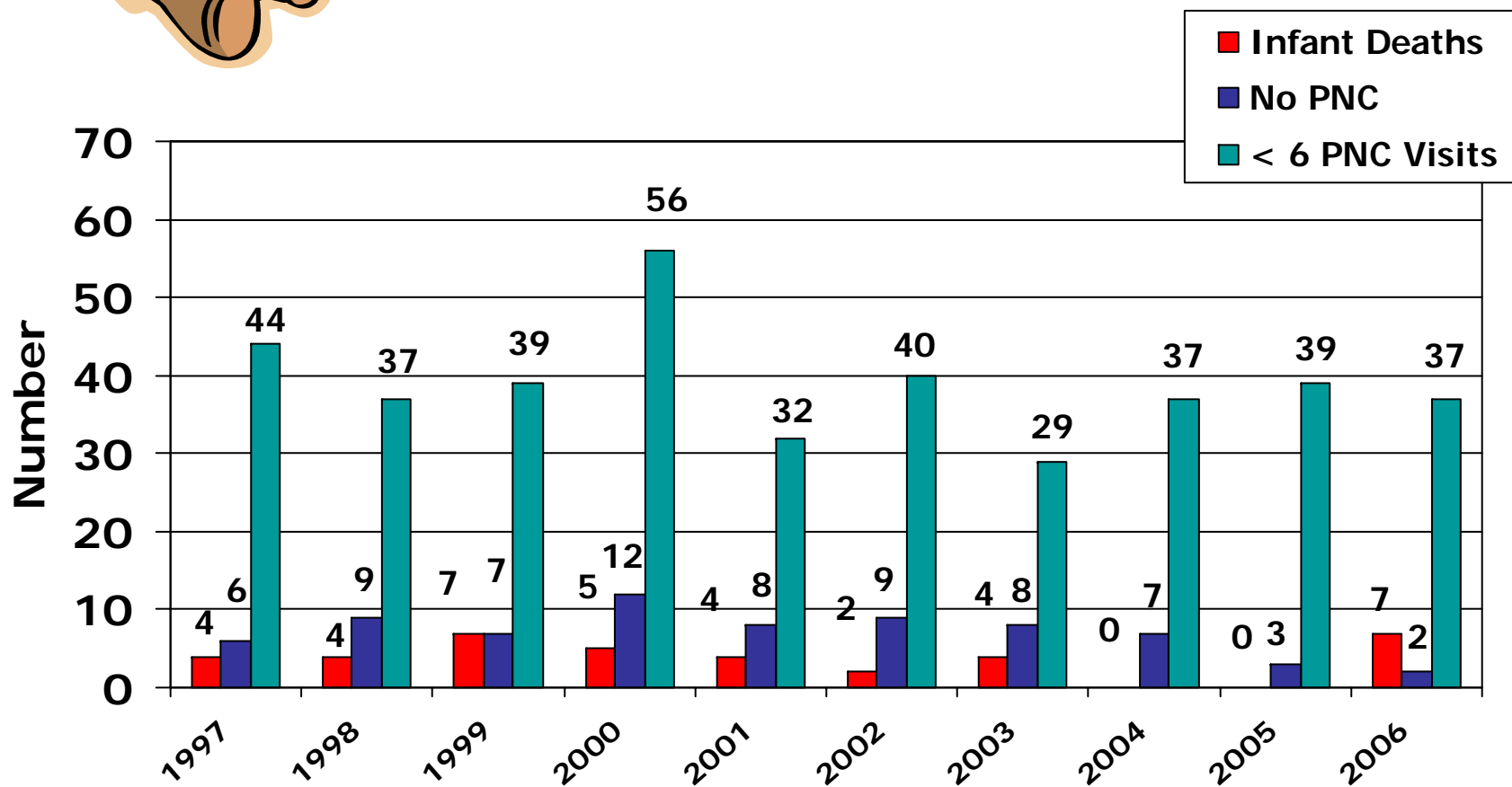




# Infant Deaths and Prenatal Care

Hillsdale County 1997-2006

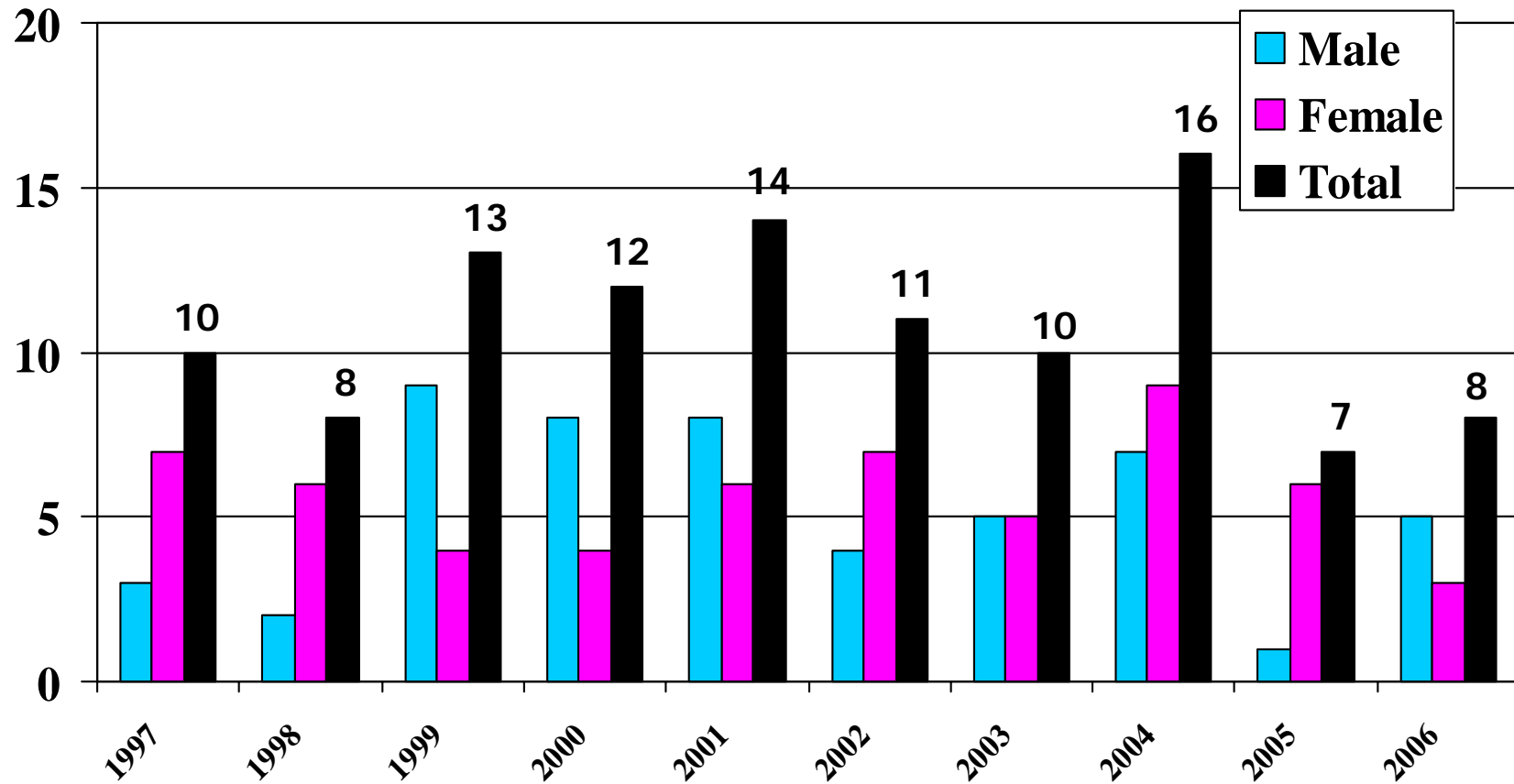
Source: Michigan Birth Files





# Deaths of children ages 0 to 18 Hillsdale County 1997-2006

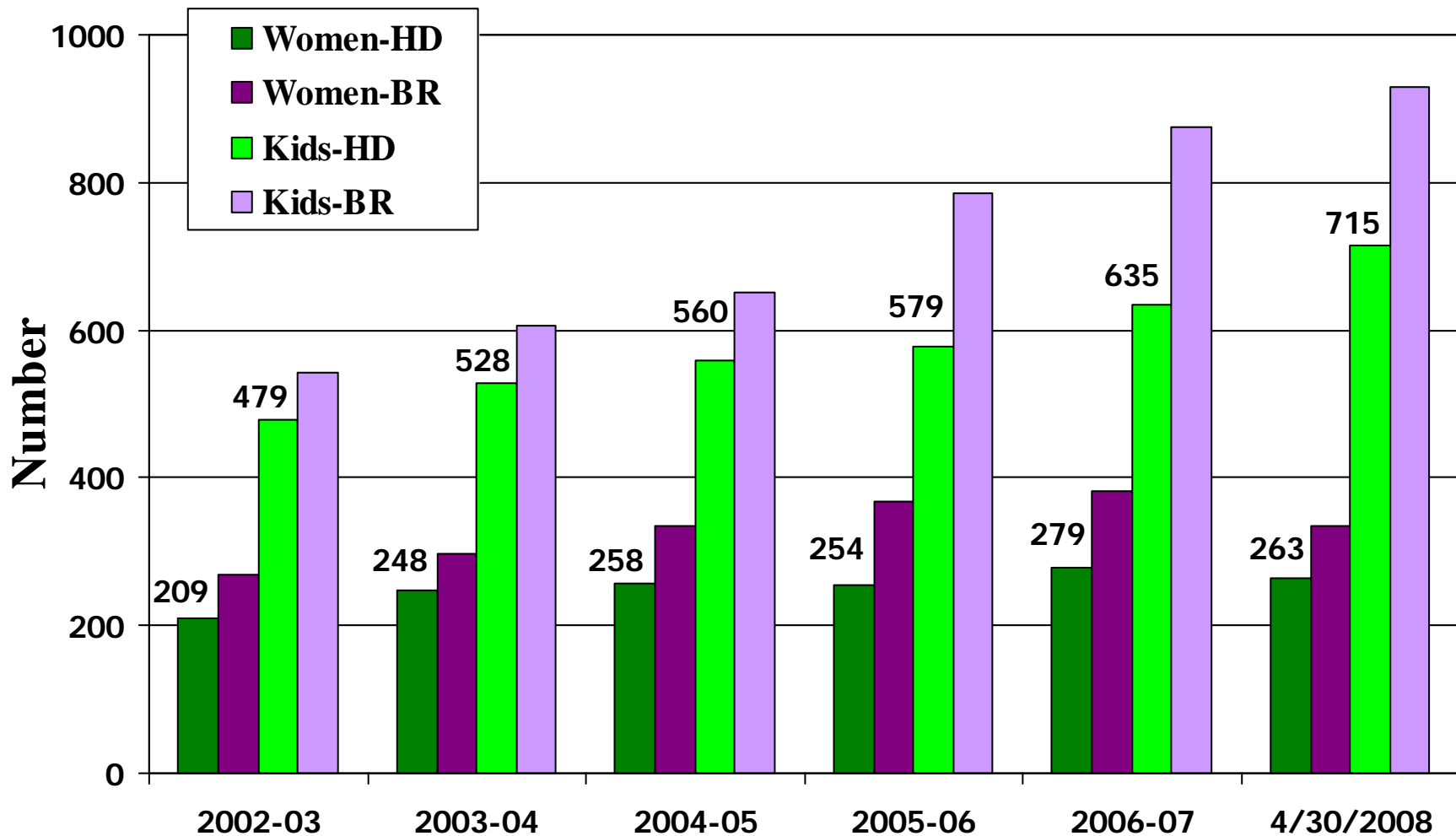
Source: MDCH Death Files





# Annual WIC enrollment Hillsdale/Branch Counties, 2002-2008 Average

Source: MDCH WIC program data



# Final Thoughts

- There's nothing sadder in this world than to awake Christmas morning and not be a child.

Erma Bombeck

- Children have never been very good at listening to their elders, but they have never failed to imitate them.

James Baldwin

- Any kid will run any errand for you if you ask at bedtime.

Red Skelton