
HSN Report

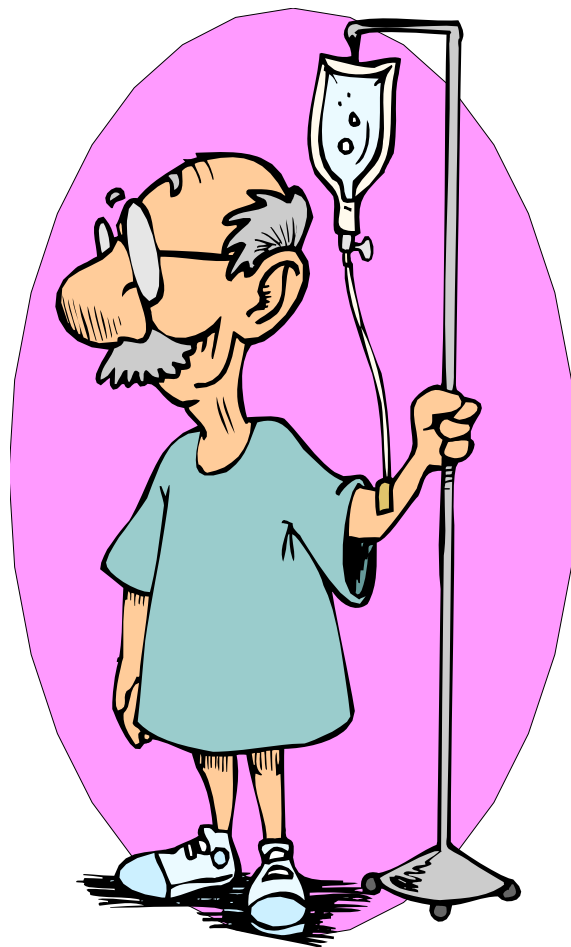
Seniors

October, 2006

Definition

The Lottery is a tax on people who don't understand statistics!!

What is making our seniors sick?



Number and rate/10,000 of Leading Causes of Ambulatory Care Sensitive Hospitalizations, Hillsdale, Branch and Michigan Residents Age 65+, 2004

Source: MDCH Hospitalization files

<u>Cause</u>	BR <u>Rate</u>	HD <u>Rate</u>	MI <u>Rate</u>
Heart Disease	181	268	247
Pneumonia	205	180	173
COPD	176	160	111
Kidney Infections	77	71	69
Dehydration	40	48	44
Cellulitis	42	26	33
Diabetes	27	30	26
Asthma	31	16	23

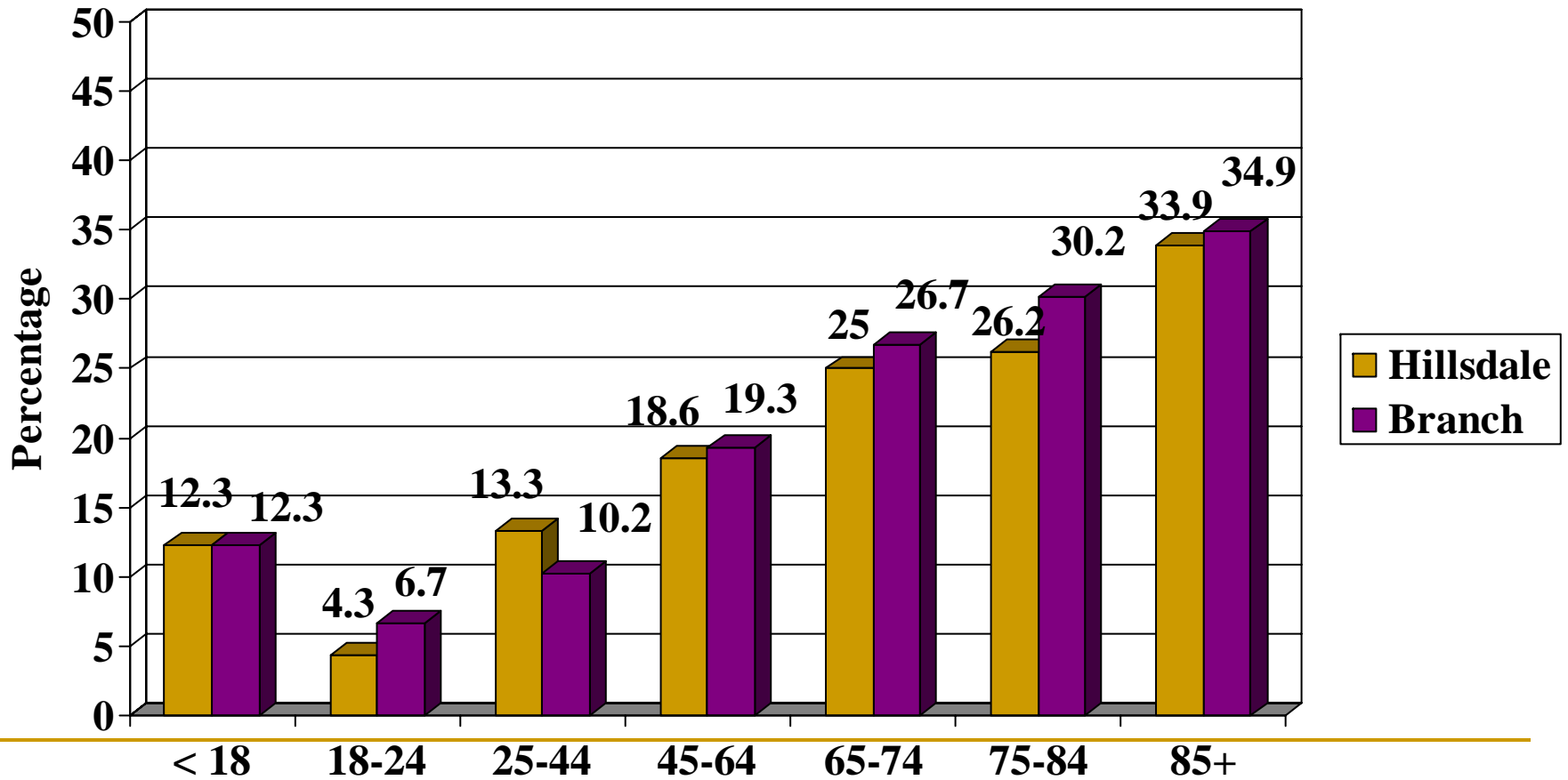
Percentage of preventable hospitalizations by age group, Hillsdale, Branch, and Michigan - 2004

Source: Michigan Resident Inpatient Files

	Hillsdale	Branch	MI
< 18 yrs	10.5	12.2	12.4
■ 18-24	5.0	7.9	8.1
■ 25-44	11.5	11.0	11.0
■ 45-64	21.0	18.9	19.7
■ 65-74	21.5	23.2	23.8
■ 75-84	28.4	37.3	29.0
■ 85+	44.8	35.6	36.6

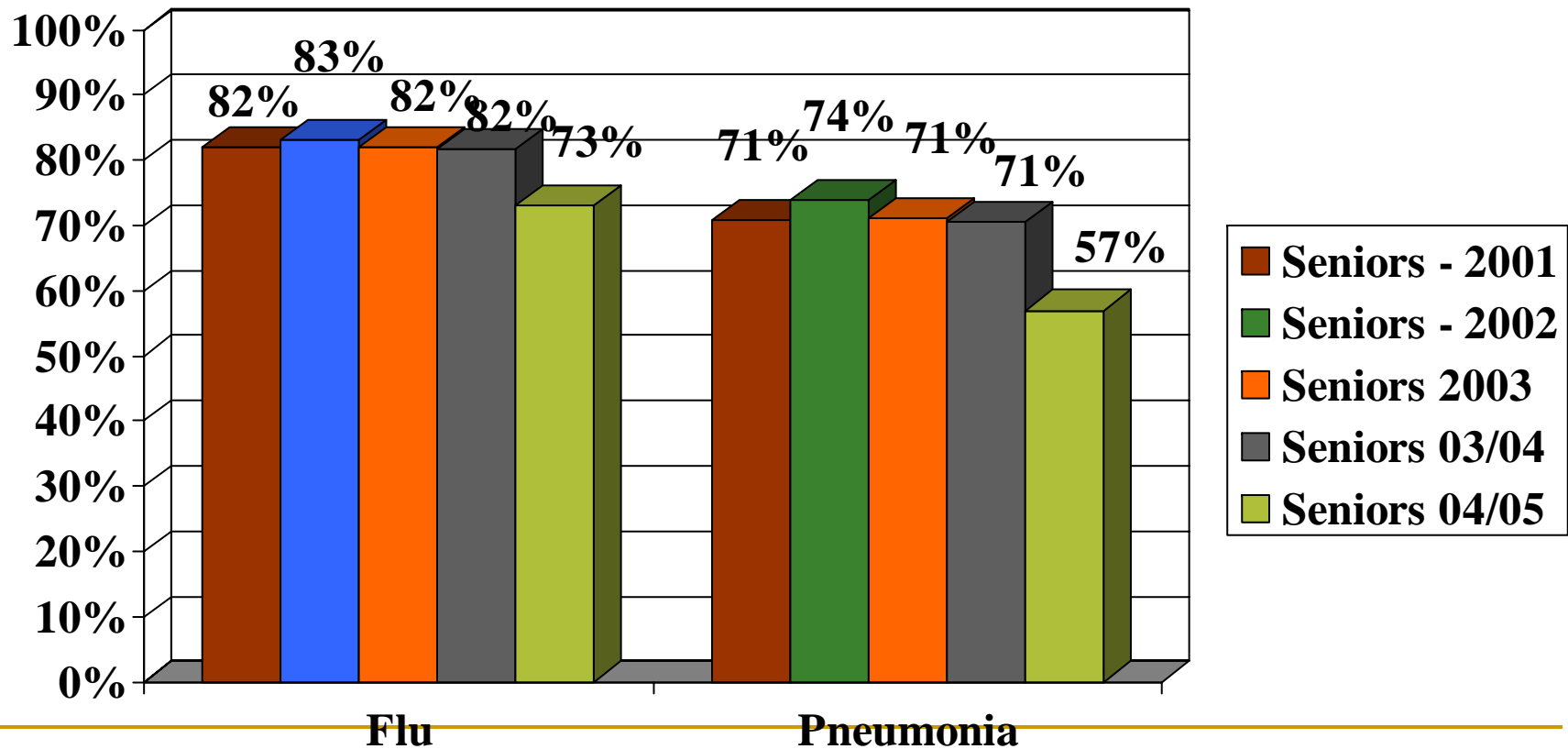
Percentage of preventable hospitalizations by age group, Hillsdale and Branch County - 2003

Source: MDCH Hospitalization files



Percentage of Hillsdale seniors who received a flu or pneumonia shot

2001-2005 Senior Needs Survey



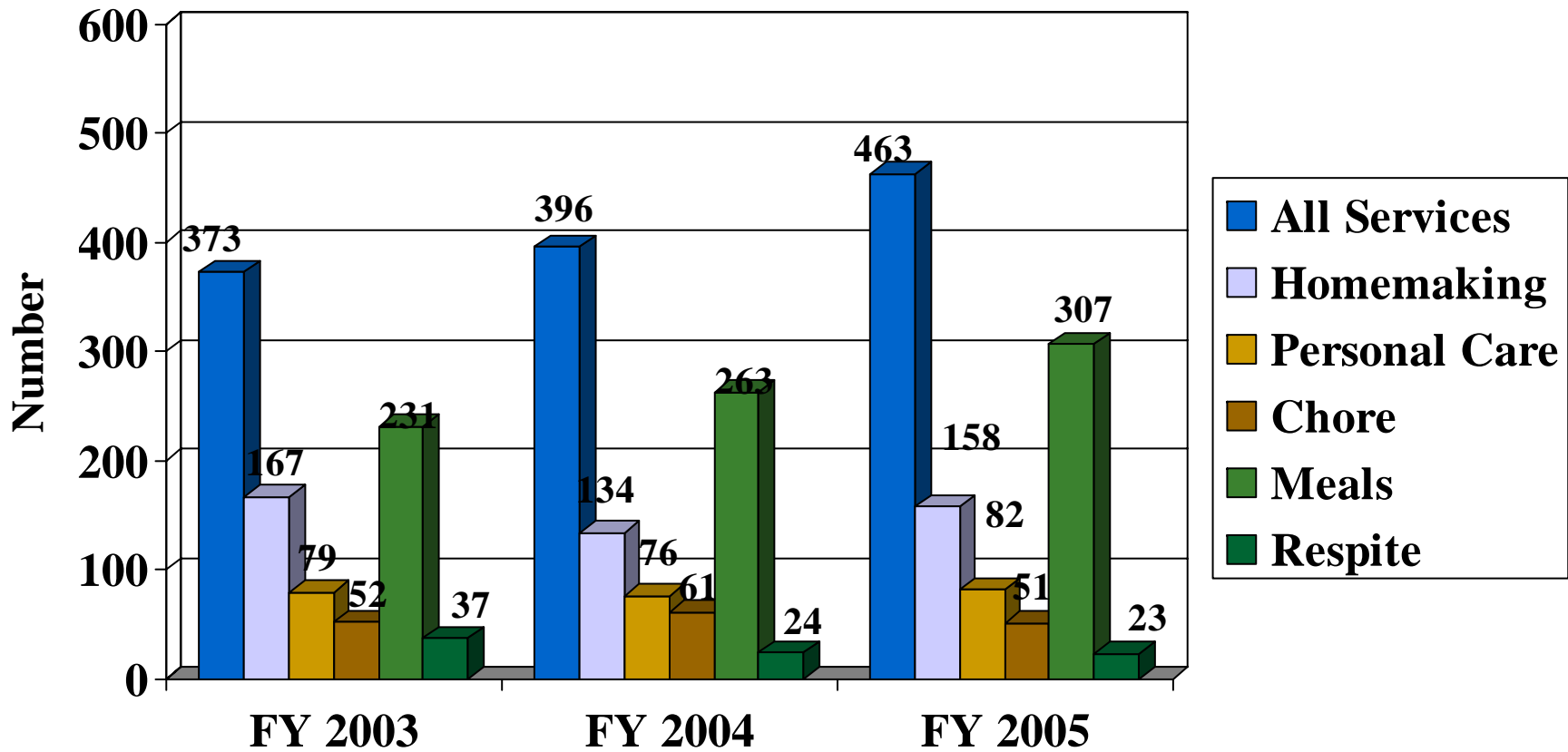
Educational opportunities for Hillsdale County seniors

- Adult Education
- JCC
- Elder Hostel
- Lifelong learning at
Hillsdale County Senior
Services Center
(HCSSC)



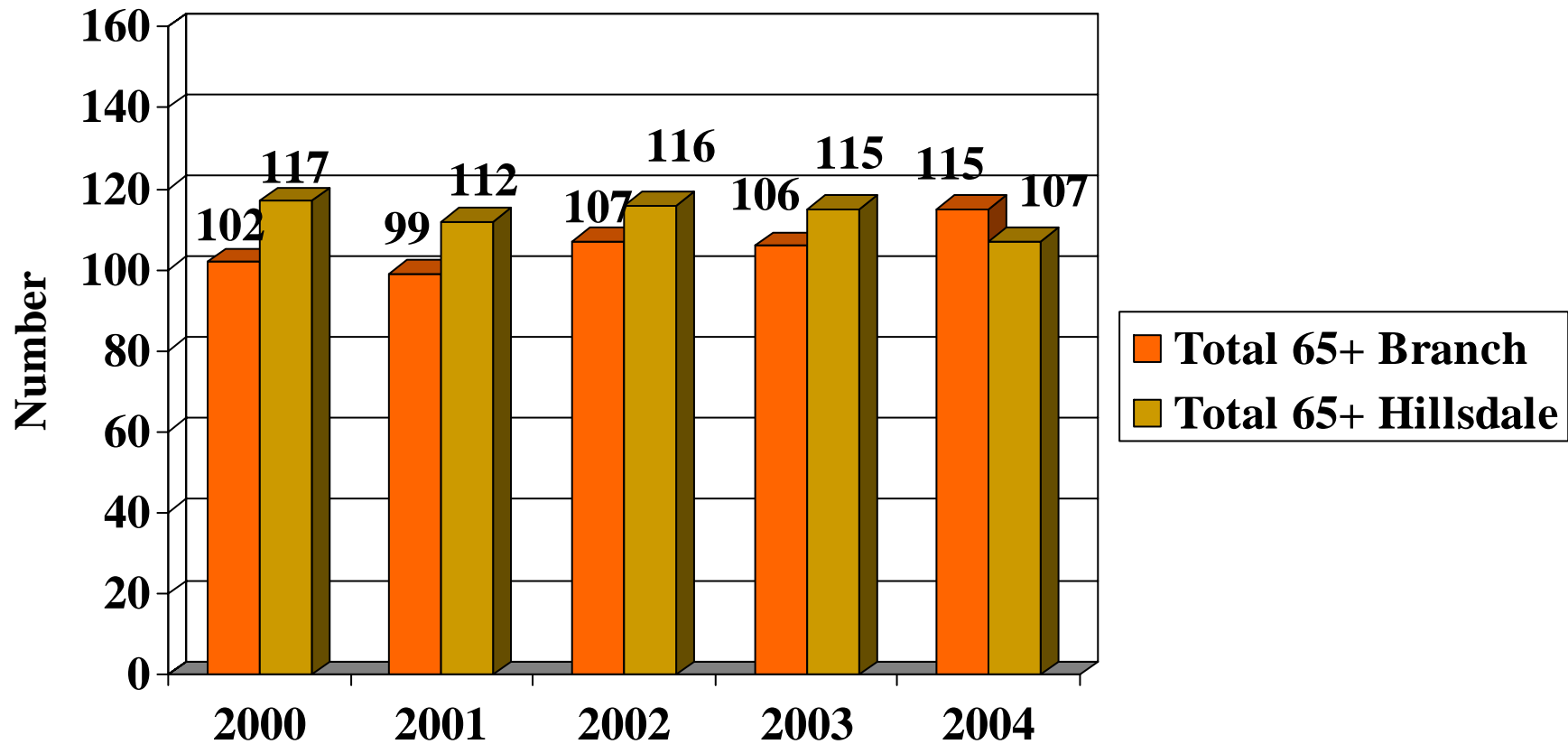
In-home Services for the Elderly in Hillsdale County

Source: Hillsdale County Senior Services Center



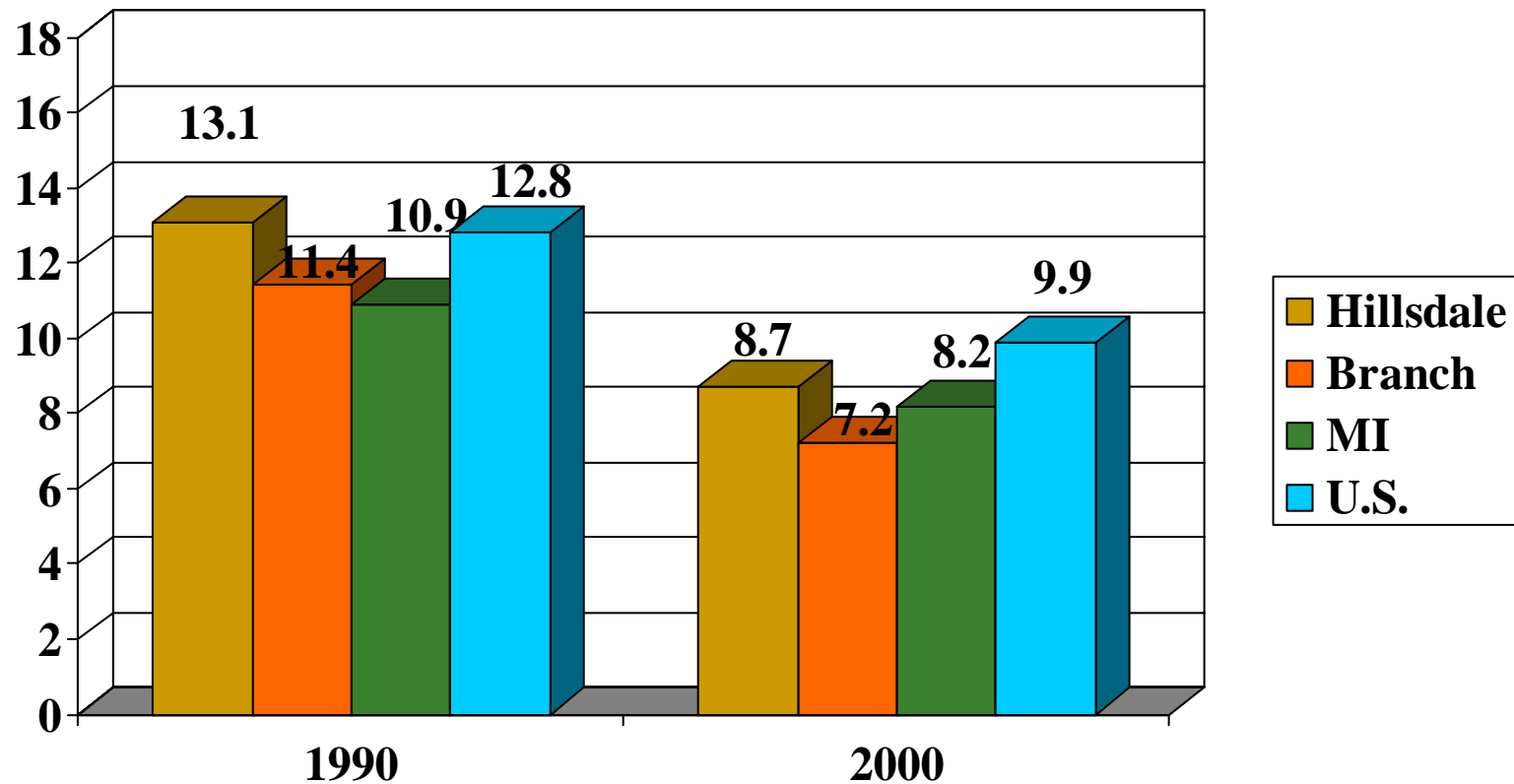
Hillsdale seniors receiving SSI- age group 65+

Source: US Social Security Administration



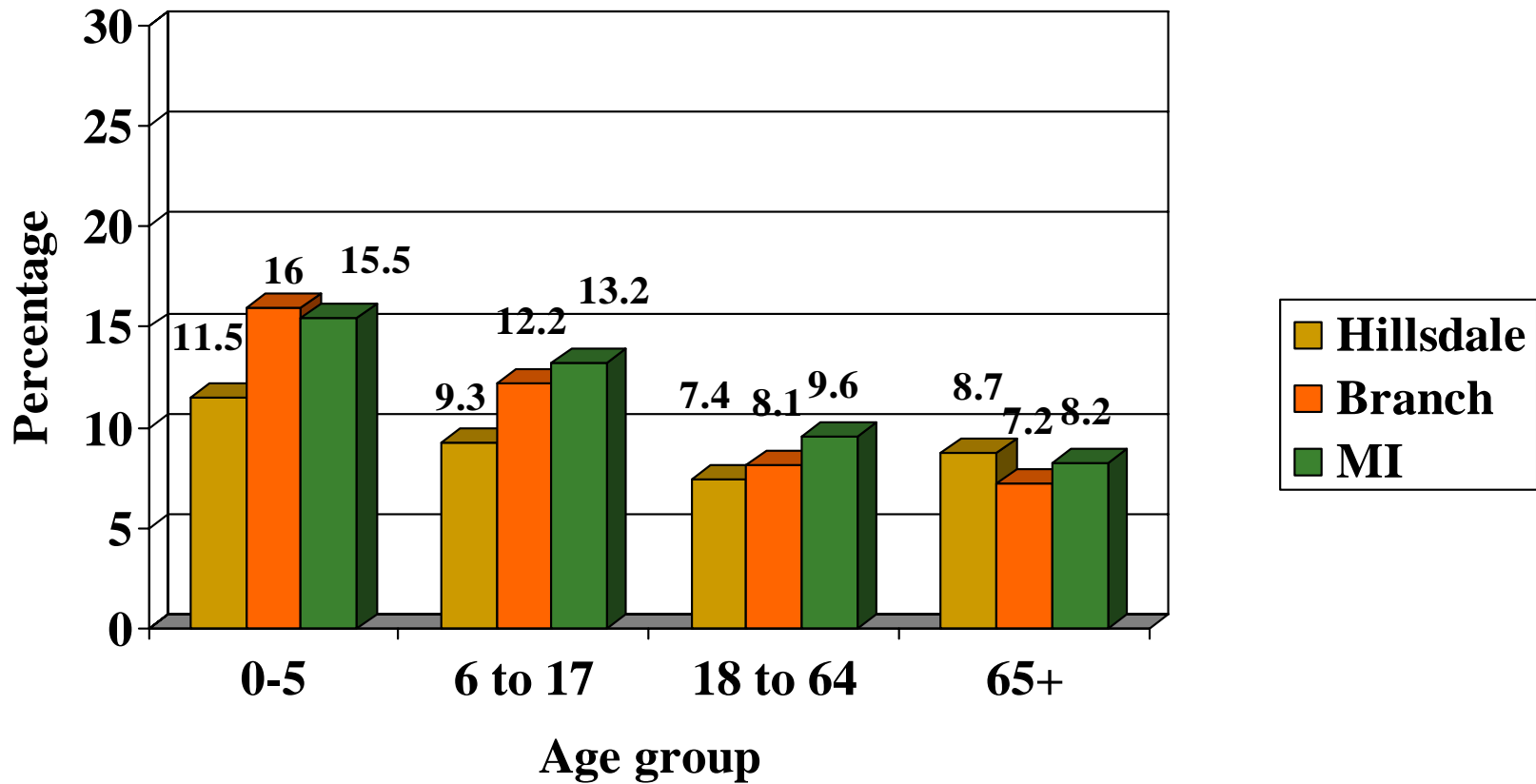
Percentage of Hillsdale seniors, age 65+, in poverty

Source: 1990,2000 U.S. Census

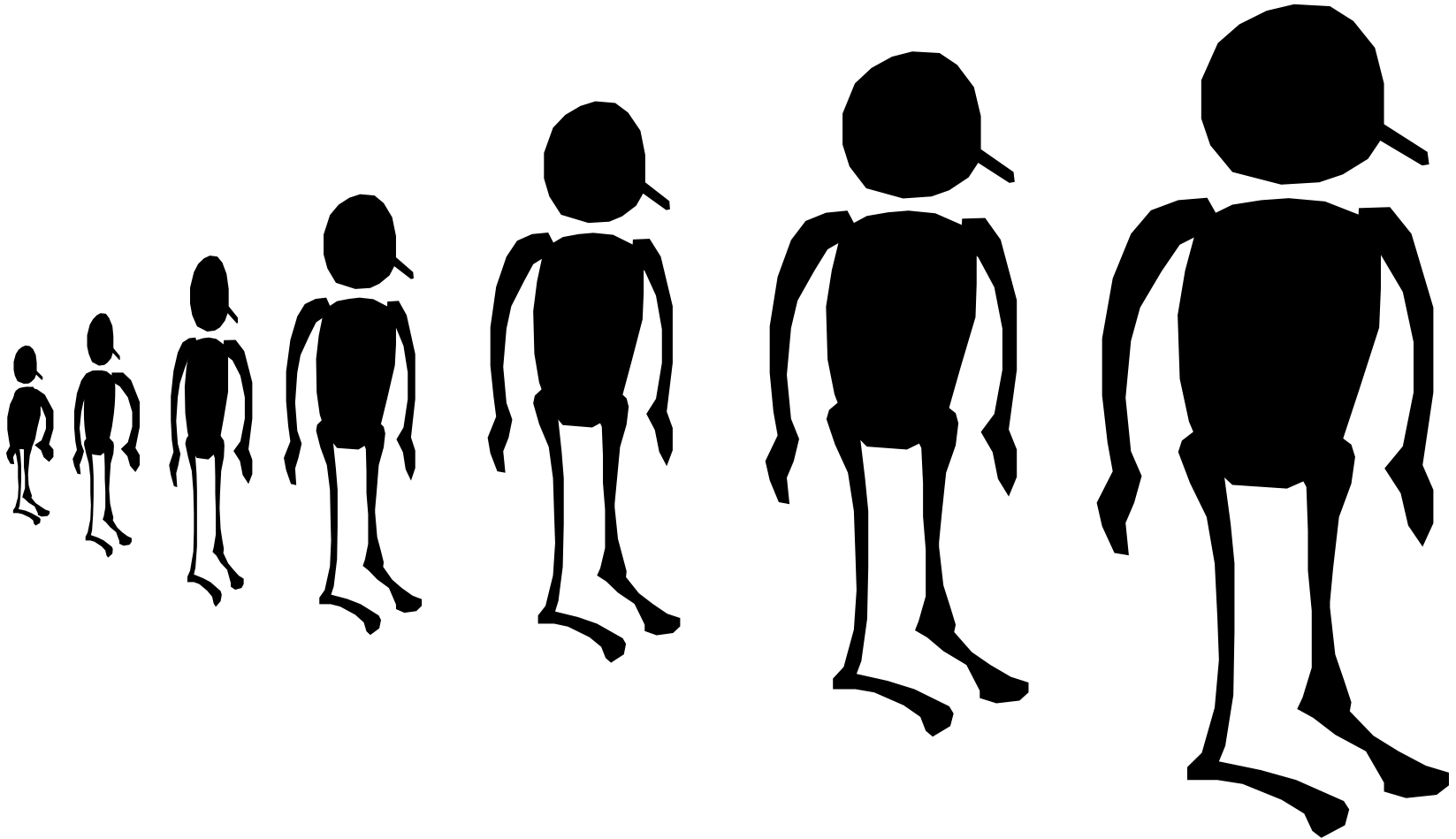


Percent of in poverty by age group in Hillsdale County, 2000

Source: 2000 U.S. Census



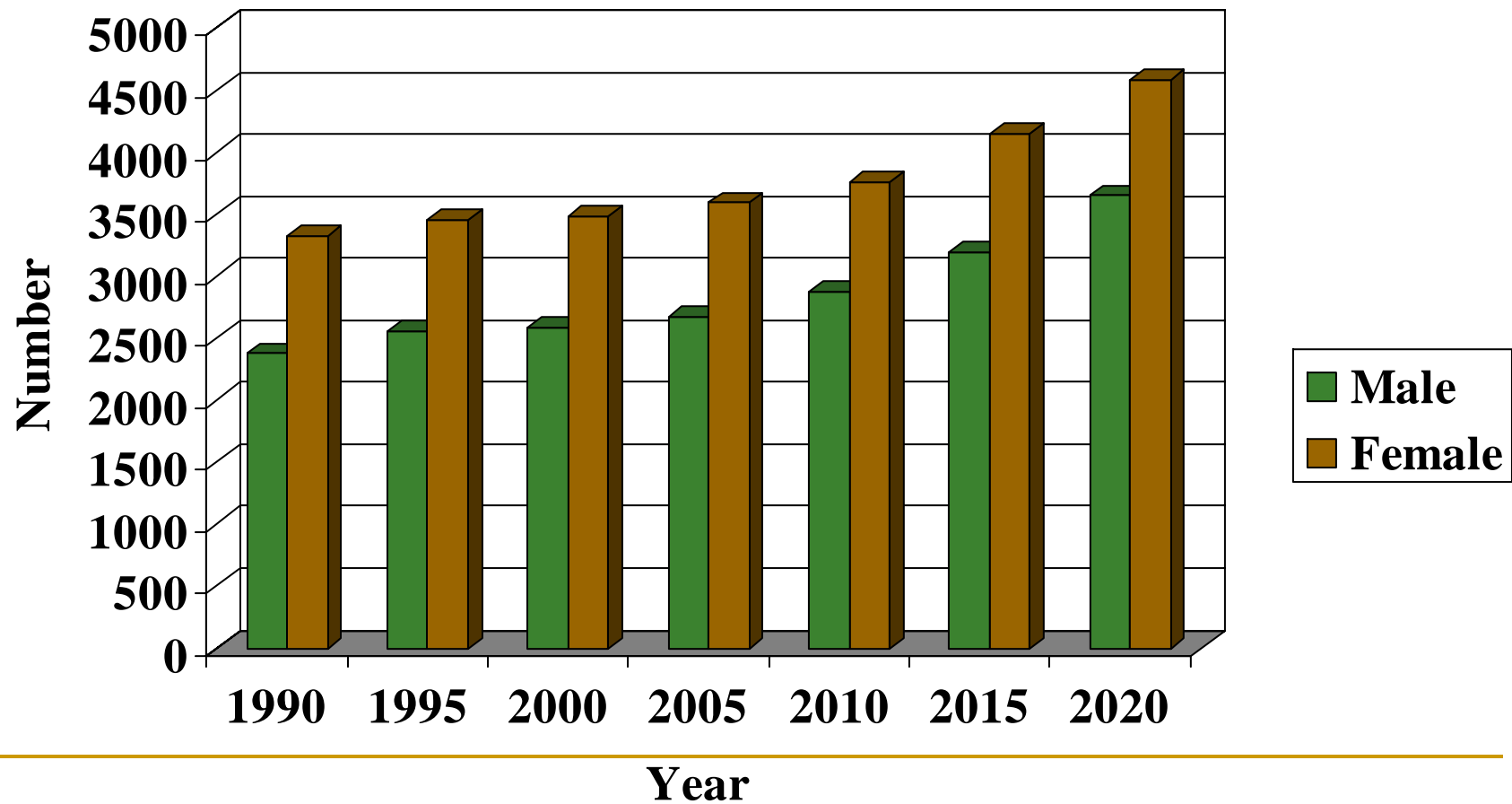
Growing and growing and growing and ...
A population explosion?



Age 65+ population estimates, Hillsdale County

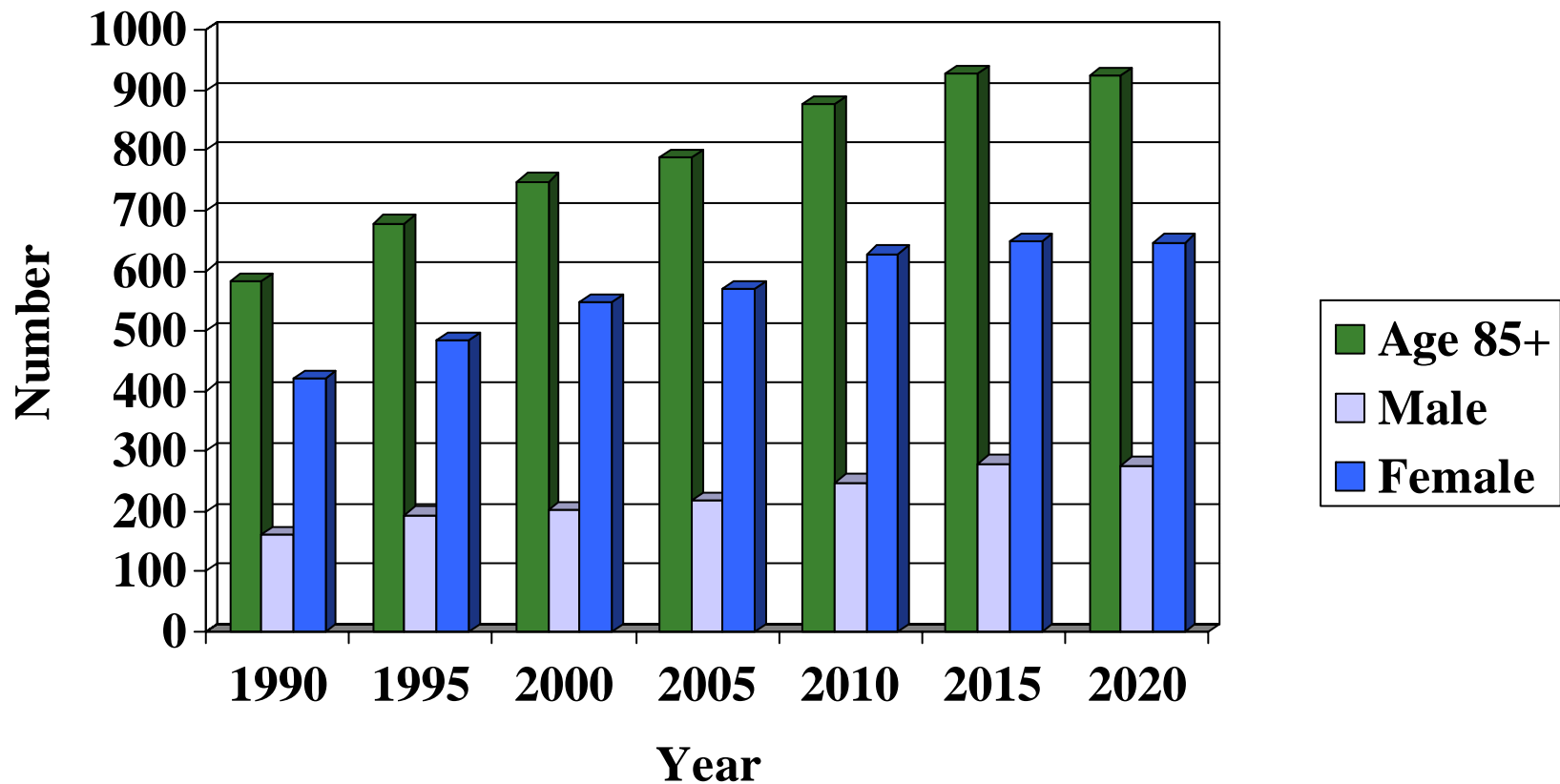
1990-2020, by sex, total

Source: Michigan Information Center



Age 85+ population estimates, Hillsdale County 1990-2020

Source: Michigan Information Center



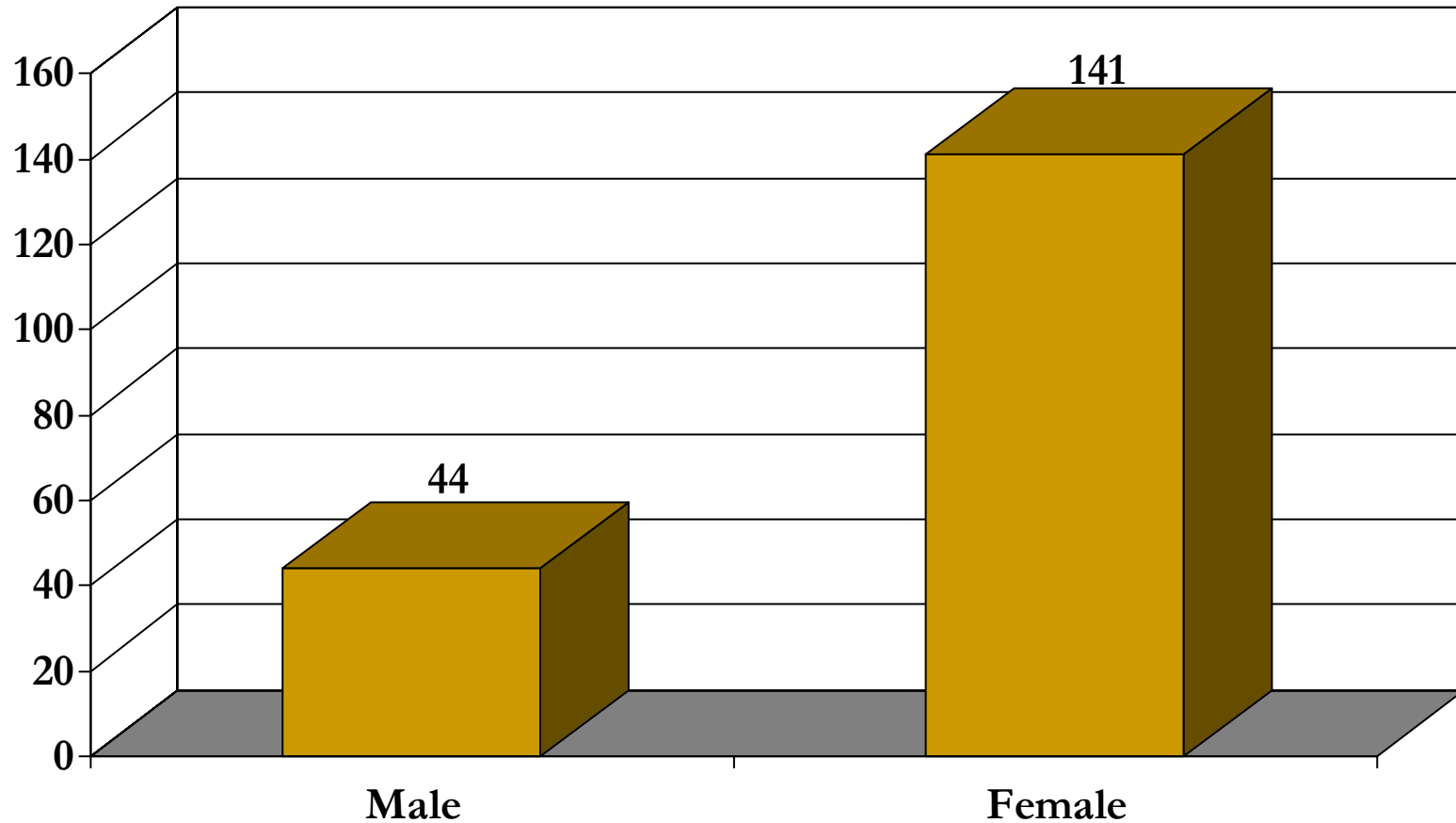
Hillsdale County Senior Survey Results

Source: FY 04/05 Sr. Center Survey



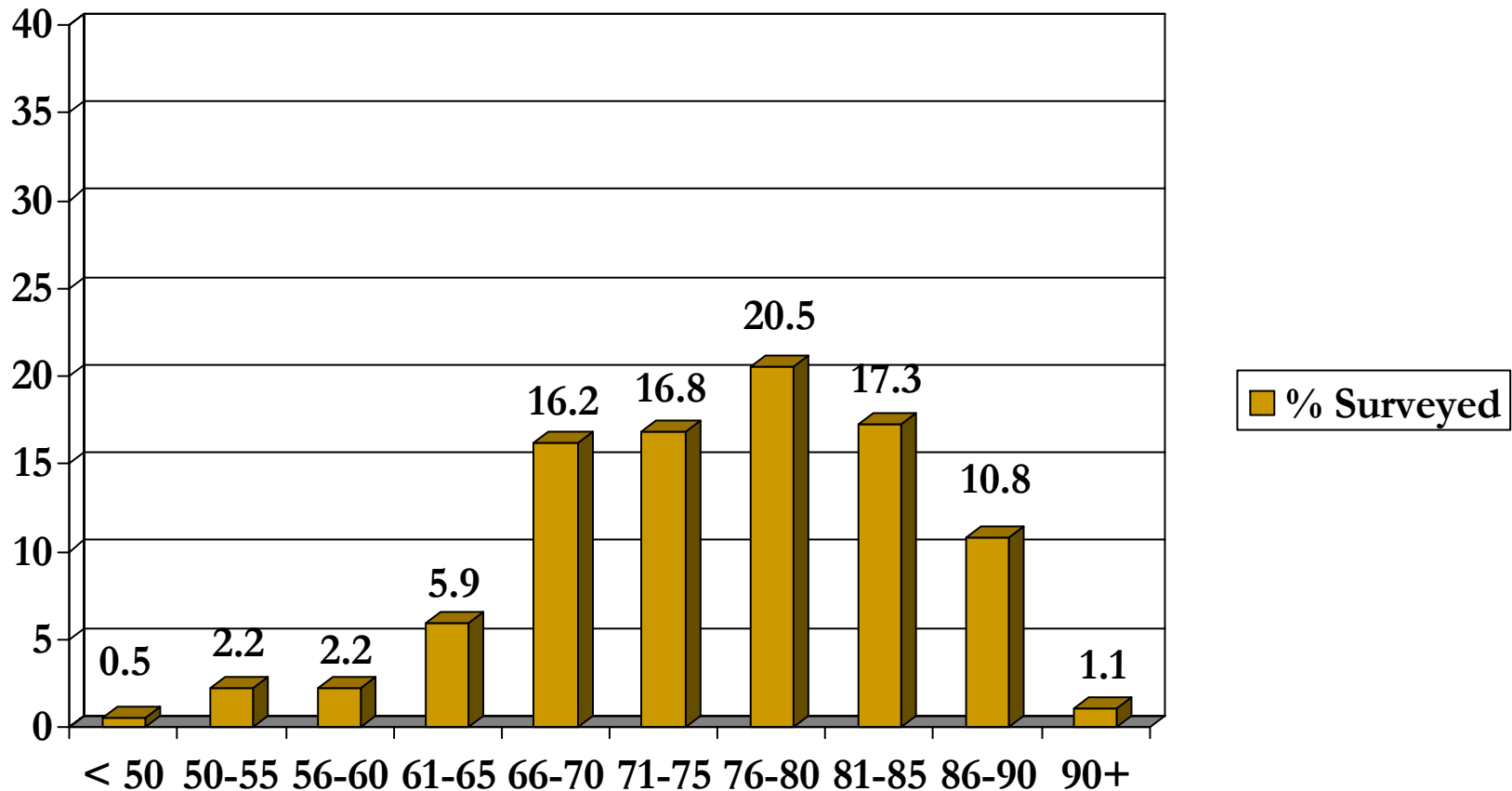
Total Surveyed – 185

Source: 2004/5 Hillsdale County Sr. Center Survey



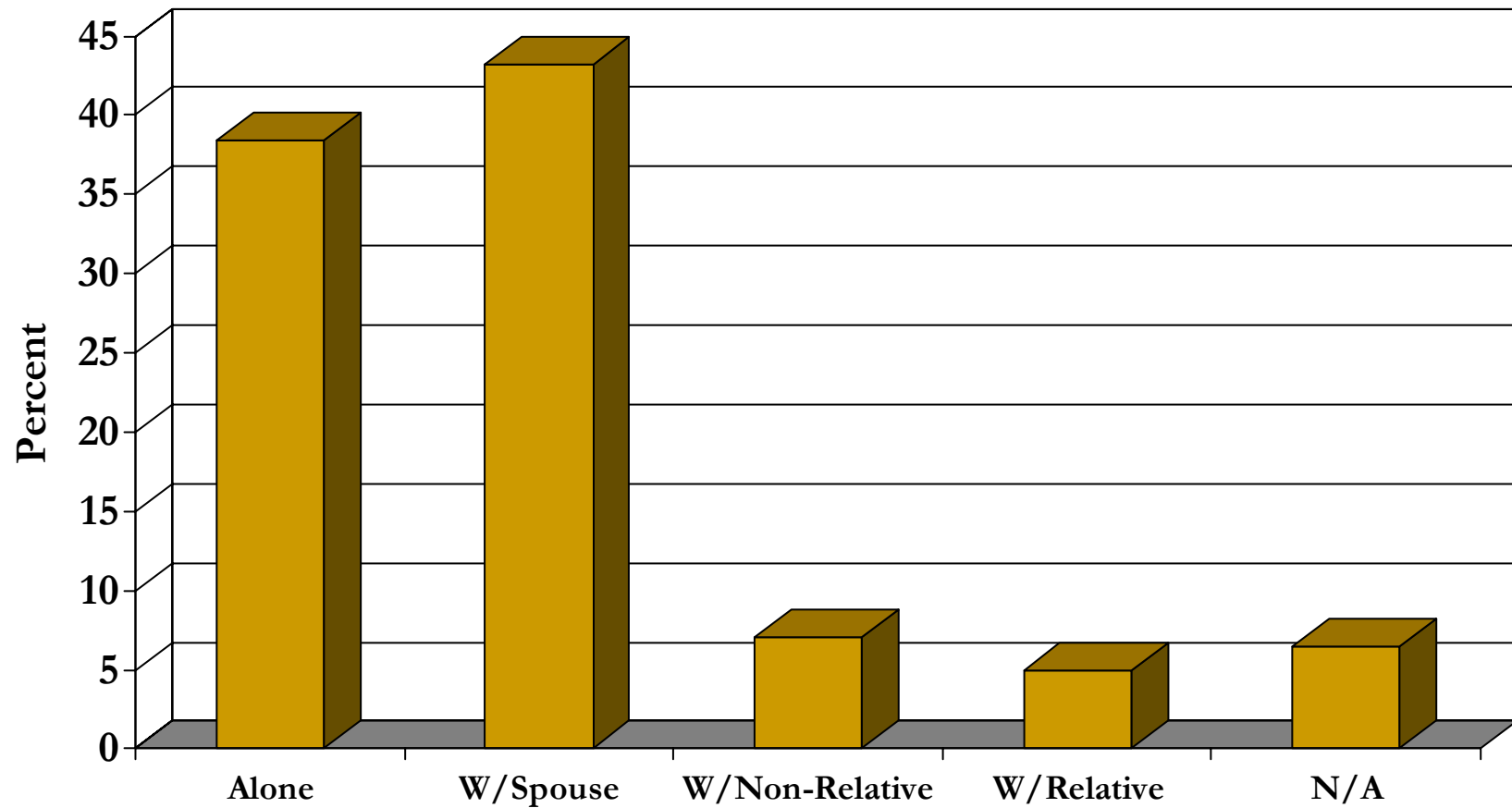
Age Distribution of Clients Surveyed

Source: 2004/5 Hillsdale County Sr. Center Survey



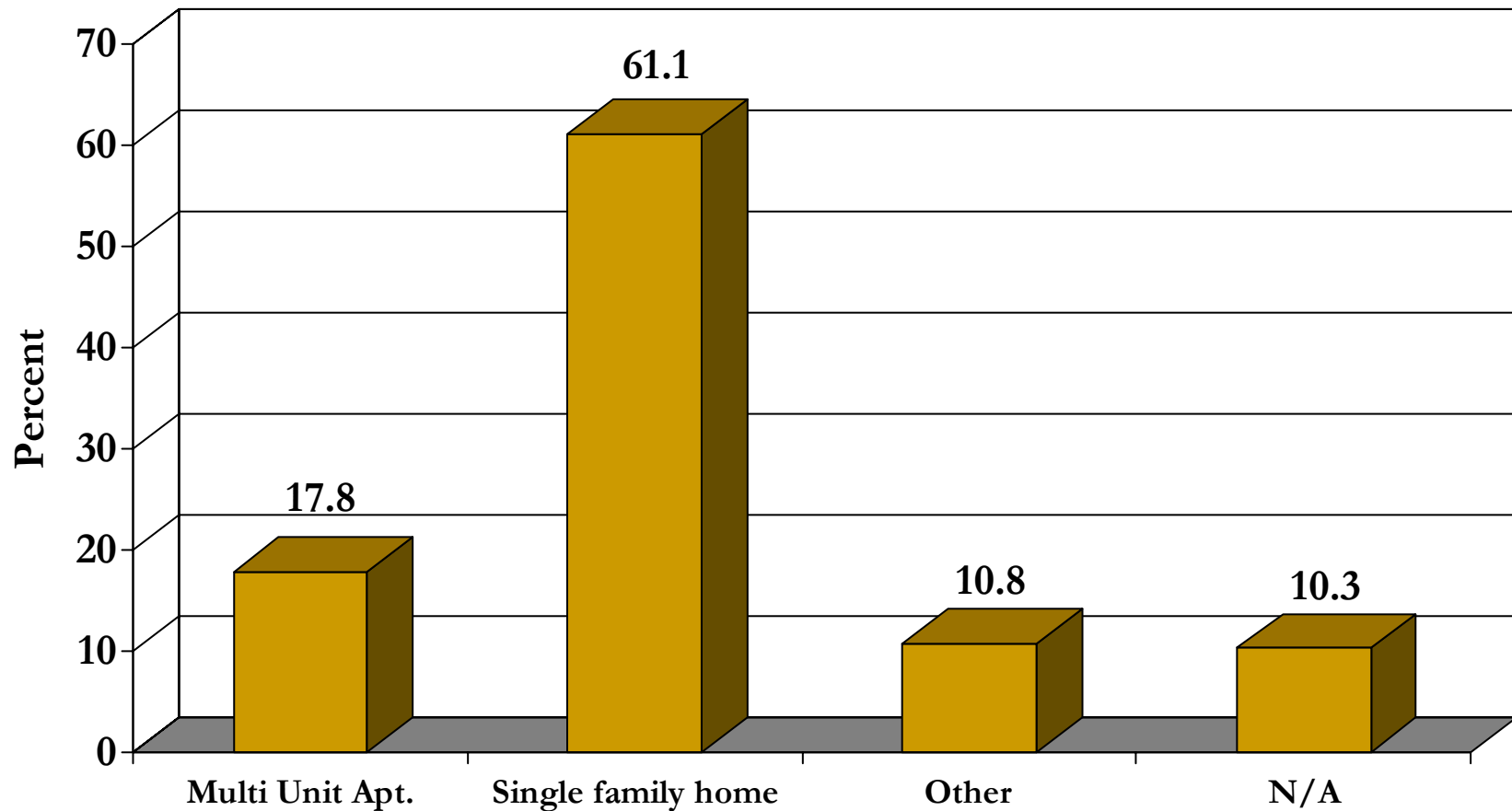
Living Status

Source: 2004/5 Hillsdale County Sr. Center Survey



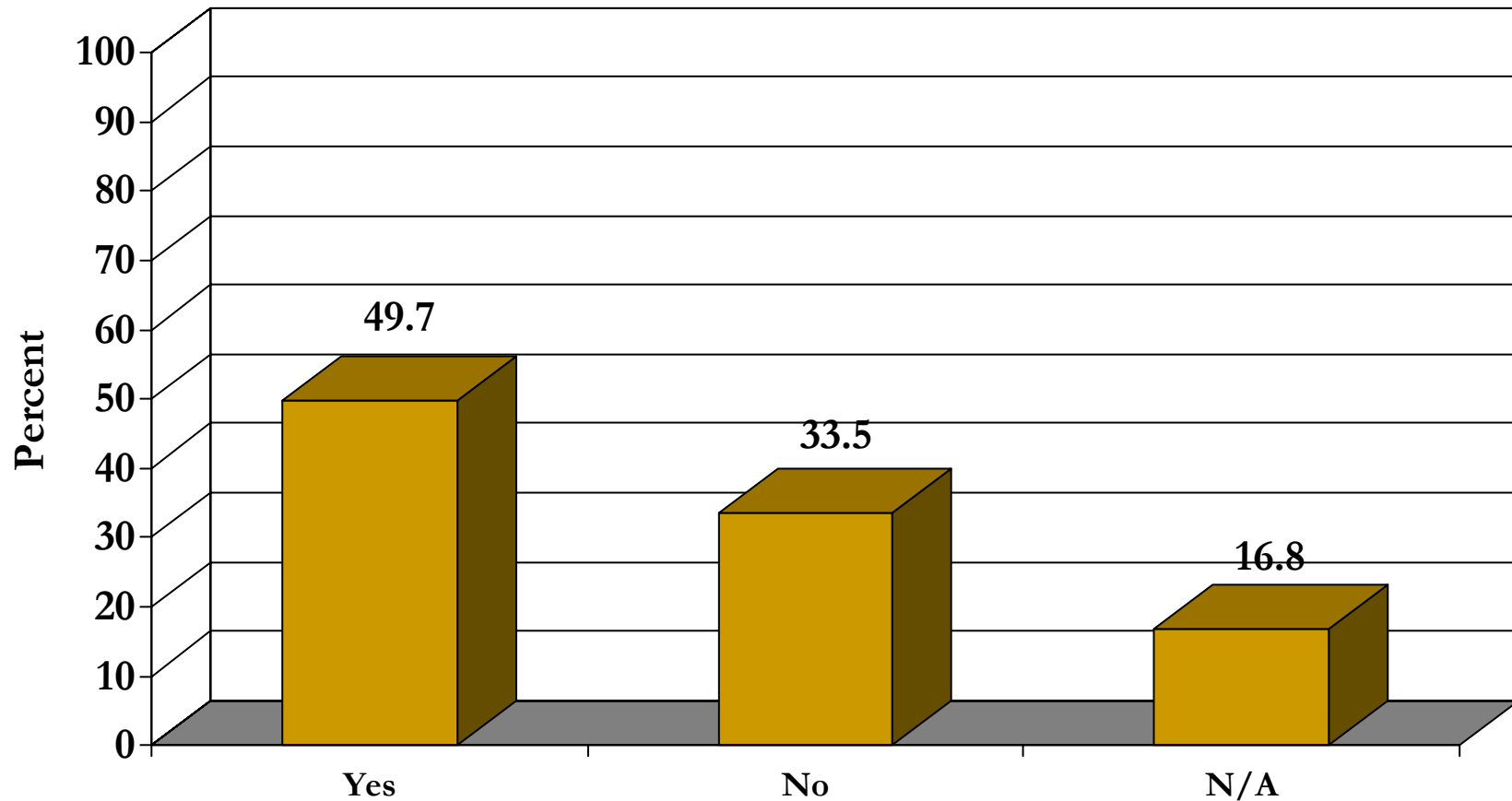
Housing Type

Source: 2004/5 Hillsdale County Sr. Center Survey



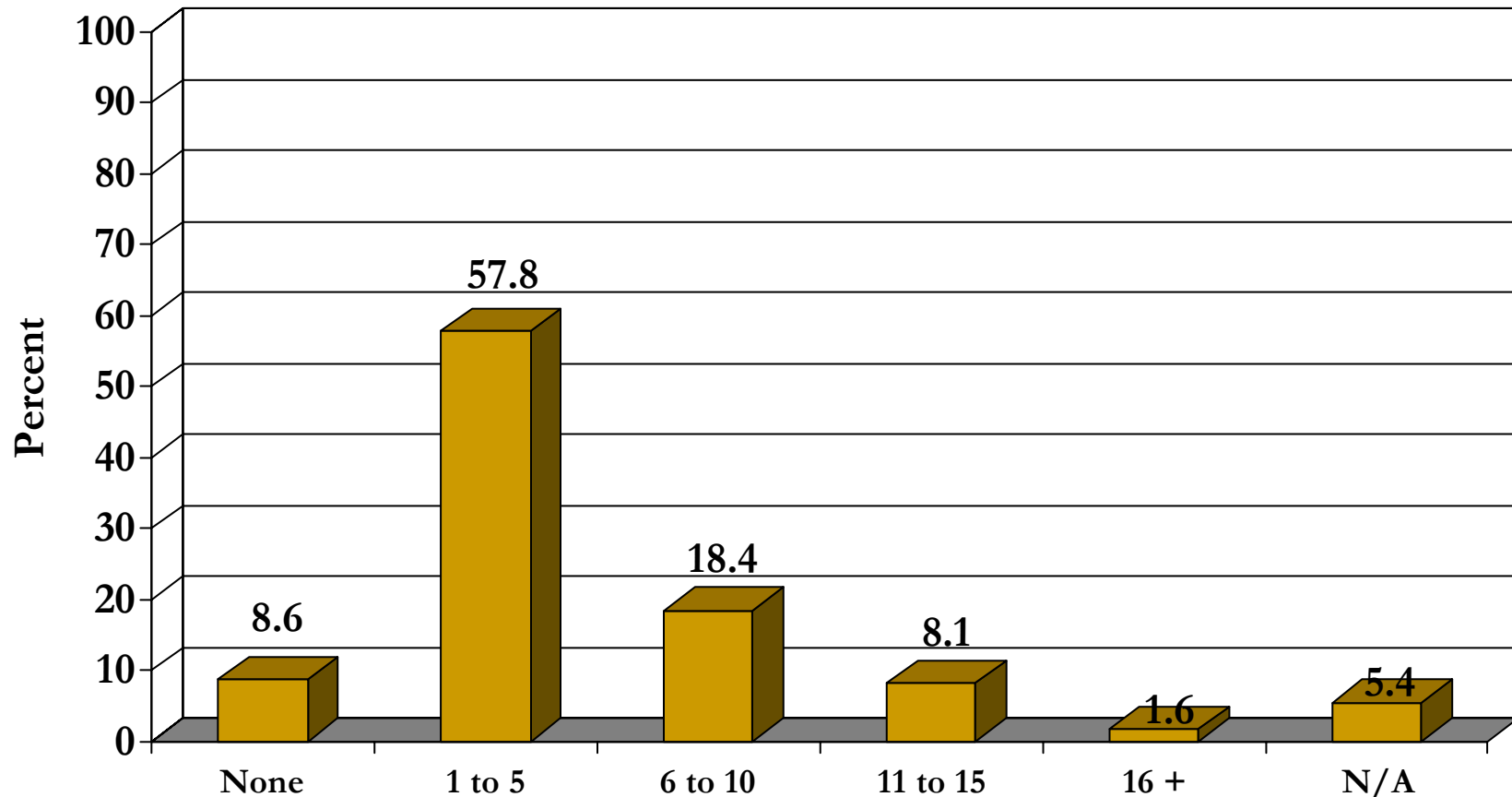
Does Insurance Cover All or Part of Your Prescriptions?

Source: 2004/5 Hillsdale County Sr. Center Survey



How Many Prescriptions Do You Currently Take?

Source: 2004/5 Hillsdale County Sr. Center Survey



Conclusions - Seniors

- 11% drop from 2001 to 2005 in Sr.'s reporting having had a flu shot – Sr. Center Survey
 - 20% drop in pneumonia shots from 2001-2005 in Sr.'s responding to the Sr. Center survey
 - Sr. Population (65+) is projected to increase 31% in the next 15 years to more than 8,200
-

Conclusions – Seniors - Continued

- Diabetes rates for HD seniors is 15% higher than the rate for Michigan seniors statewide
- Chronic obstructive pulmonary disease, or COPD, rates for Hillsdale County exceed the rate for Michigan by 44%. COPD refers to a group of diseases that cause airflow blockage and breathing-related problems. It includes emphysema, chronic bronchitis, and in some cases asthma and is a leading cause of death, illness, and disability in the United States. In the US, tobacco use is a key factor in the development and progression of COPD, but asthma, exposure to air pollutants in the home and workplace, genetic factors, and respiratory infections also play a role. With asthma rates for Hillsdale only 1/3 the State rate... well, you can see where this is going...



Finished with Step 1 – a look at the facts

Facts can be...

... **Useful** - There are 293 ways to make change for a dollar

... **Interesting** - No word in the English language rhymes with month, orange, silver or purple

... **Or world changing** - The microwave was invented after a researcher walked by a radar tube and a chocolate bar melted in his pocket.

Your first step is deciding how to use them...

Where can I get my own copy of this data?

Power Point Presentations are available on the world wide web at:

<http://www.bhsj.org/healthdata/healthdata-hd.htm>

Hard copies can be obtained through a request of the HSN Coordinator
