
HSN Report

Seniors

August, 2003

Statistical Question ???

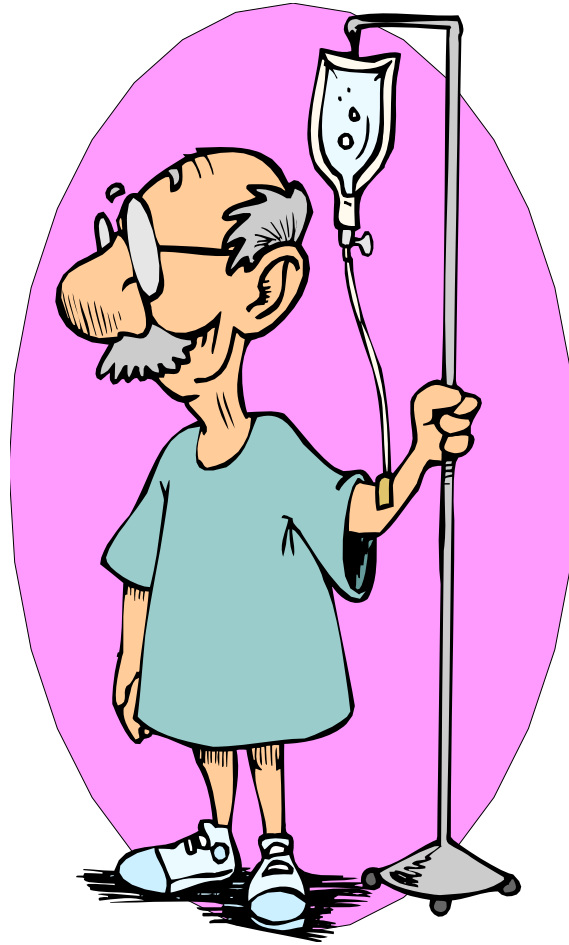
- Your retirement fund went up 60% last year and went down 40% this year. Your up 20% right??
-

Answer: Wrong!

- Year 1 - $\$100 \times 1.6 = \160
 - Year 2 -40% of 160 = (64)
 - Result = $160 - 64 = \$96$
-

What is making us sick?

(Other than that retirement account)

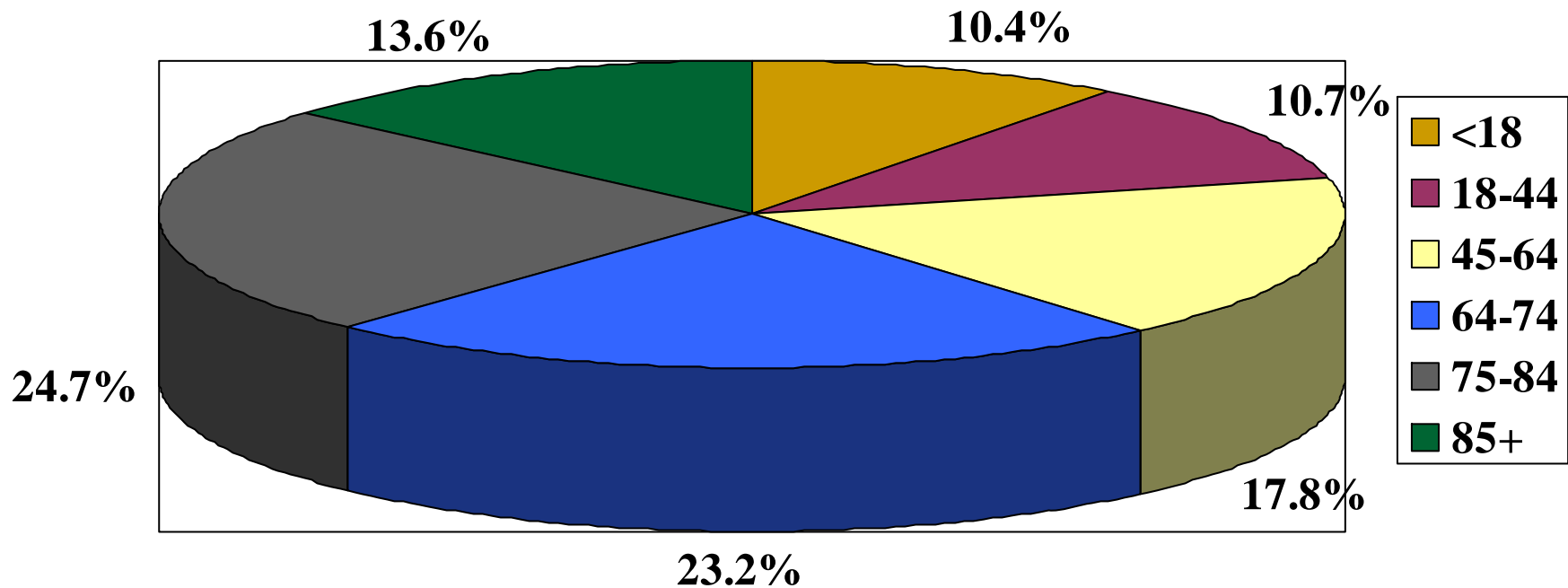


Number and rate/10,000 of
leading preventable hospitalizations, Hillsdale
residents age 65+, 2000

| Cause | Number | HD Rate | MI Rate |
|---------------------|---------------|--------------------|--------------------|
| Cong. Heart Failure | 180 | 290.7 | 244.4 |
| Bacterial Pneumonia | 112 | 184.6 | 169.3 |
| COPD | 110 | 152.6 | 115.2 |
| Kidney/Urinary | 37 | 65.9 | 60.9 |
| Angina | 23 | 45.1 | 23.3 |
| Cellulitis | 19 | 30.8 | 30.6 |
| Diabetes | 9 | 23.1 | 24.4 |

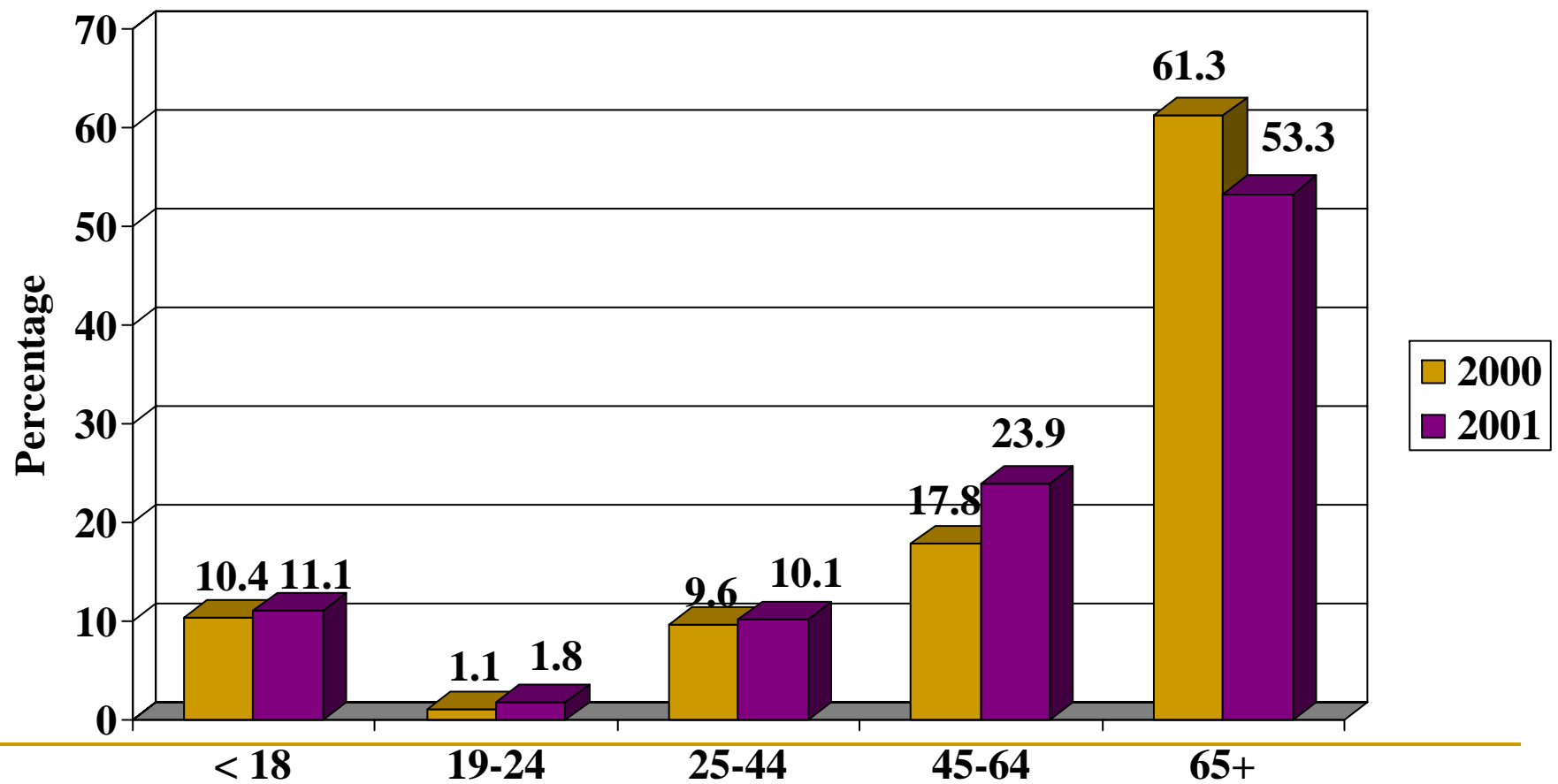
Percentage of preventable hospitalizations by age group, Hillsdale, 2000

Source: Michigan Resident Inpatient Files



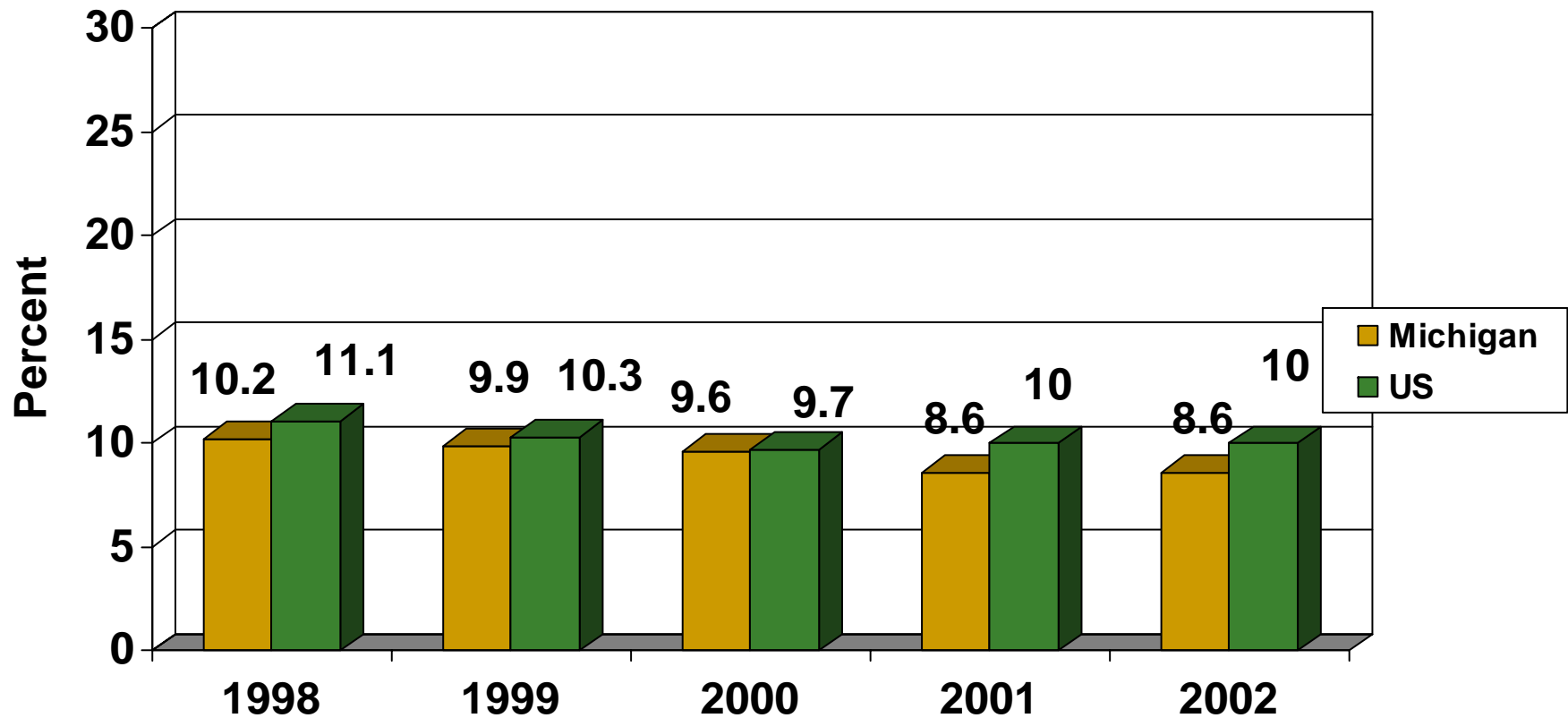
Percentage of preventable hospitalizations by age group, Hillsdale 2000 vs. 2001

Source: MDCH Hospitalization files



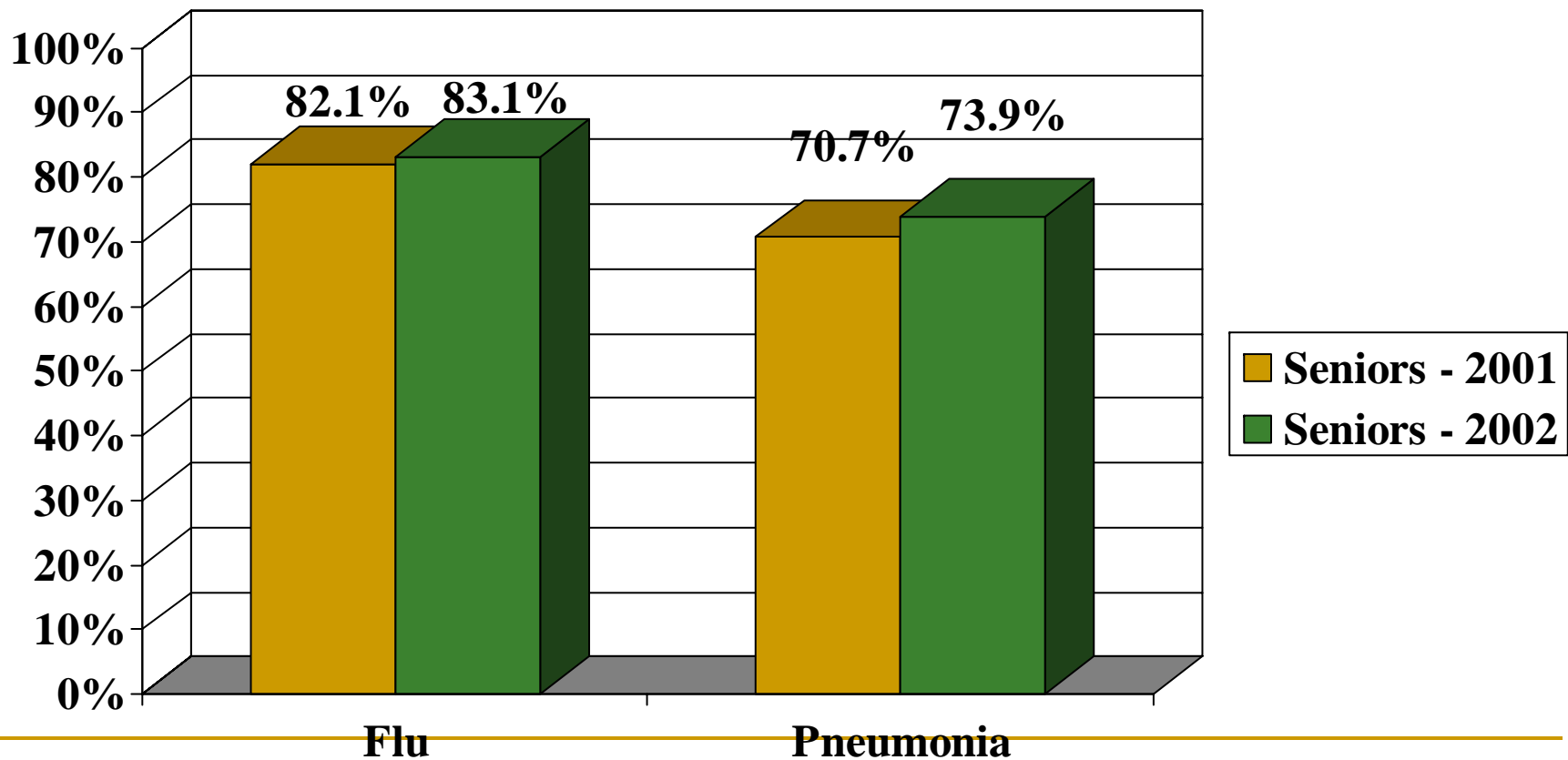
Current smokers – Seniors 65+ Michigan vs. US

Source: Behavioral Risk Factor Surveillance System 2002



Percentage of Hillsdale seniors who ever received a flu or pneumonia shot,

2001 Senior Needs Survey vs. 2002 Senior Needs Survey



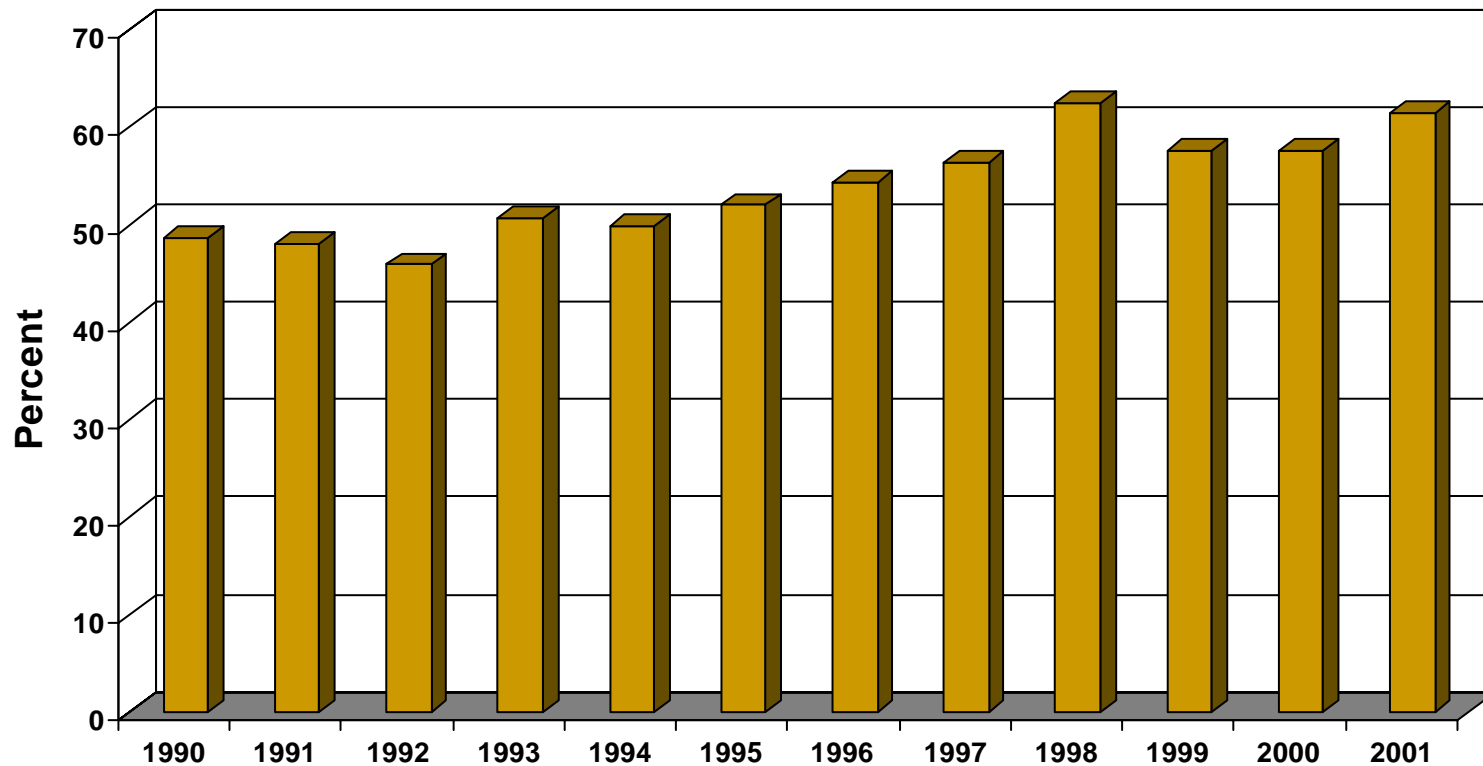
Educational opportunities for Hillsdale County seniors

- Adult Education
- JCC
- Elder Hostel
- Lifelong learning at
Hillsdale County Senior
Services Center
(HCSSC)



Percentage of Hillsdale residents age 65 or older who died and a high school diploma was noted on the death certificate, 1990-2001

Source: MDCH Death File



Number of reports of suspected abuse/neglect and crimes against the elderly in Hillsdale County

Source: Hillsdale FIA Annual Report

| | <u>Year</u> | |
|-----------------------------------|--------------|--------------|
| | 99/00 | 00/01 |
| Number of cases investigated | 71 | 79 |
| Number of referrals substantiated | 29 | 25 |

In-home services for the elderly in Hillsdale County

Source: Hillsdale County Senior Center

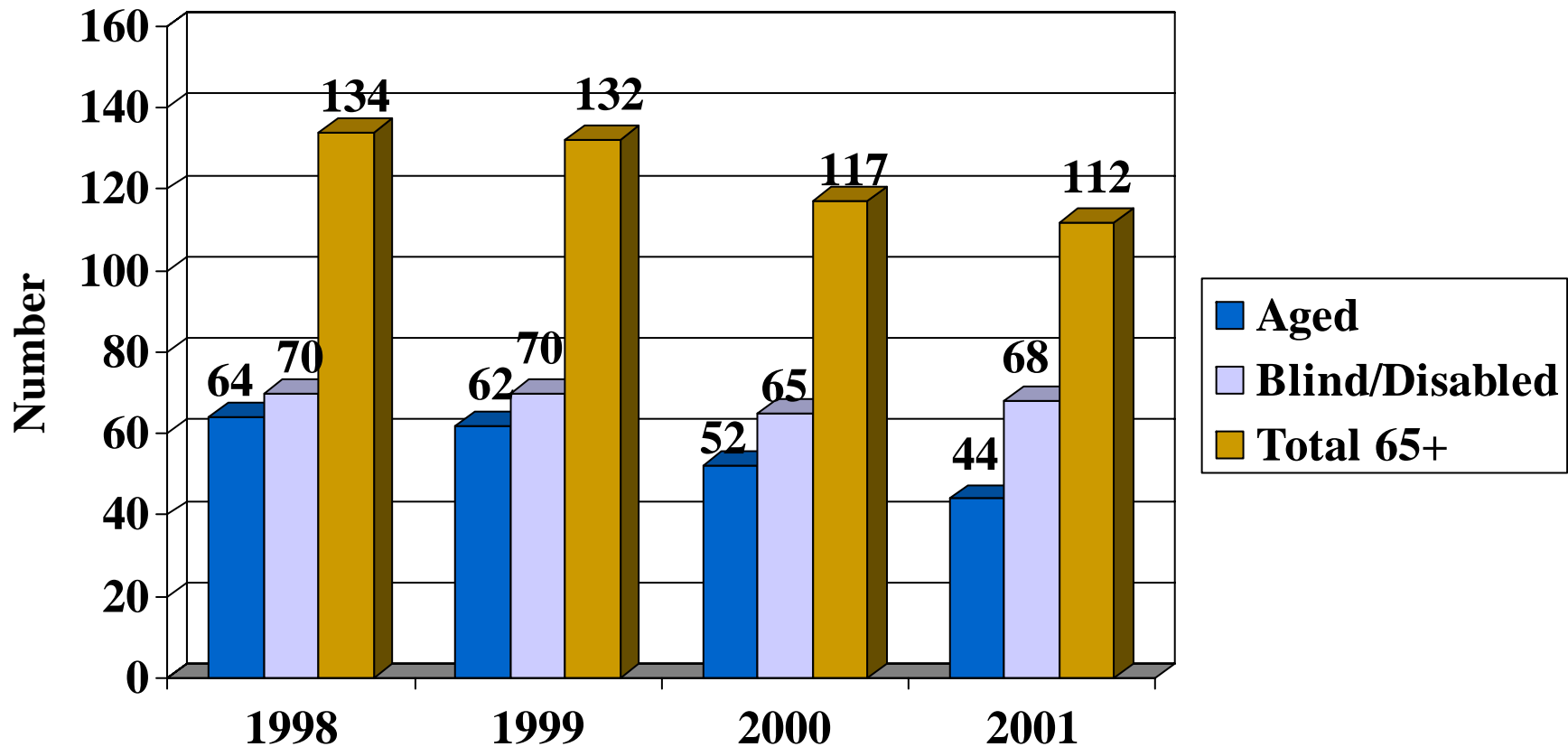
For the period October
2001 through
September 2002
Hillsdale Sr. Center
provided 403
unduplicated in-home
services to seniors in
Hillsdale County



Hillsdale seniors receiving SSI by type of payment-

Total sr. population is approx. 6,200, 112 is 1.8% of that population

Source: US Social Security Administration



Percentage of Hillsdale seniors receiving QMBY and SLMBY

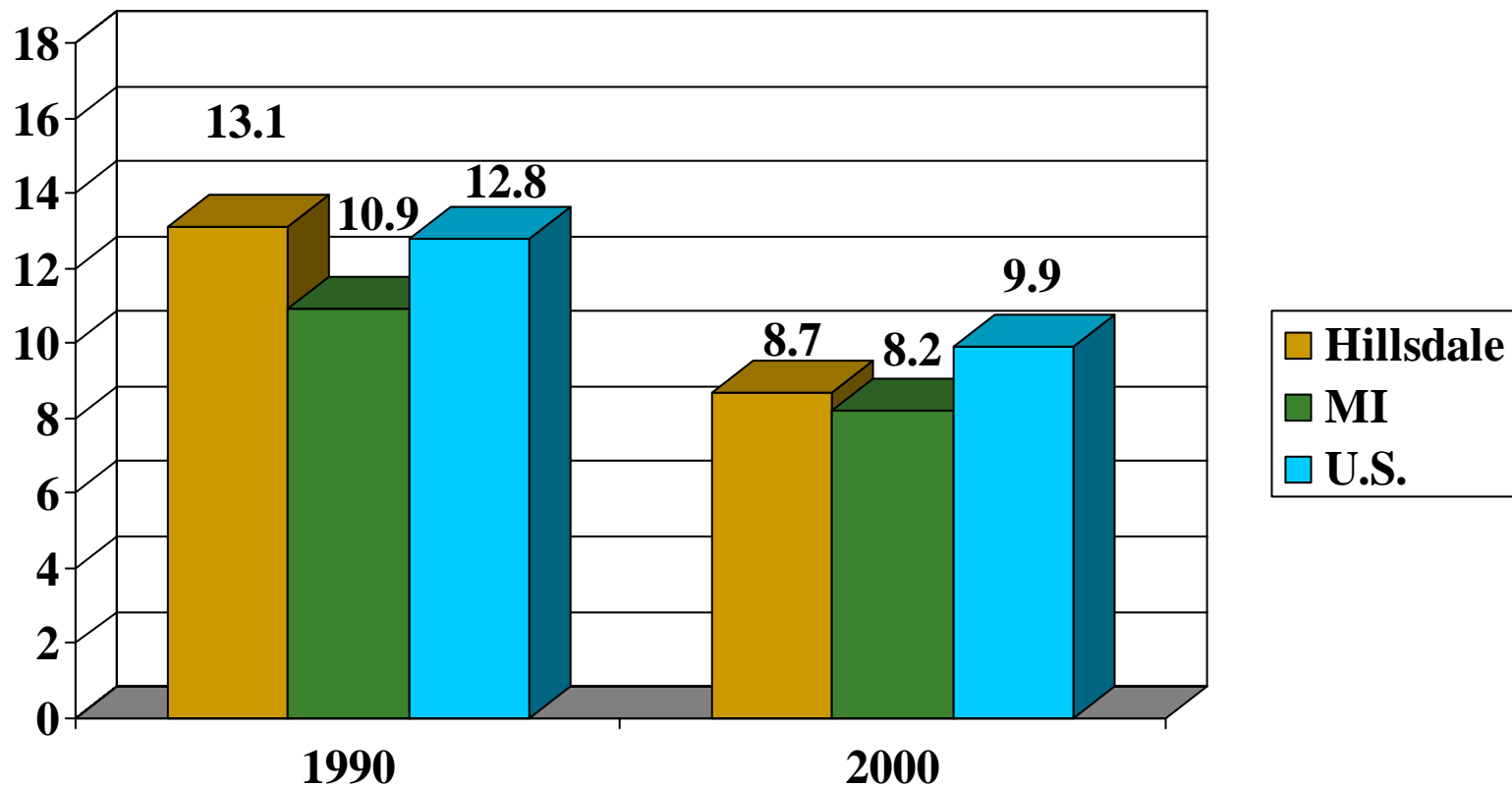
(Medicaid assistance for Medicare premiums)

Source: FIA

As of April 2003 there were 386 seniors in Hillsdale who are receiving Medicaid assistance for their Medicare premiums. This represents approximately 6% of seniors living in Hillsdale County.

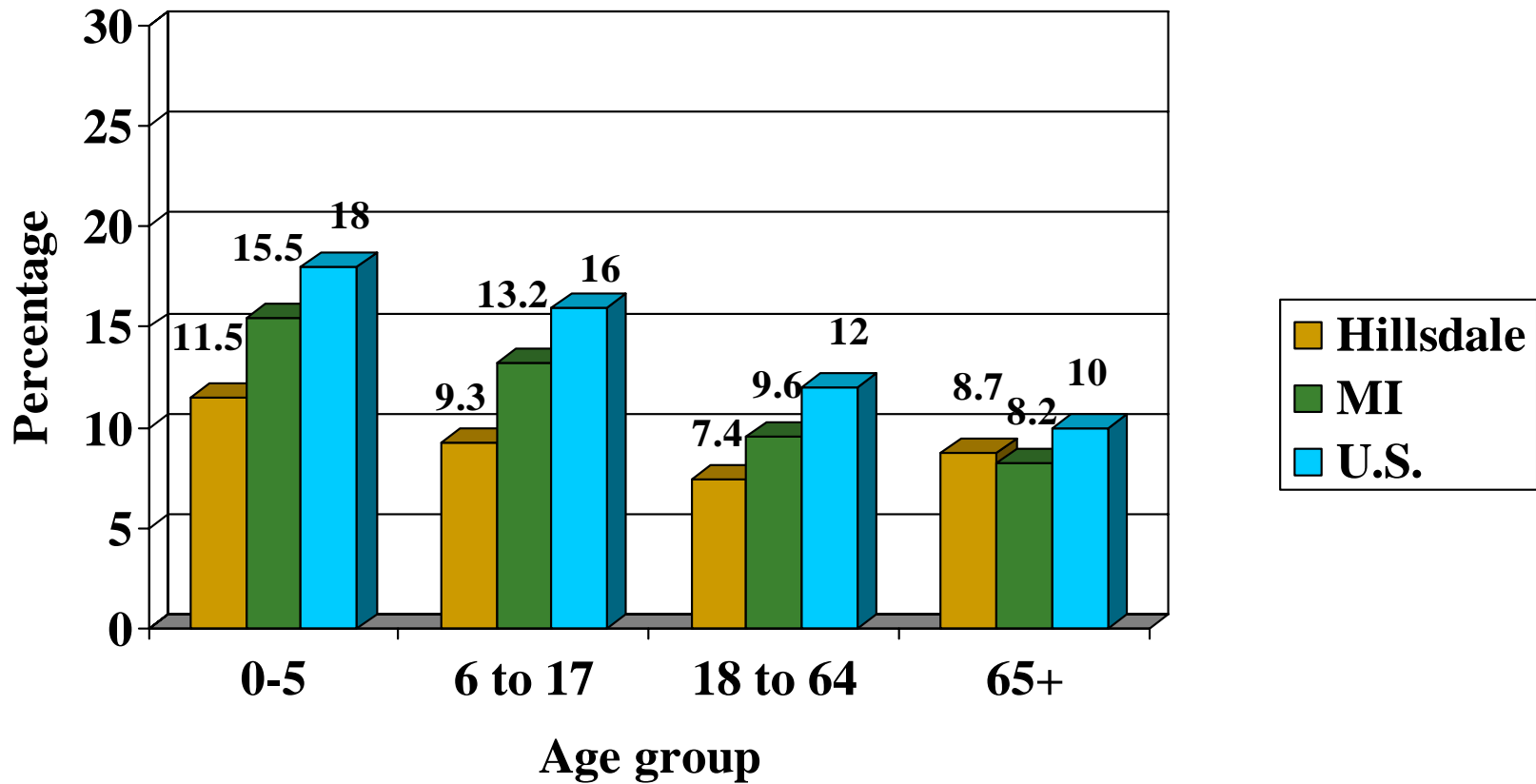
Percentage of Hillsdale seniors, age 65+, in poverty

Source: 1990,2000 U.S. Census

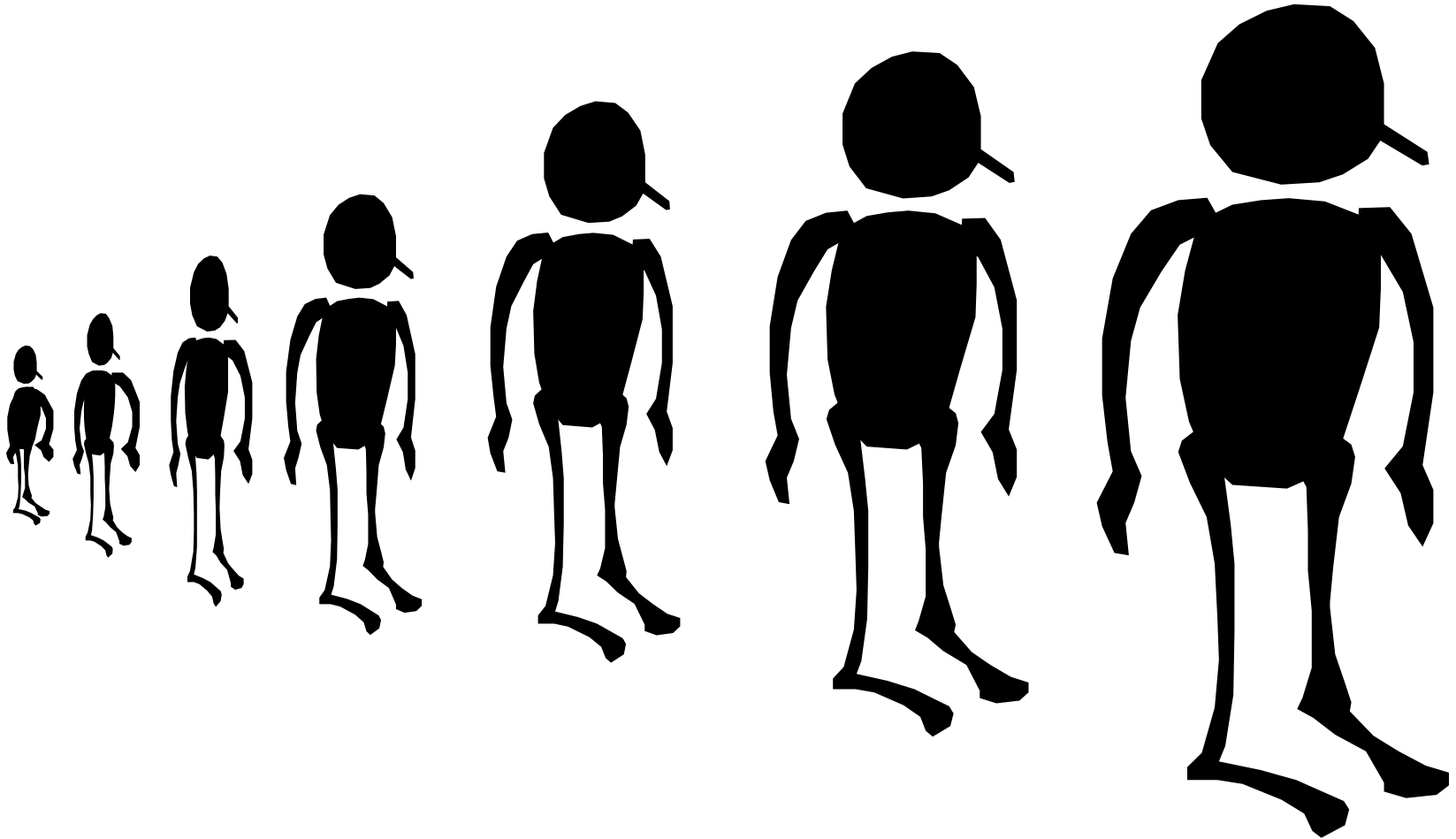


Percent of in poverty by age group in Hillsdale County, 2000

Source: 2000 U.S. Census



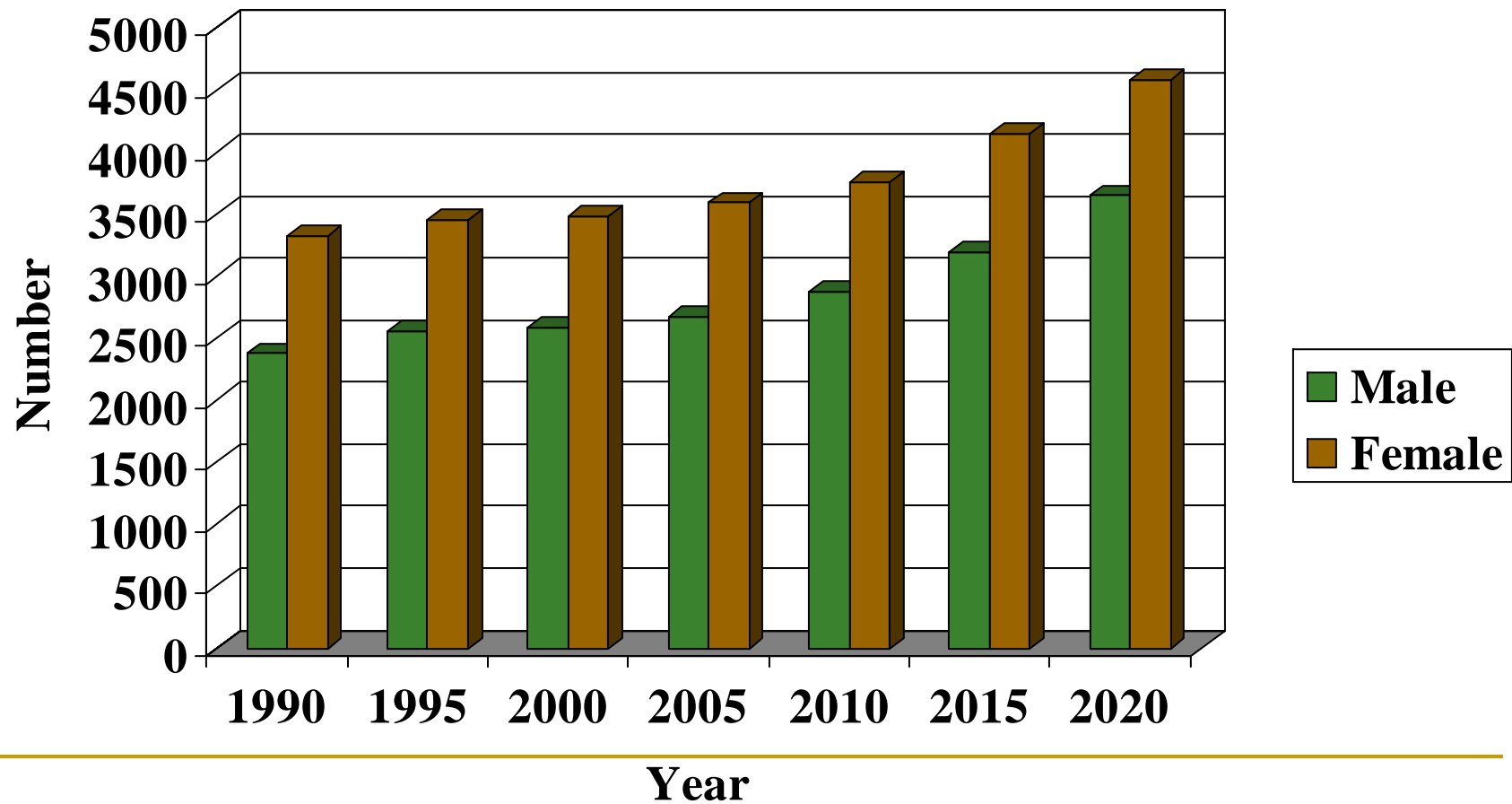
Growing and growing and growing and ...
A population explosion?



Age 65+ population estimates, Hillsdale County

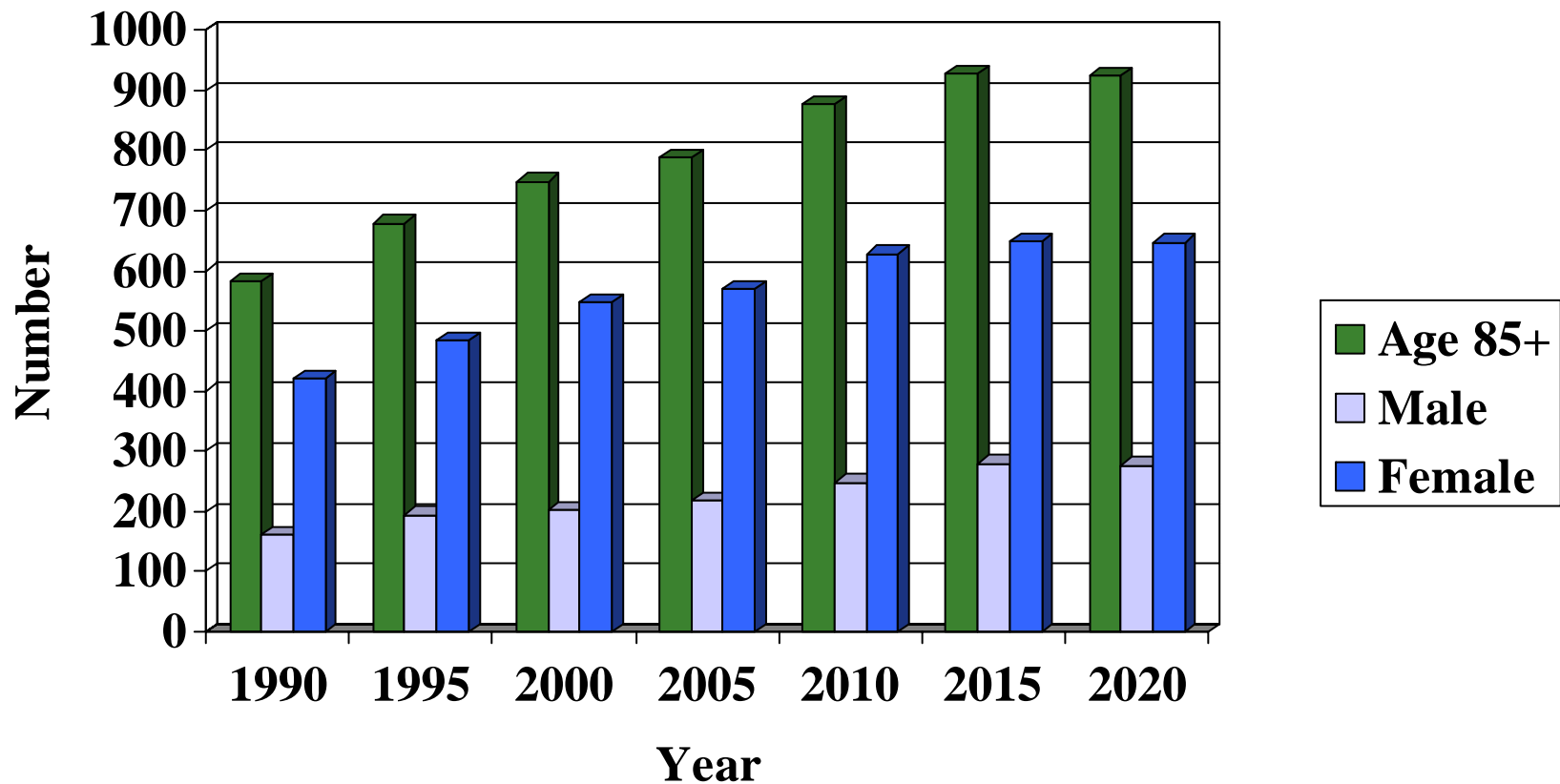
1990-2020, by sex, total

Source: Michigan Information Center



Age 85+ population estimates, Hillsdale County 1990-2020

Source: Michigan Information Center



Finished?

(Step 1 – a look at the data)

- Knowledge is a process of piling up facts; wisdom lies in their simplification.

MARTIN FISCHER
