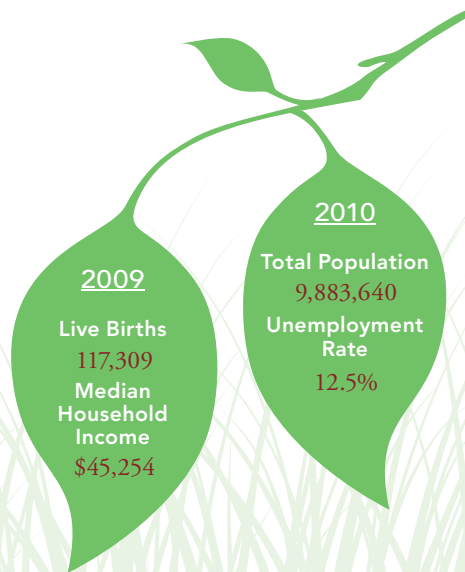


TRENDS IN CHILD WELL-BEING 2000–2008/09**



	BASE YEAR		CURRENT YEAR		RANK ¹	MI RATE	PERCENT CHANGE IN RATE	
	NUMBER	RATE	NUMBER	RATE			WORSE	BETTER
Economic Security**	<u>2005</u>		<u>2009</u>					
Children in poverty								
• ages 0–17	454,296	18.3%	513,550	22.2%	—	22.2%	21	
• ages 5–17	308,636	16.9%	341,851	20.2%	—	20.2%	20	
	<u>2006</u>		<u>2010</u>					
Students receiving free/reduced price school lunches ²	612,022	36.2%	730,991	46.5%	—	46.5%	28	
Child Health	<u>1998–2000</u>		<u>2007–2009</u>					
Less than adequate prenatal care (2008–09)‡	—	—	35,191	29.5%	—	29.5%		
Low-birthweight babies	10,626	7.9%	10,245	8.5%	—	8.5%	7	
Infant mortality (per 1,000)	1,091	8.1	924	7.6	—	7.6	6	
Child deaths, ages 1–14 (per 100,000)	471	23.1	318	17.4	—	17.4	25	
Adolescence								
Births to teens, ages 15–19 (per 1,000)	14,633	41.9	12,076	33.3	—	33.3	21	
Teen deaths (per 100,000)	456	63.9	412	55.6	—	55.6	13	
	<u>2007</u>		<u>2010</u>					
High school dropouts**	21,185	15.1%	15,277	11.1%	—	11.1%	27	
Abuse/Neglect (per 1,000)	<u>FY2000</u>		<u>FY2010</u>					
Children in investigated families	171,106	65.9	164,648	70.1	—	70.1	6	
Confirmed victims	26,844	10.3	32,504	13.8	—	13.8	34	
Children in out-of-home care	17,253	6.6	12,004	5.1	—	5.1	23	
Education (not proficient in math)	<u>2003</u>		<u>2010</u>					
Fourth grade (MEAP)	43,446	35.0%	9,601	8.5%	—	8.5%	76	
Eighth grade (MEAP)	61,223	48.1%	25,432	22.0%	—	22.0%	54	
	<u>2008</u>		<u>2010</u>					
High school students (MME)	60,963	53.8%	54,043	49.6%	—	49.6%	8	



¹ A ranking of 1 means a county has the “best” rate compared to other counties in the state. Unless noted, the ranking is based on 82–83 counties.
² Family income for eligible students is below 185 percent poverty level.
 * Sometimes a rate could not be calculated because of low incidence of events or unavailable data.
 ** Due to changes in the data measures, comparisons between 2000 and the current year could not be made for some indicators.
 ‡ Due to Michigan’s revised birth certificate, 2008–09 data cannot be compared with those of previous years.
 MME – Michigan Merit Exam instead of the MEAP.
 Beginning in 2007 Michigan high school students have taken the ACT college entrance exam.

Missing bars indicate no change or a rate could not be calculated; a “0” reflects no change. Percentage change is calculated with unrounded rates.