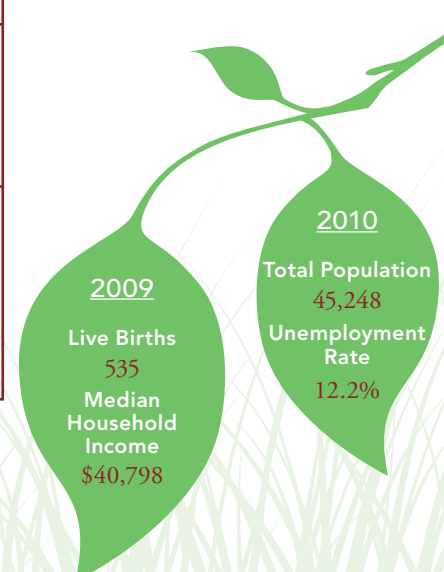


TRENDS IN CHILD WELL-BEING 2000–2008/09\*\*



|   | BASE YEAR        |       | CURRENT YEAR     |       | RANK <sup>1</sup> | MI RATE | PERCENT CHANGE IN RATE |        |
|---|------------------|-------|------------------|-------|-------------------|---------|------------------------|--------|
|   | NUMBER           | RATE  | NUMBER           | RATE  |                   |         | WORSE                  | BETTER |
| <b>Economic Security**</b>  | <u>2005</u>      |       | <u>2009</u>      |       |                   |         |                        |        |
| Children in poverty   |                  |       |                  |       |                   |         |                        |        |
| • ages 0–17   | 2,010            | 18.6% | 2,780            | 26.8% | 62                | 22.2%   | 44                     |        |
| • ages 5–17   | 1,251            | 16.0% | 1,829            | 24.7% | 64                | 20.2%   | 54                     |        |
|   | <u>2006</u>      |       | <u>2010</u>      |       |                   |         |                        |        |
| Students receiving free/reduced price school lunches <sup>2</sup> | 3,058            | 43.9% | 3,153            | 52.6% | 48                | 46.5%   | 20                     |        |
| <b>Child Health</b>   | <u>1998–2000</u> |       | <u>2007–2009</u> |       |                   |         |                        |        |
| Less than adequate prenatal care (2008–09)‡                       | —                | —     | 242              | 44.2% | 81                | 29.5%   |                        |        |
| Low-birthweight babies  | 36               | 6.3%  | 38               | 6.7%  | 24 of 81          | 8.5%    | 7                      |        |
| Infant mortality (per 1,000)                                      | 4                | 6.4   | 2                | 3.5   | 3 of 49           | 7.6     |                        | 45     |
| Child deaths, ages 1–14 (per 100,000)                             | 2                | *     | 1                | *     | * of 34           | 17.4    |                        |        |
| <b>Adolescence</b>  |                  |       |                  |       |                   |         |                        |        |
| Births to teens, ages 15–19 (per 1,000)                           | 84               | 54.7  | 69               | 48.4  | 72                | 33.3    |                        | 11     |
| Teen deaths (per 100,000)   | 4                | 111.7 | 1                | *     | * of 39           | 55.6    |                        |        |
|   | <u>2007</u>      |       | <u>2010</u>      |       |                   |         |                        |        |
| High school dropouts**  | 76               | 14.4% | 43               | 8.3%  | 37 of 80          | 11.1%   |                        | 43     |
| <b>Abuse/Neglect (per 1,000)</b>                                  | <u>FY2000</u>    |       | <u>FY2010</u>    |       |                   |         |                        |        |
| Children in investigated families                                 | 954              | 81.6  | 1,327            | 125.1 | 77                | 70.1    | 53                     |        |
| Confirmed victims   | 178              | 15.2  | 456              | 43.0  | 79                | 13.8    | 183                    |        |
| Children in out-of-home care                                      | 70               | 6.0   | 76               | 7.2   | 64 of 76          | 5.1     | 20                     |        |
| <b>Education (not proficient in math)</b>                         | <u>2003</u>      |       | <u>2010</u>      |       |                   |         |                        |        |
| Fourth grade (MEAP)   | 191              | 43.0% | 41               | 8.9%  | 58                | 8.5%    |                        | 79     |
| Eighth grade (MEAP)   | 251              | 54.0% | 80               | 20.6% | 45                | 22.0%   |                        | 62     |
|   | <u>2008</u>      |       | <u>2010</u>      |       |                   |         |                        |        |
| High school students (MME)  | 280              | 61.3% | 250              | 57.9% | 73                | 49.6%   |                        | 6      |

● Branch  
● Michigan



<sup>1</sup> A ranking of 1 means a county has the “best” rate compared to other counties in the state. Unless noted, the ranking is based on 82–83 counties.

<sup>2</sup> Family income for eligible students is below 185 percent poverty level.

\* Sometimes a rate could not be calculated because of low incidence of events or unavailable data.

\*\* Due to changes in the data measures, comparisons between 2000 and the current year could not be made for some indicators.

‡ Due to Michigan’s revised birth certificate, 2008–09 data cannot be compared with those of previous years.

MME – Michigan Merit Exam instead of the MEAP.

Beginning in 2007 Michigan high school students have taken the ACT college entrance exam.

Missing bars indicate no change or a rate could not be calculated; a “0” reflects no change.

Percentage change is calculated with unrounded rates.