



BRANCH COUNTY MOTOR VEHICLE ACCIDENTS TRENDS

Motor Vehicle Accidents

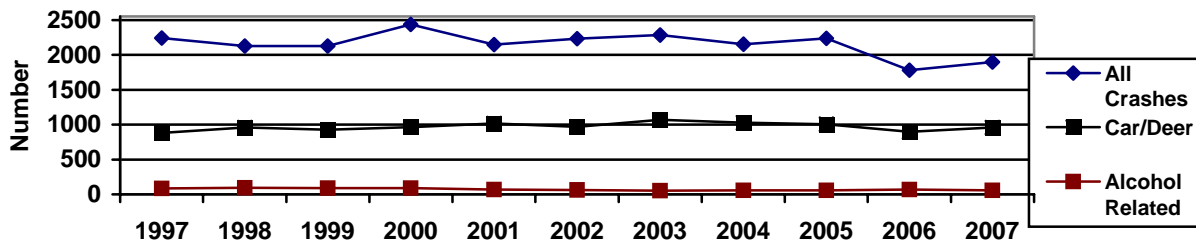
An average of 2,142 crashes occurred in Branch County each year during 1998 to 2007. Car/deer crashes averaged 978 a year and 2005 the number topped 1000 for the third straight year, but has fallen off in the last 2 year. Crashes involving alcohol averaged 69 per year during this period, representing 3.3% of all reported crashes. *Alcohol related crashes, in general, have declined more than 30% from 1998-99 to 2006-07 and injuries in those same crashes have declined by 12%.*

Number of Motor Vehicle, Car/Deer and Alcohol Related Crashes in Branch County and the Percentage of All County Crashes that Involved Alcohol, 1998-2007

| | 1998 | 1999 | 2000 | 2001 | 2002 | 2003 | 2004 | 2005 | 2006 | 2007 |
|-----------------------------|-------------|-------------|-------------|-------------|-------------|-------------|-------------|-------------|-------------|-------------|
| Total Branch Crashes | 2126 | 2127 | 2437 | 2146 | 2229 | 2284 | 2153 | 2238 | 1780 | 1898 |
| Crashes Involving Deer | 956 | 925 | 962 | 1018 | 969 | 1068 | 1,028 | 1004 | 894 | 957 |
| Alcohol Related Crashes | 92 | 88 | 87 | 67 | 64 | 51 | 59 | 58 | 69 | 57 |
| % Crashes Alcohol Related | 4.3% | 4.1% | 3.6% | 3.2% | 2.9% | 2.2% | 2.8% | 2.6% | 3.9% | 3% |

Source: Michigan State Police Accident Reports, 1998-2007

Motor Vehicle, Car/Deer and Alcohol Related Crashes, Branch 1997-07



Although alcohol or drugs were involved in less than 5% of all crashes, they represent a much larger percentage of all deaths and injuries that occurred as a result of motor vehicle crashes.

Number of Branch Crash Deaths & Injuries, the Number of Alcohol Related Deaths & Injuries, and the Percentage of Deaths & Injuries with Alcohol Involvement, 2000-2007

| | 2000 | 2001 | 2002 | 2003 | 2004 | 2005 | 2006 | 2007 |
|-------------------------------|------------|------------|------------|------------|------------|------------|------------|------------|
| Number of Crash Deaths | 4 | 7 | 9 | 4 | 9 | 10 | 12 | 8 |
| Alcohol Related Deaths | 2 | 1 | 4 | 1 | 4 | 1 | 4 | 1 |
| % Deaths Alcohol Related | 50% | 14% | 45% | 25% | 45% | 10% | 33% | 12.5% |
| Number of Injuries | 565 | 414 | 449 | 430 | 412 | 429 | 390 | 351 |
| Alcohol Related Injuries | 44 | 38 | 36 | 33 | 39 | 50 | 40 | 32 |
| % Alcohol Related Injuries | 7.8% | 9.2% | 8.1% | 7.7% | 9.5% | 11.7 | 10.3 | 9.2% |

Source: Michigan State Police Accident Reports, 2000-2007

Revision Date: 11/2008